
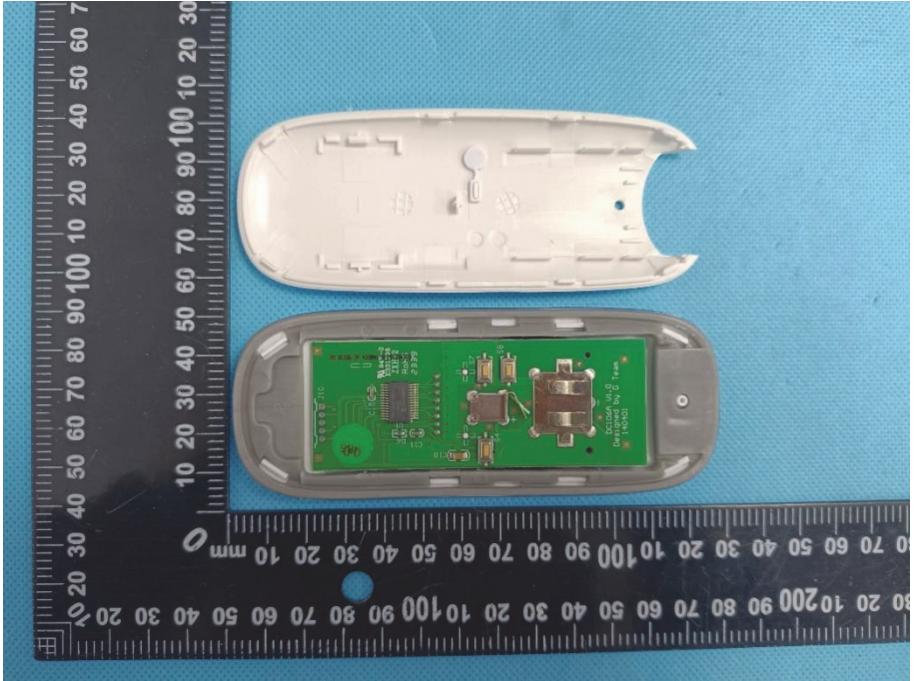
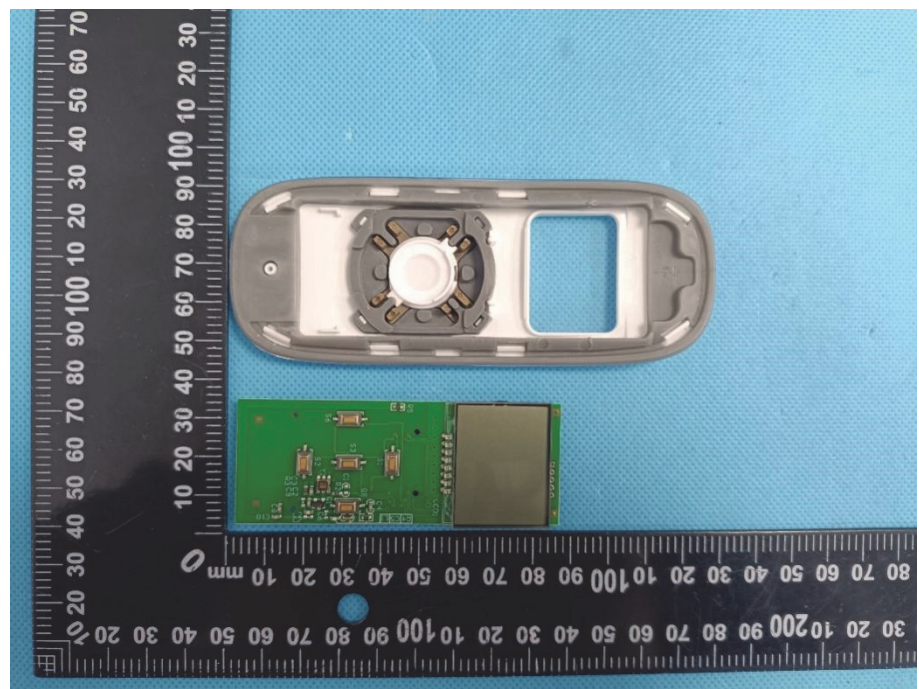


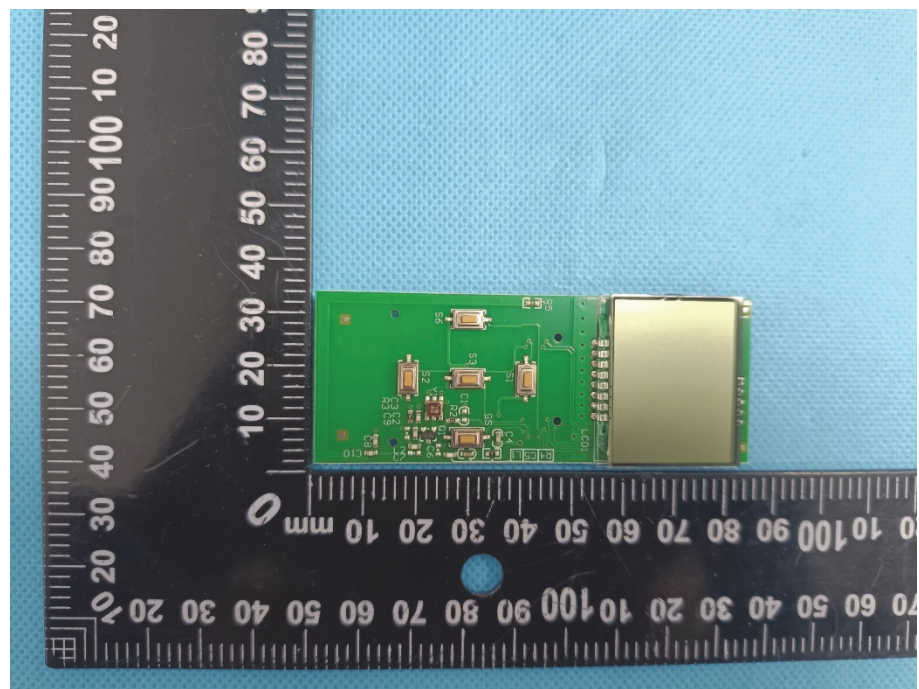
### EXHIBIT 3 - EUT INTERNAL PHOTOGRAPHS

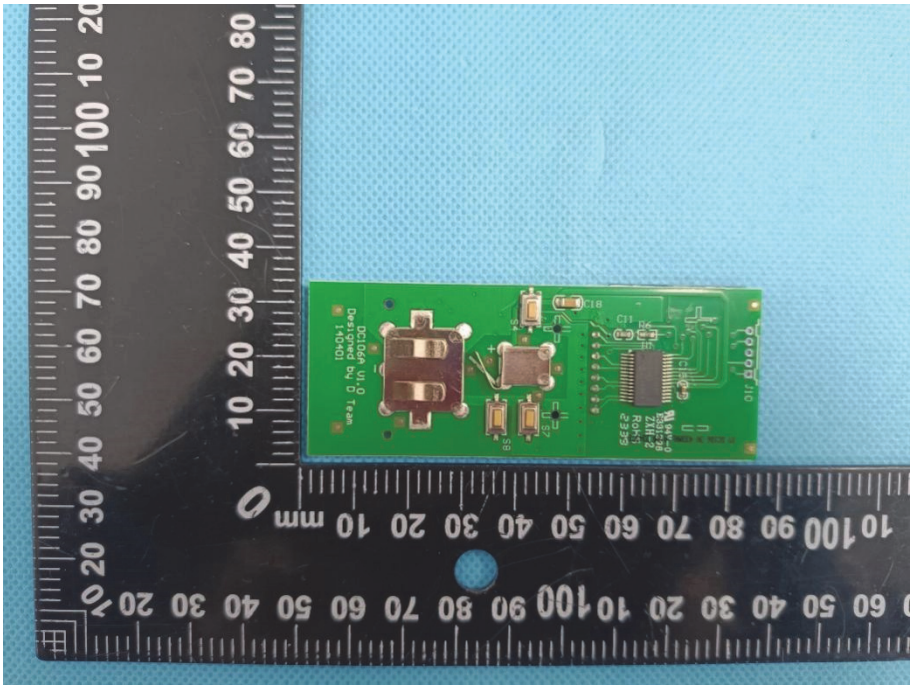
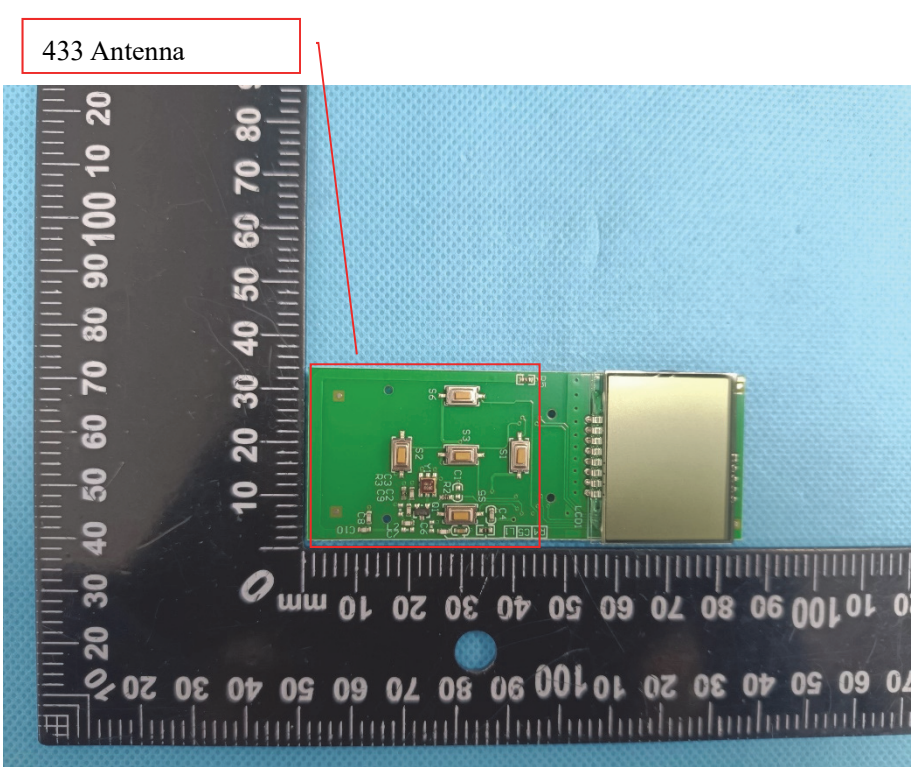
<p><b>EUT Housing and Board View 1</b></p>	
<p><b>EUT Housing and Board View 2</b></p>	

**EUT Housing and  
Board View 3**



**Solder  
Board-Component  
View 1**



<p><b>Solder Board-Component View 2</b></p>	 <p>A photograph of a green printed circuit board (PCB) component, likely a USB connector, placed on a black ruler for scale. The ruler shows measurements in millimeters (0 to 100) and centimeters (0 to 10). The PCB is oriented vertically. On the left side, there is a silver metal USB connector. Various electronic components are visible on the board, including a small integrated circuit (IC) labeled 'MAX9213' and several surface-mount components. The background is a light blue textured surface.</p>
<p><b>Antenna View</b></p>	 <p>A photograph of the same green PCB component, viewed from the opposite side. A red rectangular box highlights a specific area on the board, labeled '433 Antenna' with a red arrow pointing to it. The antenna area contains several small surface-mount components and traces. To the right of the antenna area, there is a large, rectangular, gold-colored component, possibly a battery or a large capacitor. The ruler and background are the same as in the previous view.</p>