

尺寸: 80x80mm



Smart Life

Thank you for using smart doorbell camera

FCC SDoC

NOTE: This equipment has been tested and found to comply with the limits for a Class B digital device, pursuant to part 15 of the FCC Rules. These limits are designed to provide reasonable protection against harmful interference in a residential installation. This equipment generates, uses and can radiate radio frequency energy and, if not installed and used in accordance with the instructions, may cause harmful interference to radio communications. However, there is no guarantee that interference will not occur in a particular installation. If this equipment does cause harmful interference to radio or television reception, which can be determined by turning the equipment off and on, the user is encouraged to try to correct the interference by one or more of the following.

measures:

- Reorient or relocate the receiving antenna.
- Increase the separation between the equipment and receiver.
- Connect the equipment into an outlet on a circuit different from that to which the receiver is connected.
- Consult the dealer or an experienced radio/TV technician for help.

RF Exposure Information:

This equipment complies with FCC radiation exposure limits set forth for an uncontrolled environment. This equipment should be installed and operated with minimum distance 20cm between the radiator & your body.

FCC Statement:

This equipment has been tested and found to comply with the limits for a Class B digital device, pursuant to part 15 of the FCC Rules. These limits are designed to provide reasonable protection against harmful interference in a residential installation. This equipment generates, uses and can radiate radio frequency energy and, if not installed and used in accordance with the instructions, may cause harmful interference to radio communications. However, there is no guarantee that interference will not occur in a particular installation. If this equipment does cause harmful interference to radio or television reception, which can be determined by turning the equipment off and on, the user is encouraged to try to correct the interference by one or more of the following measures:

- Reorient or relocate the receiving antenna.
- In crease the separation between the equipment and receiver.
- Connect the equipment into an outlet on a circuit different from that to which the receiver is connected.
- Consult the dealer or an experienced radio/TV technician for help.

Caution: Any changes or modifications to this device not explicitly approved by manufacturer could void your authority to operate this equipment.

This device complies with part 15 of the FCC Rules. Operation is subject to the following two conditions: (1)This device may not cause harmful interference, and (2)this device must accept any interference received, including interference that may cause undesired operation.

Basic Parameters

| | |
|---|--|
| Product Name: Video doorbell | |
| Resolution: 2/3/4MP | PIR human detection: Supports PIR detection to wake up |
| Day and night conversion: dual filters automatically switch | Two-Way Audio: support full duplex real-time calls |
| Local storage: 256G Micro SD card | Wireless Network : 2.4G 802.11 b / g / n |
| Supported platforms: Android / iOS | Audio input / output: -38dB microphone / speaker |

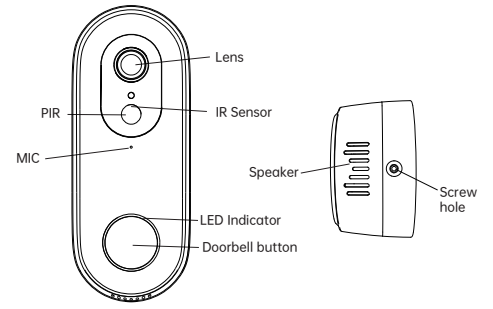
Component Description:

Reset Button: Long press "reset" hole 5sec, reset success.

It is recommended to insert 8-128GB high-speed Micro SD card, otherwise it will not be able to store, view historical video and support Important functions such as firmware upgrading.

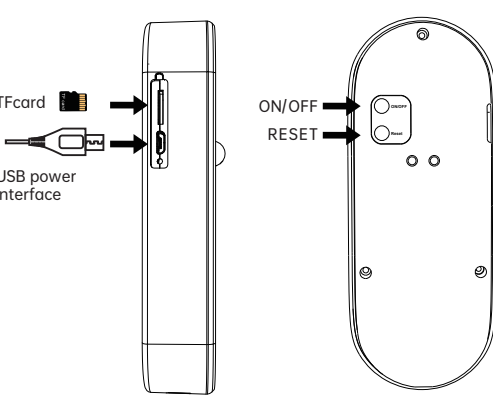
Packing list: smart doorbell camera × 1, manual × 1, USB Power Cord screw accessory package × 1

Product Introduction

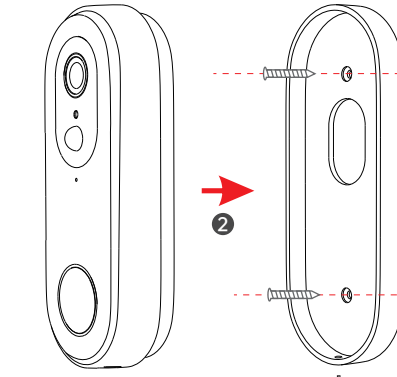


LED light working logic

- (1) Red light slow flashing: Waiting for pairing
 - (2) Blue light flashing: Wifi connecting
 - (3) Blue light on: Wifi connected
- light off: doorbell Standby
blue light on: PIR activate

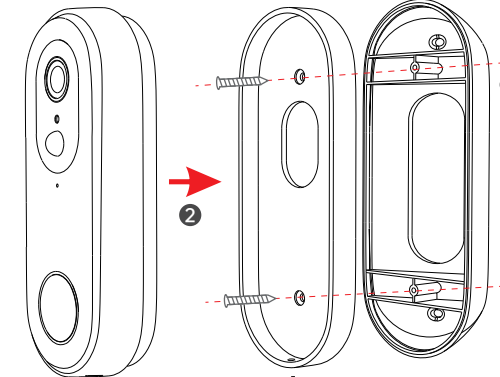


non-15-degree mounting bracket



- 1 Monut by Screw
- 2 Insert the doorbell
- 3 Tight it by the screw

15-degree mounting bracket



- 1 Monut by Screw
- 2 Insert the doorbell
- 3 Tight it by the screw

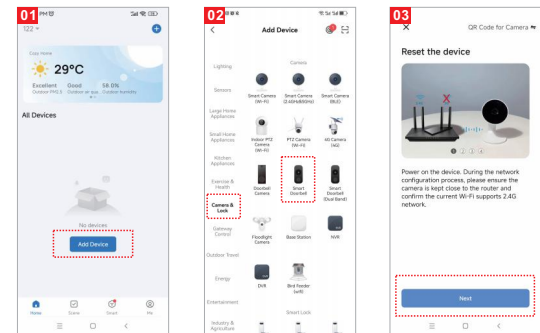
Install APP

Download APP: scan the QR code below to download and install.
Register and login: open the " Smart Life" APP to register and login according to the prompts.



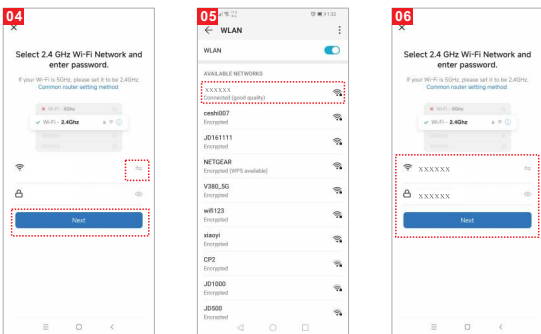
Add The Device-Scan QR code mode

- Make sure Wi-Fi is available and connected to the Internet.
- Connect the camera to the power, then system startup completed.
- Open "Smart Life" APP, press the "+" in the upper right corner of the main screen (Figure 01); choose "Security & Video Surveillance", click "Smart Camera" (Figure 02) to add camera; and then click "Next step" (Figure 03);

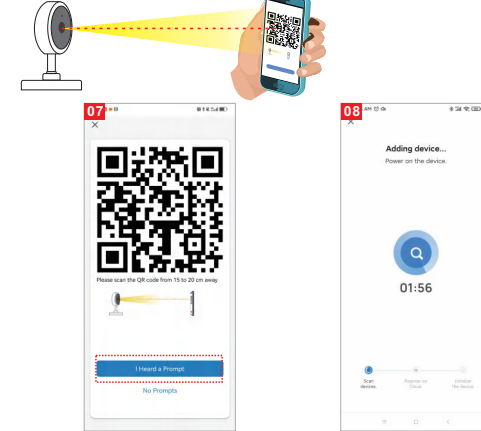


Please note that only 2.4 GHz Wi-Fi network is supported;

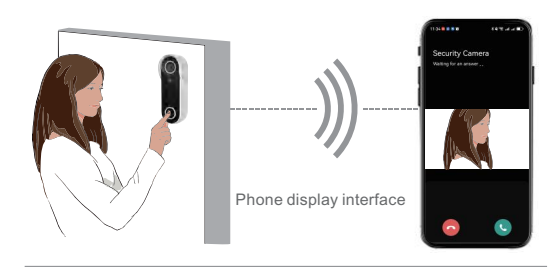
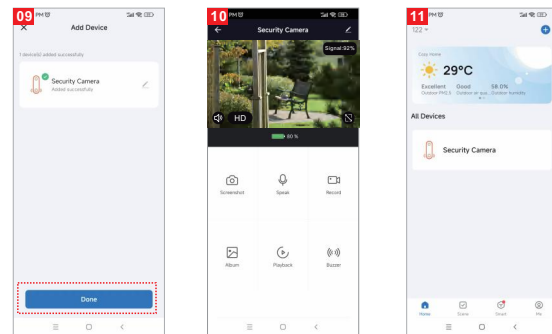
- If the mobile phone is not connected to wi-fi, please click "Connect to Wi-Fi" (Figure 04);
- It will jump to the WLAN interface and connects Wi-Fi (Figure 05);
- If the phone is connected to Wi-Fi (Figure 06);



- A QR code will prompt on your screen and you need to scan it with the Smart Camera. (the camera is about 20-30 cm away from the mobile phone lens). Then click "hear the prompt sound" (Figure. 07.)
- "connecting" (Figure. 08);



- connection completed(Figure 09), and click "Done";
- Then jump to preview interface (Figure 10)
- After closing the device preview interface, the interface returns to the APP home page. At this time, the connected device will appear on the APP home page (Figure 11). Then you can click directly to the device interface to see the monitoring situation without re-adding afterwards.



Attention

- Try to keep away from the metal space;
- Avoid the furniture , microwave oven blocked;
- Avoid the space where the audio, video and data lines are wound, and keep the space away from them as large as possible;
- Ensure that as close as possible to the coverage of wireless Wi-Fi signals. Switching network environment ;
- In the new network environment, please press the reset button about 5 seconds, then connect to the network.

The name and content of the harmful substances in the product

| Part Name | Harmful Substance | | | | | |
|-----------|-------------------|----|----|--------|-----|------|
| | Pb | Hg | Cd | Cr(VI) | PBB | PBDE |
| shell | ○ | ○ | ○ | ○ | ○ | ○ |
| Board | X | ○ | ○ | ○ | ○ | ○ |
| charger | ○ | ○ | ○ | ○ | ○ | ○ |
| annex | ○ | ○ | ○ | ○ | ○ | ○ |

This form is based on the provisions of SJ/T 11364.

This product conforms to RoHS environmental protection requirements. At present, there is no mature technology in the world to replace or reduce the lead content in the electronic ceramics, porcelain, optical glass, steel and copper alloy.

Maintenance records: _____

Maintenance time: _____

Fault conditions: _____

Fault cause: _____

Troubleshooting: _____

Return and exchange proof: _____

Date of validity: _____

Original device ID: _____

New device ID: _____

maintenance personnel signature: _____

Maintenance Department seal: _____

Maintenance voucher of intelligent

Customer: _____ Mobile: _____

Address: _____

Model: _____ Camera ID: _____

Device store: _____ Date of purchase: _____

Store address: _____

Store contact number: _____

Maintenance voucher of intelligent

Customer: _____ Mobile: _____

Address: _____

Model: _____ Camera ID: _____

Device store: _____ Date of purchase: _____

Store address: _____

Store contact number: _____