

# Dash Cam User Manual



## **INTRODUCTION**

Congratulations on purchasing your Camcorder! The contents of this manual are subject to change without notice. Note that the example screens and product illustrations shown in this User's Guide may differ somewhat from the screens and configuration of the actual camera.

The Car Camcorder integrates multi-functions of 4K Ultra HD video capture, high resolution photo capture and a compact form factor. It adopts video decoding technology of high performance and compression ratios to deliver excellent video quality. This camcorder is intended for in-vehicle shooting, which effectively enables the collection of evidence for driving accidents, daily life, traveling and outdoor activities. The Car Camcorder allows you to record video when mounted to your car's windshield in a wide, large angle. This quick guide explains how to use your camcorder and provides additional information, including precautions and technical specifications. Please read through it carefully and understand this quick guide before use. Keep it properly stored away for reference.

### **Safety and Handling Precautions**

- Do not take apart or attempt to service the camcorder yourself.
- Do not expose the camcorder to moisture, or extreme temperatures.
- Allow the camera to warm up when moving from cold to warm temperatures.
- Do not touch and put pressure on the camera lens.
- Do not expose the lens to direct sunlight for extended periods.
- Do not use abrasive chemicals, cleaning solvents or strong detergents to clean the product. Wipe the product with a slightly damp soft cloth.
- When the camera is used for an extended period of time, it is normal for the camera body to feel warm.
- Do not subject the LCD monitor to impact.
- To prevent the risk of fire or electric shock, do not expose this appliance to rain or moisture.

### **FCC Radiation Exposure Statement**

The antennas used for this transmitter must be installed to provide a separation distance of at least 20 cm from all persons and must not be co-located for operating in conjunction with any other antenna or transmitter.

# 1. GETTING STARTED

## 1.1 Overview



1	USB Charging Port	5	Power on/Power off/Mode Switch
2	Memory Card Slot	6	Lens
3	Rear Camera Port	7	Speaker
4	Display	8	Windshield Mount Port
		9	Rear Camera

## 1.2 Button and Functions Explanation

Function	Description
Display	Shows the current view and menu, options and different statuses of each mode.
Microphone	Built-in microphone for audio capture during video recording.
USB Port	Power port and data transfer port for transferring media to

	your computer.
Windshield Mount	Mount used to connect the camcorder to your windshield.
Memory Card Slot	Storage slot for inserting your Micro SD memory card.
Speaker	Built-in speaker output for playback of video files when audio recording is enabled.
Lens	Front capture device for all video and photo.
Rear Camera	Rear capture device for all video and photo

### 1.3 Memory Card Insertion and Removal

1. Ensure the camcorder is powered off.
2. Insert a MicroSD memory card into the MicroSD card slot with the gold pins facing the lens. Do not force it through the MicroSD card into the slot as it can only be inserted in one direction. Once successfully inserted, it will click in.
3. To remove the MicroSD card, simply push the MicroSD card in and it will bounce back out of the slot.



\*Do not remove or insert the memory card when recording. Doing so may cause the card to become damaged or cause data loss

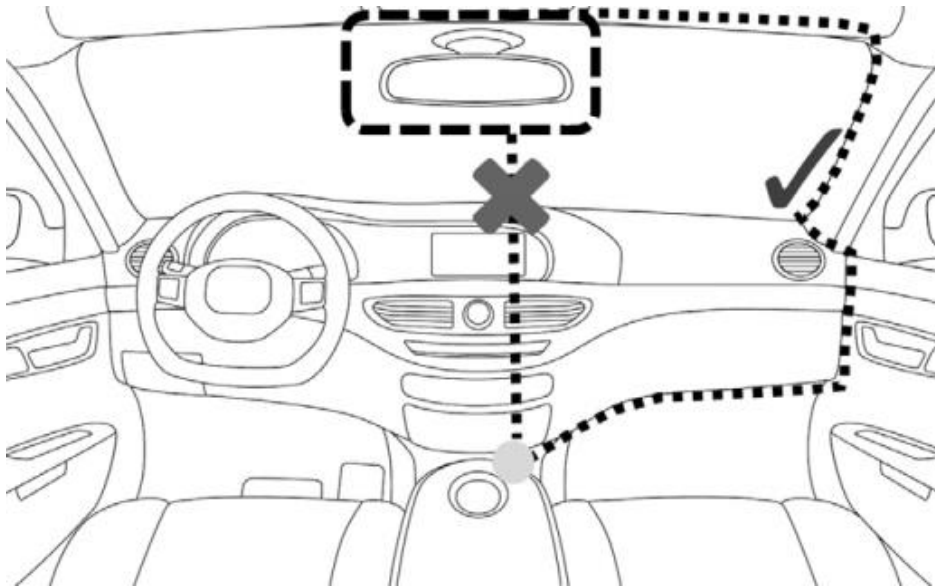
### 1.4 Windshield Mount

The windshield mount is included for mounting your camcorder to your windshield. Simply tear off the 3M film and attach to your windshield. Before applying to your windshield, make sure that your windshield is clean and free of any dirt or debris.



## 1.5 Mounting the Camcorder

The camcorder should be mounted on the windshield of your vehicle in a location where it does not interfere with your view through the windshield. The optimal location is to the right of or directly below the rearview mirror. When mounting the camcorder, make sure to run the power cable so that the cable does not interfere with your view through the windshield. See the diagram below. You can tuck the USB cable into your car interior's headliner and molding.



NOTE: Consult with local state laws in your area before installing your camcorder. Certain restrictions and limitations may apply to the placement of objects on the windshield of your vehicle.

## 1.6 Rear Camera Mounting

A certified professional should be used to install and ensure that the rear camera is installed properly.

The rear camera can be mounted in two different locations: (1) At the top of the rearwindshield for an outward view of the road, or (2) at rear of your

vehicle above the license plate for a reverse camera view.

1. Install on inside rear window

2. Install on car's license plate



When mounting the rear camera, the camera should always be mounted with the metal bracket at the top, like below. If the metal bracket is on the bottom, the image will appear upside down when viewed on the camcorder.



There are three options you can use to mount the rear camera: (1) With double-sided tape, (2) with screws, or (3) using both double-sided tape and screws.



Before mounting the rear camera, connect it to the camcorder to check the view from your chosen mounting location. If the view is acceptable, you can proceed with mounting the rear camera. Make sure that the mounting surface of the vehicle has been cleaned very well and is completely dry.

To use the double-sided tape, simply peel off the white paper one side and press that side firmly to the top of the metal bracket on the rear camera, like below. Then peel off the white paper on the other side and press the bracket firmly to the mounting surface.



To use screws, simply place the screws through the holes on the bottom of the metal bracket and use a Philips head screwdriver to fasten the screws.



\*Please note, screws should never be used when mounting the rear camera on glass.

## 1.7 Startup

### 1.7.1 In-Car Use

Connect the included auxiliary DC power adaptor to your car's power port. Plug the USB plug into the camcorder's USB port. Charging will begin immediately. Please note that the camcorder's internal battery has a very limited capacity and is only intended for use in emergency use situations.

### 1.7.2 Copy Data to Computer

If you want to copy the camcorder videos/photos to computer, take out the Micro SD card and insert a card reader to connect computer, then you can copy and save the data as you desired, and you could also playback videos/photos on computer

## 2. USING YOUR CAMCORDER

## Quick Use Instructions

Simply insert the memory card into the card slot, and insert the auxiliary power adaptor into the camcorder's USB port and your car's power port. The camcorder will automatically power on and begin recording a video file.

To stop recording at any time, long press the **POWER** button. You may also remove the auxiliary DC power adaptor at any time to automatically save a recording and power the camcorder off. Just mount it to your windshield, plug in the power and drive!

## 3.CAMCORDER OPERATION

Once you have inserted the MicroSD memory card and plugged your camcorder into a power source, your camcorder will automatically power on and begin recording. To stop recording, need manually power your camcorder off by pressing the **POWER** button for 3 seconds.

There are 3 operation modes available for use. To cycle through the different modes, simply press the **POWER** button in sequence:

**Front camera preview**

**APP download QR code**

**Screensaver interface**



## 4. Wireless Connectivity

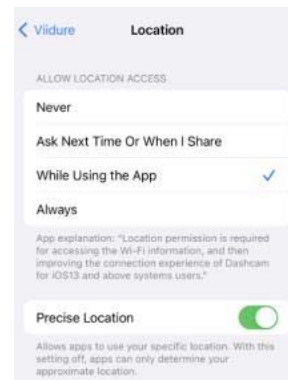
### 4.1 Connecting to the Viidure App

To wirelessly operate the car camcorder you will need to install the “**Viidure**” app on your Android or iOS device. To download the app, search for “**Viidure**” in the Apple App Store or Google Play Store. You can also scan the QR code below to find the app.





1. Open your phone's wireless menu, turn all wireless settings on and connect to the network named "XXXX" then join the network, password is 12345678.
2. Exit the wireless menu on your smartphone and open the "Viidure" app to launch remote operation of the camcorder.
3. Once connected successfully, launch the **Viidure** app. When launching the app for the first time, you will be prompted to allow the **Viidure** app to use your location.
4. Select "Allow While Using App" or "Allow Always".
5. This will allow the app to communicate with your camcorder and will allow the app to work properly. The app will not connect to your camcorder if you select "Don't Allow"



6. As part of the iOS operating system, your smartphone's Location Settings must be enabled in order to allow proper communication between your smartphone and your camcorder. Selecting "Don't Allow" will prevent your camcorder from connecting to the **Viidure** app.
7. If you selected "Don't Allow", then you can change this setting by going into your iOS Settings, selecting the **Viidure** app, selecting the Location settings and select "While Using App"
8. Then, tap "Add Camera" to connect to the camcorder.

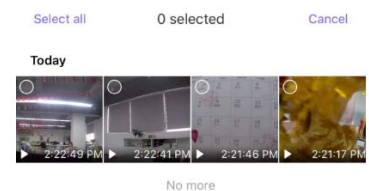


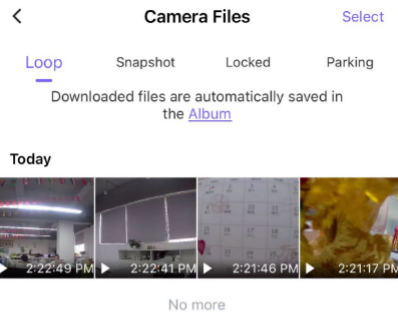
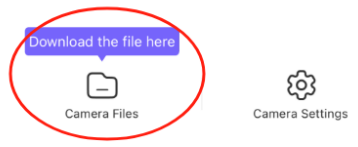
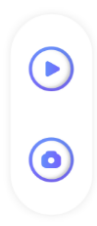
## 4.2 Operating the Viidure App

Your camcorder will now be operable via your smartphone. The camcorder will automatically start recording when first connected to the app. Tap the camcorder icon with the pause symbol in it to stop recording. Tap that icon to start and stop recording at any time. Tap the camera icon to capture an image.

## 4.3 Viewing Media on the App

1. To view the recorded images and videos stored on the memory card on the app, tap “Camera File” located at the bottom left corner of your smartphone’s screen.
2. All of the different media saved to the memory card can be found here. Tap the photo or video file you wish to view. From this screen media can be saved to your smartphone and deleted. If a photo or video is deleted on the app, it will also be removed from the memory card in the camcorder.
3. Downloaded media can be found in the “Album” section of the app. From the Album, downloaded files can be saved directly to your smartphone.

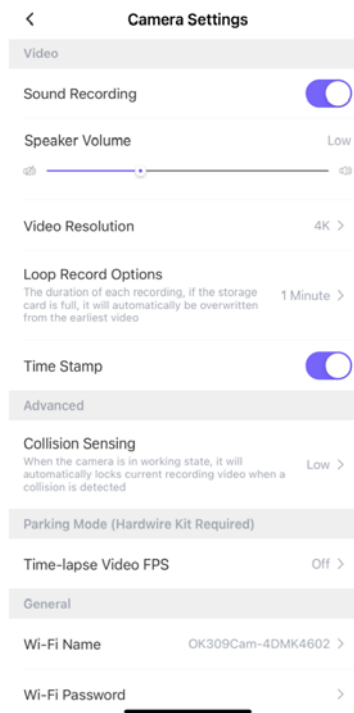
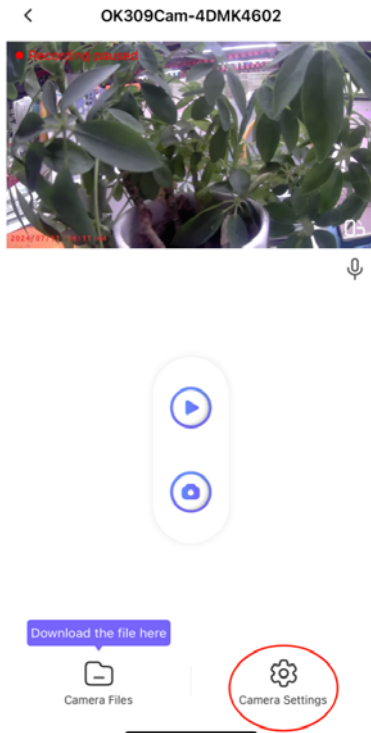




#### 4.4 Changing Camcorder

Certain camcorder settings can be changed. Press the gear icon located at the bottom right of the camera screen to launch the settings menu.

Press the gear icon located at the bottom right of the camera screen to launch the settings menu.



### 4.1.1 Sound Recording

This setting allows you to set the built-in microphone **ON** or **OFF** during a video recording. Once you select an option, your camcorder will either record audio within the video file, or record a video file without audio captured. You can select from **Off** and **On**.

### 4.1.2 Speaker Volume

This setting allows you to enable or disable the speaker volume level. You can select from **Off**, **Low**, **Medium** and **High**.

### 4.1.3 Loop Recording

This setting allows you to set a maximum duration for each video clip recorded. Once you select an option, your camcorder will record video clips in this time interval only. Once your selected duration recording time is reached, the camcorder will end the recording and begin recording a new video file seamlessly.

You can select from **Off**, **1 Minute**, **2 Minutes** and **3 Minutes**.

### 4.1.4 Time Stamp

This setting allows you to imprint a date & time onto your recorded video files. Once a video file is recorded with the imprint, the imprint cannot be removed. You can select from **Off** and **On**.

### 4.1.5 Collision Sensing

This setting allows you to set the sensitivity level for automatic recording upon collision. When triggered or when the camcorder thinks a collision occurred, it will automatically begin recording and the recording will be stored with a lock icon. The video file will be locked and protected from deletion.

You can select from **Off**, **Low**, **Medium** and **High**.

### 4.1.6 Time-lapse Video FPS

This function allows you to set the amount of time in between images.

You can select from **Off**, **1S**, **2S**, and **3S**.

NOTE: By selecting '**3S**', the camcorder will capture a photo every 3 seconds and create a time lapse video. To disable Time-Lapse recording, select '**Off**' in this submenu.

## Product Specifications

Product Name	4K WIFI Dual Recording Dash Cam
LCD Display Screen	1.5" LCD screen

<b>Camera Lens</b>	High-resolution ultra wide-angle Camera lens Front Lens: 135°, Rear Lens: 100°
<b>Video Resolution</b>	Front Lens: 3840*2160 25fps, Rear Lens: 1920*1080 25fps
<b>Photo Resolution</b>	Front Lens: 3840*2160, Rear Lens: 1920*1080
<b>File Format</b>	Video: TS, Photo: JPG
<b>External Storage</b>	Micro SD card(recommended more than Class 10-speed, capacity 8G-256G )
<b>Loop Recording</b>	Support seamless loop recording
<b>Time Stamp</b>	Support
<b>Collision Sensing</b>	Support
<b>Time-lapse Video</b>	Support
<b>WIFI with APP</b>	Support FOR iOS and Android
<b>Microphone</b>	Built-in
<b>Speaker</b>	Built-in
<b>Night Vision</b>	Support Starlight Night Vision
<b>Power Interface</b>	5V 2000mA
<b>Storage Temperature</b>	-20 ~70°C
<b>Operating Temperature</b>	0 ~50°C
<b>Operating Humidity</b>	15-65%RH

This device complies with Part 15 of the FCC Rules. Operation is subject to the following two conditions: (1) this device may not cause harmful interference, and (2) this device must accept any interference received, including interference that may cause undesired operation

This device has been tested and found to comply with the limits for a Class B digital device, pursuant to Part 15 of the FCC Rules. These limits are designed to provide reasonable protection against harmful interference in a residential installation. This device generates, uses and can radiate radio frequency energy and, if not installed and used in accordance with the instructions, may cause harmful interference to radio communications.

However, there is no guarantee that interference will not occur in a particular installation. If this device does cause harmful interference to radio or television reception, which can be determined by turning the device off and on, the user is encouraged to try to correct the interference by one or more of the following measures:

- Reorient or relocate the receiving antenna.
- Increase the separation between the device and receiver.
- Connect the device into an outlet on a circuit different from that to which the receiver is connected.
- Consult the dealer or an experienced radio/TV technician for help

Changes or modifications not expressly approved by the party responsible for compliance could void the user's authority to operate the equipment