

深圳市亿圣邦科技有限公司 样品承认书

SPECIFICATION FOR APPROVAL

公司名称 (客户填写) : 深圳市晟达智联科技有限公司
物料代码 (客户填写) : _____
规格型号 (客户填写) : S01
承认日期 (客户填写) : _____

Manufacturer : Shenzhen YiShengBang technology Co., LTD

Manufacturer's address : 101, Building C, Shenzhen Qianwan Hard Science and Technology

Industrial Park, Nanchang Community, Xixiang Street, Baoan District, Shenzhen

承 认 签 章					
供 应 商 承 认 (SLK 填写栏)			深圳市晟达智联科技有限公司		
工 程 师	品 质	结 构	工 程 师	审 核	批 准
陈仕联	郭亮	刘才亮			
批 准	林美财		盖 章 签 署		
日 期	2023-11-16		日 期		
批示: <input type="checkbox"/> 接受 <input type="checkbox"/> 有条件接受					
备注 (客户填写) :					

供应商名称: 深圳市亿圣邦科技有限公司

供应商地址: 深圳市宝安区深圳前湾硬科技产业园 C 栋 101

电 话: 18025305599

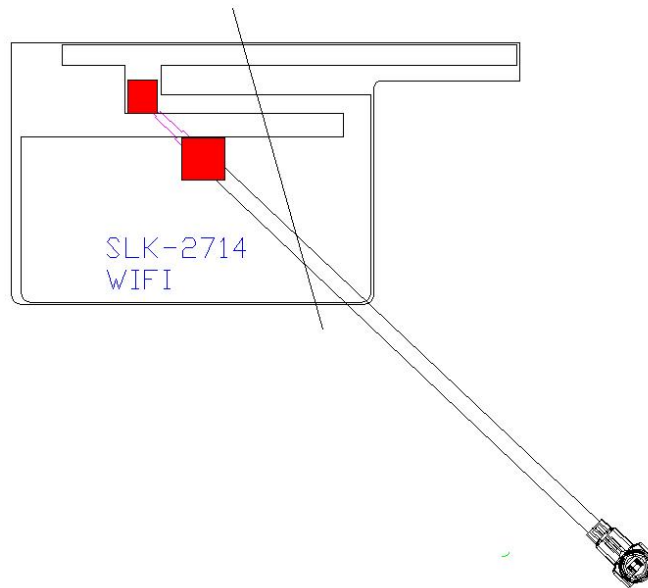
电 话: 18666299104

WIFI/BT Antenna (2714)

1.Explanation of Product number :

S L K - S D Z L - 2 7 1 4 - R - 2 5 0 I V - B

1 2 3 4 5



Product Code:

(1) Customer:

SDZL:晟达智联

(2) Project:

2714: SLK-SDZL-2714(WIFI+GPS antenna)

(3) Welding Position

R: Right

(4) Cable Length:

250IV: 250*0.81MM四代端子

(5)Cable Color

B:Black

2. Features

*Stable and reliable in performances

*Compact size

*RoHS compliance

3. Applications

- * IEEE802.11 (a/b/g/n)
- * Hand-held devices when WIFI (802.11a/b/g/n) functions are needed

4. Description

Holy bond's FPC antenna series are specially designed for WIFI (802.11 a/b/g/n) applications. Based on Holy bond's proprietary design and processes, this FPC antenna has excellent stability and sensitivity to consistently provide high signal reception efficiency.

5. Electrical Specifications

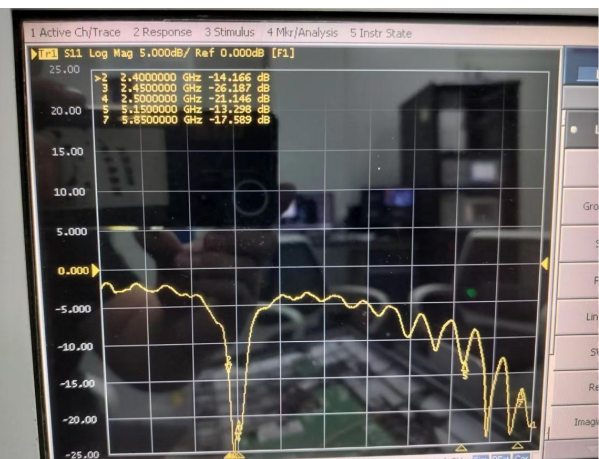
5-1

Characteristics	Specifications	Unit
Outline Dimensions	26.81x13.8x 0.12	mm
Center Frequency	2.4-5.85	GHz
Bandwidth(under-10dB return loss)	130min	MHz
VSWR	3max	

5.2

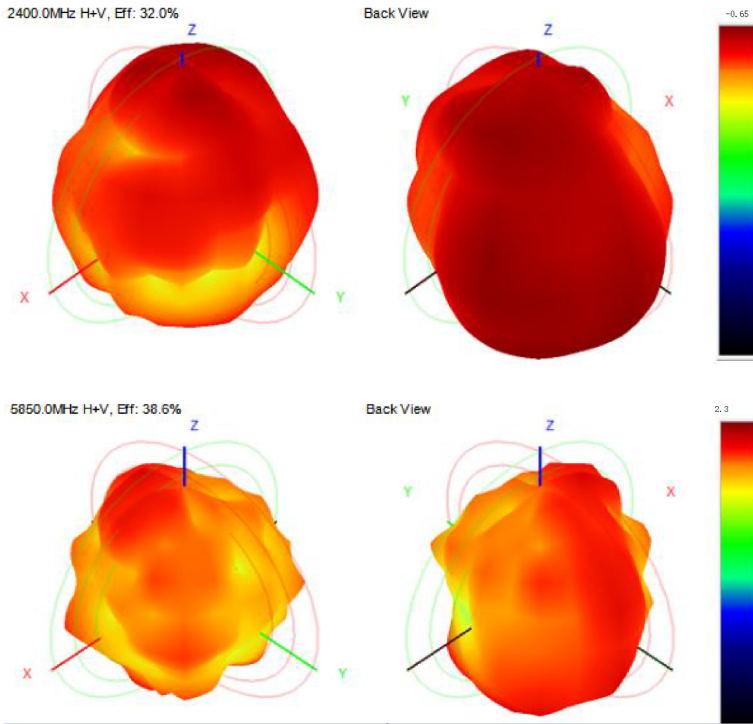
VSWR

S11



5-3.WIFI Antenna Gain/Efficiency/Radiation Pattern of 3D

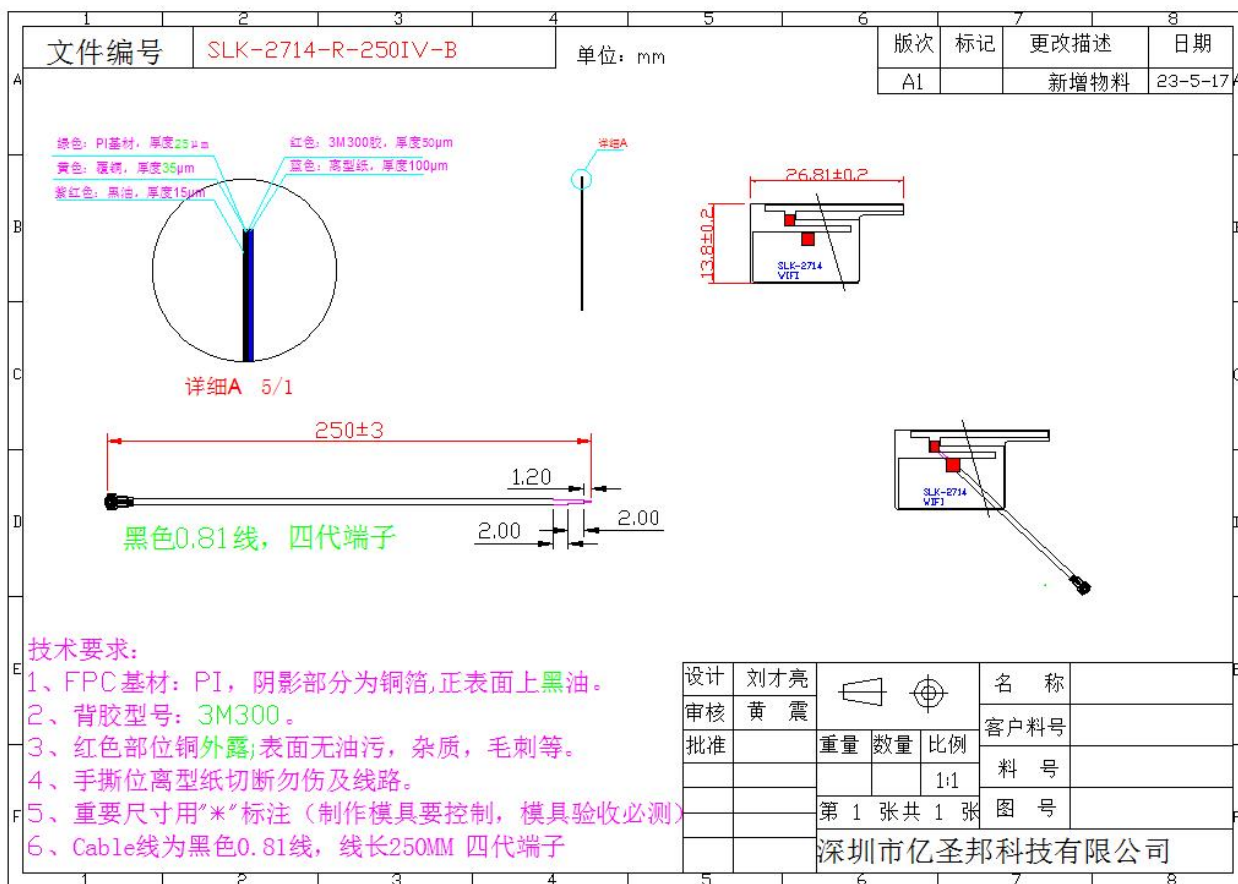
Frequency (MHz)	Efficiency (dBi)	Gain (dBi)	Efficiency (%)
1570.0	-6.41	-1.14	22.87
1575.0	-6.01	-0.61	25.06
1580.0	-6.15	-0.79	24.25
2400.0	-4.95	-0.65	31.96
2410.0	-4.98	-0.75	31.74
2420.0	-4.97	-1.02	31.88
2430.0	-4.84	-1.03	32.82
2440.0	-4.90	-0.95	32.39
2450.0	-4.98	-1.33	31.73
2460.0	-4.72	-0.86	33.76
2470.0	-5.11	-1.26	30.83
2480.0	-5.11	-1.18	30.81
2490.0	-5.00	-1.04	31.61
2500.0	-5.11	-1.16	30.84
5150.0	-6.90	-0.03	20.40
5350.0	-4.59	2.30	34.73
5550.0	-4.63	1.77	34.47
5750.0	-5.27	1.18	29.71
5850.0	-4.13	2.27	38.60



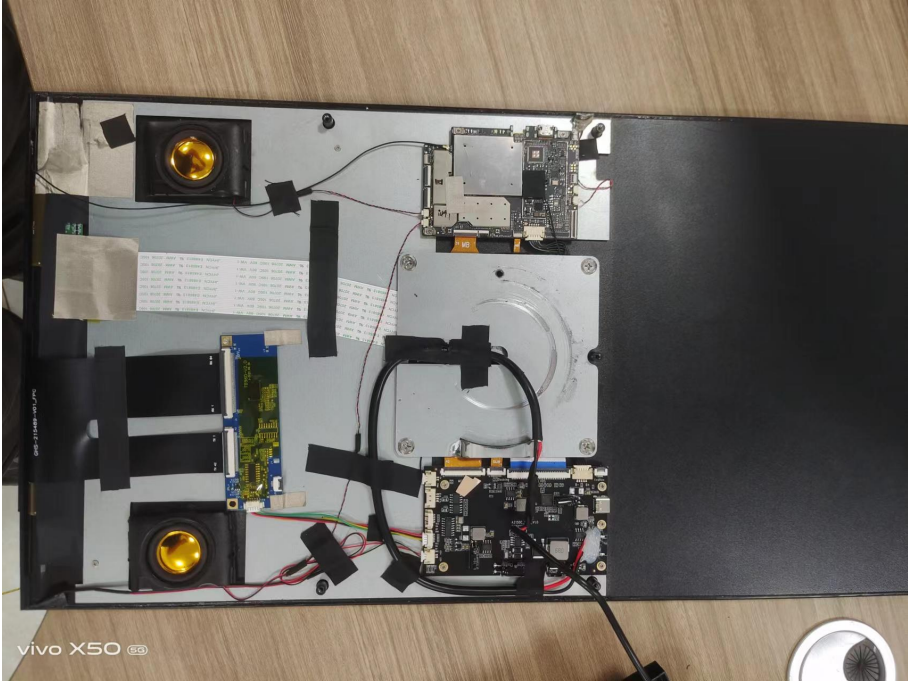
WIFI 有源测试

频段	1	6	11
B-TRP-11Mbps	10.1	10.83	10.3
B-TIS-11Mbps	-73.48	-74.36	-74.92
G-TRP-54Mbps	9.16	9.56	9.07
G-TIS-54Mbps	-63.77	-63.79	-63.57
N-TRP-MCS7	9.73	9.31	9.24
N-TIS-MCS7	-60.06	-60.12	-60.42
频段	36	149	165
A-TRP-54Mbps	5.59	5.77	6.17
A-TIS-54Mbps	-60.33	-60.16	-60.45

6. Antenna Dimensions (unit: mm)



7. Antenna Picture



WIFI 天线