



# SMART DISPLAY

Smart Mobile Smart Screen  
Users' Manual



# SMART DISPLAY



**SMARTDISPLAY**

WELCOME TO USE

MOVE WISDOM

**RANDOM**

SMART  
DISPLAY

## Smart Mobile Screen

It is different from the traditional screen or TV because of its built-in universal wheels, which can be moved at will and follow your steps anywhere.No matter in the living room,bedroom,kitchen,or even office and camping. Truly satisfy you with the use of multiple venues.

It integrates the functions of battery life, multi-terminal projection and screen rotation, and completely gets rid of the shackles of wires.  
Provide you with a new viewing experience anywhere, anytime, and as you like.

## Reminder:

Thank you for choosing our smart mobile screen!

Please read this users 'manual carefully in advance to ensure proper operation and installation.

## Warn

- ★ Only use the supplied power adapter accessory from the factory.
- ★ Do not block or cover these slots and openings on the machine,because these are for ventilation and heat dissipation.
- ★ Do not use or store the machine in a dusty, humid or high temperature environment.
- ★ Do not disassemble and repair it by yourself when the machine breaks down, please contact the original factory or dealer to solve it.
- ★ Do not continue to use it if the lead wire of the power adapter is damaged, otherwise it may be dangerous.Avoid stepping on the power cord or power adapter to avoid dangers such as electric leakage caused by wire damage.
- ★ Please unplug the power cord during thunderstorms or when the machine will not be used for a long time.
- ★ When in use, please do not place the machine on the edge of the table or where children can easily reach, to avoid the machine from falling or hurting children.
- ★ Do not squeeze the display screen hard during transportation, and do not damage the display screen with sharp objects or hard objects.
- ★ Please clean the screen with a dry sofy cloth or do not use any kind of solvents, such as alcohol or benzine, as it may damage the surface. Please use a dry soft cloth or a soft cloth slightly dampened with mild detergent to clean the machine. Do not use any kind of solvents, such as alcohol or benzine, as it may damage surface treatment layer.
- ★ Be sure to educate children about the dangers of climbing on this product, as falling or toppling of this product can cause serious personal injury.
- ★ Do organize the cables connected to the product in a timely manner so that they cannot be tripped over, pulled or caught.

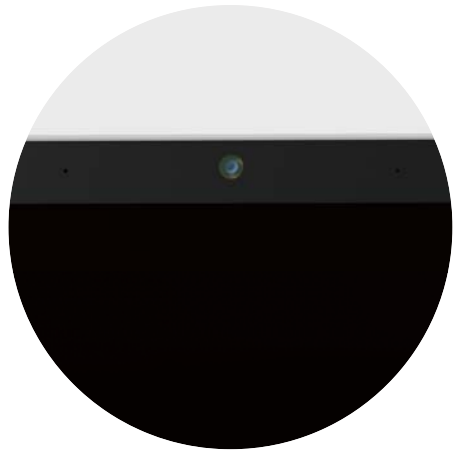
Note: For safety, please use a power adapter which has obtained the CCC certification and meets the requirements of the standard.

# Warranty Specification

## WARRANTY

1. We provide for one year free warranty from the date of purchase or as agreed in the contract.
2. The free warranty service will not be included as follows:
  - Fault or damage caused by man-made or natural disasters.
  - Break down caused by failure to follow the instructions and precautions.
  - Failure caused by the user disassembling the machine by himself.
3. The responsibility of the warranty is limited to maintenance of the products only.
4. Please feel free to call us if there is any unclear about the maintenance and guarantee after the warranty period.





8MP Front Camera



Power button: press to enter shutdown confirmation: off screen/shutdown/restart



Volume+: system volume increase



Volume-: System volume decrease



## Warranty Card

✂

Warranty for product

Customer		Tel	
Address			
Model No			
Part No			
Purchse date			

\* Please keep this card properly as a maintenance proof

## Declaration of Toxic and Hazardous Substances in Electronic Information Products

Part No	Toxic and Hazardous Substances or Elements					
	Lead (Pb)	Mercury (Hg)	Cadmium (Cd)	Hexavalent chromium (Cr <sup>6+</sup> )	PBBs (PBB)	Polybrominated Diphenyl ethers (PBDE)
Accessory	×	○	○	○	○	○
Plastic Case	○	○	○	○	○	○
Metal Parts	○	○	○	○	○	○
PCB Board	○	○	○	○	○	○
LCD Screen Display	○	○	○	○	○	○
Lithium Polymer Battery	○	○	○	○	○	○
Touch Screen	○	○	○	○	○	○
Speaker	○	○	○	○	○	○
Package	○	○	○	○	○	○

- : Indicates that the content of the toxic and hazardous substance in all homogeneous materials of the part is within the limit requirements specified in GB/T26572-2011
- ×: Indicates that the content of the toxic and hazardous substance in at least one homogeneous material of the part exceeds the limit requirement specified in GB/T26572-2011

Notes: 1. This product is produced according to environmental protection design and lead-free production process, and complies with EU RoHS requirements.

2.The toxic and hazardous substances marked with “×” in the table are mainly due to the current technical level development restrictions and no irreplaceable products

\*This product contains a rechargeable lithium battery. It is strictly forbidden to disassemble, hit, squeeze or throw it into fire.

3.Circuit board components: including printed circuit boards and their components, electronic components, solder joints, etc.

4.Depending on the product model, the product you purchased may not contain all of the above components.



The environmental protection use period of the product is 10 years, and the logo is shown on the left.

Some replaceable parts will have a different environmental use date stamped on it

This environmental protection use period only applies to the product working under normal use.



## Operation instruction

## Cautions:

1. Please read all instructions carefully before using the product.
2. When cleaning the mobile screen, please unplug the power cord, turn off the power switch, do not use liquid cleaning fluid or spray cleaner, wipe the screen with a soft damp cloth, if it is still not clean, please use LCD screen cleaner.
3. Do not use accessories not recommended by the manufacturer, otherwise it may cause danger.
4. When unplugging the base power interface or the power cable of the power adapter, please hold the power plug. Do not pull the power cable directly by hand to unplug it.
5. This mobile display should only be operated with a power source of the type indicated on its nameplate. If you have doubts about the type of power supply you are using, please consult the mobile display dealer or local power supply bureau.
6. Because there will be high voltage or other dangers when opening or moving the case, please do not repair the monitor by yourself, but contact qualified maintenance personnel for comprehensive maintenance.
7. When the following situations occur, first unplug the power plug of the bottom battery compartment or the power adapter from the socket and contact qualified maintenance personnel for maintenance:
  - a. The power cord or power plug is damaged or frayed.
  - b. The monitor has been dropped or the case has been damaged.
  - c. When the display is obviously abnormal, it indicates that it needs to be repaired.
8. Please place the monitor in a well-ventilated environment away from strong light, high temperature or humidity.
9. Please store the display at a room temperature of 0°C~40°C, if it exceeds this range, it may affect normal use.

## Safety Tips! (Stability Hazard)

The monitor may fall, causing serious personal injury. Many injuries, especially among children, can be avoided by taking simple precautions such as:

- Please use the cabinet, shelf, or mounting method recommended by the monitor manufacturer.
- Please use furniture that can safely support the monitor.
- Please educate children about the dangers of climbing on furniture to access the display or its controls.
- Be sure to organize the wires and cables connected to the monitor so that they cannot be tripped over, pulled or caught.
- Never place the monitor on an unstable or inclined position.
- If you want to place the monitor on taller furniture (such as a cabinet or bookshelf), you must fix the furniture and the monitor on a suitable support point.
- Never place the monitor on cloth or other items that may get between the monitor and the supporting furniture.
- Do not place toys, remote controls and other items that may tempt children to climb on the monitor or the furniture on which it is placed. To retain and relocate an existing monitor, the same precautions as above should be taken.

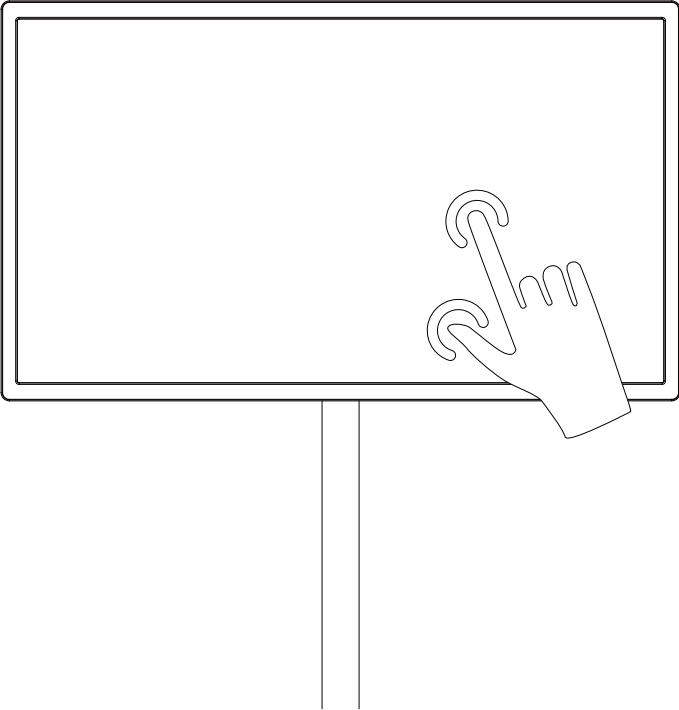
## Product Specification

CPU	octa-core 4*ARM Cortex A73@2.0GHz 4*ARM Cortex A53@2.0GHz
RAM	6GB
Hard Disk	128GB
Operating System	Android 13
Screen Size	21.5 inch
Resolution	1080x1920 IPS
Point of touch	Capacitive touch screen
Proportion	16: 9
Wi-Fi	2.4G/5G dual-band WiFi, Bluetooth 5.0
Multiple touch points	10
Brightness	250-300cd/m <sup>2</sup>
Color gamut	100%SRGB
Refresh rate	60HZ
Microphone input	Support external microphone input
Type-c	Support full function (except charging function)
Screen projection	Wireless projection screen, on-line projection screen
Button	Power/Volume+/Volume-
Camera	8MP Front Camera
Speaker	4Ω 3W Bass stereo horn*2
Microphone	Built-in microphone
Power supply	12V 23400MAH
Power adapter	12V 2.5A
Stand	Movable base, 180°rotation adjustment
Working temperature	0 ~ 50°C

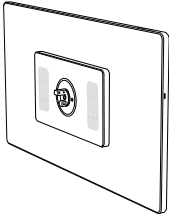


# Touch Screen

It adopts INCELL full high-definition ten-point capacitive touch LCD screen.



# Accessories



Monitor



Stand



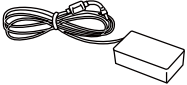
A round base



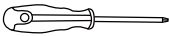
Cross screw



Users' manual



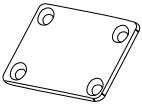
Power adapter



Phillips screwdriver



Hex screwdriver



cover



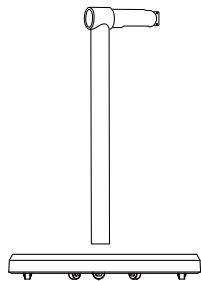
Hexagon socket screws

If any of the above is missing, please contact the product dealer.  
Note: Please refer to the actual configuration for specific accessories. Please save all packing materials for future removal.

## Product installation

When the product is installed and assembled, please be sure to lock the fixing screws of the bracket. The bracket falling may cause damage to the product or personal injury.

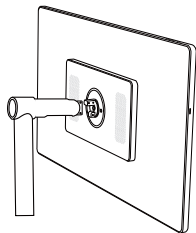
- The product has a certain weight, please ensure that at least two people cooperate to assemble it when unpacking and installing.
- Do not use foreign matter (oil, grease, etc.) on the screws when assembling the product.
- After the product is installed, do not remove the cable holder and screws.
- For daily use, please make sure that the product is moved in an upright position. If the product is tilted excessively, there is a risk of tipping over, resulting in product failure or personal injury.



- 1 Open the package box, take out the stand and base, align with the chassis position, and insert the support.



- 2 The bottom of the chassis has a screen bracket fixing screw hole, screw in, fixed.



- 3 Take the monitor out of the box and connect the machine. Place on the bracket and tighten the fixing screws.



- 4 There is a power cable connecting the screen and the battery inside the base. You need to manually connect the interface and cover the cover. Ready to use.

## Battery

This product contains a built-in battery in the stand, which can be used for a period of time without connecting to other power sources. The power indicator light will display four lights in descending order according to the remaining battery power. The battery LEDs will light up sequentially during charging or when charging is required.



●●●●  
Sufficient batter

●●●○  
Moderate battery

●○○○  
Low battery

Note: press the power switch

### Note: press the power switch to pay attention

- It takes about 10 hours to charge while using, and it only takes 3 hours to quickly charge with the power off.
- The battery life and usage time after charging will decrease proportionally with the usage time of the product.
- The battery cannot be charged under extreme conditions.
- In standby mode, the remaining battery power will naturally decrease.
- In order to prolong the battery life, it is recommended to charge the battery after using it for a period of time instead of keeping the battery fully charged.
- Keeping the battery at 50% helps extend battery life.
- The maximum usage time after charging for long battery life is 5 hours.
- The standard use time in this manual is based on the value of this laboratory. So actual times may vary depending on usage.
- Using time may be influenced by various factors, including operating temperature of the connected device, using time and user settings, etc.

## **FCC WARNING**

This device complies with part 15 of the FCC Rules. Operation is subject to the following two conditions: (1) this device may not cause harmful interference, and (2) this device must accept any interference received, including interference that may cause undesired operation. Any changes or modifications not expressly approved by the party responsible for compliance could void the user's authority to operate the equipment.

NOTE: This equipment has been tested and found to comply with the limits for a Class B digital device, pursuant to Part 15 of the FCC Rules. These limits are designed to provide reasonable protection against harmful interference in a residential installation. This equipment generates, uses and can radiate radio frequency energy and, if not installed and used in accordance with the instructions, may cause harmful interference to radio communications. However, there is no guarantee that interference will not occur in a particular installation.

If this equipment does cause harmful interference to radio or television reception, which can be determined by turning the equipment off and on, the user is encouraged to try to correct the interference by one or more of the following measures:

- Reorient or relocate the receiving antenna.
  - Increase the separation between the equipment and receiver.
  - Connect the equipment into an outlet on a circuit different from that to which the receiver is connected.
  - Consult the dealer or an experienced radio/TV technician for help.
- To maintain compliance with FCC's RF Exposure guidelines, This equipment should be installed and operated with minimum distance between 20cm the radiator your body: Use only the supplied antenna.