



Li Time

LiFePO4

36V 100Ah



PRODUCT (100A BMS) **MANUAL**

Lithium Iron Phosphate Battery(LiFePO4)

PRODUCT OVERVIEW

38.4V 100AH BATTERY

Operating Voltage: 38.4V

Charging Voltage: $43.2V \pm 0.6V$

Recommend Charge Current: 20A (0.2C)

Max Continuous Discharge Current: 100A

Max. Continuous Output Power: 3840W / 7680W in 72V (2 in series)

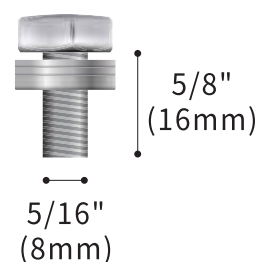
Max. Continuous Outboard Motor Horsepower: 5hp / 10hp in 72V (2 in series)



ADDITIONAL COMPONENTS

M8- 5/8" (16mm) Terminal Bolts

The terminal bolts are used to secure multiple cable lugs to a single battery terminal. The bolts can be replaced with M8 bolts of other lengths based on actual needs.



Insulating Caps for Bolts

BATTERY REPLACEMENT STEPS FOR ELECTRIC OUTBOARD MOTOR

The 36V 100Ah Smart Outboard Motor batteries are compatible with most of 36V 5hp/72V 10hp (when in 2S) electric outboard motors on the market.

Below is an example of the installation steps for an electric outboard motor, which will vary depending on the specific model of the electric outboard motor.

Step
1

Make sure the outboard motor is turned off.

Step
2

Find the original old battery in the boat compartment. Turn off the battery switch. Disconnect the cables from the original battery pack.

Step
3

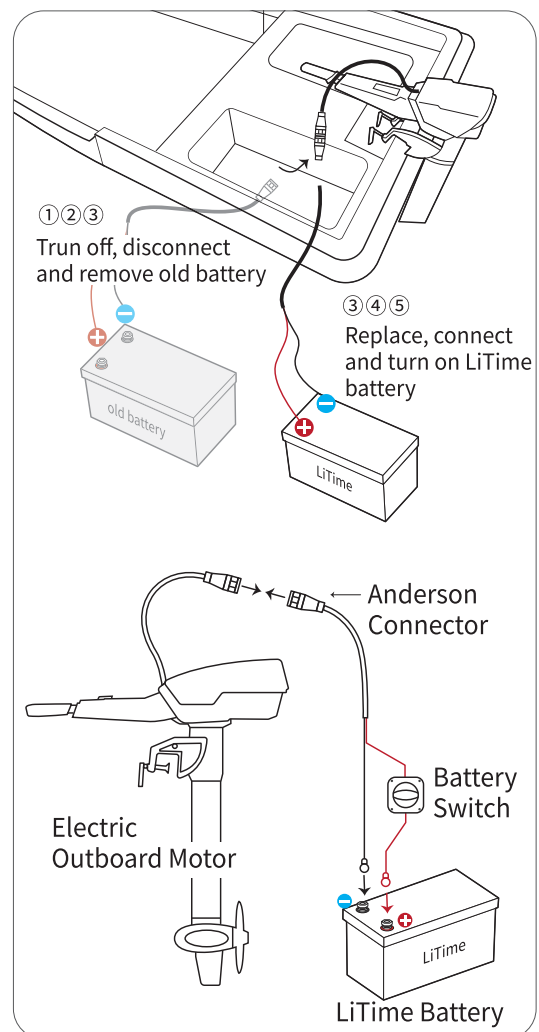
Remove the original battery. Put the new battery in the battery compartment.

Step
4

Use the original cables to connect the battery to the outboard motor + to +, - to -.

Step
5

Check whether all connections are tight, turn on the battery switch, and then it will be ready for use.



If you encounter any difficulties during the battery replacement process, it is recommended to refer to the user manual for your outboard motor and seek help from a professional technician.

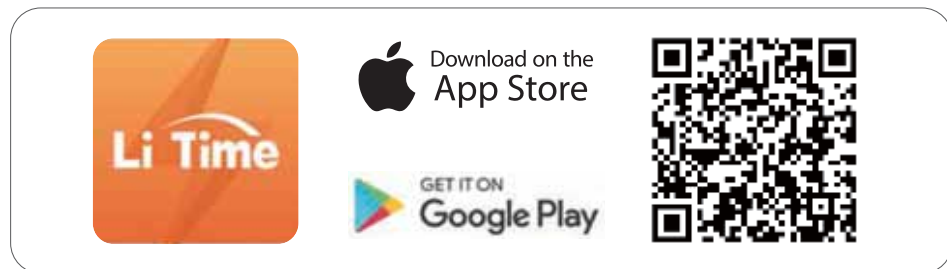
Please remember to dispose of the old batteries properly, following local regulations and environmental guidelines.

24/7 MONITORING VIA LITIME APP

The LiTime 36V 100Ah Smart Outboard Motor LiFePO4 battery, integrated with Bluetooth 5.0, enables accurate and effortless real-time tracking and management of the battery status.

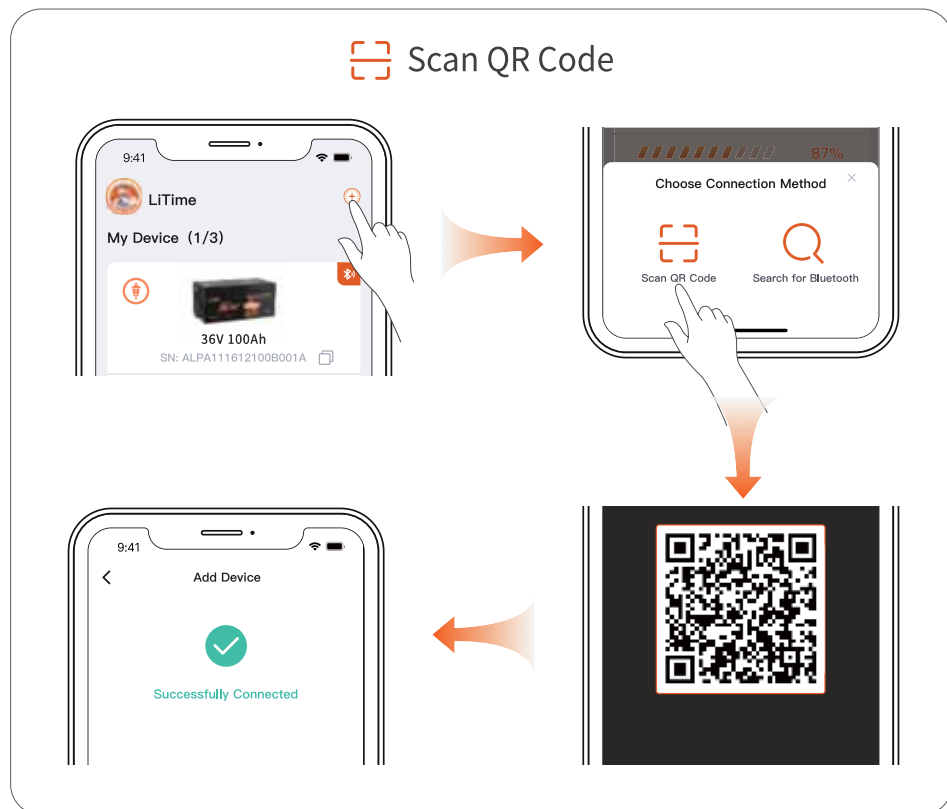
Step
1

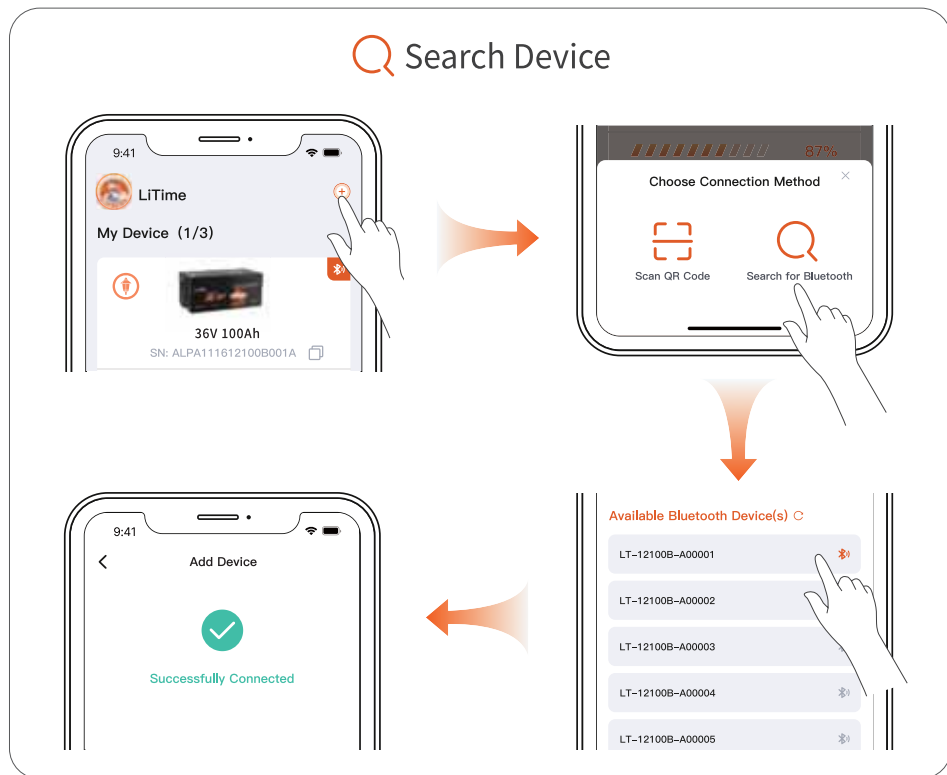
Download the LiTime APP and register your account.



Step
2

Pair the battery with the LiTime APP and effortlessly keep track of the battery's real-time status.





FCC STATEMENT

This device complies with Part 15 of the FCC Rules. Operation is subject to the following two conditions:

- This device may not cause harmful interference.
- This device must accept any interference received, including interference that may cause undesired operation.

This device has been tested and found to comply with the limits for a Class B digital device, pursuant to Part 15 of the FCC Rules. These limits are designed to provide reasonable protection against harmful interference in a residential installation. This device generates, uses, and can radiate radio frequency energy and, if not installed and used in accordance with the instructions, may cause harmful interference to radio communications. However, there is no guarantee that interference will not occur in a particular installation. If this device does cause harmful interference to radio or television reception, which can be determined by turning the equipment off and on, the user is encouraged to try to correct the interference by one or more of the following measures:

- Orient or relocate the receiving antenna.
- Increase the separation between the equipment and receiver.
- Connect the equipment into an outlet on a circuit different from that to which the receiver is connected.
- Consult the dealer or an experienced radio/TV technician for help.

Caution: Any changes or modifications to this device not explicitly approved by manufacturer could void your authority to operate this equipment.

This equipment complies with FCC radiation exposure limits set forth for an uncontrolled environment. This equipment should be installed and operated with minimum distance 20cm between the radiator and your body.

IMPORTANT SAFETY INSTRUCTION

■ Please keep the battery away from heat sources, sparks, flames, and hazardous chemicals.

■ Secure the battery during installation when used in outboard motors to avoid damage from shaking.

■ Maintain Adequate Ventilation and Heat Dissipation

Place the battery in a well-ventilated area with sufficient heat dissipation to prevent overheating and damage.

■ Size the Battery Cables and Connectors Appropriately

Use high-stranded copper connectors and heavy gauge cables to handle possible battery loads. Make sure to keep identical cable lengths. Avoid accidents caused by unsuitable connectors or cables that make the connection a heat source during battery operation.

■ Please tighten all cable connections, as loose cable connections can cause terminal meltdown or fire.

■ DO NOT puncture, drop, crush, burn, penetrate, shake, or strike the battery.

The battery should be securely fastened during handling to prevent impact or dropping.

It should be safely secured to a solid plane and the cables safely tied to a suitable location to avoid arcing and sparking due to friction.

DO NOT press it by placing heavy stuff on top of it for long periods, which may damage it due to an internal short circuit.

■ DO NOT immerse the battery in water whether the battery is in use or on standby.

■ DO NOT open, dismantle, or modify the battery.

■ DO NOT touch the exposed electrolyte or powder if the battery casing is damaged.

■ Uncovered electrolyte or powder that has contacted the skin or eyes MUST be flushed out with plenty of clean water immediately. Seek medical attention afterward.

■ Avoid Short Circuit

Please use circuit breakers, fuses, or disconnects that have been properly sized by certified electricians, licensed installers, or regional code authorities to protect all the electrical equipment in your system. The battery has a built-in battery management system (BMS) that protects the battery

cells from over-charge, over-discharge, and over-current, however this alone will not protect your system from severe electrical conditions.

Trained and certified technicians are required for safe and reliable installation. This product manual can only serve as a guideline as it cannot cover all possible scenarios.

Verify Correct Polarity

Please verify the polarity before connecting the wiring. Reverse polarity can and will destroy the battery and other electrical equipment. Use a multimeter to determine proper polarity.

Avoid Exposed Metal Terminals or Connectors

The terminals of this battery are always live. Avoid exposed metal terminals or connectors; DO NOT place tools on the terminals or touch them with bare hands; DO NOT short circuit or use outside of specified electrical ratings.

DO NOT dispose of the battery as household waste. Please use recycling channels in accordance with local, state, and federal regulations.

WARNING

Batteries are potentially dangerous and proper precautions must be taken during operation and maintenance.

Improper use of the battery can lead to battery failure or other potential damage.

Improper configuration, installation, or use of related equipment in the battery system may damage the battery and other related equipment.

Please wear proper personal protective equipment when working on the battery.

Battery installation and maintenance must be performed by trained and certified technicians.

Failure to follow the warnings above can result in potential damage.

If you have any questions or need any help, please feel free to contact us (and leave your contact phone number) at service@litime.com, we will offer phone or email support in 12hrs.

BATTERY-PACK MAIN PARAMETERS

Cell Type	LiFePO4
Nominal Voltage	38.4V
Rated Capacity	100Ah
Energy	3840Wh
Internal Resistance	$\leq 40\text{m}\Omega$
Cycle Life	≥ 4000 times
Battery Management System (BMS) Board	100A
Charge Method	CC/CV
Charge Voltage	$43.2\text{V} \pm 0.6\text{V}$
Recommend Charge Current	20A (0.2C)
Max. Continuous Charge Current	100A
Max. Continuous Discharge Current	100A
Peak Discharge Current	500A@1 second
Max. Continuous Output Power	3840W

Max. Continuous Outboard Motor Horsepower	5hp ^①
Max. Expansion (Series & Parallel)	2S4P
Dimension	L20.47*W10.59*H8.66 inch
	L520*W269*H220 mm
Housing Material	ABS (Flame Retardant Plastic)
Recommended Terminal Torque	106.2 to 123.9 inch · lbs / 12 to 14 N · m
Protection Class	IP65
Temperature Range	Charge: 0°C to 50°C / 32°F to 122°F
	Discharge: -20°C to 60°C / -4°F to 140°F
	Storage: -10°C to 50°C / 14°F to 122°F
Low Temperature Charging Protection (LTCP) Function ^②	Yes
Resume Charging Temperature Under LTCP	5°C/41°F (Battery Temperature)
FCC ID	2BDSV-36100

① One 36V 100Ah Smart Outboard Motor battery with Bluetooth is suitable for 36V outboard motors up to 5hp, 3840W; 2* identical batteries in series for 72V outboard motors up to 10hp, 7680W.

② The 36V 100Ah Smart Outboard Motor battery with Bluetooth supports Low Temperature Charging Protection (LTCP), where the BMS stops battery charging when the battery temperature falls below 0°C/32°F and resumes charging when the temperature rises above 5°C/41°F.

THINGS TO KNOW BEFORE USING

When using the battery, please be careful to **avoid metal or conductive objects touching the positive and negative poles of the battery at the same time**, otherwise it may cause a short circuit.

Install the battery upright with post bolt facing up, and it could not be mounted upside down. If you need to mount the battery at its side, please contact service@litime.com to confirm the direction.

Tightly screw in the post bolts. Having loose battery terminals will cause the terminals to build up heat resulting in damage to the battery.

This battery is not intended to be used to start any devices, please **DO NOT use it as a starting battery**.

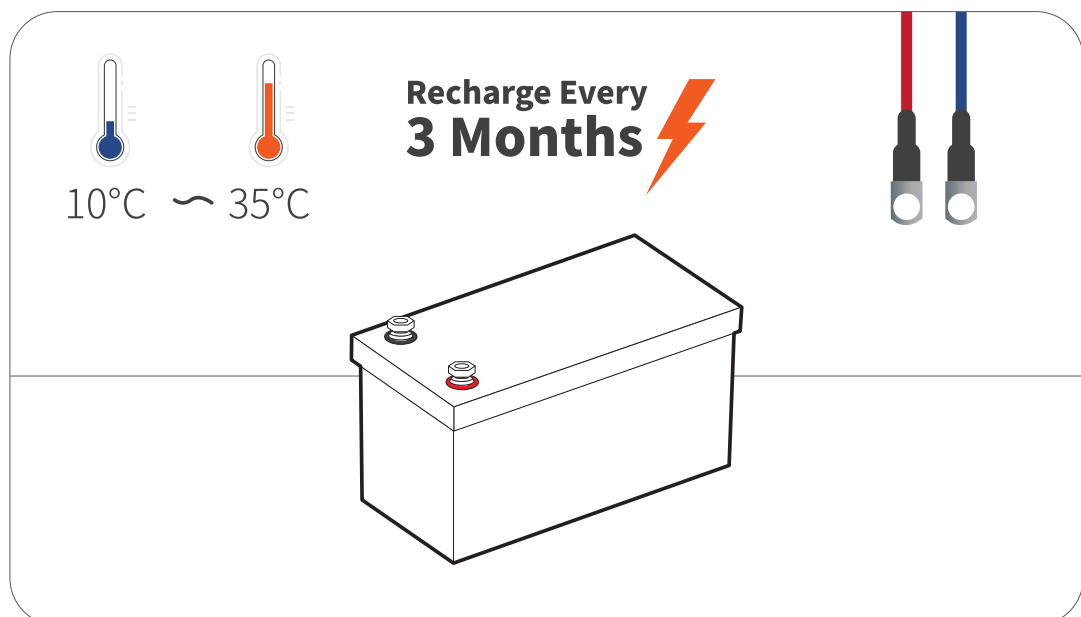
Suggestions for **Long-term Storage**:

○ Temperature

The battery can be operated at a temperature of -20°C to 60°C / -4°F to 140°F, and a temperature between [10°C to 35°C / 50°F to 95°F](#) is ideal for long-term storage. Store in a fireproof container and away from children.

○ Capacity

For a longer-lasting product, it is best to store your battery [at a 50% charge level](#) and recharge every three months if it is not going to be used for a long time.



CHARGING METHODS

SOLAR PANEL(S) & CONTROLLER

Solar Panel

☆ Recommend Power: $\geq 1200W$

- The battery can be fully charged in one day (with effective sunshine 4.5hrs/day) by 1200W solar panels.
- It may take more than one day to fully charge the battery by $\geq 1200W$ solar panels since the duration and intensity of light would be a great factor for their charging efficiency.

Controller

☆ Recommend Charging Current:

20A (0.2C)	The battery will be fully charged in around 5hrs to 100% capacity.
50A (0.5C)	The battery will be fully charged in around 2hrs to around 97% capacity.

☆ Recommend Charging Mode: **36V (43.8V) LI (LiFePO4)**

Controller Settings

Refer to the below parameters if you need to manually set up your controller. As different types of batteries have different charging modes, it is recommended to set only the following parameters for LiFePO4 batteries. The settings for other types of batteries do not apply to LiFePO4 batteries except for the following settings.

CHARGING	Charge /Bulk /Boost Voltage	43.2V \pm 0.6V
	Absorption Voltage	43.2V \pm 0.6V
	Over Voltage Disconnect	45V
	Over Voltage Reconnect	42.6V
	Tail Current	2A (0.02C)
DIS-CHARGING	Under Voltage Warning	34.8V
	Under Voltage Recover	36V
	Low Voltage Disconnect	32.4V
	Low Voltage Reconnect	37.2V

BATTERY CHARGER

Use 43.8V lithium iron phosphate (LiFePO₄) battery charger to maximize the capacity.

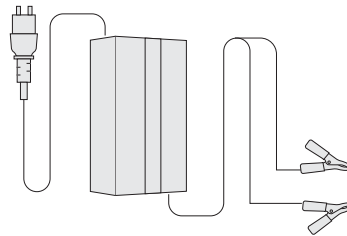
☆ Recommend Charging Voltage: Between 42.6V to 43.8V

☆ Recommend Charging Current:

20A (0.2C)	The battery will be fully charged in around 5hrs to 100% capacity.
50A (0.5C)	The battery will be fully charged in around 2hrs to around 97% capacity.

Tips

- ① Connect the charger (with alligator clips) to the grid power before connecting it to the battery in case of sparks.
- ② It's recommended to disconnect the charger from the battery after fully charging.



ALTERNATOR / GENERATOR

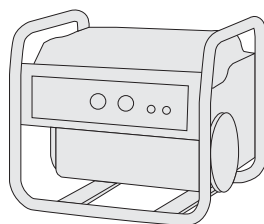
LiTime battery can be charged by an alternator or generator.

If the alternator/generator **supports AC output**, refer to the recommendations in "Battery Charger" above to add a **suitable battery charger** between the battery and the generator.

☆ Recommend Charging Voltage: Between 42.6V to 43.8V

☆ Recommend Charging Current:

20A (0.2C)	The battery will be fully charged in around 5hrs to 100% capacity.
50A (0.5C)	The battery will be fully charged in around 2hrs to around 97% capacity.



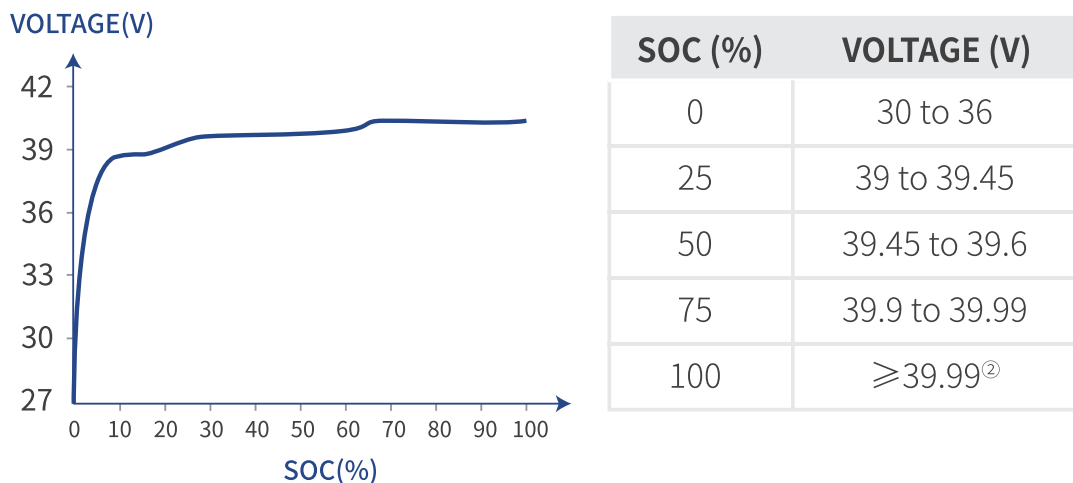
HOW TO ESTIMATE THE BATTERY CAPACITY

STATE OF CHARGE (SOC)

The battery capacity could be roughly estimated by its resting voltage (not charging/discharging voltage).^①

Since the voltage of each battery is slightly different, and the voltage measurement is affected by the measuring instrument, ambient temperature, etc., the following parameters are for reference only. The actual SOC of the battery is based on the discharge capacity under load.

Resting Voltage: The voltage is measured after the battery has been disconnected from the charger and loads with zero current, and left alone for 3 hours.



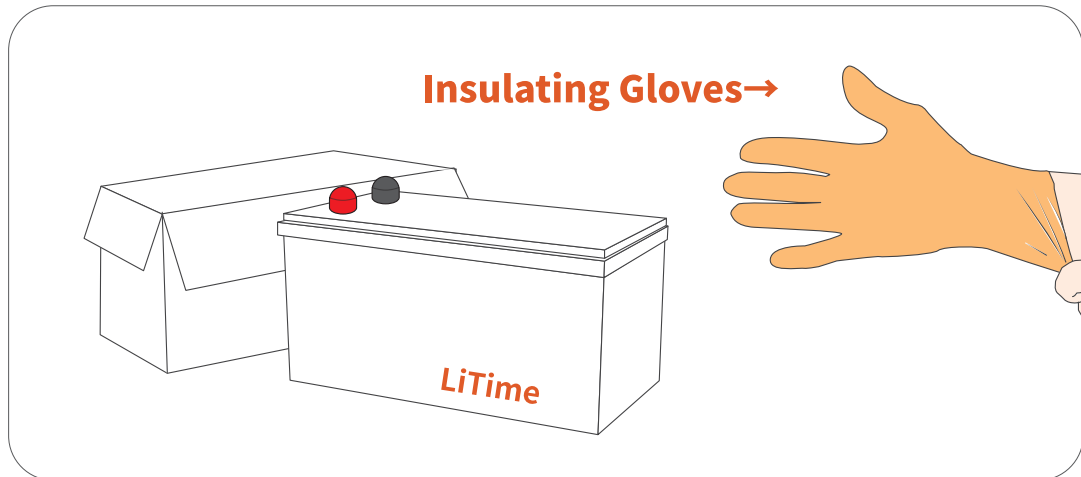
① Based on the characteristics of LiFePO₄ batteries, the voltage measured by all LiFePO₄ batteries during charging/discharging is not the real voltage of the battery. Therefore, after charging/discharging and disconnecting the battery from the power source, the voltage of the battery will gradually drop/increase to its real voltage.

② After this battery is protected from overcharge, the tested battery voltage (not the real voltage) will be lower than the real voltage. To calculate the SOC (%), add 0.5V to 0.7V to the tested battery voltage.

HOW TO CONNECT BATTERIES

Step1 Wear Insulating Gloves

Wear insulating gloves for protection before connecting. Please pay attention to operation safety in the process of connection.

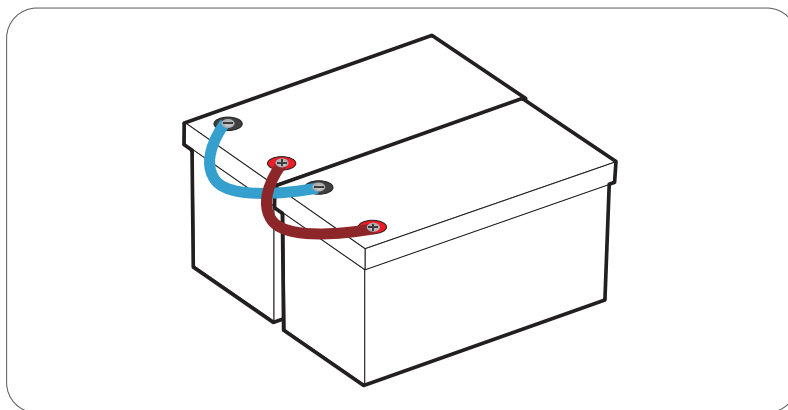


Step2 Voltage Balancing Before Connection

Below two steps are necessary to reduce the voltage difference between batteries and let the battery system perform the best of it in series or/ and in parallel.

Step **1** Fully charge the batteries separately.
(voltage at rest: $\geq 39.99V$)

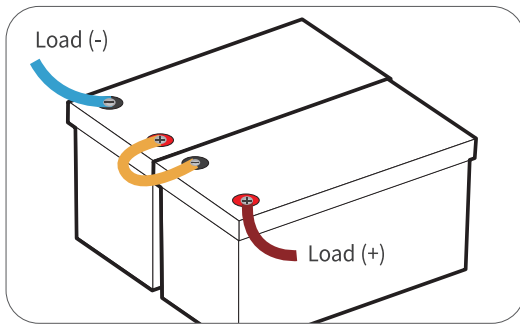
Step **2** Connect all of the batteries in parallel, and leave them together for 12~24hrs.



Step **3** They' re now ready for the connection.

Step3 Battery-to-Battery Connection

○ #1 Connect Batteries in Series **+** to **-**

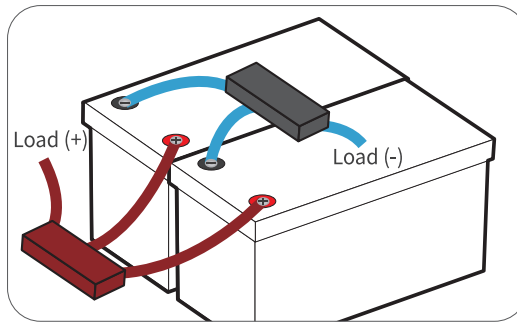


After series connection, the **voltage** of the battery system will be doubled according to the number of batteries you connect.

E.g. If two 36V 100Ah batteries are connected in series, the battery system will be 72V (76.8V) 100Ah.

○ #2 Connect Batteries in Parallel **+** to **+** **-** to **-**

Refer to Page 11 for total input & output connection



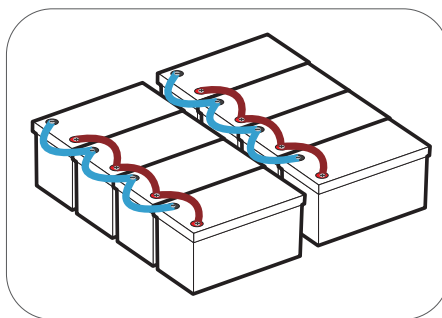
After parallel connection, the **capacity** of the battery system will be doubled according to the number of batteries you connect.

E.g. If two 36V 100Ah batteries are connected in parallel, the battery system will be 36V (38.4V) 200Ah.

○ #3 Connect Batteries Both in Series & Parallel

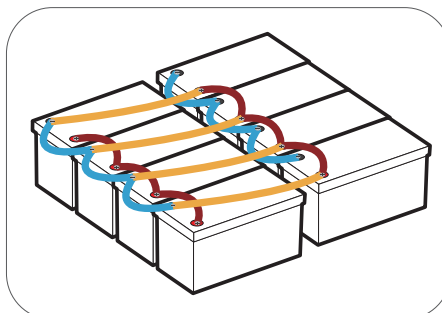
Connect in parallel first, then series.

Step
1



Connect the batteries in **parallel**.

Step
2

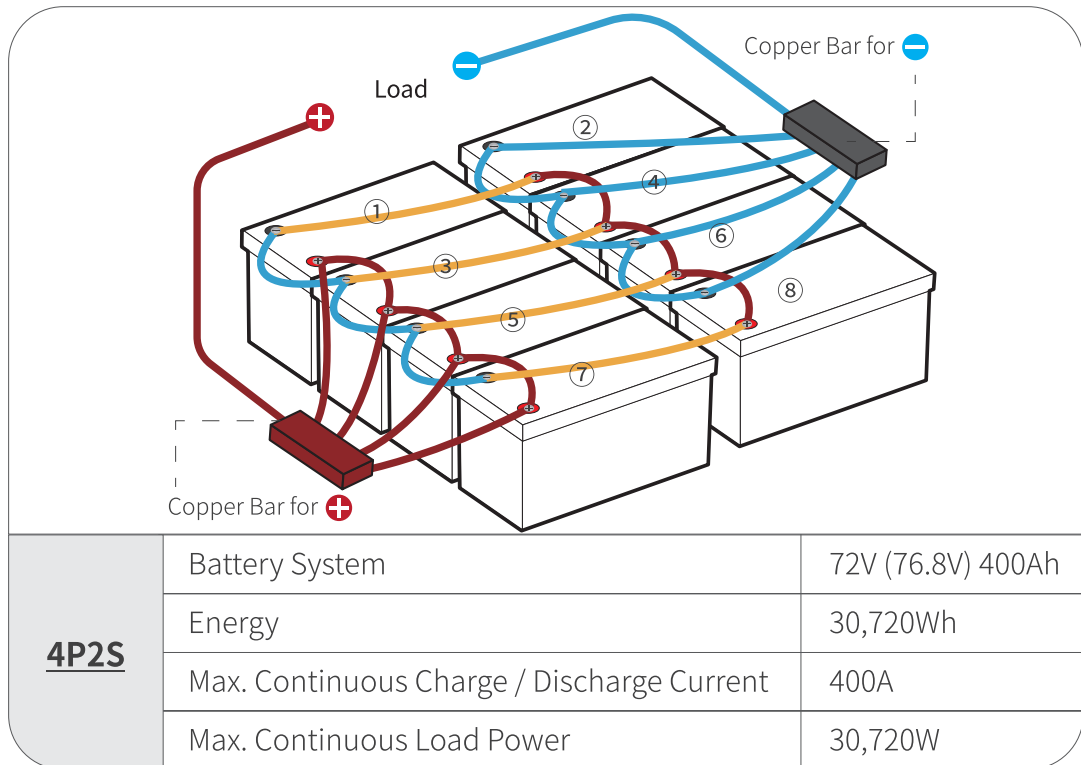


Connect the paralleled battery systems in **series**.

Step 4 Total Input & Output Connection

Use two **copper bars** (instead of battery terminals) to connect all the positive and negative output/input cables, ensuring that the input & output currents of each battery are balanced. (Not required when connecting batteries only in series.)

It is not recommended to use one terminal as the total positive or negative output/input of the battery system as the connected terminals may heat up or even melt if the total output/input current of the battery system is too high.



① As **⊖** of ① / ③ / ⑤ / ⑦ is connected in series with **⊕** of ② / ④ / ⑥ / ⑧, please do not connect **⊖** of ① / ③ / ⑤ / ⑦ with **⊖** of load or **⊕** of ② / ④ / ⑥ / ⑧ with **⊕** of load, otherwise the battery system will fail to connect in series.

② Please do not connect in reverse order, which may affect the use of the batteries.

Step 5 Rebalancing Every 6 Months

It is recommended to rebalance the battery voltage every six months following Step 2 on Page 10 if you're connecting multiple batteries as a battery system, as there might be voltage differences after six months of the battery system running.

