

Li Time

Originate from Ampere Time

LiFePO4

24V 100Ah

Smart 
BLUETOOTH 5.0

PRODUCT (100A BMS) MANUAL

Lithium Iron Phosphate Battery(LiFePO4)

www.litime.com



 service@litime.com

 service.de@litime.com



PRODUCT OVERVIEW

25.6V 100AH BATTERY

Operating Voltage: 25.6V

Charging Voltage: $28.8 \pm 0.4V$

Recommend Charge Current: 20A (0.2C)

Max Continuous Discharge Current: 100A

Max. Continuous Output Power: 2560W



M8*1.25mm Negative Terminal

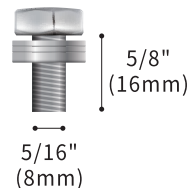
M8*1.25mm Positive Terminal



ADDITIONAL COMPONENTS

M8- 5/8" (16mm) Terminal Bolts

The terminal bolts are used to secure multiple cable lugs to a single battery terminal. The bolts can be replaced with M8 bolts of other lengths based on actual needs.



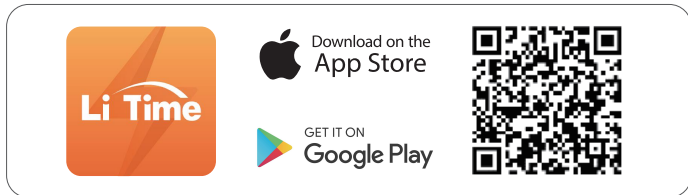
Insulating Caps for Bolts

24/7 MONITORING VIA LITIME APP

The LiTime 24V 100Ah Smart LiFePO4 battery, integrated with Bluetooth 5.0, enables accurate and effortless real-time tracking and management of the battery status.

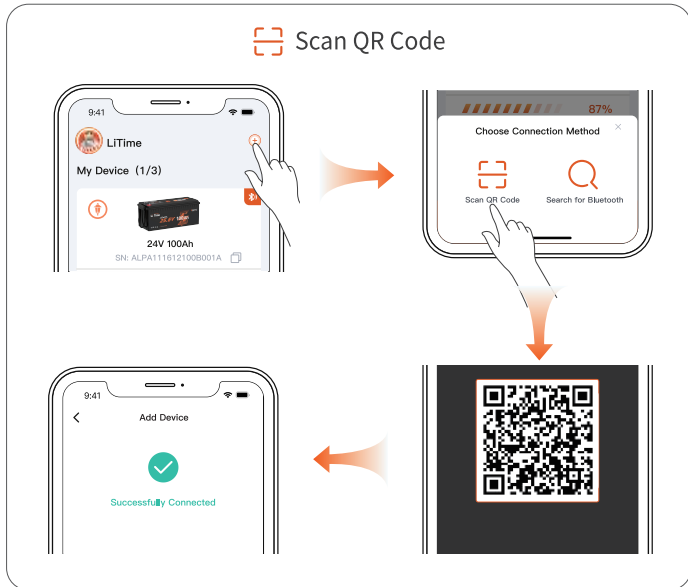
Step
1

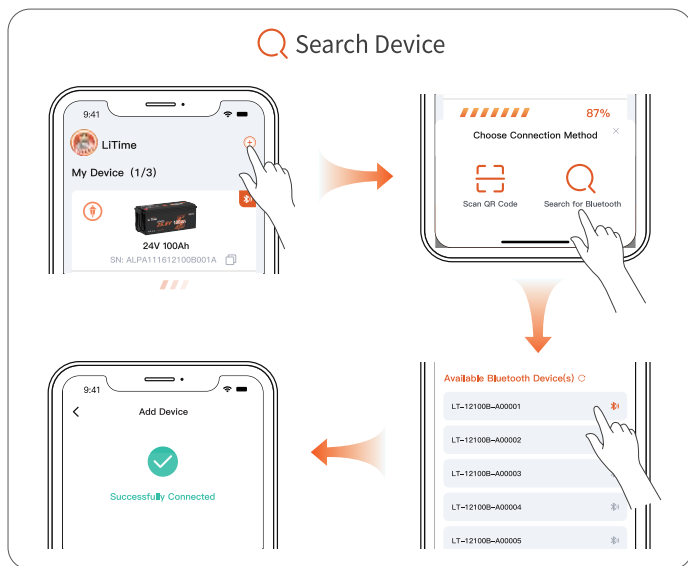
Download the LiTime APP and register your account.



Step
2

Pair the battery with the LiTime APP and effortlessly keep track of the battery's real-time status.





FCC STATEMENT

This device complies with Part 15 of the FCC Rules. Operation is subject to the following two conditions:

- This device may not cause harmful interference.
- This device must accept any interference received, including interference that may cause undesired operation.

This device has been tested and found to comply with the limits for a Class B digital device, pursuant to Part 15 of the FCC Rules. These limits are designed to provide reasonable protection against harmful interference in a residential installation. This device generates, uses, and can radiate radio frequency energy and, if not installed and used in accordance with the instructions, may cause harmful interference to radio communications. However, there is no guarantee that interference will not occur in a particular installation. If this device does cause harmful interference to radio or television reception, which can be determined by turning the equipment off and on, the user is encouraged to try to correct the interference by one or more of the following measures:

- Orient or relocate the receiving antenna.
- Increase the separation between the equipment and receiver.
- Connect the equipment into an outlet on a circuit different from that to which the receiver is connected.
- Consult the dealer or an experienced radio/TV technician for help.

Caution: Any changes or modifications to this device not explicitly approved by manufacturer could void your authority to operate this equipment.

This equipment complies with FCC radiation exposure limits set forth for an uncontrolled environment. This equipment should be installed and operated with minimum distance 20cm between the radiator and your body. This transmitter must not be co-located or operating in conjunction with any other antenna or transmitter.

IMPORTANT SAFETY INSTRUCTION

Please keep the battery away from heat sources, sparks, flames, and hazardous chemicals.

Maintain Adequate Ventilation and Heat Dissipation

Place the battery in a well-ventilated area with sufficient heat dissipation to prevent overheating and damage.

Size the Battery Cables and Connectors Appropriately

Use high-stranded copper connectors and heavy gauge cables to handle possible battery loads. Make sure to keep identical cable lengths. Avoid accidents caused by unsuitable connectors or cables that make the connection a heat source during battery operation.

Please tighten all cable connections, as loose cable connections can cause terminal meltdown or fire.

DO NOT puncture, drop, crush, burn, penetrate, shake, or strike the battery.

The battery should be securely fastened during handling to prevent impact or dropping.

It should be safely secured to a solid plane and the cables safely tied to a suitable location to avoid arcing and sparking due to friction.

DO NOT press it by placing heavy stuff on top of it for long periods, which may damage it due to an internal short circuit.

DO NOT immerse the battery in water whether the battery is in use or on standby.

DO NOT open, dismantle, or modify the battery.

DO NOT touch the exposed electrolyte or powder if the battery casing is damaged.

Uncovered electrolyte or powder that has contacted the skin or eyes MUST be flushed out with plenty of clean water immediately. Seek medical attention afterward.

Avoid Short Circuit

Please use circuit breakers, fuses, or disconnects that have been properly sized by certified electricians, licensed installers, or regional code authorities to protect all the electrical equipment in your system. The battery has a built-in battery management system (BMS) that protects the battery cells from over-charge, over-discharge, and over-current, however this alone will not protect your system from severe electrical conditions.

Trained and certified technicians are required for safe and reliable installation. This product manual can only serve as a guideline as it cannot cover all possible scenarios.

Verify Correct Polarity

Please verify the polarity before connecting the wiring. Reverse polarity can and will destroy the battery and other electrical equipment. Use a multimeter to determine proper polarity.

Avoid Exposed Metal Terminals or Connectors

The terminals of this battery are always live. Avoid exposed metal terminals or connectors; DO NOT place tools on the terminals or touch them with bare hands; DO NOT short circuit or use outside of specified electrical ratings.

DO NOT dispose of the battery as household waste. Please use recycling channels in accordance with local, state, and federal regulations.

WARNING

Batteries are potentially dangerous and proper precautions must be taken during operation and maintenance.

Improper use of the battery can lead to battery failure or other potential damage.

Improper configuration, installation, or use of related equipment in the battery system may damage the battery and other related equipment.

Please wear proper personal protective equipment when working on the battery.

Battery installation and maintenance must be performed by trained and certified technicians.

Failure to follow the warnings above can result in potential damage.

If you have any questions or need any help, please feel free to contact us (and leave your contact phone number) at service@litime.com, we will offer phone or email support in 12hrs.



CONTENTS

BATTERY PARAMETERS	page
	01

THINGS TO KNOW BEFORE USING	page
	03

Long Term Storage	03
-------------------	----

CHARGING METHODS	page
	04

Method I	Solar Panel(s) & Controller	04
	Solar Panel	
	Controller	
	Controller Settings	

Method II	Battery Charger	05
-----------	-----------------	----

Method III	Alternator / Generator	05
------------	------------------------	----

HOW TO ESTIMATE THE BATTERY CAPACITY	page
	06

State of Charge (SOC)	06
-----------------------	----

RECOMMENDED CABLE SIZING

page

07

SERIES / PARALLEL CONNECTION

page

08

The Premise of Connection

08

Limitation for Series/Parallel Connection

08

How to Connect Batteries

09

- Step 1 Wear Insulating Gloves
- Step 2 Voltage Balancing Before Connection
- Step 3 Battery-to-Battery Connection
- Step 4 Total Input & Output Connection
- Step 5 Rebalancing Every Six Months
- Wiring Diagram Reference

WHAT TO DO WHEN THE BATTERY STOPS WORKING?

page

13

BATTERY PARAMETERS

Cell	LiFePO4
Nominal Voltage	25.6V
Rated Capacity	100Ah
Energy	2560Wh
Internal Resistance	$\leq 40\text{m}\Omega$
Cycle Life	≥ 4000 times
Battery Management System (BMS) Board	100A
Charge Method	CC/CV
Charge Voltage	$28.8 \pm 0.4\text{V}$
Recommend Charge Current	20A (0.2C)
Max. Continuous Charge Current	100A
Max. Continuous Discharge Current	100A
Peak Discharge Current	500A@1 second
Max. Continuous Output Power	2560W

Dimension	L21*W8.2*H8.5 inch
	L532*W207*H215 mm
Housing Material	ABS (Flame Retardant Plastic)
Recommended Terminal Torque	106.2 to 123.9 inch · lbs / 12 to 14 N · m
Protection Class	IP65
Temperature Range	Charge: 0°C to 50°C / 32°F to 122°F
	Discharge: -20°C to 60°C / -4°F to 140°F
	Storage: -10°C to 50°C / 14°F to 122°F
Low Temperature Charging Protection (LTCP) Function ^①	Yes
Resume Charging Temperature Under LTCP	5°C/41°F (Battery Temperature)
FCC ID	2BDSV-24100

① The 24V 100Ah Smart battery with Bluetooth supports Low Temperature Charging Protection (LTCP), where the BMS stops battery charging when the battery temperature falls below 0°C/32°F and resumes charging when the temperature rises above 5°C/41°F.

THINGS TO KNOW BEFORE USING

When using the battery, please be careful to **avoid metal or conductive objects touching the positive and negative poles of the battery at the same time**, otherwise it may cause a short circuit.

Install the battery upright with post bolt facing up, and it could not be mounted upside down. If you need to mount the battery at its side, please contact service@litime.com to confirm the direction.

Tightly screw in the post bolts. Having loose battery terminals will cause the terminals to build up heat resulting in damage to the battery.

This battery is not intended to be used to start any devices, please **DO NOT use it as a starting battery**.

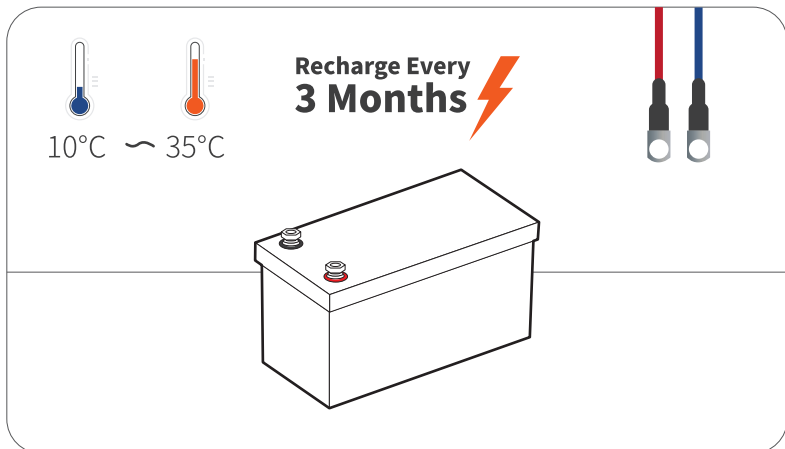
Suggestions for **Long-term Storage**:

○ Temperature

The battery can be operated at a temperature of -20°C to 60°C / -4°F to 140°F , and a temperature between [10°C to 35°C / 50°F to 95°F](#) is ideal for long-term storage. Store in a fireproof container and away from children.

○ Capacity

For a longer-lasting product, it is best to store your battery [at a 50% charge level](#) and recharge every three months if it is not going to be used for a long time.



CHARGING METHODS

SOLAR PANEL(S) & CONTROLLER

Solar Panel

☆ Recommend Power: $\geq 800W$

- The battery can be fully charged in one day (with effective sunshine 4.5hrs/day) by 800W solar panels.
- It may take more than one day to fully charge the battery by $\geq 800W$ solar panels since the duration and intensity of light would be a great factor for their charging efficiency.

Controller

☆ Recommend Charging Current:

20A (0.2C)	The battery will be fully charged in around 5hrs to 100% capacity.
50A (0.5C)	The battery will be fully charged in around 2hrs to around 97% capacity.

☆ Recommend Charging Mode: **24V (29.2V) LI (LiFePO4)**

Controller Settings

Refer to the below parameters if you need to manually set up your controller. As different types of batteries have different charging modes, it is recommended to set only the following parameters for LiFePO4 batteries. The settings for other types of batteries do not apply to LiFePO4 batteries except for the following settings.

CHARGING	Charge /Bulk /Boost Voltage	28.8 \pm 0.4V
	Absorption Voltage	28.8 \pm 0.4V
	Over Voltage Disconnect	30V
	Over Voltage Reconnect	28.4V
	Tail Current	2A (0.02C)
DIS-CHARGING	Under Voltage Warning	23.2V
	Under Voltage Recover	24V
	Low Voltage Disconnect	21.6V
	Low Voltage Reconnect	24.8V

BATTERY CHARGER

Use 29.2V lithium iron phosphate (LiFePO₄) battery charger to maximize the capacity.

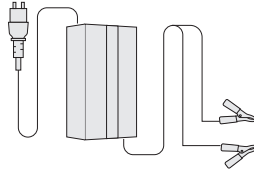
☆ Recommend Charging Voltage: Between 28.4V to 29.2V

☆ Recommend Charging Current:

20A (0.2C)	The battery will be fully charged in around 5hrs to 100% capacity.
50A (0.5C)	The battery will be fully charged in around 2hrs to around 97% capacity.

Tips

- ① Connect the charger (with alligator clips) to the grid power before connecting it to the battery in case of sparks.
- ② It's recommended to disconnect the charger from the battery after fully charging.



ALTERNATOR / GENERATOR

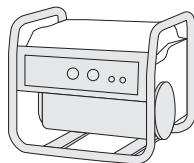
LiTime battery can be charged by an alternator or generator.

If the alternator/generator **supports DC output**, a **DC-to-DC charger** needs to be added between the battery and the generator; if the alternator/generator **supports AC output**, please refer to the recommendations in "Battery Charger" above to add a **suitable battery charger** between the battery and the generator.

☆ Recommend Charging Voltage: Between 28.4V to 29.2V

☆ Recommend Charging Current:

20A (0.2C)	The battery will be fully charged in around 5hrs to 100% capacity.
50A (0.5C)	The battery will be fully charged in around 2hrs to around 97% capacity.



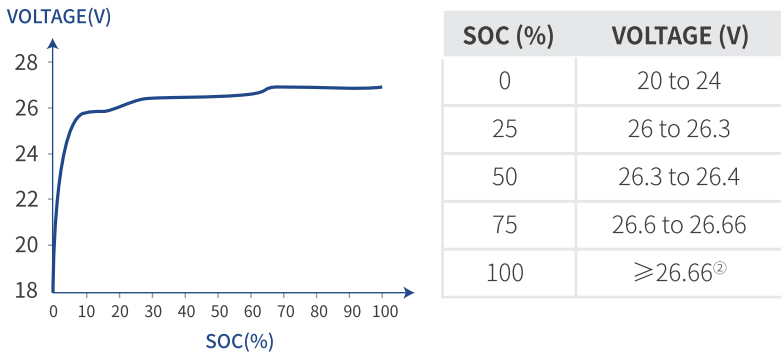
HOW TO ESTIMATE THE BATTERY CAPACITY

STATE OF CHARGE (SOC)

The battery capacity could be roughly estimated by its resting voltage (not charging/discharging voltage).^①

Since the voltage of each battery is slightly different, and the voltage measurement is affected by the measuring instrument, ambient temperature, etc., the following parameters are for reference only. The actual SOC of the battery is based on the discharge capacity under load.

Resting Voltage:The voltage is measured after the battery has been disconnected from the charger and loads with zero current, and left alone for 3 hours.



- ① Based on the characteristics of LiFePO₄ batteries, the voltage measured by all LiFePO₄ batteries during charging/discharging is not the real voltage of the battery. Therefore, after charging/discharging and disconnecting the battery from the power source, the voltage of the battery will gradually drop/increase to its real voltage.
- ② After this battery is protected from overcharge, the tested battery voltage (not the real voltage) will be lower than the real voltage. To calculate the SOC (%), add 0.5V to 0.7V to the tested battery voltage.