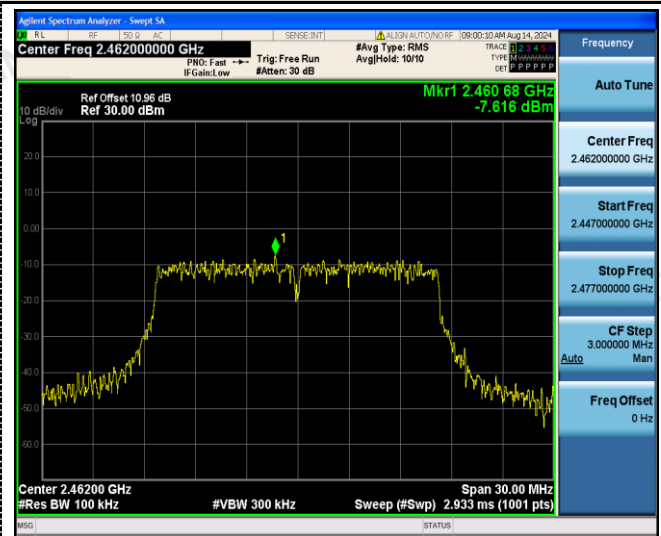
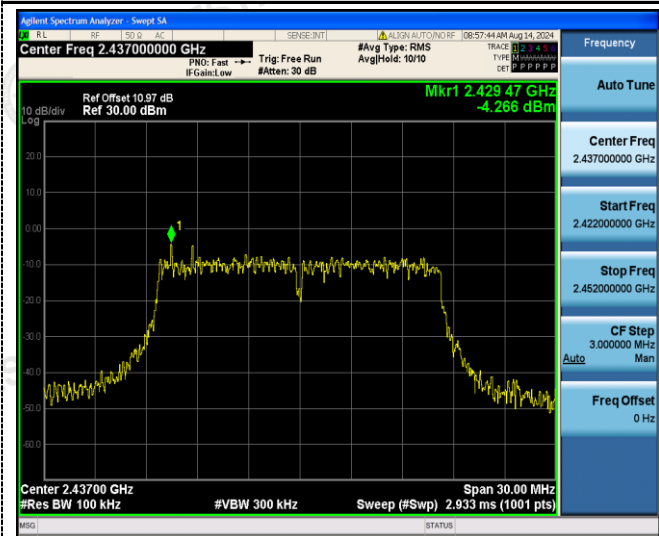
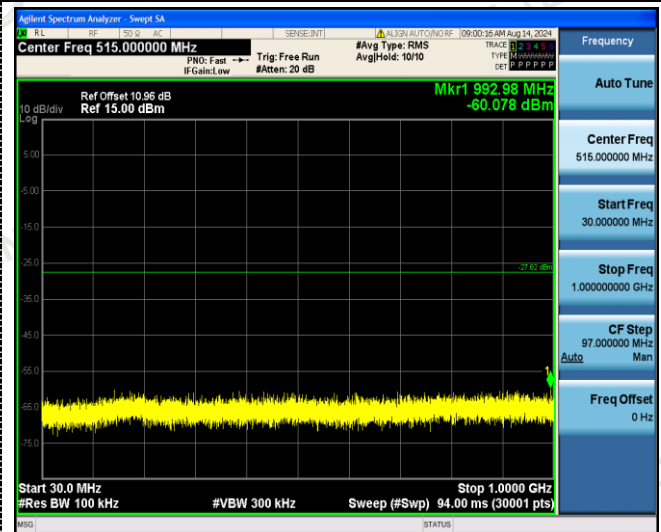
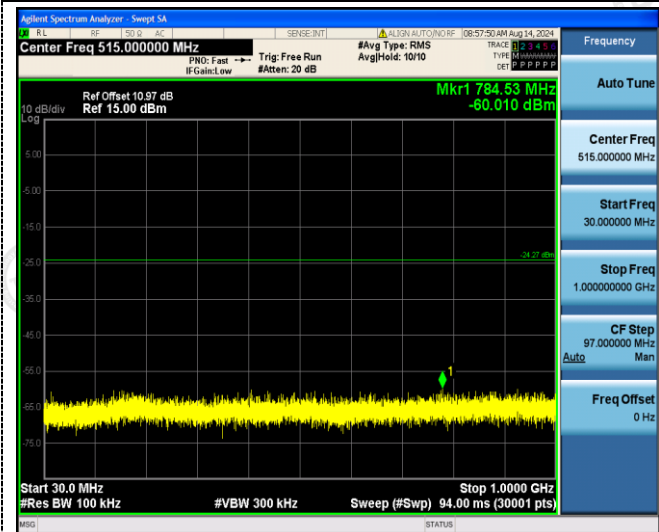


802.11g



Reference  
CH06

Reference  
CH11



30MHz-3GHz

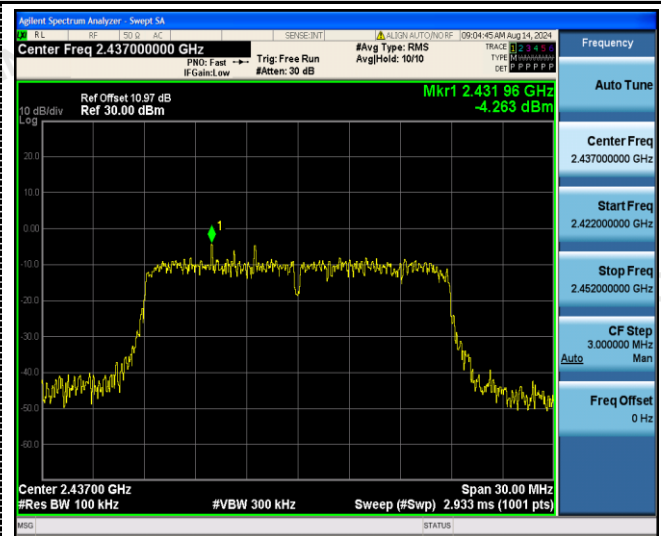
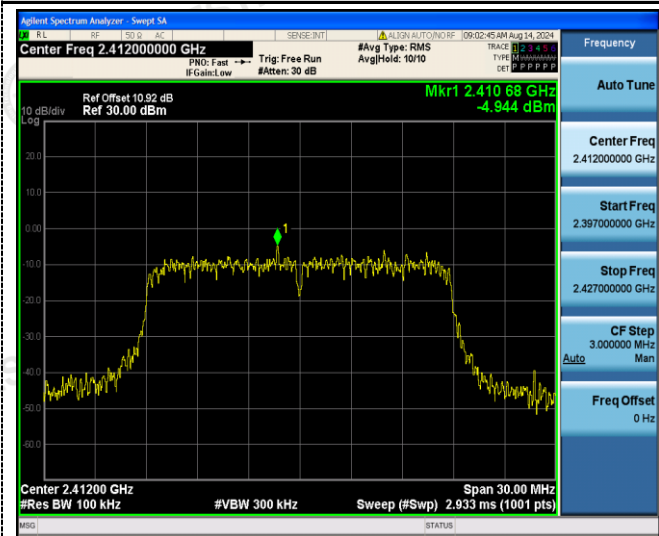
30MHz-3GHz



1GHz-25GHz

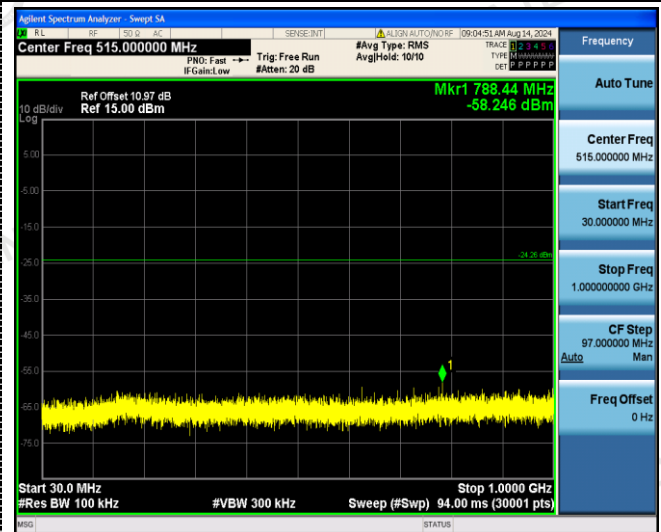
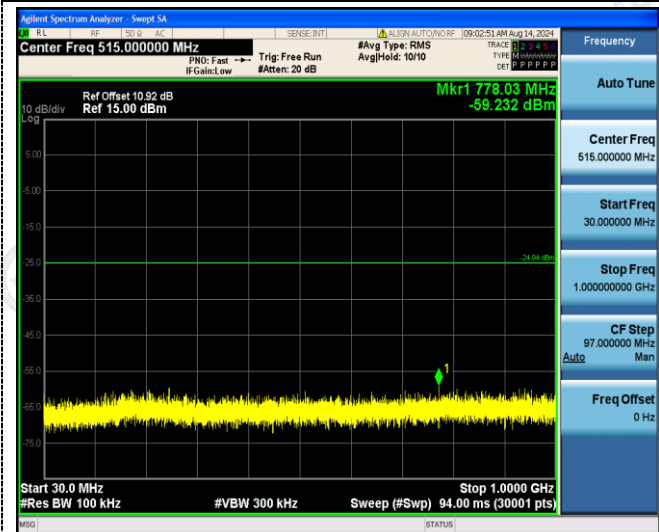
1GHz-25GHz

802.11n20



Reference  
CH01

Reference  
CH06



30MHz-3GHz

30MHz-3GHz



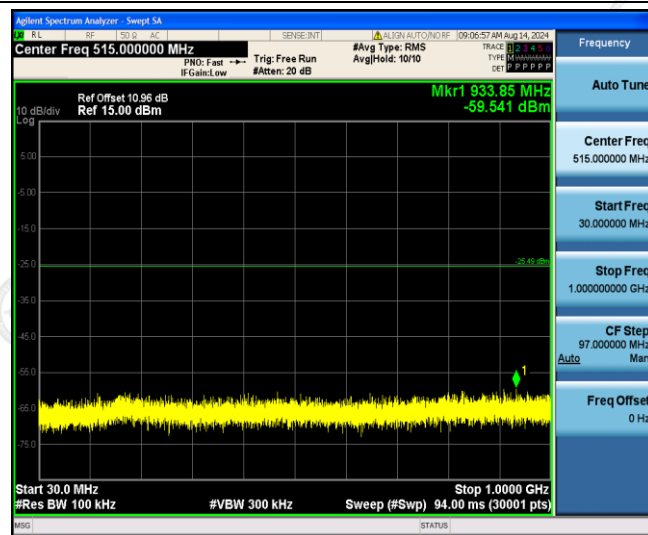
1GHz -25GHz

1GHz -25GHz

802.11n20



Reference  
CH11



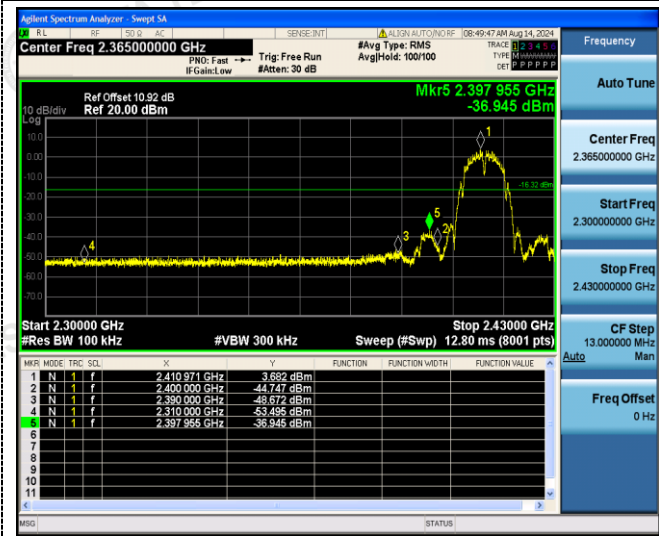
30MHz-3GHz



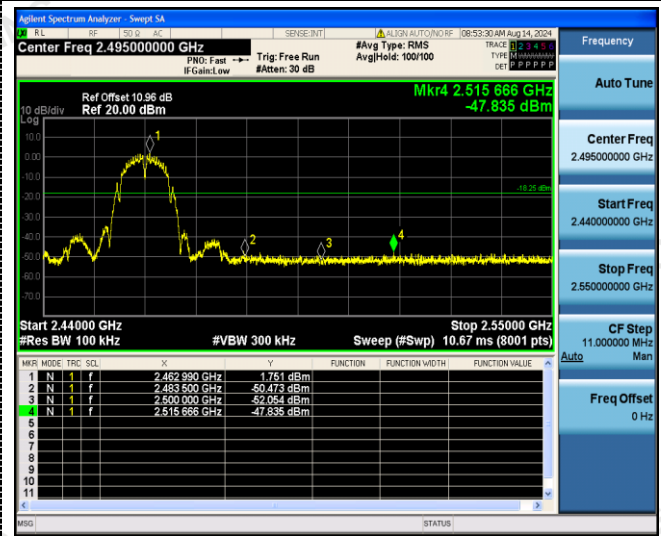
1GHz -25GHz

**Band-edge Measurements for RF Conducted Emissions:**

**802.11b**

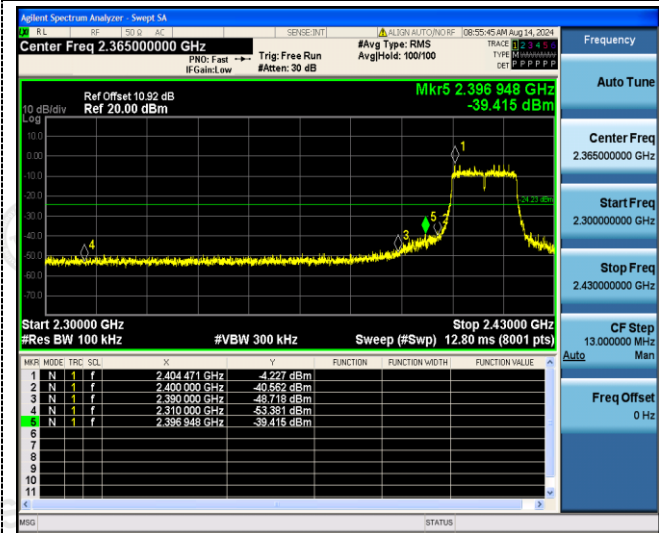


Left bandedge

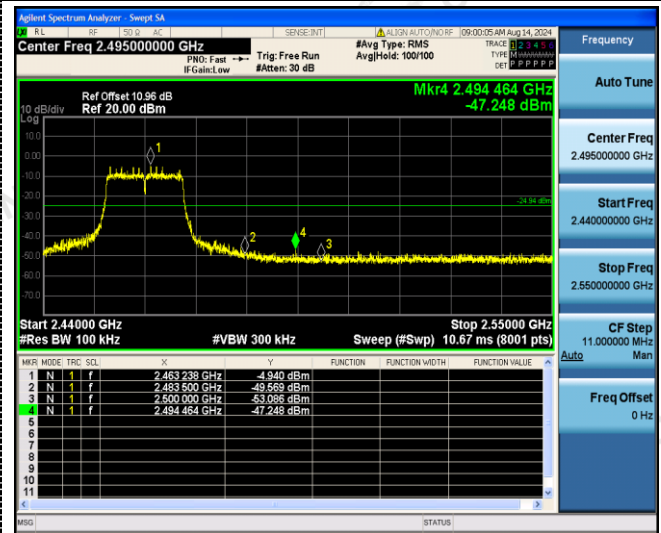


Right bandedge

**802.11g**

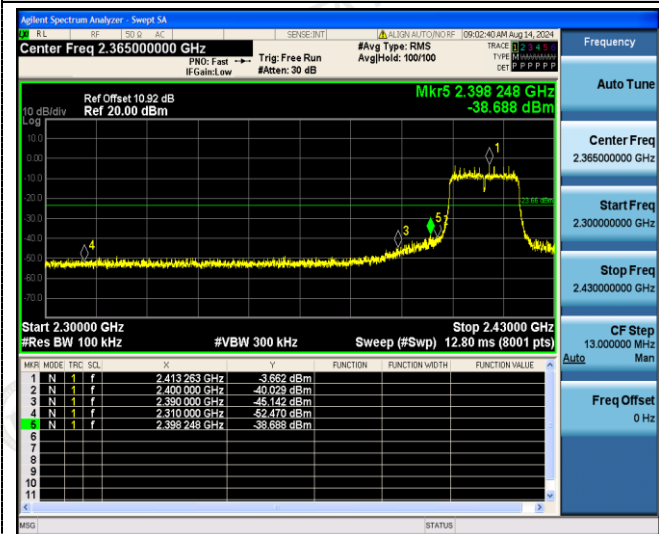


Left bandedge

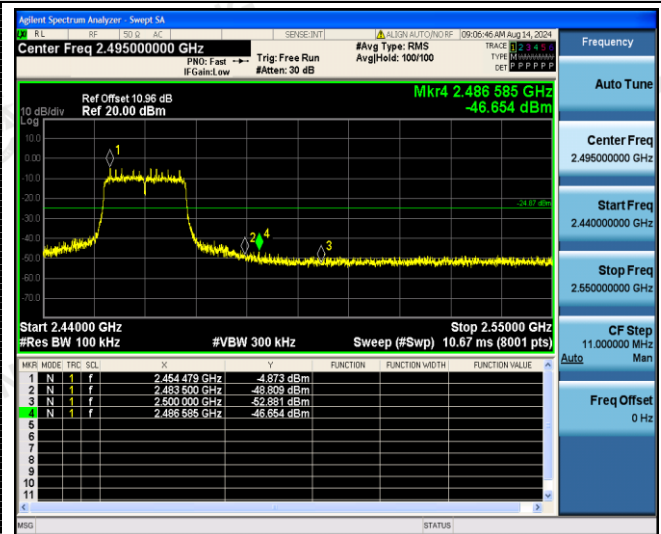


Right bandedge

**802.11n(HT20)**



Left bandedge



Right bandedge

## 4.7 Antenna Requirement

### Standard Applicable

**For intentional device, according to FCC 47 CFR Section 15.203:**

An intentional radiator shall be designed to ensure that no antenna other than that furnished by the responsible party shall be used with the device. The use of a permanently attached antenna or of an antenna that uses a unique coupling to the intentional radiator, the manufacturer may design the unit so that a broken antenna can be replaced by the user, but the use of a standard antenna jack or electrical connector is prohibited

**FCC CFR Title 47 Part 15 Subpart C Section 15.247(c) (1) (I):**

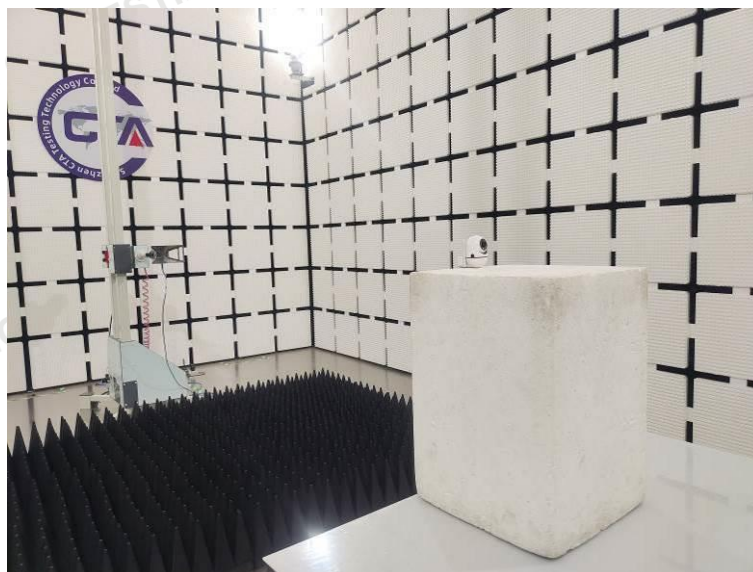
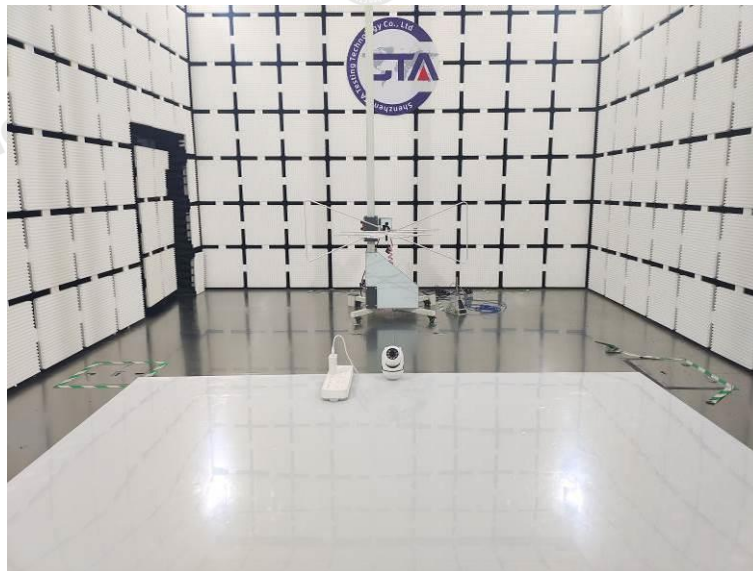
(i) Systems operating in the 2400-2483.5 MHz band that is used exclusively for fixed. Point-to-point operations may employ transmitting antennas with directional gain greater than 6dBi provided the maximum conducted output power of the intentional radiator is reduced by 1 dB for every 3 dB that the directional gain of the antenna exceeds 6dBi.

### Test Result:

The maximum gain of antenna was 0.92 dBi.

Remark: The antenna gain is provided by the customer, if the data provided by the customer is not accurate, Shenzhen CTA Testing Technology Co., Ltd. does not assume any responsibility.

## 5 Test Setup Photos of the EUT

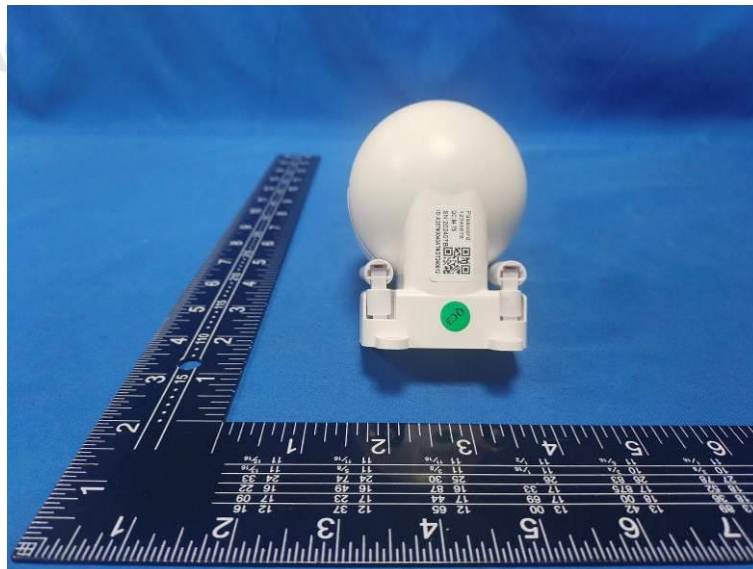


## 6 Photos of the EUT

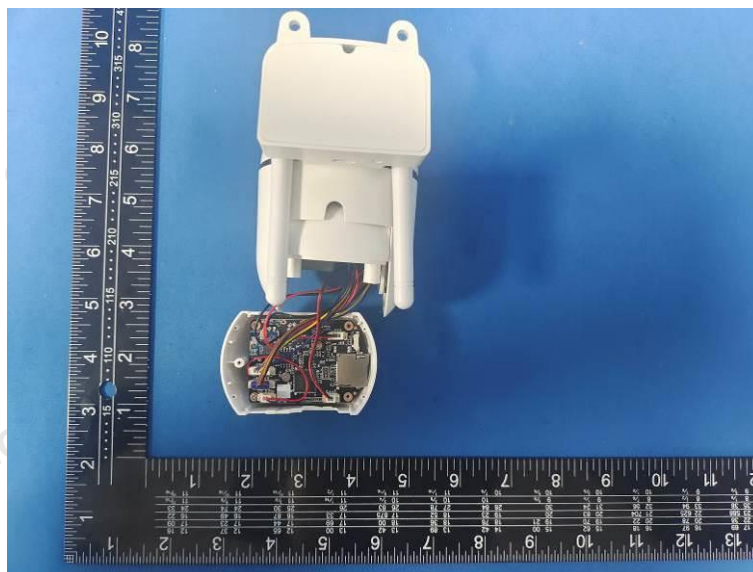
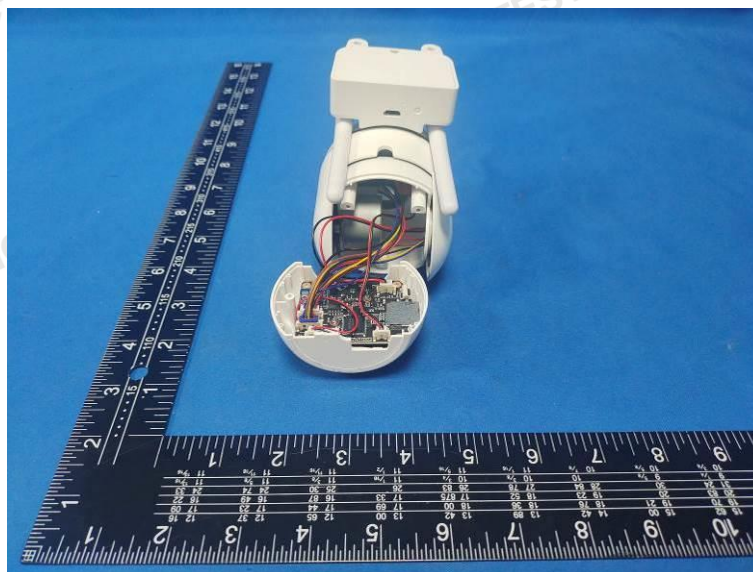


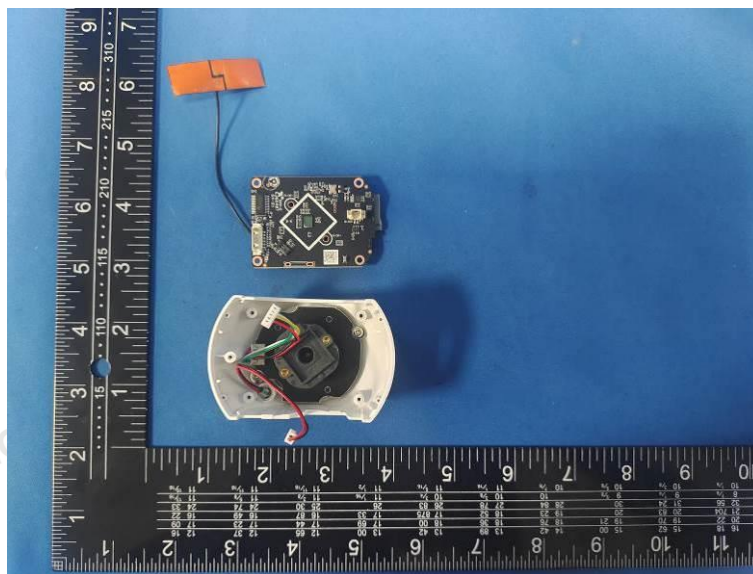
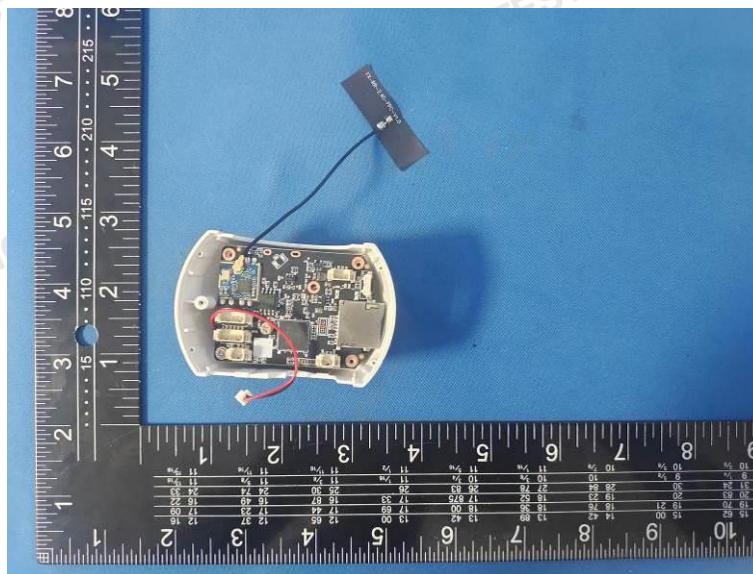
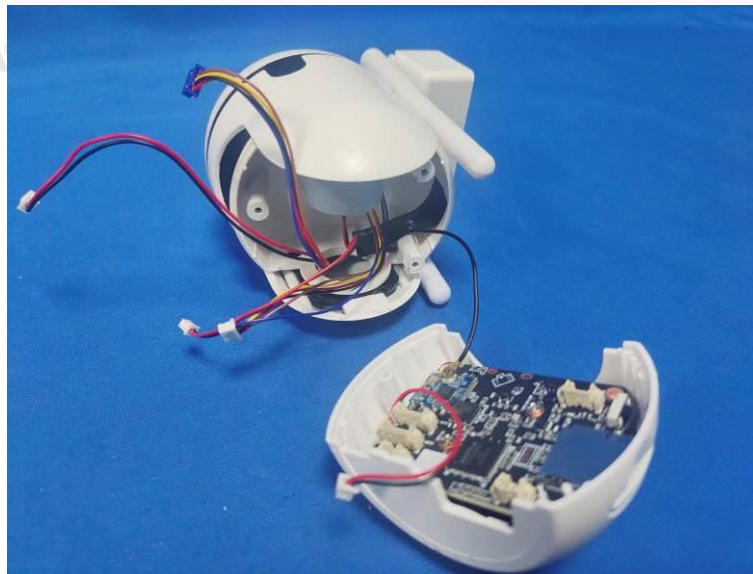
AK-3820, AK-3120SZ, AK-3120SZ-H, AK-1920, AK-A120,  
AK-3120SZ-WIFI, SQ-3120SZ-WIFI, AK-3120SZ-H-WIF

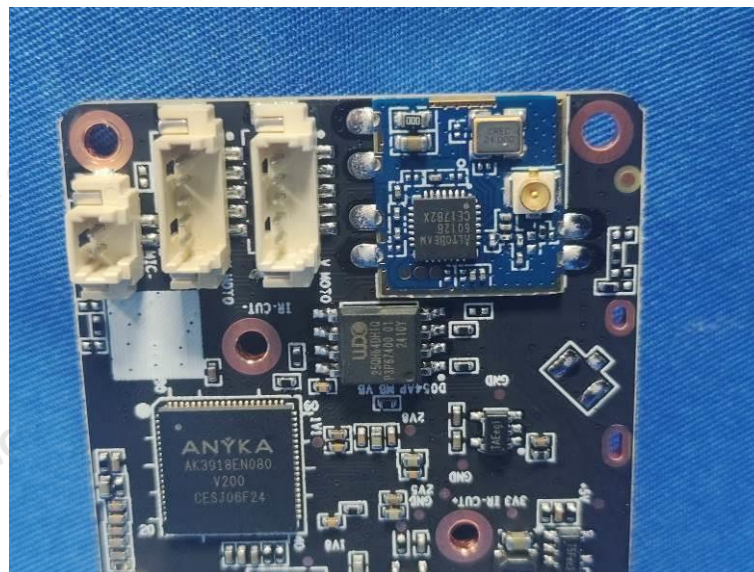
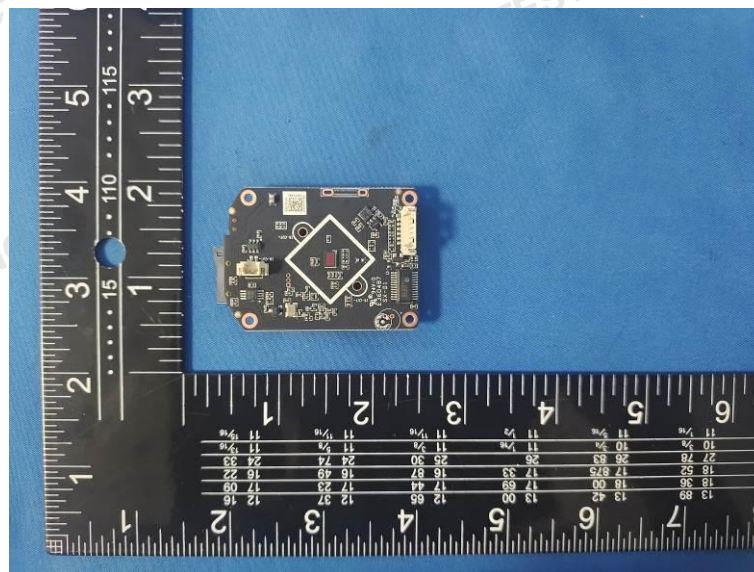
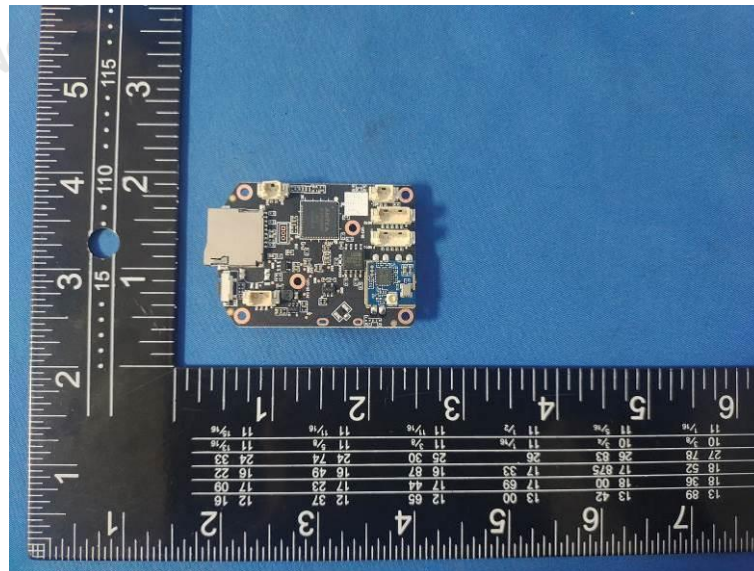


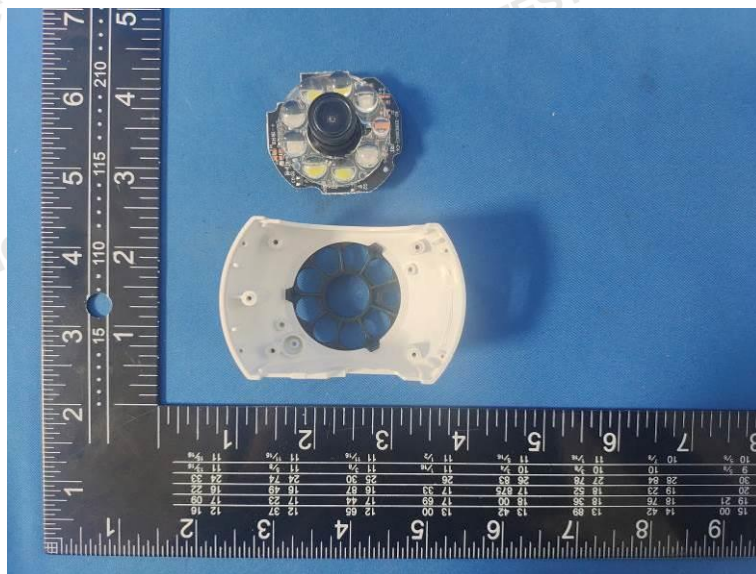
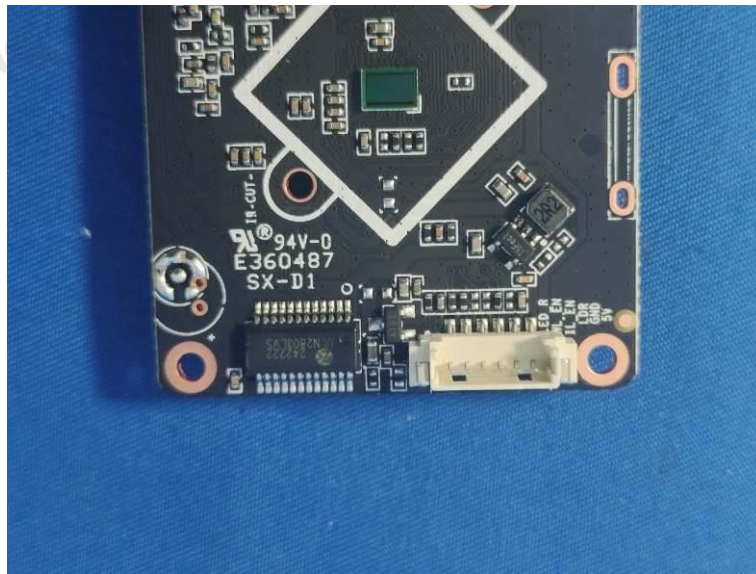


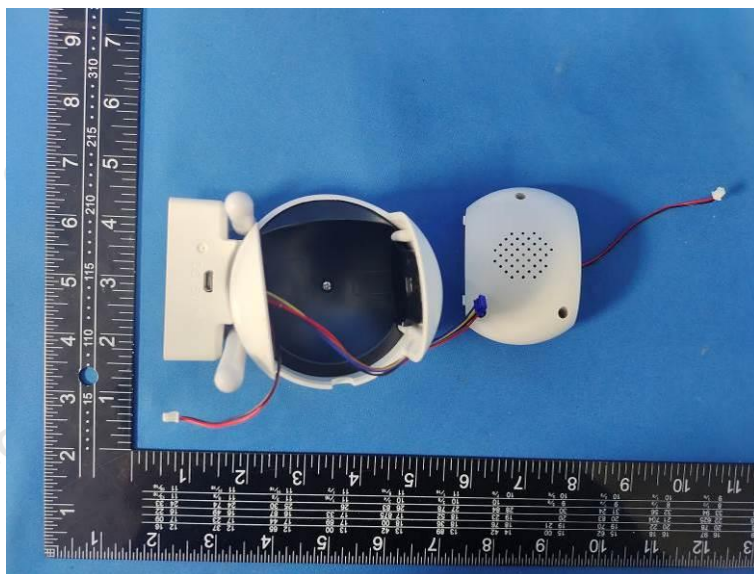
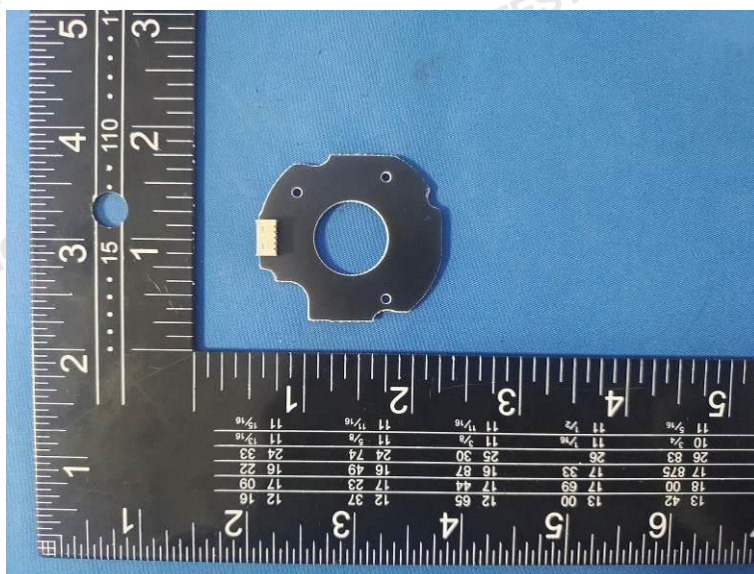
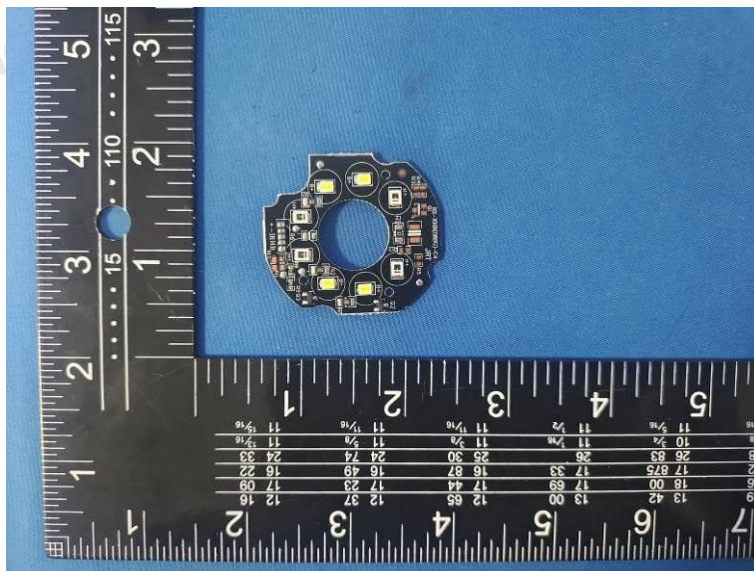


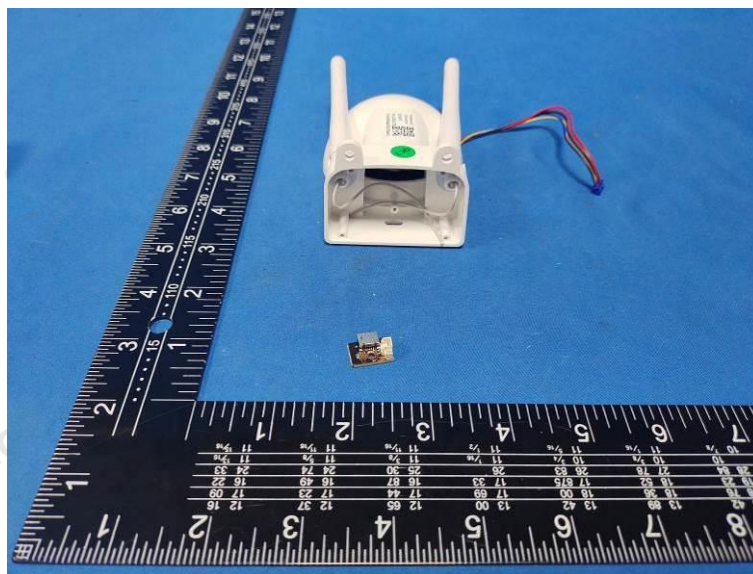
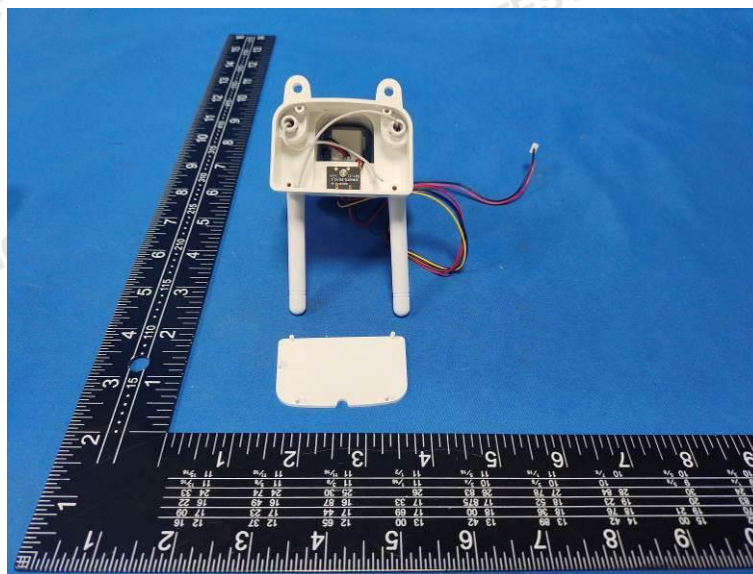


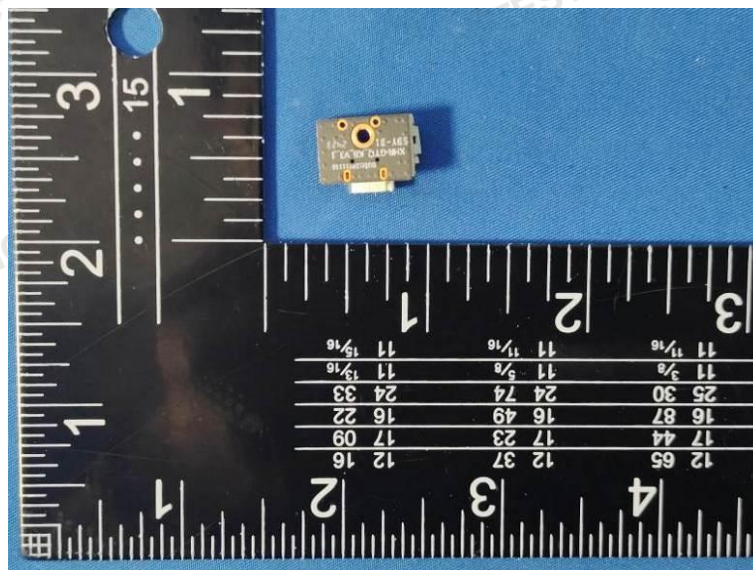
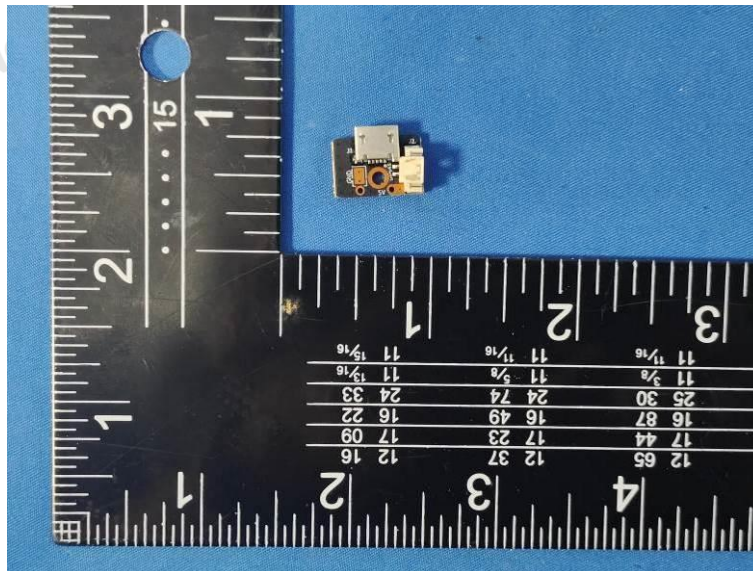












AK-3120S-DP, AK-3120S-DP-H, AK-3320S-DP,  
AK-3120S-DP-WIFI, SQ-3120S-DP-WIFI

