

UP-TECH®

RETRO

EMOJI WIRELESS KEYBOARD INSTRUCTION MANUAL

Distributed By: 1616 Holdings, Inc.
701 Market Street, Suite 200
Philadelphia, PA 19106
MADE IN CHINA



WARNING: TO AVOID BATTERY LEAKAGE

- 1) Requires 1(One) 1.5V AA Battery (Not included)
- 2) The batteries used with this product are small parts and should be kept away from small children who still put things in their mouths. If they are swallowed, promptly see a doctor and have the doctor phone American Association of Poison Control Centers (1-800-222-1222).
- 3) Always purchase the correct size and grade of battery most suitable for intended use.
- 4) Do not mix old and new batteries, alkaline, standard (Carbon-Zinc) or rechargeable (Nickel-cadmium) batteries.
- 5) Clean the battery contacts and those of the device prior to battery installation.
- 6) Ensure the batteries are installed correctly with the regard to polarity (+ and -)
- 7) Always remove batteries if consumed or if product is to be left unused for a long time.

WARNINGS

- This is not a toy keep away from children under 6 years of age.
- Keep away from heat and open flames.
- Do not attempt to disassemble or reassemble this device.
- This wireless keyboard have one USB receiver, the USB receiver put in the keyboard's battery place.
- Please do not used extension line and put USB receiver to the behind of computer USB port, that avoid affect the reception.
- Please pay attention to the anode and the cathode of the battery install.
- Generally, the keyboard will enter sleep after 10 second, 15 minutes will enter into deep sleep, but press any key can be awoken the keyboard.

FCC STATEMENT

1. This device complies with Part 15 of the FCC Rules. Operation is subject to the following two conditions: (1) This device may not cause harmful interference, and (2) This device must accept any interference received, including interference that may cause undesired operation.

FCC ID: 2BDOP-UPT-1448 (Wireless keyboard)
FCC ID: 2BDOP-UPT-1446 (Dongle)

IMPORTANT NOTE:

Note: This equipment has been tested and found to comply with the limits for a Class B digital device, pursuant to part 15 of the FCC Rules. These limits are designed to provide reasonable protection against harmful interference in a residential installation. This equipment generates, uses and can radiate radio frequency energy and, if not installed and used in accordance with the instructions, may cause harmful interference to radio communications. However, there is no guarantee that interference will not occur in a particular installation. If this equipment does cause harmful interference to radio or television reception, which can be determined by turning the equipment off and on, the user is encouraged to try to correct the interference by one or more of the following measures:

- Reorient or relocate the receiving antenna.
- Increase the separation between the equipment and receiver.
- Connect the equipment into an outlet on a circuit different from that to which the receiver is connected.
- Consult the dealer or an experienced radio/TV technician for help.

Any Changes or modifications not expressly approved by the party responsible for compliance could void the user's authority to operate the equipment.
This equipment complies with FCC radiation exposure limits set forth for an uncontrolled environment.

UP-TECH®

RETRO

BUILT-IN EMOJI SHORTCUT KEYS



EMOJI WIRELESS KEYBOARD INSTRUCTION MANUAL

INSTRUCTION MANUAL

Thank you for purchasing the UPTECH RETRO EMOJI Wireless Keyboard. This keyboard has been designed with long term computer use in mind, providing a smooth user experience with universal compatibility. Along with 4 fun preset emoji keys you can express yourself while replying on all the major social media site. Please take the time to go over the information provided even if you are familiar with a similar product.

SPECIFICATIONS:

- Material: ABS Plastic
- Type: Wireless keyboard
- Power Supply: 1 (One) 1.5V AA Alkaline Battery (not included)
- Interface: USB 2.0
- Connection: Wireless with USB receiver
- Keystroke life: 1 million times
- Key number: 86 Keys
- Dimensions: 12.32" x 1.27" x 5.55"
31.30cm x 3.23cm x 14.10cm

PACKAGE CONTENTS:

RETRO EMOJI Keyboard
Universal USB Receiver
Quick Start Guide

MINIMUM SYSTEM REQUIREMENTS:

PC or Mac with 1 USB 2.0 Port
Windows® 2000, Vista, 10, 9, 8, 7
macOS® 10 or higher

FUNCTION KEYS:

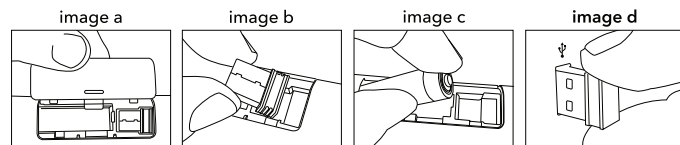
To access these functions you must hold down the FN key plus the F key you are trying to use. Some of these functions may not work on an Apple computer.

F1: Media, F2: Decrease Volume, F3: Increase Volume, F4: Mute, F5: Previous Track, F6: Next Track, F7: Play/Pause, F8: Music Stop, F9: Web Browser, F10: Email, F11: This PC settings, F12: Opens the Favorites List

KEYBOARD CONFIGURATION AND OPERATION

This keyboard is battery-operated and uses one AA 1.5V AA Alkaline Battery (not included). Below find the steps for battery installation and computer connectivity.

- To install the battery, remove the battery compartment cover. (image a)
- Remove the USB receiver from its compartment. (image b)
- Once the cover is removed place the battery in the empty battery compartment. Note, the battery must be placed in the correct polarity to function. The keyboard's green LED light will turn on for 5 seconds then turn off, indicating that the battery has been installed correctly. Replace cover when done. (image c)
- Insert USB receiver into your computer's USB port. Once inserted the keyboard is ready to use. (image d)

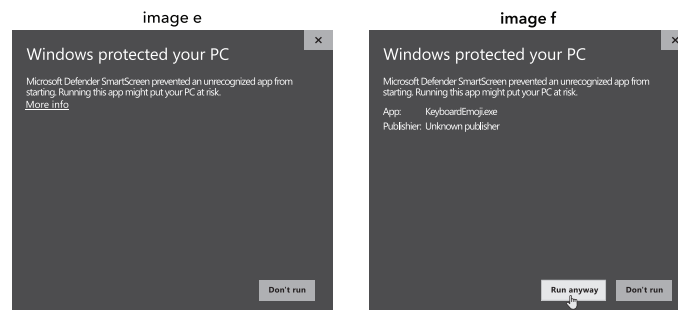


This keyboard features four of the most used emojis, 🤔👍❤️🧐, for use on all social media platforms and applications as preset keys. This function is compatible with PC and Mac operating systems. Download the software by visiting the follow URL:

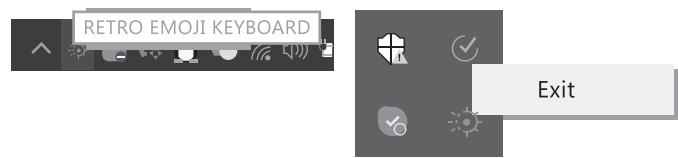
<https://www.gocyo.com/pages/emoji-keyboard>. You will have the option to download the PC or Mac version of the software. Below find the steps for installing the downloaded software onto your computer.

PC SOFTWARE INSTALLATION

- Once you have downloaded the RETRO EMOJI KEYBOARD-WIN-1.0.2.0.zip file, locate the file in your downloads folder and unzip it.
- When the file is uncompressed open the RETRO EMOJI KEYBOARD-1.0.2.0 folder and run the RETRO EMOJI KEYBOARD.exe file.
- You may get the "Windows protected your PC" prompt if you do press the "More info" link (image e). Then press the "Run anyway" button to proceed with installation. (image f)
- Once installation is complete you will need to open and run the RETRO EMOJI KEYBOARD application to use the keyboards emoji feature.

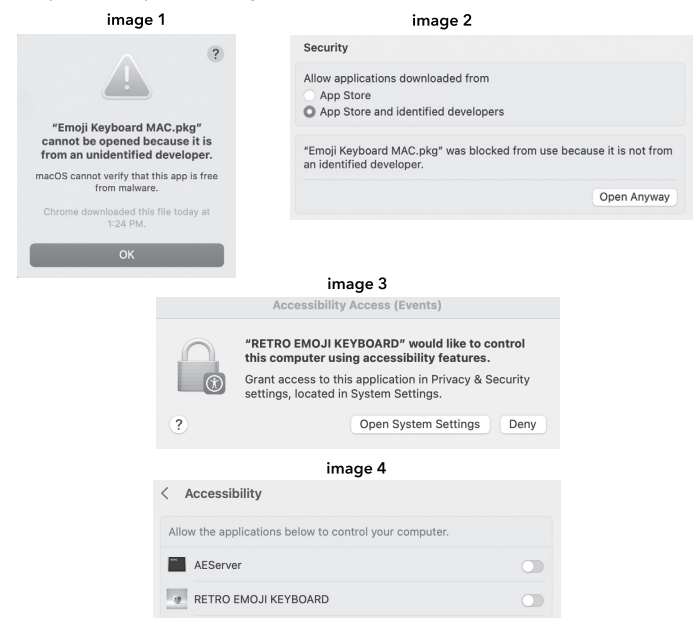


How the software appears in the desktop menus



MAC SOFTWARE INSTALLATION

- Once you have downloaded the Emoji Keyboard MAC.pkg file, It will be saved as Emoji Keyboard MAC.zip. Locate the file in your downloads folder and unzip it.
- When the file is uncompressed open the Emoji Keyboard MAC.pkg application to begin installation.
- The macOS will require you to give the application permission to install. (image 1)
- You will need to go into the System Settings located in the 🍏 menu. Once the System Settings are available locate the Privacy & Security sub-menu. Under the Security section you have the option to allow installation of the software. (image 2)
- Once installation is complete locate the RETRO EMOJI KEYBOARD software in your applications folder. A system prompt will ask to grant accessibility access to this application. (Image 3)
- The prompt will take to directly the Accessibility sub-menu within the Privacy & Security menu within the System Settings. Grant access RETRO EMOJI KEYBOARD software use the keyboards emoji feature. (Image 4)



MANUAL TECH PACK

BRAND UPTECH

STYLE # UPT-KEYBORD02

CATEGORY

PAPER QUALITY

DIMENSIONS WIDTH: 4" HEIGHT: 5"

FILE SAVED ON SERVER
(LOCATION OF FILE ON SERVER)

FILE SAVED AS:

- A.I. (FULLY EDITABLE)
- A.I. (OUTLINED)
- PDF

APPROVAL CHECKLIST:

PRIMARY DESIGNER:
CONRAD LANDAIS
DATE: **2-5-24**

COPY APPROVAL
PROOF READ

SECONDARY DESIGNER:
DATE:

AUTHORIZATION SIGNATURES:

C.E.O. DIRECTOR
DATE: DATE:

COPY PROVIDED

PROOF READ

MANUAL

SIGNATURE: **CONRAD LANDAIS**

DATE: **2-5-24**

©2022 MiWorld Accessories | 1 East 33rd Street, New York, NY 10016 | (212)889-1012