

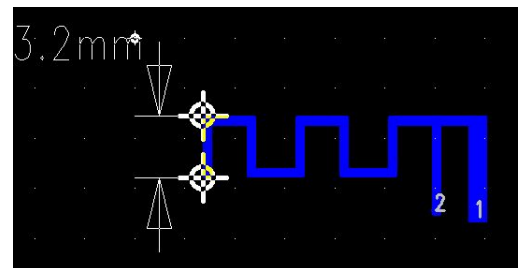
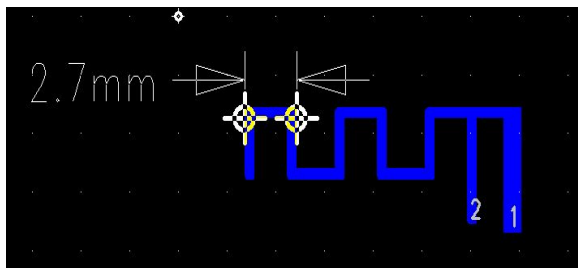
PCB Antenna Specification

Specifications Summary

ITEM	SPEC.
Antenna Type	Type 2 single wiggle Antenna
MAX. GAIN	0.00 dBi
Polarization	Horizontal
Azimuth Beam Pattern	Omni-directional
Impedance	50 Ω
Antenna Length	3.3cm

Model	TFL-02
Frequency range	2400-2500MHz
Manufacturer	Shenzhen Saiming Photoelectric Technology Co., Ltd.

Antenna Photo & Length (mm)



Test Date	2022-04-14
Test Instrument	vector network analyzer - R&S ZVB20

