

## 1. Antenna Description:

Antenna type	PIFA antenna
Model	J10
Frequency range	5745-5825MHz
Manufacturer	Zhuoyue Technology (Shenzhen) Co., Ltd
ANT Peak Gain	1.32 dBi

## 2. Antenna Photo:

Length: 21.24mm  
Width: 10.42mm



### 3. Test Equipment & Conditions

#### 3.1 Test instrument

VSWR is tested using Agilent E5071B connected to a hand mechanism, and the status is free space.

#### 3.2 Test environment and methods

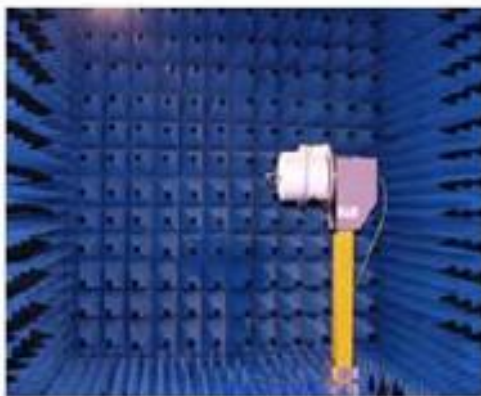
Dark room specifications: ETS-743

TD-SCDMA test equipment: StarPoint SP6010/Agilent 8960

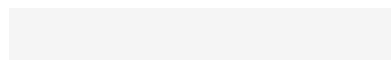
LTE-TDD/FDD-SCDMA test equipment: StarPoint SP8011/CMW500

WCDMA/GSM/CDMA test equipment: Agilent 8960

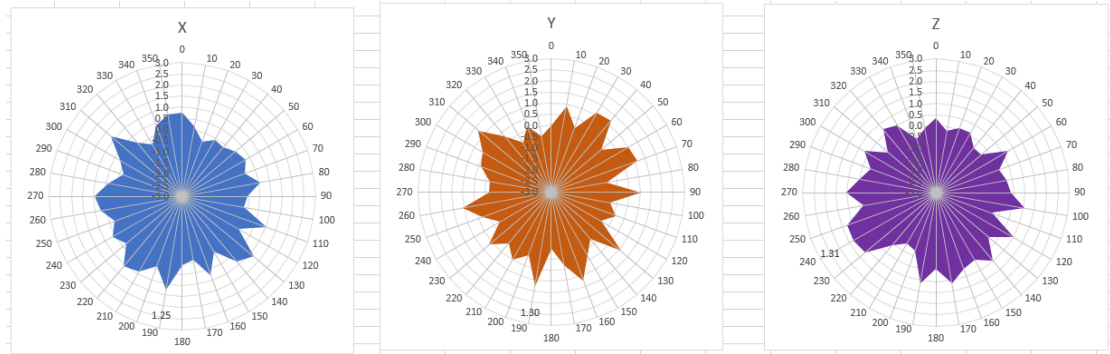
Passive efficiency testing equipment: Agilent Technologies E5071B



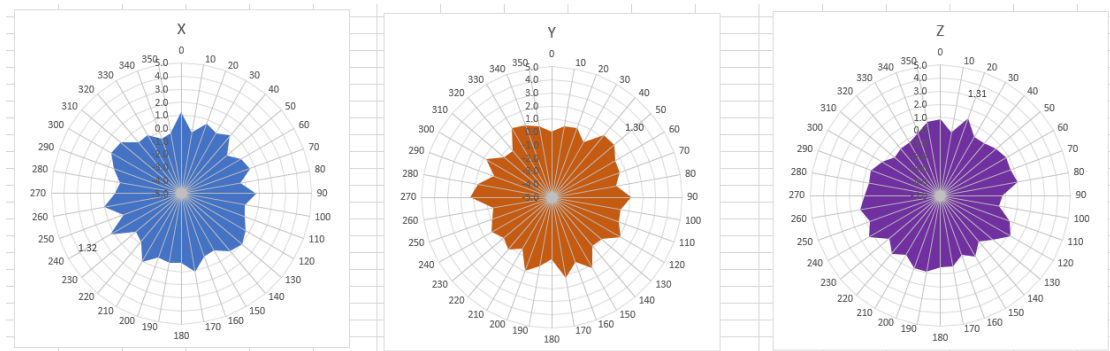
### 4 . Antenna Radiation Pattern



# 5745MHz



# 5785MHz



# 5825MHz

