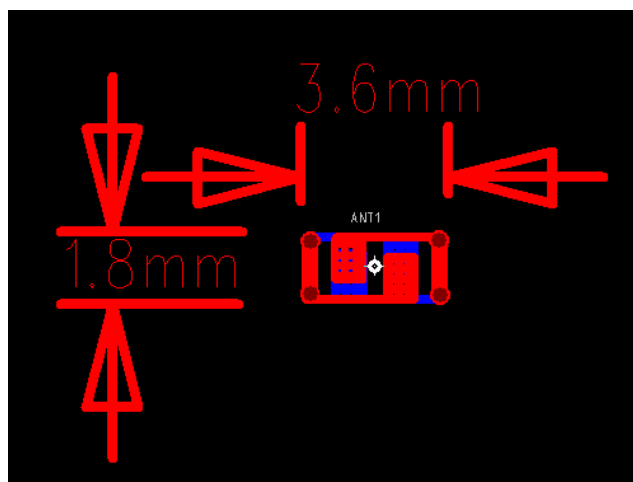


# Product specification

Quick Reference Date

	Antenna module on the system board	
Frequenc Range	2400 ~ 2500MHz	
Ant. Port Input Pwr. (dBm)	0 (Typ. BT class 2 output power)	
Tot. Rad. Pwr. (dBm)	-1.1 (Input pwr – loss pwr)	
Peak EIRP(dBm)	1.1	
Directivity (dBi)	1 (all direction antenna)	
Efficiency (dB)	6 0.2 %	
Gain (dBi)	1.2 (Avg Gain XY-plane)	
Maximum Power (dBm)	1.6 (XY-plane)	
Minimum Power (dBm)	-4(XY-plane)	
Avg. Power (dBm)	-0.5(XY-plane)	
Input Impedence(ohm)	50	
Polarization Type	V ertical & Horizontal	
V . S .W.R	< 1.5	

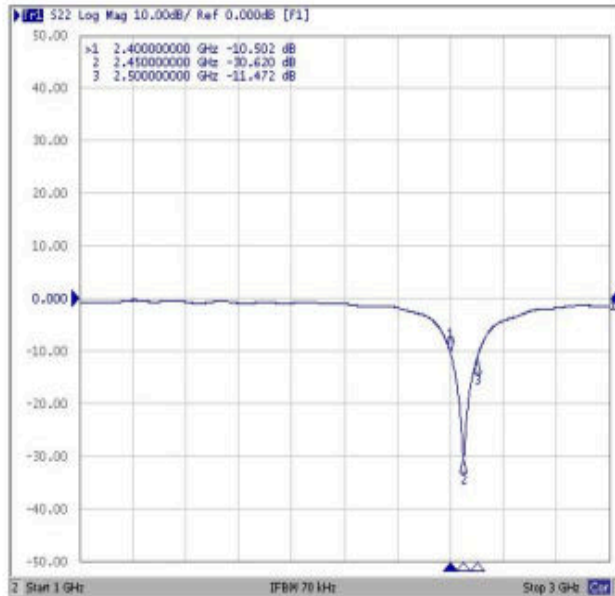
All the technical data and information contained herein are subject to change without prior notice  
Antenna Layout & module on the system board



# Return Loss

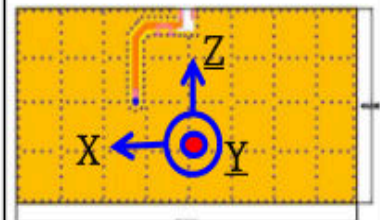
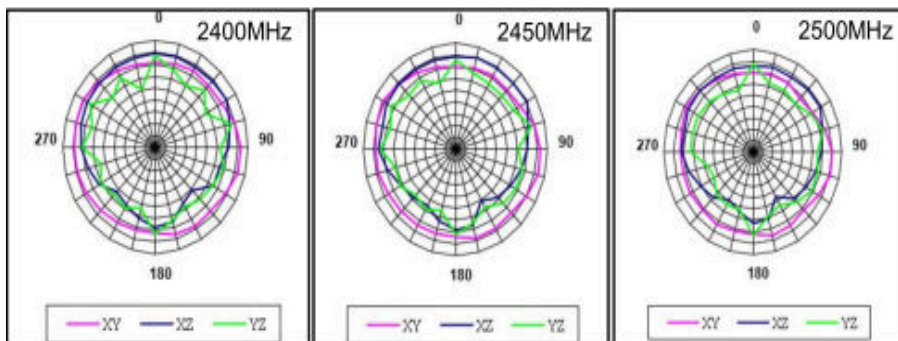
## Return Loss & Radiation

### Return Loss

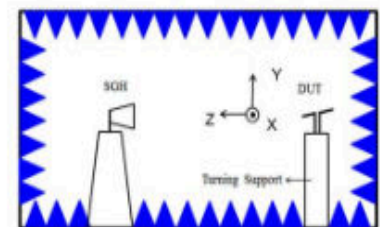


Frequency(MHz)	S11 (dB)
2400	-10.50
2450	-30.62
2500	-11.47

### Radiation



	2400MHz	2450MHz	2500MHz
Efficiency	82.52%	85.26%	83.01%



# 3D radiation pattern diagram

