

# M806TU/乐巢SEENDA/MOU-301/说明书

英语

SEENDA

## User Manual

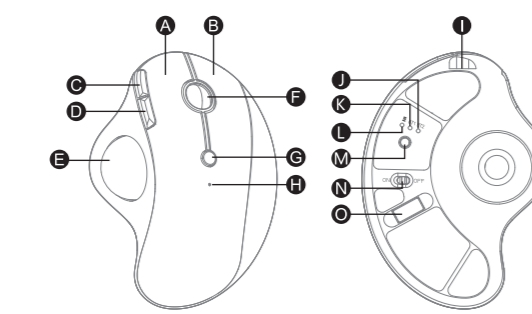
2.4G+Bluetooth+Bluetooth Wireless  
Ergonomic Trackball Mouse

MOU-301

### CONTENTS

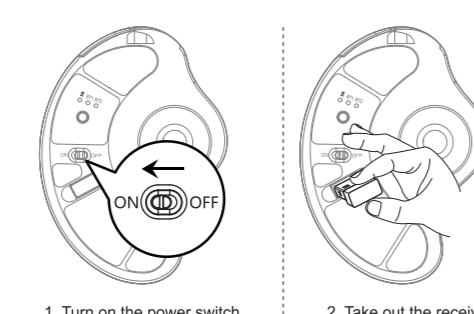
Product Features	2
2.4G USB Connection	3
Bluetooth Connection	4
Charging Function Guide	11
How to Switch Connection Mode	12
Data Parameters	13
What's in Package	13

### Product Features



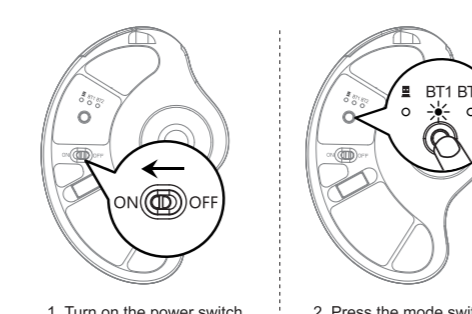
- A Left Button
- B Forward Button
- C Trackball
- D DPI Button
- E TYPE-C Charging Port
- F Bluetooth 1 Indicator
- G Switch Device Button
- H USB Receiver
- I Right Button
- J Backward Button
- K Scroll Wheel
- L Charging / DPI Indicator
- M Bluetooth 2 Indicator
- N 2.4G Indicator
- O Power Switch
- P
- Q

### 2.4G USB Connection



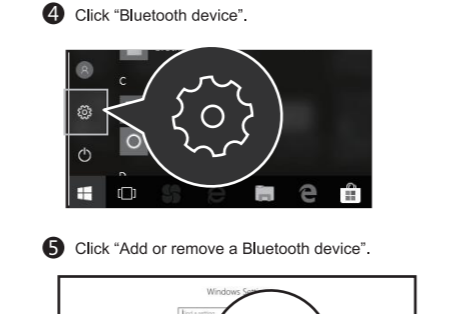
1. Turn on the power switch to ON.
2. Take out the receiver.
3. Press the mode switch button until the white light is on and enter 2.4G mode.
4. Insert the usb receiver into your computer's usb port.

### Bluetooth Connection



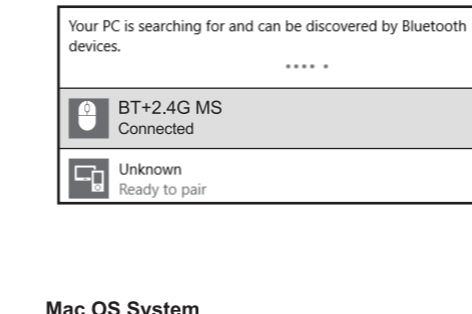
1. Turn on the power switch to ON.
2. Press the mode switch button and switch to BT1 or BT2 mode, the white light flashes slowly.
3. Press and hold the mode switch button for 3-5 seconds until the white light flashes quickly, then the mouse enters the Bluetooth pairing mode.

### Windows 10 System



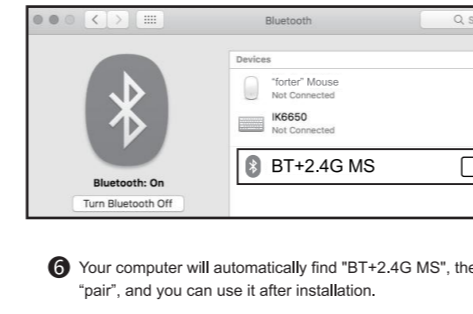
1. Click "Bluetooth device".
2. Click "Add or remove a Bluetooth device".
3. Your computer will automatically search for "BT+2.4G MS" and then click "pair".

### Mac OS System



- Please complete the Bluetooth mode installation step 123 before pairing.
1. Click "System Preferences" on Mac.

### iOS System



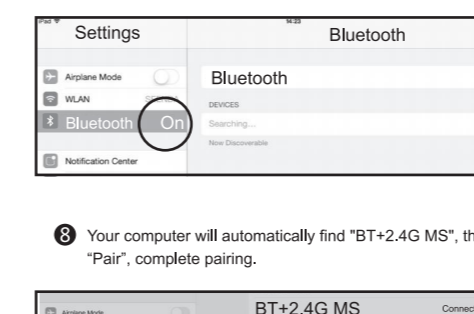
- "BT+2.4G MS" is connected and can be used normally.
1. Click "Bluetooth" in "System Preferences".

### Android system



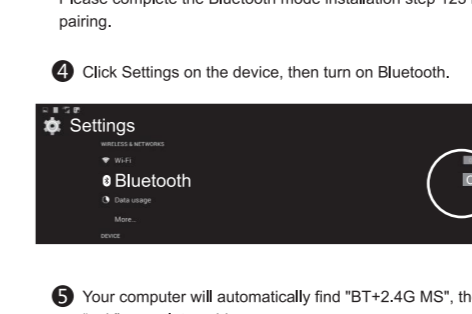
- Please complete the Bluetooth mode installation step 123 before pairing.
1. Click Settings on your device, then turn on Accessibility.
  2. Click Settings on the device, then turn on Bluetooth.
  3. Your computer will automatically find "BT+2.4G MS", then click "pair", complete pairing.

### Charging Function Guide



- When the power is insufficient, the charging indicator and the corresponding channel indicator flash until it is turned off. Please connect the power supply for charging in time, and use the USB cable to connect the TYPE-C charging Port.
- Connect the charging cable to the USB port of the computer, the charging indicator is always on during charging, the charging time is about 1-3.5 hours and the indicator light turns off when charging is complete.

### How to switch connection mode



- After BT1, BT2 and 2.4G USB mode is connected, press the mode switch button on the bottom of the mouse to switch between multiple devices.
- 2.4G USB Connection
  - Wireless 1 Device Connection
  - Wireless 2 Device Connection

### Data parameters

**Basic parameter:**  
Movement Detection Technology: Optical  
Lithium Battery Capacity: 300mA  
Click Life: 3 million+  
Dimension: 134.4x98.2x47.2mm  
Weight: 136g

**Bluetooth transmission parameters:**  
Transmission distance: 10m  
Working Voltage: 3.7V  
Working current: 8mA  
Reaction rate: 125Hz

**2.4G transmission parameters:**  
Transmission distance: 20m  
Working Voltage: 3.7V  
Working current: 10mA  
Reaction rate: 250Hz

**System requirement:**  
An available USB port  
Windows XP, Windows 7, Windows 8, Windows 10 or higher version  
Mac OS x 10.4 or higher version

### What's in Package

- 1 x Wireless Mouse
- 1 x USB Receiver
- 1 x Type C Charging Cable
- 1 x User Manual

### Warning

Changes or modifications to this unit not expressly approved by the party responsible for compliance void the user's authority to operate the equipment.

**NOTE:**  
This device complies with part 15 of the FCC Rules. Operation is subject to the following two conditions: (1) This device may not cause harmful interference, and (2) this device must accept any interference received, including interference that may cause undesired operation.

**FCC Statement:**  
This equipment has been tested and found to comply with the limits for a Class B digital device, pursuant to part 15 of the FCC Rules. These limits are designed to provide reasonable protection against harmful interference in a residential installation. This equipment generates, uses and can radiate radio frequency energy and, if not installed and used in accordance with the instructions, may cause harmful interference to radio communications. However, there is no guarantee that interference will not occur in a particular installation. If this equipment does cause harmful interference to radio or television reception, which can be determined by turning the equipment off and on, the user is encouraged to try to correct the interference by one or more of the following measures:  
—Reorient or relocate the receiving antenna.  
—Increase the separation between the equipment and receiver.  
—Connect the equipment into an outlet on a circuit different from that to which the receiver is connected.  
—Consult the dealer or an experienced radio/TV technician for help.

- 1 -

- 2 -

- 3 -

- 4 -

- 5 -

- 6 -

- 7 -

- 8 -

- 9 -

- 10 -

- 11 -

- 12 -

- 13 -