

Antenna test report

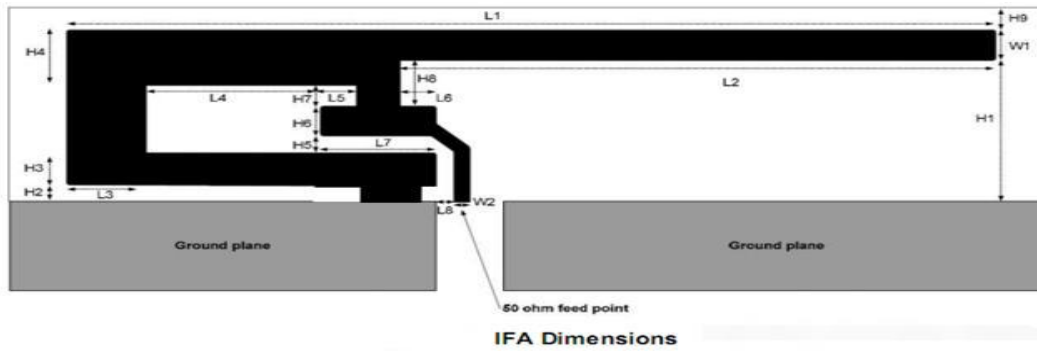
1. Specification

| | |
|---------------|--|
| EUT Name | CBU Antenna |
| Manufacturer: | Shenzhen Chiheng Industrial Co., Ltd. |
| Antenna Type | PCB antenna |
| Dimensions | Appendix A |

2. Technical Information

| | |
|-----------------|------------------------|
| Frequency Range | 2400MHz~2500MHz |
| Test Frequency | 2400, 2410.....2500MHz |

3. Appendix A Antenna Dimension



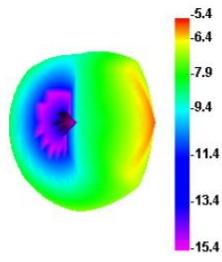
| | | | |
|----|--------|----|---------|
| H1 | 2.01mm | W2 | 0.29mm |
| H2 | 0.24mm | L1 | 12.35mm |
| H3 | 0.48mm | L2 | 9.34mm |
| H4 | 0.84mm | L3 | 0.66mm |
| H5 | 0.23mm | L4 | 1.52mm |
| H6 | 0.39mm | L6 | 0.59mm |
| H7 | 0.51mm | L7 | 0.51mm |
| H8 | 0.59mm | L8 | 0.82mm |
| H9 | 0.63mm | | |
| W1 | 0.48mm | | |

4. Appendix C Gain and Efficiency

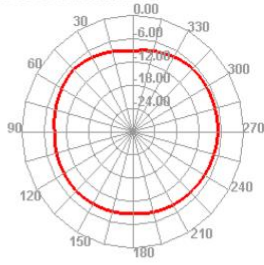
| Passive Test For BT2.4 | | | | | | | | | | | | |
|------------------------|----------|-----------|------------|------------|---------|----------|----------|----------|------------------|-----------------|-----------|-----------|
| Freq (MHz) | Effi (%) | Effi (dB) | Gain (dBi) | Gain (dBd) | UHS (%) | DHIS (%) | Max (dB) | Min (dB) | irectivity (dBi) | Beamwidth (3dB) | AttH (dB) | AttV (dB) |
| 2400 | 14.59 | -8.36 | -5.4 | -7.55 | 0 | 0 | -5.4 | -15.03 | 8.36 | 0 | 46.98 | 46.74 |
| 2410 | 14.93 | -8.26 | -5.29 | -7.44 | 0 | 0 | -5.29 | -15.74 | 8.26 | 0 | 47.02 | 46.81 |
| 2420 | 15.43 | -8.12 | -4.89 | -7.04 | 0 | 0 | -4.89 | -16 | 8.12 | 0 | 47.61 | 47.33 |
| 2430 | 16.83 | -7.74 | -4.49 | -6.64 | 0 | 0 | -4.49 | -16.08 | 7.74 | 0 | 47.09 | 46.89 |
| 2440 | 21.14 | -6.75 | -3.6 | -5.75 | 0 | 0 | -3.6 | -15.35 | 6.75 | 0 | 47.31 | 47.09 |
| 2450 | 22 | -6.57 | -3.43 | -5.58 | 0 | 0 | -3.43 | -15.13 | 6.57 | 45 | 47.33 | 47.06 |
| 2460 | 23 | -6.38 | -3.14 | -5.29 | 0 | 0 | -3.14 | -14.84 | 6.38 | 45 | 47.74 | 47.47 |
| 2470 | 24.35 | -6.13 | -2.9 | -5.05 | 0 | 0 | -2.9 | -14.85 | 6.13 | 0 | 47.62 | 47.29 |
| 2480 | 26.83 | -5.71 | -2.31 | -4.46 | 0 | 0 | -2.31 | -15 | 5.71 | 0 | 47.53 | 47.33 |
| 2490 | 35.81 | -4.46 | -0.85 | -3 | 0 | 0 | -0.85 | -14.08 | 4.46 | 0 | 47.51 | 47.26 |
| 2500 | 34.38 | -4.64 | -0.91 | -3.06 | 0 | 0 | -0.91 | -13.93 | 4.64 | 0 | 47.26 | 47.03 |

5. Appendix D Radiation Pattern

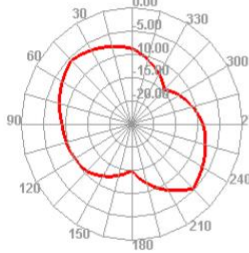
2400.000MHz



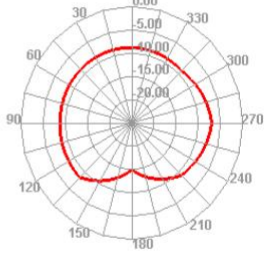
2400.000MHz H



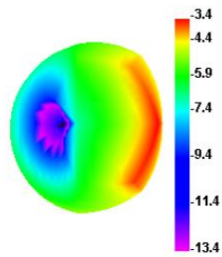
2400.000MHz E1



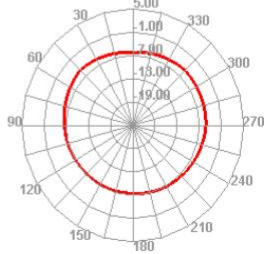
2400.000MHz E2



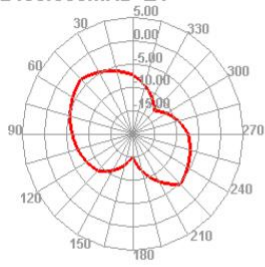
2450.000MHz



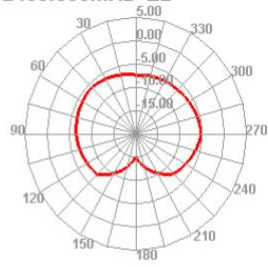
2450.000MHz H



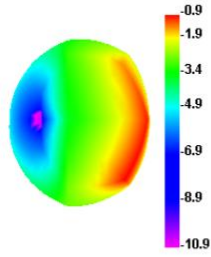
2450.000MHz E1



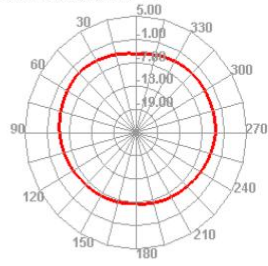
2450.000MHz E2



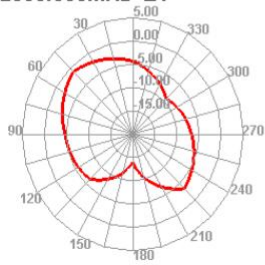
2500.000MHz



2500.000MHz H



2500.000MHz E1



2500.000MHz E2

