

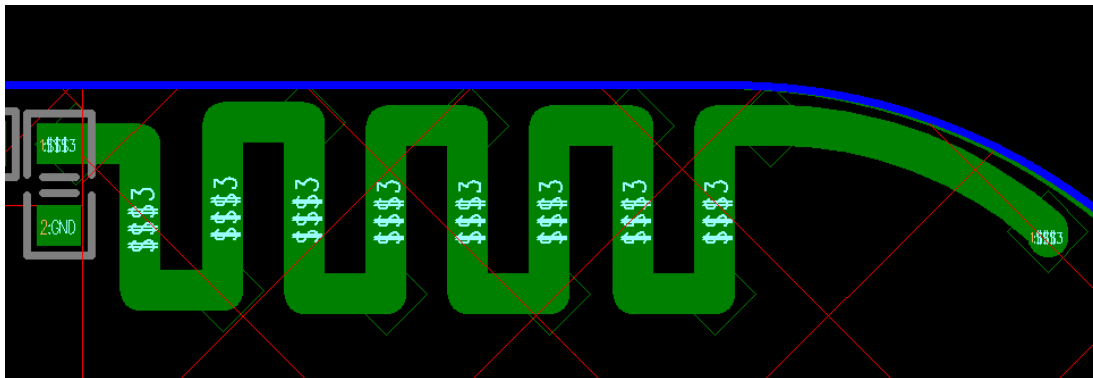
Product specification

Quick Reference Date

	Antenna module on the system board	
Frequenc Range	2400 ~ 2500GHz	
Ant. Port Input Pwr. (dBm)	0 (Typ. BT class 2 output power)	
Tot. Rad. Pwr. (dBm)	-1.2 (Input pwr – loss pwr)	
Peak EIRP(dBm)	0	
Directivity (dBi)	1 (all direction antenna)	
Efficiency (dB)	1.0%	
Gain (dBi)	0 (Avg Gain XY-plane)	
Maximum Power (dBm)	0 (XY-plane)	
Minimum Power (dBm)	0(XY-plane)	
Avg. Power (dBm)	0(XY-plane)	
Input Impedence(ohm)	50	
Polarization Type	V ertical & Horizontal	
V . S . W . R	< 6	

All the technical data and information contained herein are subject to change without prior notice

Antenna Layout & module on the system board

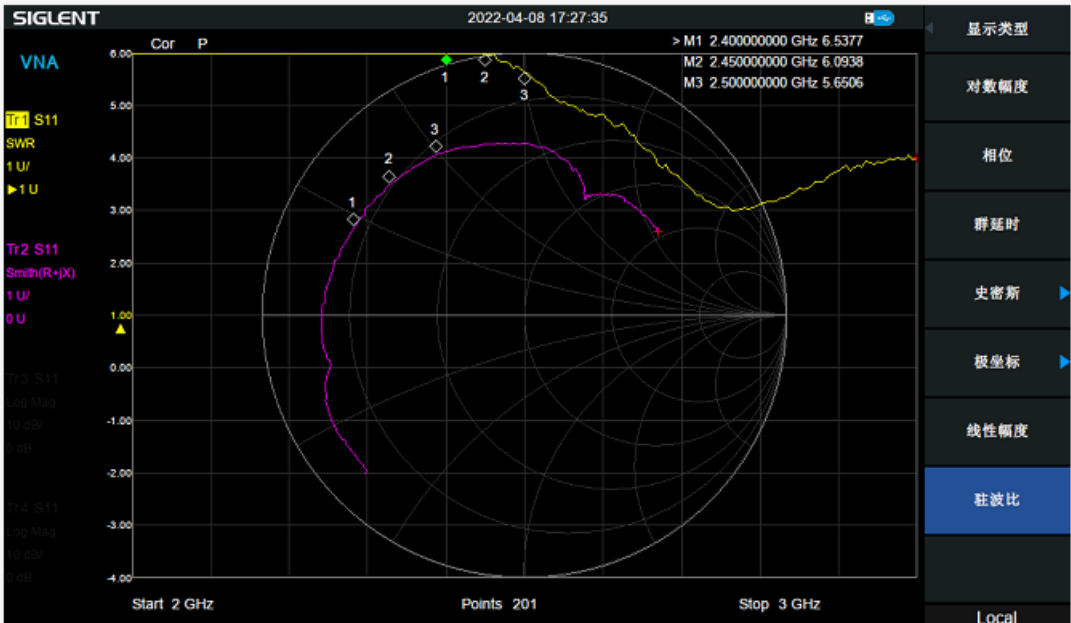


Antenna Gain

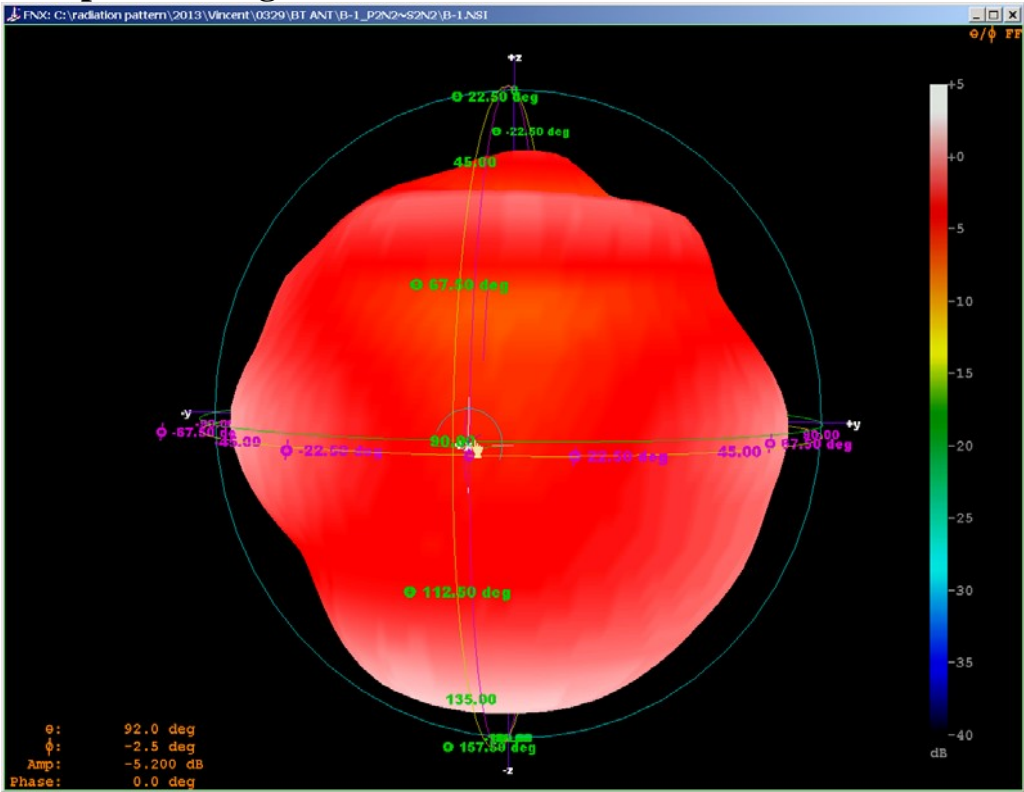
Gain Table

Unit in dBi @2.44GHz	XY-plane		XZ-plane		YZ-plane		Efficiency
	Peak	Avg.	Peak	Avg.	Peak	Avg.	
Module Board	0	0	0	0	0	0	0

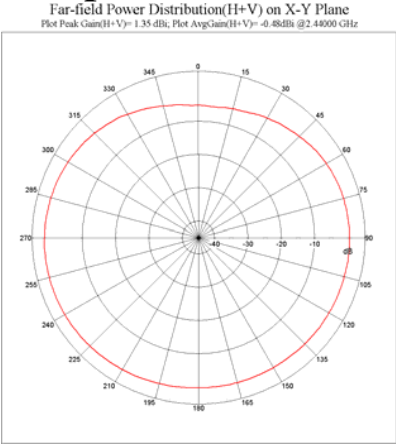
Return Loss



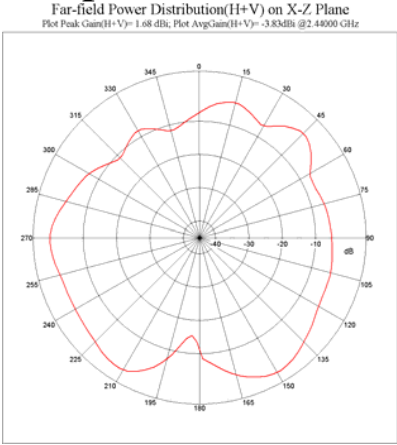
3D radiation pattern diagram



XY-plane



XZ-plane



YZ-plane

