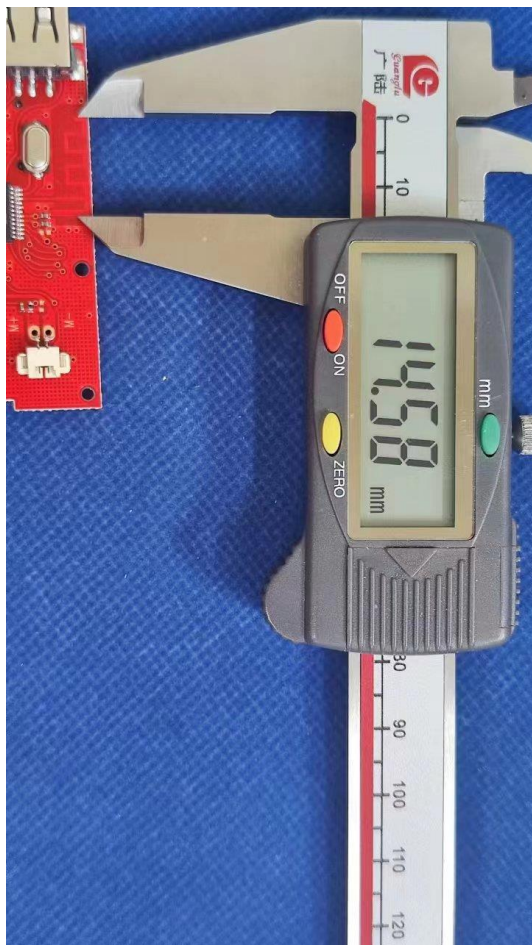


## 1. Antenna Description:

|                 |                                                      |
|-----------------|------------------------------------------------------|
| Antenna type    | PCB antenna                                          |
| Model           | WS-858                                               |
| Frequency range | 2400-2500MHz                                         |
| Manufacturer    | Shenzhen HongXinYeHui Electronic Technology Co., Ltd |
| ANT Peak Gain   | 1.87 dBi                                             |

## 2. Antenna Photo:

Length: 14.58mm  
Width: 5.21mm



### 3. Test Equipment & Conditions

#### 3.1 Test instrument

VSWR is tested using Agilent E5071B connected to a hand mechanism, and the status is free space.

#### 3.2 Test environment and methods

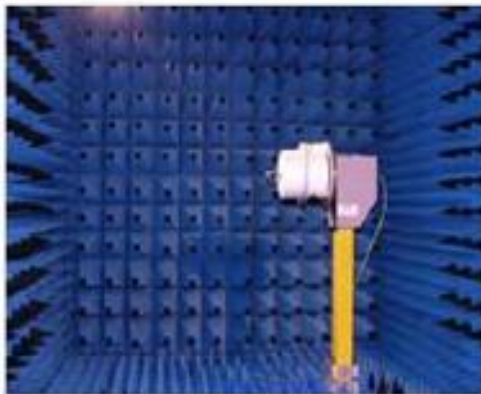
Dark room specifications: ETS-743

TD-SCDMA test equipment: StarPoint SP6010/Agilent 8960

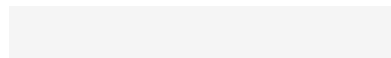
LTE-TDD/FDD-SCDMA test equipment: StarPoint SP8011/CMW500

WCDMA/GSM/CDMA test equipment: Agilent 8960

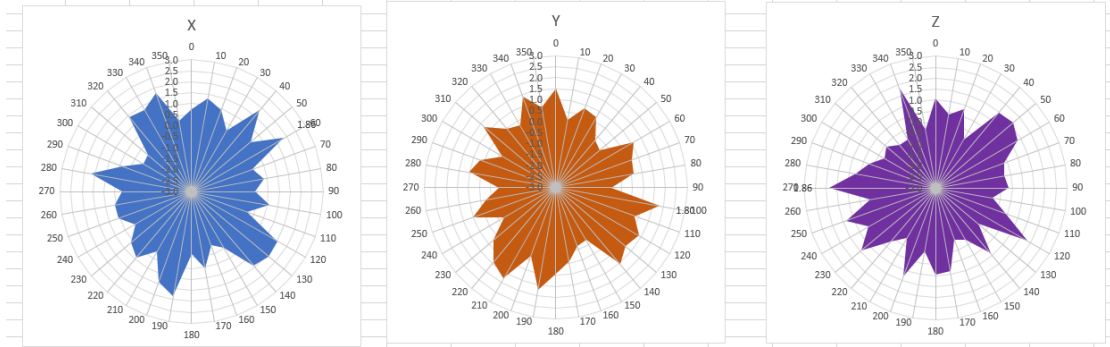
Passive efficiency testing equipment: Agilent Technologies E5071B



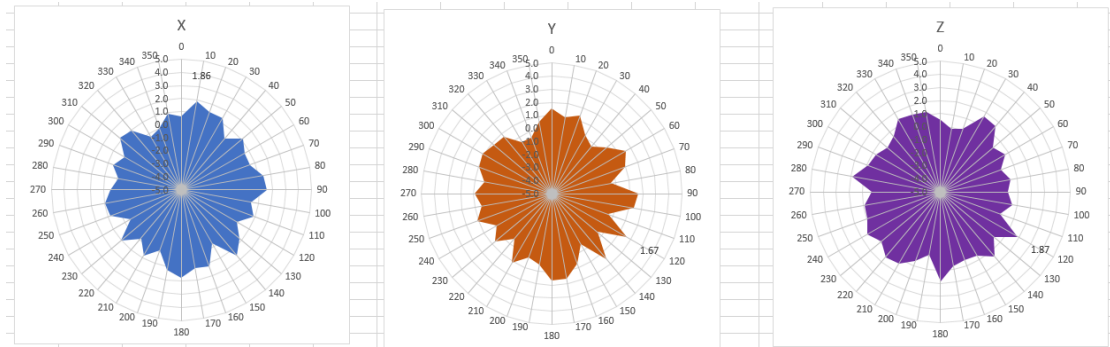
### 4 . Antenna Radiation Pattern



# 2400MHz



# 2450MHz



# 2500MHz

