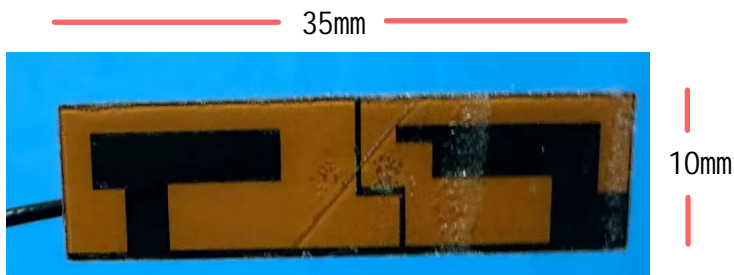


ANTENNA SPECIFICATION

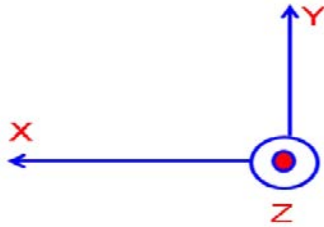
1. Summary

ITEM	ANT SPEC
Model Name	2.4G ANT
Antenna plate	FPC antenna
Frequency range	2400-2500MHz
MAX.gain	0dBi
Polarization	Vertical
Impedance	50 Ohm

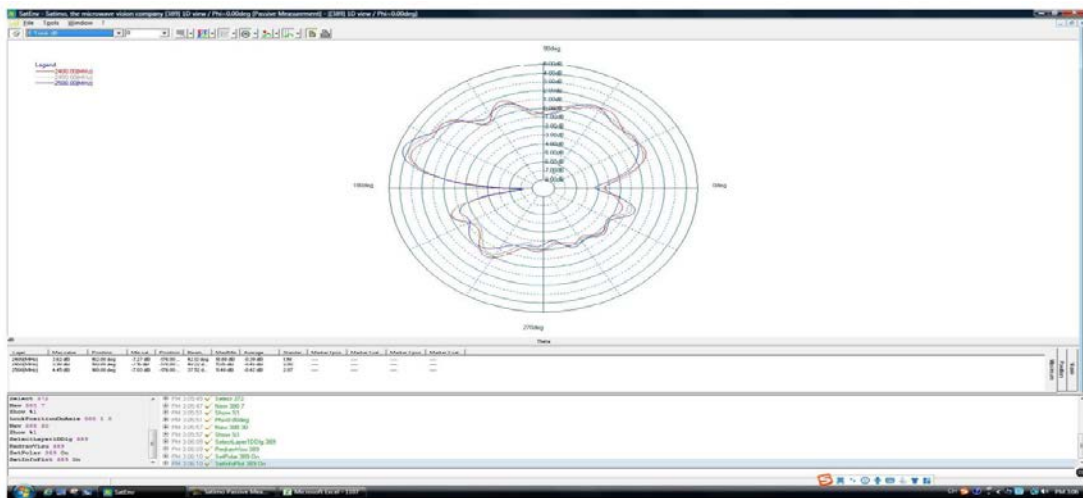
2. Antenna Photo & Length(mm)



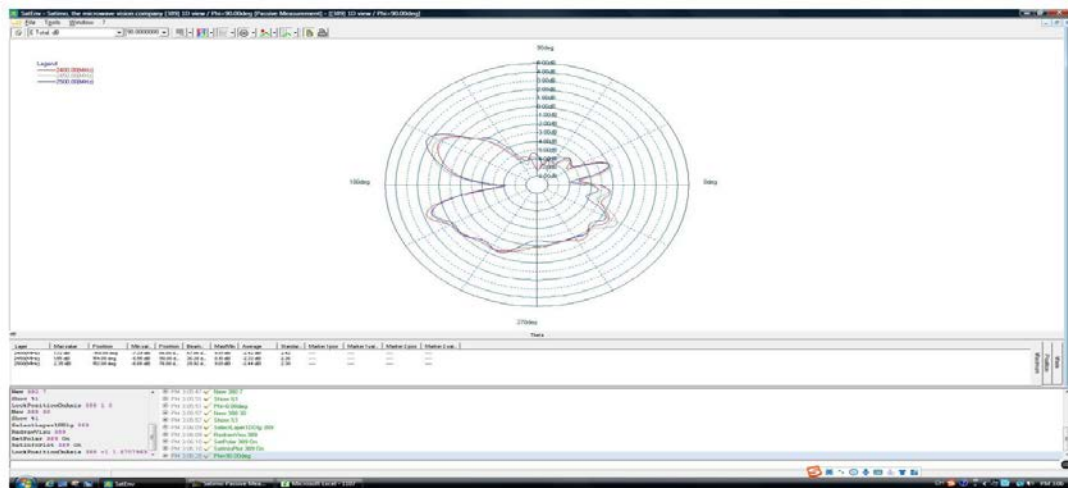
Radiation Pattern



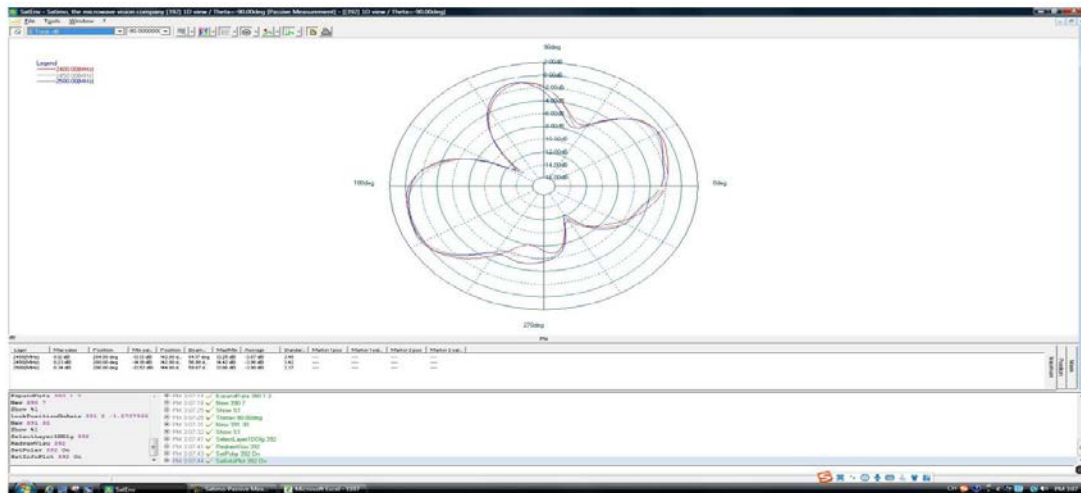
X-Z Plane



Y-Z Plane



X-Y Plane



3. Gain efficiency test data

WIFI Antenna			
Frequency (MHz)	2400	2447	2483.5
Efficiency (%)	42	46	45
Peak Gain (dBi)	-0.12	0.00	-0.15