



SPECIFICATION APPROVAL SHEET

客 户 :

CUSTOMER _____

CUS PART NO _____

REV X1

2.4~2.5/5.15~5.85GHz

SPECIFICATION WIFI Antenna L=110mm (Ø0.81+MHF)

weight _____

SUP PART NO SLEingB207300110-C03

DATE 2024.04.30

SUP APPROVED

APPROVED	CHECKED	QA CHECKED	DESIGNED
JONGREI	HZH	LSY	XIANG

CUS APPROVED

APPROVED	CHECKED	QA CHECKED	DESIGNED

DONGGUAN SLEing INTEL-TECH CO., LTD

Room 402, No. 6 Plant, Accelerator of Modern Enterprise, No, 24 Industry East Road Songshanlake District, Donguan City, Guangdong Province, China.

Tel: +86-076989208968

Fax: +86-0769-89208969

www.sleing.com

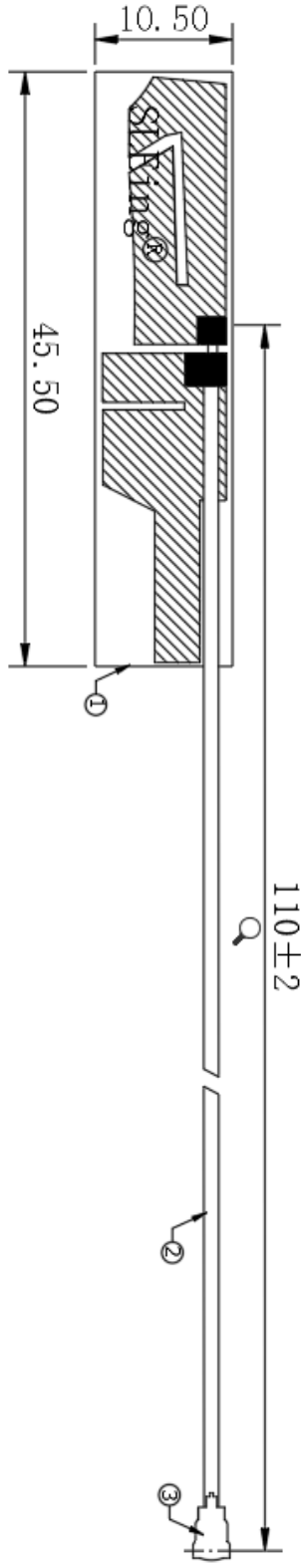
Spec Item

NO.	Project	Remark	Page
1	Spec Cover		1
2	MODIFICATION RECORD SHEET		2
3	Spec Item		3
4	Drawing		4
5	Test Reports		5
6	Antenna Profile		6
7	S Parameter Test		7
8	Test Setup		8
9	Patten		9~10
10	Test Efficiency		11

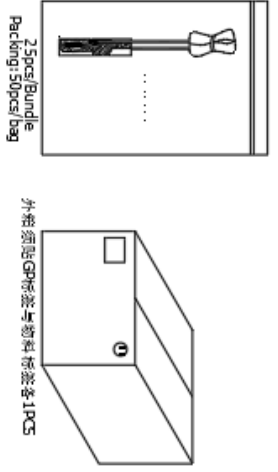
Give clear indication of:

1. The contents of the acknowledgement shall be arranged in order according to the items in the check sheet.
2. The number of copies of the acceptance letter shall be printed according to the customer's requirements, and the SGS report shall be stamped with the engineering seal.
3. All materials shall be confirmed by the customer. Any material/process/changes that may affect product quality and environmental quality must be re-sent to the customer for confirmation before import.
4. SGS report is valid for one year.
5. According to the contents attached to the actual acknowledgement, check the check form: "Yes" is provided, "no" is provided according to customer requirements.

REV.	CONTENT	DATE
X1	First Sample	2024.04.30



Specification:
 Frequency Rang:2.4~2.5/5.15~5.85GHz
 Return Loss:-10dB or less
 VSWR:1.92 Max



NO	PART NAME	DESCRIPTION	REMARK	Q'TY
3	Connector	MHF Plug for ϕ 0.81 Cable		1
2	Cable	ϕ 0.81mm Coaxial Cable Black, 50 Ω		1
1	FPCB	FPC, 145.5*110.5*10.1mm, Color:Black		1

		TOLERANCE UNLESS OTHERWISE SPECIFIED	
UNIT:mm	ANGLES: $\pm 0.5^\circ$	X.	± 0.3
SHEET: 1/1	.XX ± 0.05	XX.	± 0.5
SCALE: 1/1	XXX.	± 2.0	

SLEing® DONGGUAN SLEing INTEL-TECH CO., LTD		CUSTOMER	
PART NO		TITLE	
S.L.P/NO		SLEing8297300110-C08	
SIZE	DRAWN	CHECKED	APPROVED

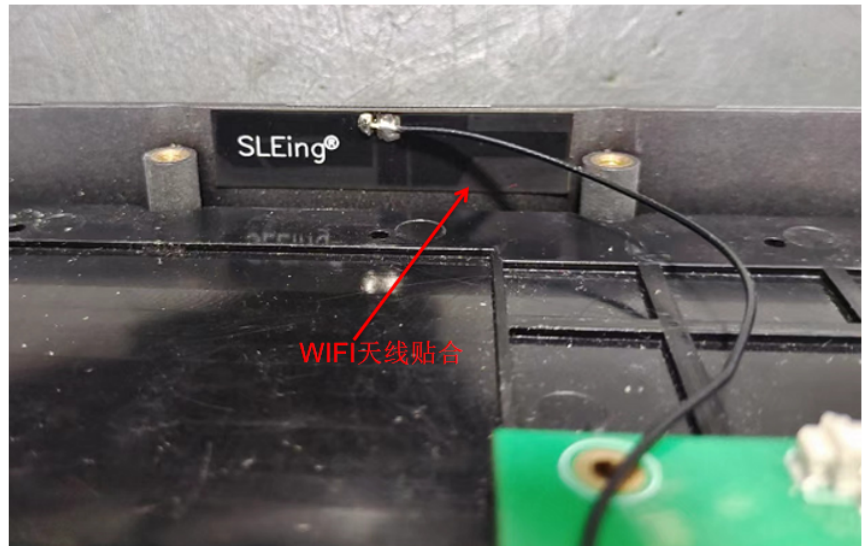


Test Reports

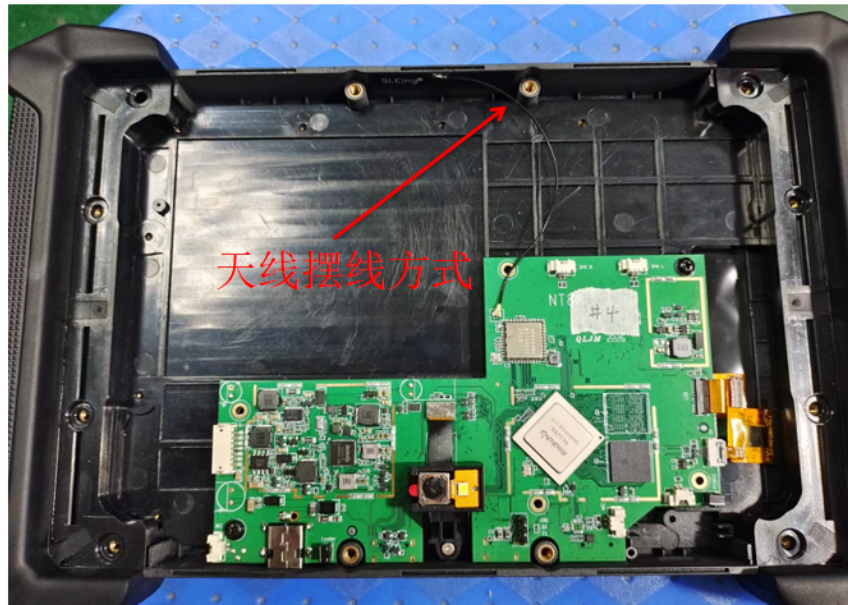
Electrical Properties	
Frequency	2.4~2.5/5.15~5.85GHz
Impedance	50 Ohm Nominal
V.S.W.R	≤ 1.92
Return Loss	-10dB Max
Radiation	Omni-directional
Gain (Peak)	2 \pm 0.5dBi
Polarization	Linear, Vertical
Admitted Power	2 W
Connector	MHF
Physical Properties	
Antenna Material	FPCB
Cable Type	Black
Cable Type	\varnothing . 81mm
Operating Temp	-40 $^{\circ}$ C -+85 $^{\circ}$ C
Storage Temp.	-40 $^{\circ}$ C -+85 $^{\circ}$ C

Antenna Profile

Device



Antenna

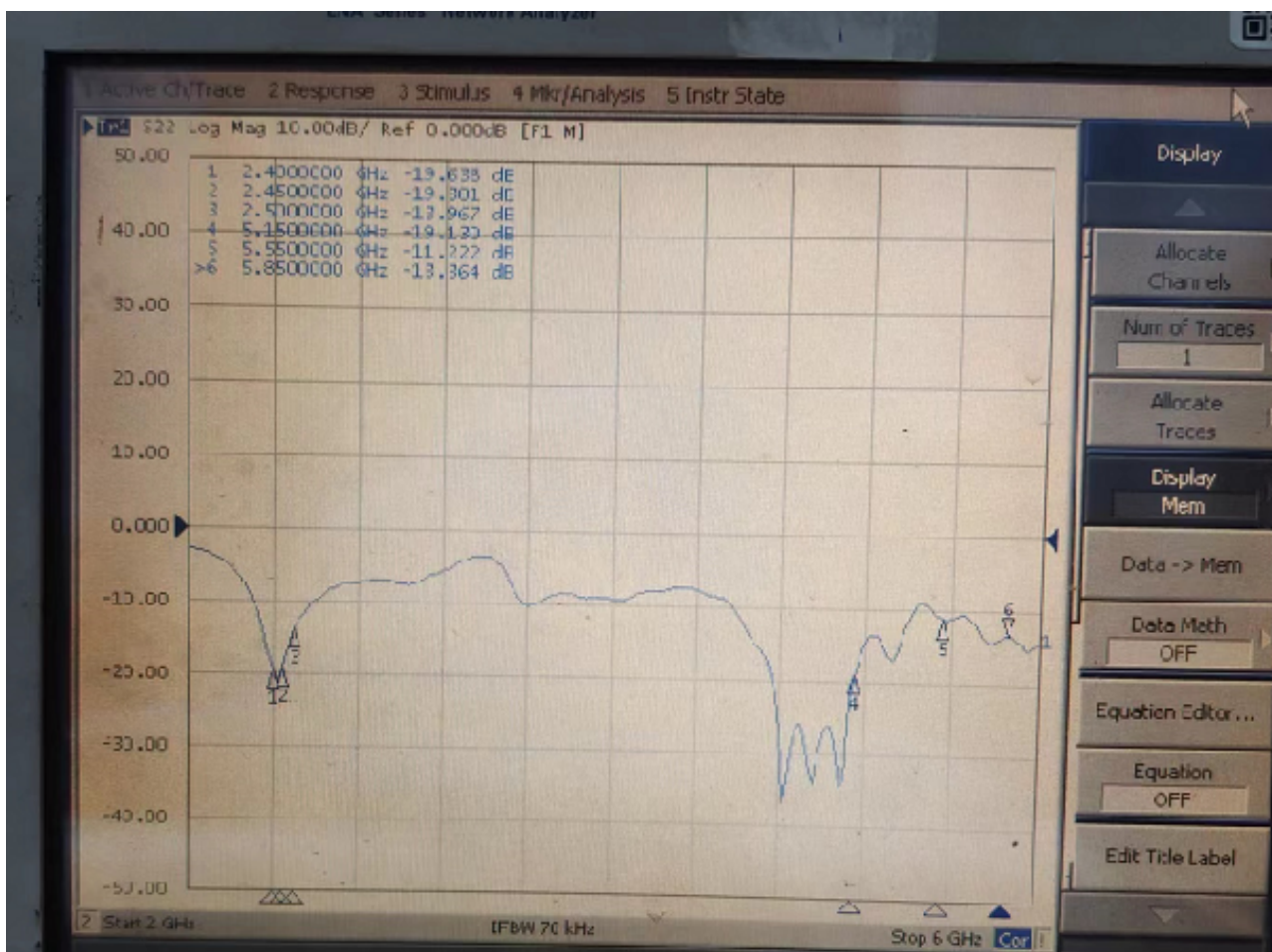


S Parameter Test

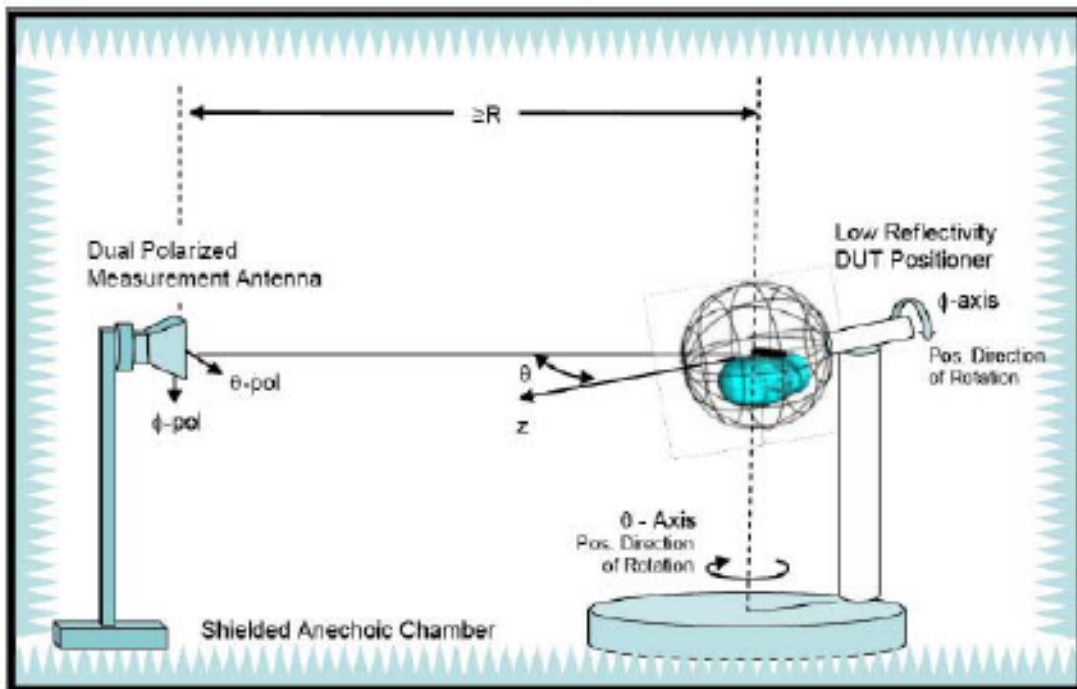
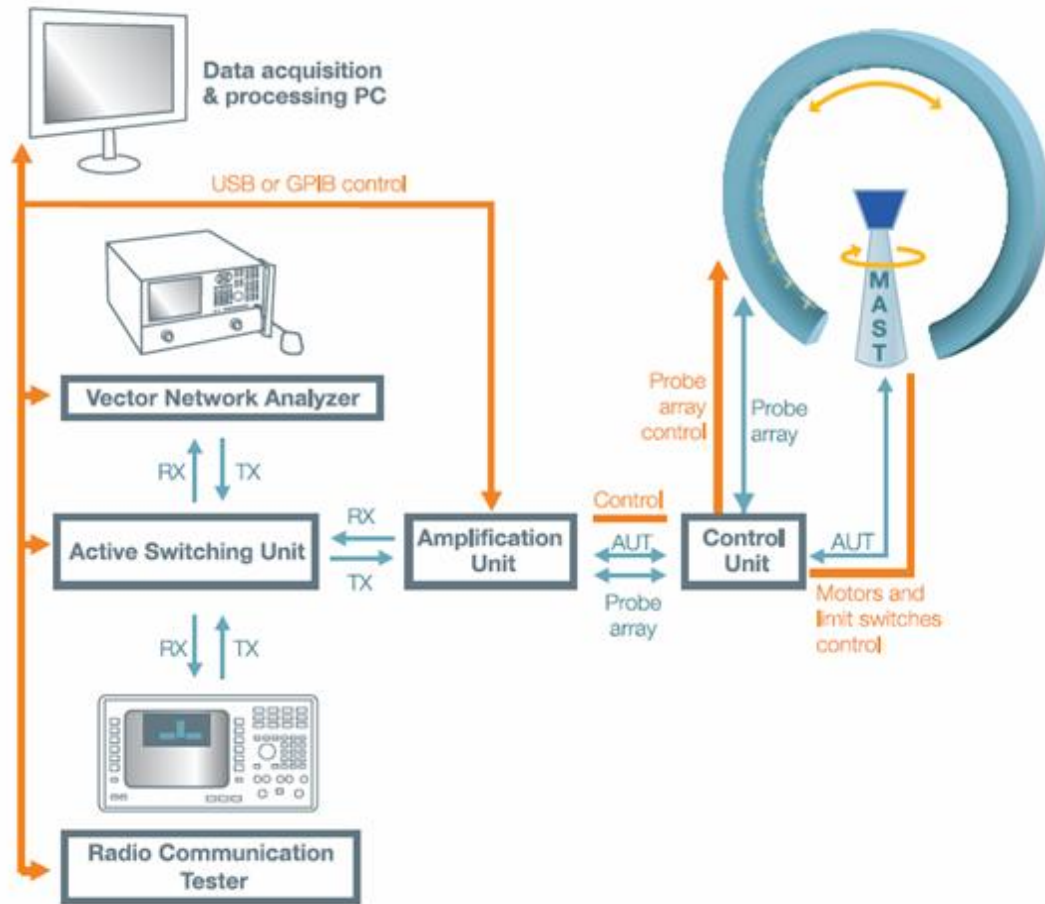
Agilent E5071C Network Analyzer



RF Antenna (Return Loss)



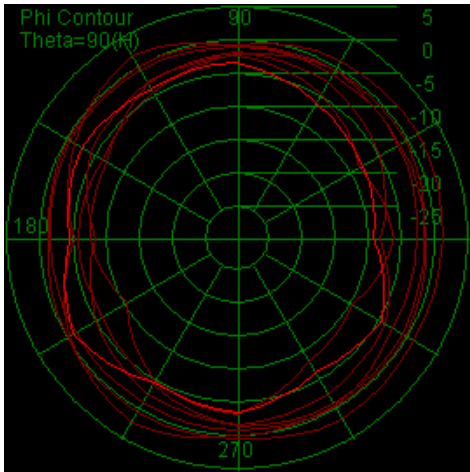
Test Setup



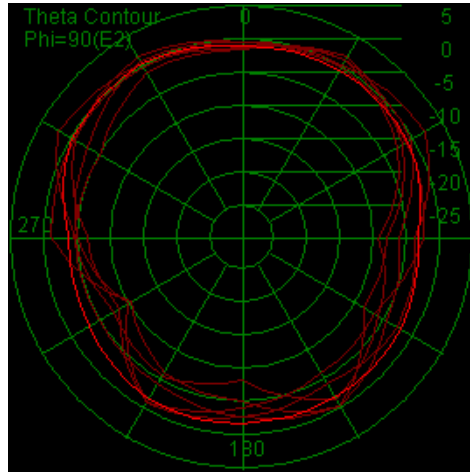
(2. 4G) Patten

1.3 2D Radiation patterns test results (Passive Antenna)

XZ Plane

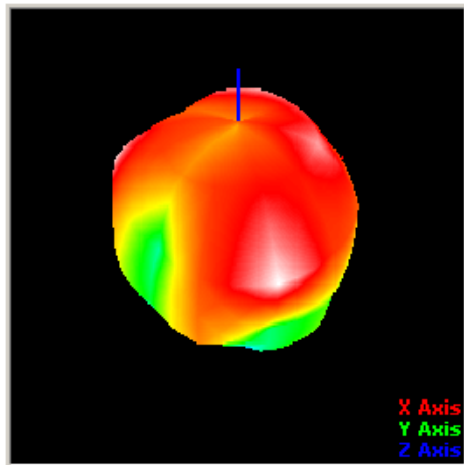


YZ Plane



1.5 3D Radiation patterns test results (Passive Antenna)

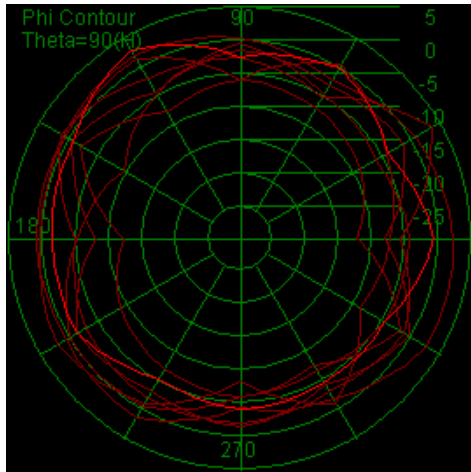
3D



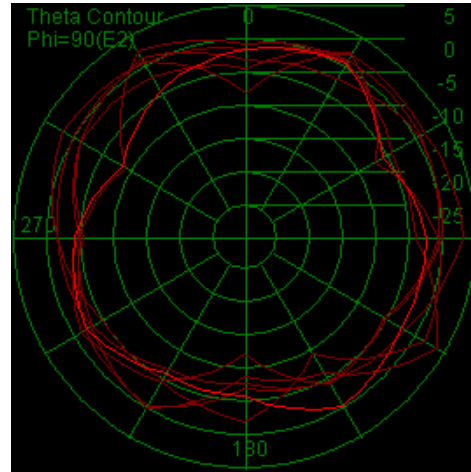
(5.8G) Patten

1.3 2D Radiation patterns test results (Passive Antenna)

XZ Plane

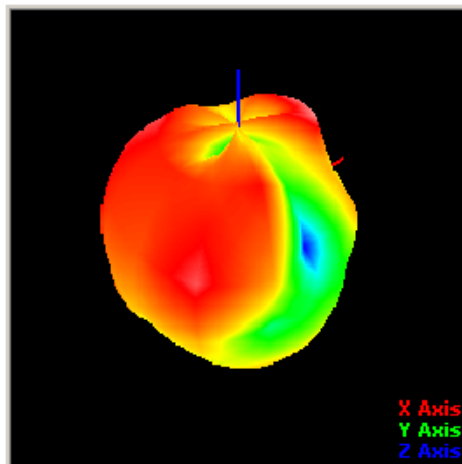


YZ Plane



1.5 3D Radiation patterns test results (Passive Antenna)

3D



Test Efficiency

Test Point ID	Freq. (MHz)	Gain (dBi)	Efficiency (%)
1	2400.0	1.72	46.9%
2	2410.0	2.26	41.6%
3	2420.0	2.10	49.2%
4	2430.0	2.60	46.5%
5	2440.0	2.29	50.7%
6	2450.0	3.05	50.5%
7	2460.0	3.35	55.6%
8	2470.0	3.94	57.6%
9	2480.0	2.13	58.6%
10	2490.0	2.84	52.7%
11	2500.0	2.80	48.4%
12	5150.0	2.82	53.5%
13	5200.0	2.70	56.0%
14	5250.0	2.81	53.0%
15	5300.0	2.26	57.4%
16	5350.0	3.75	59.8%
17	5400.0	3.48	55.3%
18	5450.0	2.99	49.4%
19	5500.0	3.14	47.1%
20	5550.0	2.13	46.6%
21	5600.0	2.47	50.9%
22	5650.0	2.24	40.1%
23	5700.0	2.09	49.1%
24	5750.0	2.13	59.8%
25	5800.0	2.87	46.9%
26	5850.0	2.08	42.5%

2.4WIFI/11b

Channel No	TRP (dBm)	TIS (dBm)
1	12.36	-80.42
6	13.54	-80.32
11	13.73	-81.27

5.8WIFI/11a

Channel No	TRP (dBm)	TIS (dBm)
149	12.75	-69.53
157	12.25	-70.65
161	12.63	-71.78