

深圳美师傅科技有限公司

Shenzhen Mei Shifu Technology Co., Ltd.

天线调试报告

Antenna debugging report

日期: 2024年04月18日

Date: April 18, 2024

地址: 广东省深圳市宝安区西乡街道银田工业区汇潮大厦218

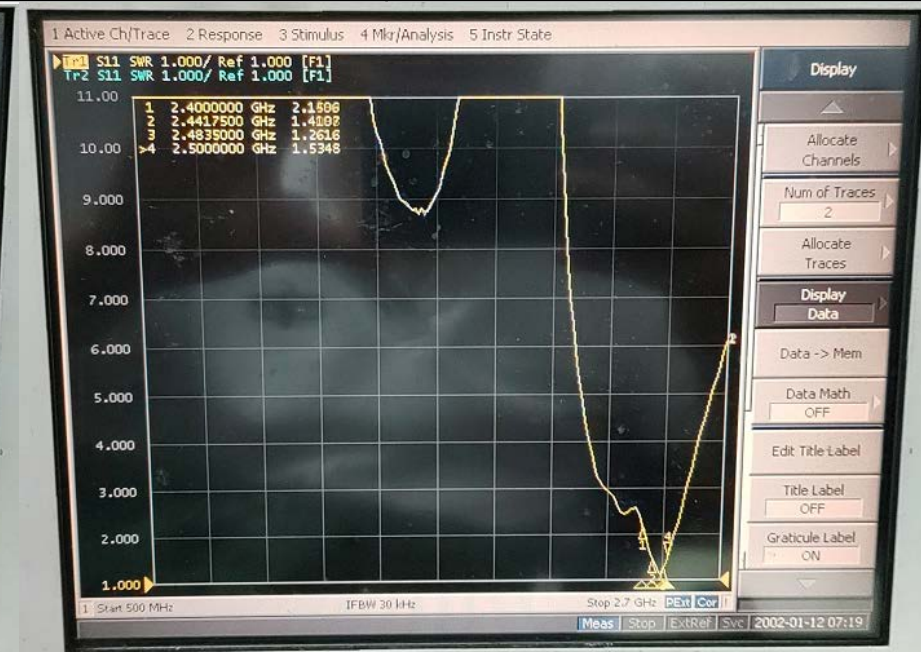
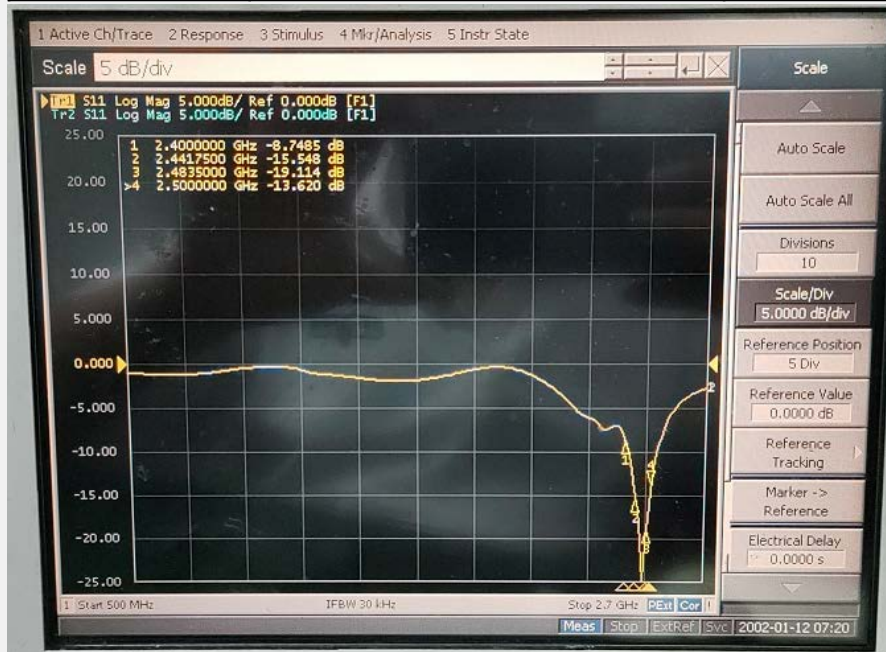
Address: 218 Huichao Building, Yintian Industrial Zone, Xixiang Street, Baoan District, Shenzhen, Guangdong Province

L/回波损耗及驻波比

L/ return loss and standing wave ratio

LTC ANT S11 parameter Summary

Band	2400-2500 (MHz)		
	2400	2450	2483
R. L (dB)	-8.7	-15.5	-19.1
VSWR	2.1	1.4	1.2

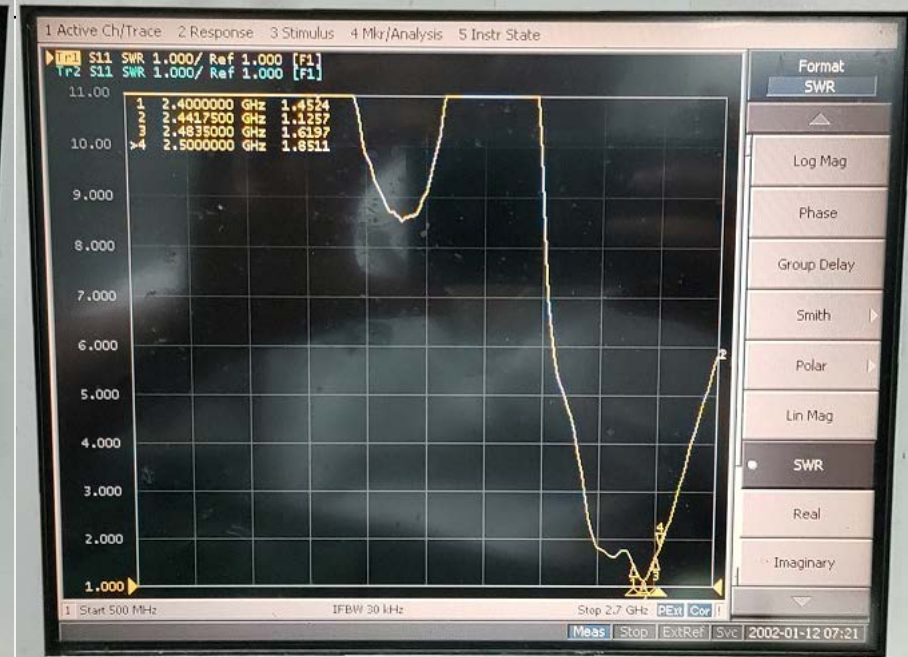
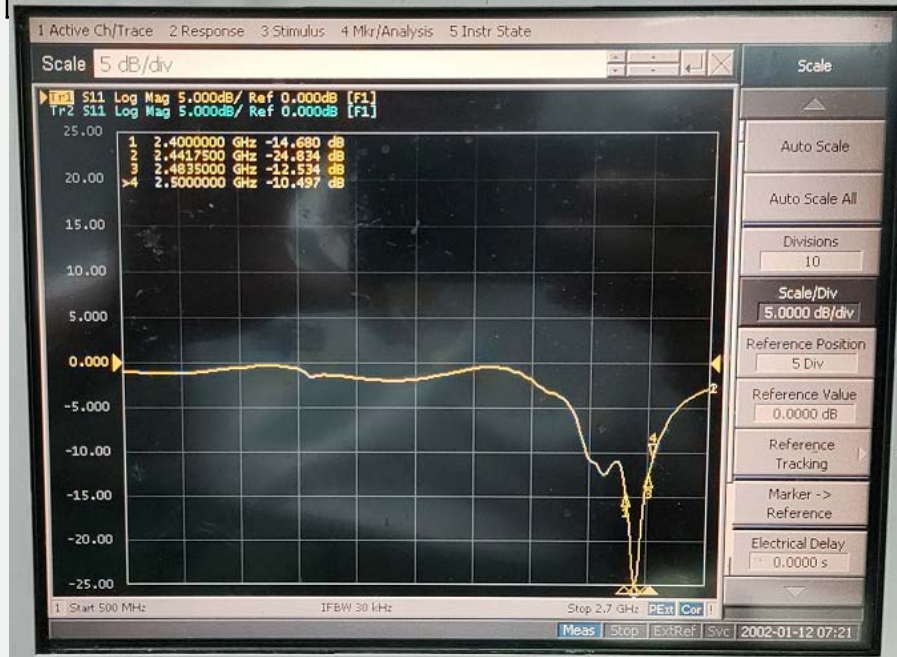


R/回波损耗及驻波比

R/ return loss and standing wave ratio

LTC ANT S11 parameter Summary

Band	2400-2500 (MHz)		
	2400	2450	2483
R. L (dB)	-14.6	-24.8	-12.5
VCWP	1 4	1 1	1 6

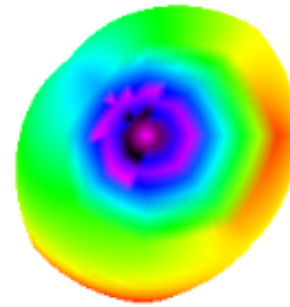


L/效率与增益

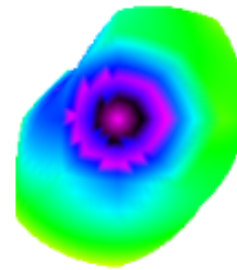
L/ Efficiency and gain

Freq (MHz)	Effi (%)	Effi (dB)	Gain (dBi)	Gain (dBd)
2400	46.14	-3.36	-1.28	-3.43
2410	42.39	-3.73	-1.51	-3.66
2420	39.91	-3.99	-1.54	-3.69
2430	38.23	-4.18	-1.48	-3.63
2440	38.65	-4.13	-1.3	-3.45
2450	39.7	-4.01	-1.02	-3.17
2460	38.09	-4.19	-1.14	-3.29
2470	34.35	-4.64	-1.38	-3.53
2480	35.45	-4.5	-1.12	-3.27
2490	35.77	-4.46	-1.02	-3.17
2500	34.67	-4.6	-1.12	-3.27

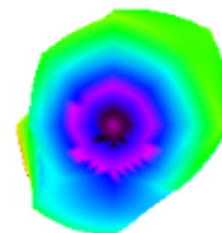
2400.000MHz



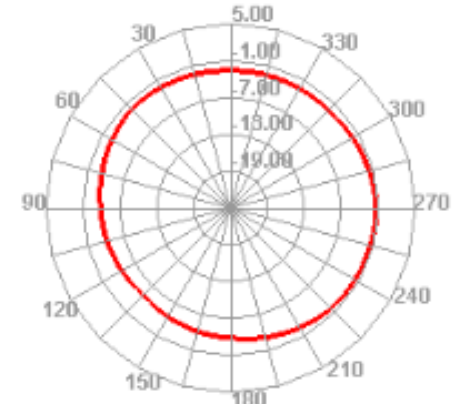
2450.000MHz



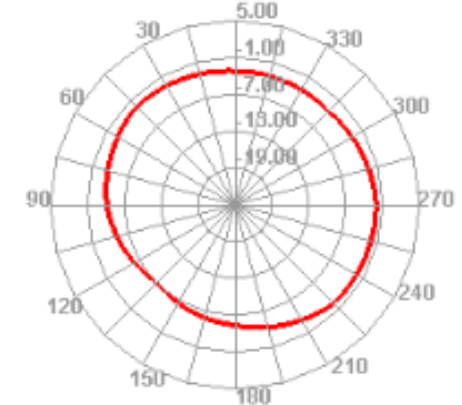
2500.000MHz



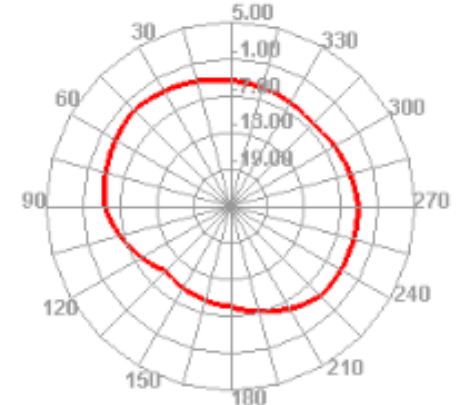
2400.000MHz H



2450.000MHz H



2500.000MHz H



Antenna View (2mm*1.6mm)



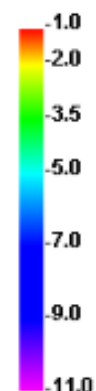
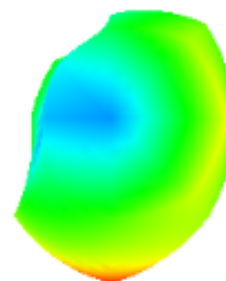
SMD ANT

R/效率与增益

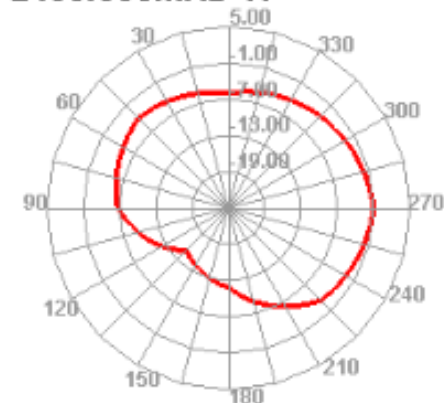
R/ Efficiency and gain

Freq (MHz)	Effi (%)	Effi (dB)	Gain (dBi)	Gain (dBd)
2400	32.11	-4.93	-1.01	-3.16
2410	30.03	-5.22	-1.32	-3.47
2420	30.92	-5.1	-1.18	-3.33
2430	31.24	-5.05	-1.16	-3.31
2440	31.54	-5.01	-1.02	-3.17
2450	34.87	-4.58	-0.63	-2.78
2460	33.5	-4.75	-0.88	-3.03
2470	33.58	-4.74	-1.19	-3.34
2480	34.84	-4.58	-1.29	-3.44
2490	32.46	-4.89	-1.57	-3.72
2500	33.94	-4.69	-1.44	-3.59

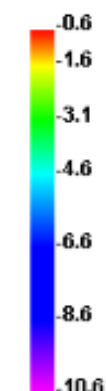
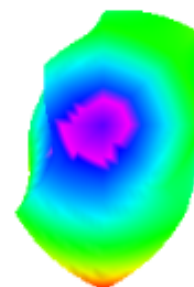
2400.000MHz



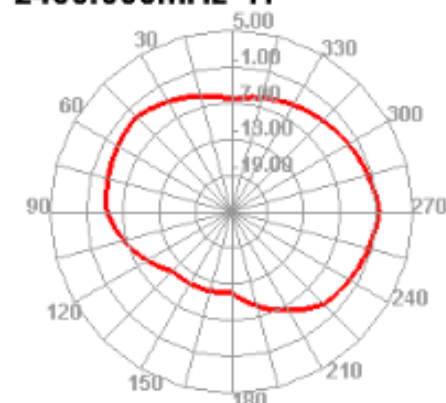
2400.000MHz H



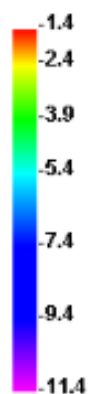
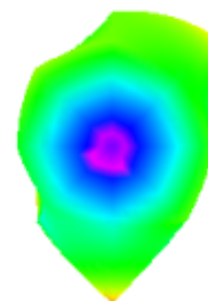
2450.000MHz



2450.000MHz H



2500.000MHz



2500.000MHz H

