

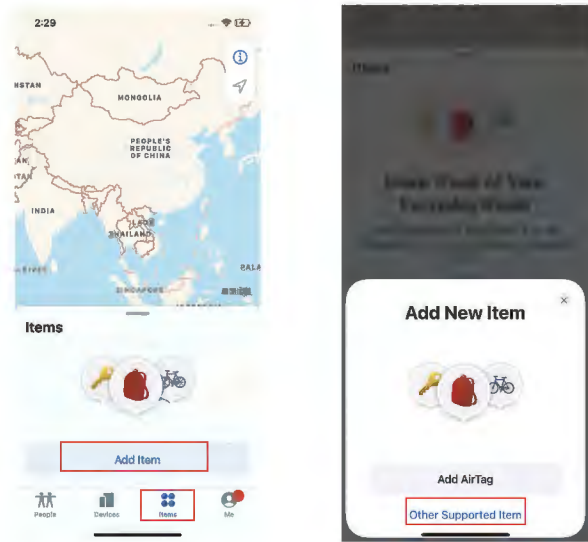
Find My User Manuel

Add Your iTag:

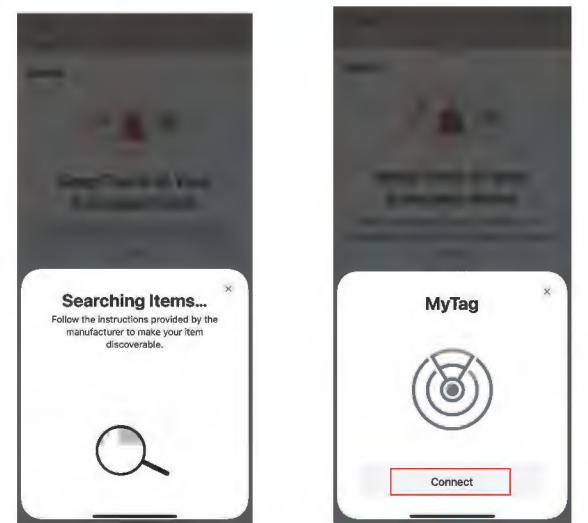
Stat the APP: Open Find My™ on your supported iPhone or iPad and allow notifications from the APP.

Connect iTag:

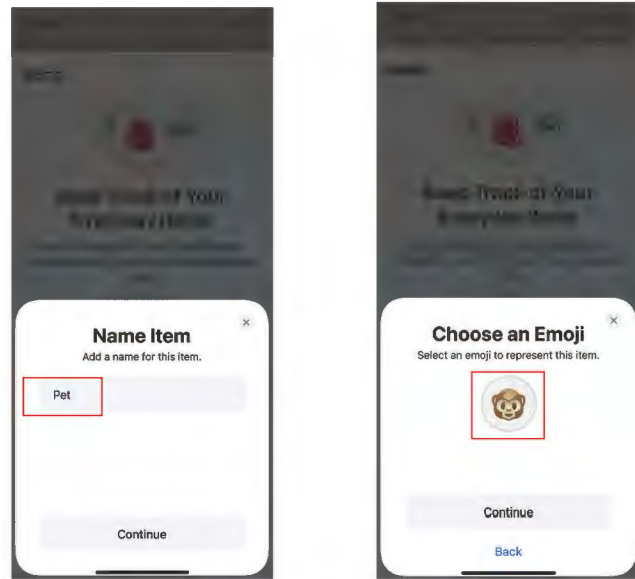
1. Press the button to power on iTag,
2. Select "Items" tab, then tap "Add Item", and next tap "Other supported items",



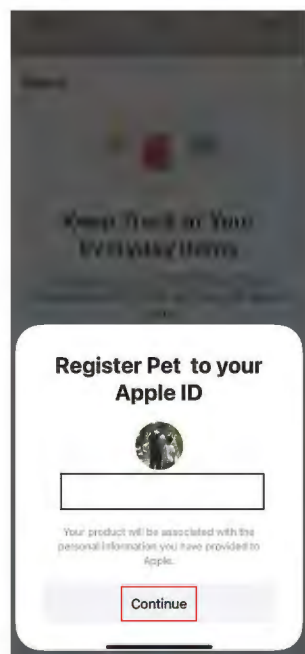
3. Once iTag is located, tap "Connect",



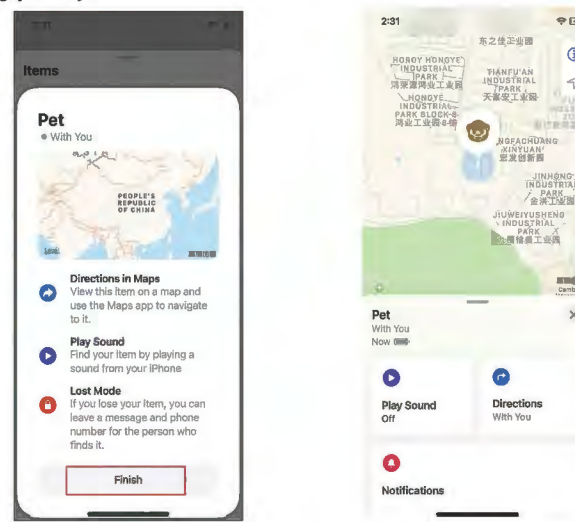
4. Choose a recognizable name and emoji for your iTag and tap "Continue",



5. Find My™ will ask for confirmation to add iTag to your Apple ID, and tap "Continue",

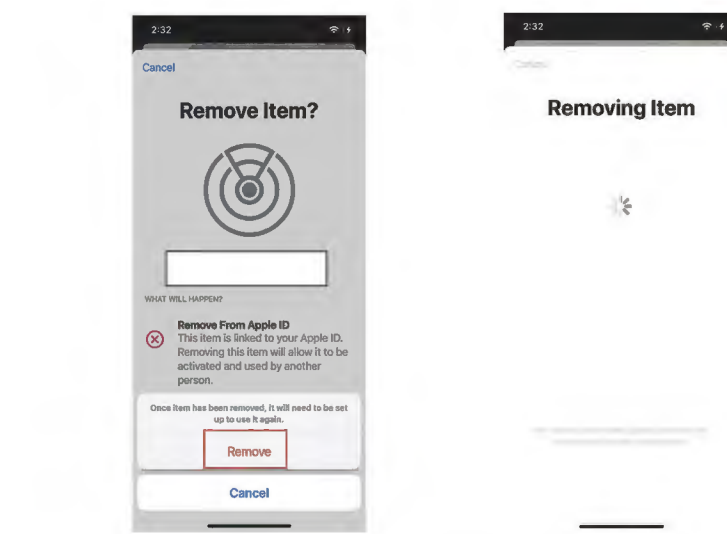
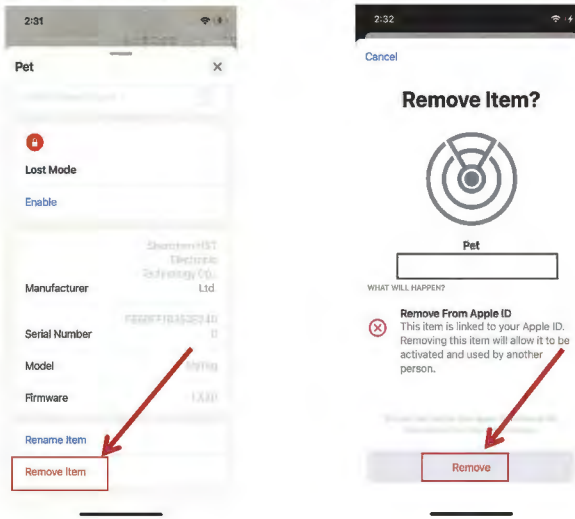


6. Tap "Finish" and your iTag will be set up and ready to be connected to whatever iTag you wish to locate, e.g. your keys.



Resetting iTag:

1. Open Find My™ APP and select "Items" tab,
2. Tap on your iTag from the list,
3. Please ensure "Lost Mode" is disabled,
4. Scroll to the bottom of the screen and tap "Remove Item",
5. A summary will open, then tap "Remove" to confirm.



Factory Reset Your iTag:

1. After successfully removing the iTag from Find My™ app, press the iTag's function button 4 times rapidly and then hold it a fifth time until you hear a ringing chime.
2. The iTag is now reset and ready to be paired to a new iPhone or iPad.

Locate Your iTag:

—Find iTag when It's Nearby:

1. Open Find My™ app and select the "Items" tab,
2. Tap on your iTag from the list,
3. Tap "Play Sound" to make your iTag Beep,
4. Tap "Stop Sound" to stop the beeps once you find it.

—Find iTag's last Known Location:

1. Open Find My™ app and select the "Items" tab,
2. Tap on your iTag from the list,
3. Your iTag's last known location will appear on the map,
4. To navigate to that last known location, tap "Direction" to open the Apple Maps app.

Find iTag Out of Range

—Enabling "Notify When Left Behind":

1. Open Find My™ app and select the "Items" tab,
2. Tap on your iTag from the list,
3. Under "Notifications" enable the "Notify When Left Behind" toggle,
4. You will receive a notification when you leave your iTag behind and it's no longer in range of your device.

—Enabling "Notify When Found":

1. Under "Notifications" enable the "Notify When Found" toggle,
2. When your iTag is seen by another Find My™ enabled device, you will receive a notification of its updated location.
3. Note: "Notify When Found" can only be activated when your iTag is out of range.

When Your iTag Is Lost

—Enabling "Lost Mode"

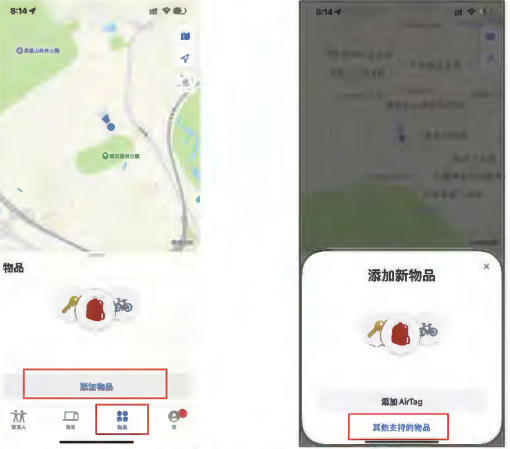
Find My防丢器操作说明

备注: Find My 防丢器需要使用安装 IOS 14.5 或更新版本的 iPhoneSE、iPhone 6s 或后续机型, 或 iPod touch (第七代); 安装 iPadOS 14.5 或更新版本的 iPad Pro、iPad (第五代或后续机型)、iPad Air 2 或后续机型、iPad mini 4 或后续机型。(和 Airtag 一样)

绑定操作:

- 第一步: 打开苹果手机的网络、蓝牙、定位服务。 确保头防丢器开机。
- 第二步: 找到苹果手机自带的“查找”APP并打开。

- 第三步: 选择“添加物品”, 然后选择“其他支持的物品”。



- 第四步: 等待手机搜索防丢器, 搜索到防丢器后, 点击“连接”。



- 第五步: 自定义设置防丢器的名称和表情符号, 根据个人喜好设置即可。



- 第六步: 将防丢器注册至您的 Apple ID, 并等待完成设置(注: 不同的系统版本, 这里显示的信息会不同。)



- 第七步: 连接成功后点击“完成”, 接着可通过点击“播放声音”确定是否连上了旁边的防丢器。



解除绑定操作: 点击最下面的“移除物品”, 然后点击“移除”, 接着继续点击“移除”, 等待“正在移除物品”, 结束后, “正在移除物品”的弹窗自动退出, 防丢器会播放解除提示音, 这样就完成解除操作了。



蘑菇头防丢器操作说明:

- (1) 关机: 长按按键至少3秒, 伴随有“滴滴”两声提示音;
- (2) 开机: 关机之后, 短按按键一下, 伴随有一连串开机提示音;
- (3) 把电池拆下来, 在装上电池: 默认开机, 伴随有开机提示音;
- (4) 防丢器本地解除绑定操作: 快速连续按按键4下, 然后第5下长按直到听到一连串提示音, 就完成了。此操作会清除本地配对信息, 同步复位;

防丢器的主要功能有:

1. 提示音的播放。
- A. 播放提示音的情况有(以下提示音都是不一样的声音):
 - a) 刚接上电池的时候;
 - b) 点击“查找”APP 页面内的“播放声音”选项;
 - c) 双击防丢器的按键;
 - d) 解除成功之后;
 - e) 开机;
 - f) 关机。

- B. APP 播放提示音的条件: 防丢器和手机要在蓝牙通信的距离内(在空旷且没有太多干扰信号的情况下, 连接距离40米左右)。
2. 使用“查找”APP 来跟踪个人物品。
3. 使用“查找”APP 定位丢失的设备或物品。

找不到你的设备?

- 1) 你可能没有打开“查找”。
- 2) 使用“查找”App 时, 如果距离最后一次向 Apple 发送设备位置已超过 7 天, 你将无法看到设备的位置。
- 3) 如果你使用的是 iCloud.com/find, 那么你在以下情况下将无法看到设备的位置: 你的设备已关机、电池电量耗尽, 或距离最后一次向 Apple 发送设备位置已超过 24 小时。

绑定注意事项:

可能会遇到的问题:

- 1、 将防丢器靠近手机, “查找”APP 搜索很久都没有搜到防丢器(超过15秒未搜索到的情况);
- 2、 出现“无法添加新物品”的情况(有几种不同的提示信息);
- 3、“查找”APP 能搜索到防丢器, 但是在输入信息、或者正在等待“即将完成设置”的过程中, 防丢器发出提示音;
- 4、 防丢器已经被其他苹果手机绑定了, 手机 APP 没有解绑, 防丢器本地也没有解绑, 这种情况下, APP 是搜不到防丢器的。
- 5、 防丢器已经被其他苹果手机绑定了。手机 APP 没有解绑, 但是防丢器本地解绑了, 这种情况下, APP 能搜到防丢器, 但是不能连接上, 只有当绑定该防丢器的手机, 在 APP 内解绑了, 才能连接使用该防丢器。

解决办法:

- a) 把防丢器的电池拆下来, 重新装上去, 或者换个新电池;
- b) 让防丢器开机;
- c) 防丢器开机后, 快速连续按防丢器按键 5 下, 第 5 下长按, 听到提示音;
- d) 把苹果手机“设置”里面的网络、蓝牙关掉, 在后台把“查找”APP 关掉, 等待 5 秒, 然后在重新打开手机的网络和蓝牙, 接着打开“查找”APP 重新搜索。

问题 2、3 的解决办法:

- a) 防丢器之前没有被连过, 是新的; 或者之前连过, 但是手机和防丢器都已经解除绑定;
- b) 防丢器拆掉电池, 重新装上去, 听到提示音, 说明正常开机;
- c) 快速连续按防丢器按键 5 下, 第 5 下长按, 听到提示音;
- d) 检查手机是否处于网络可用状态;
- e) 把手机放在网络良好的环境下;
- f) 关闭手机网络, “设置”里关闭蓝牙功能;
- g) 在后台把“查找”APP 关掉;
- h) 等待 5 秒, 重新打开手机的网络以及蓝牙;
- i) 打开“查找”APP 重新搜索, 连接防丢器;
- j) 如果还是出现无法连接的情况, 回到步骤 (e) 继续操作, 有时需要重复几次才能正常连接绑定。

解除绑定的注意事项:

1. 当手机与绑定的防丢器在蓝牙通信的范围内(可通过在 APP 内点击“播放声音”确定手机是否连上)的是将要解绑的防丢器)。

解除操作方式:

在“查找”APP 内解除绑定, 移除成功后, 防丢器会有解除成功的提示音, 此时防丢器可以被其他苹果手机正常使用。

1. Open Find My™ app and select the "Items" tab,
2. Tap on your iTag from the list,
3. Under "Lost Mode" tap "Enable",
4. A screen detailing Lost Mode will pop up, tap "Continue",
5. Enter your phone number or email address and tap "Next",
6. You may enter a message that will be shared with the person that finds your item,
7. Tap "Activate" to enable "Lost Mode",
8. Note: When "Lost Mode" is enabled, "Notify When Found" is automatically enabled.
9. Note: When "Lost Mode" is enabled, your iTag is locked and cannot be paired to a new iPhone or iPad.

Extras

—Replace The Battery

1. Slide the opening slider on the back of your iTag to carefully open the shells.
2. Replace the battery with a new CR2032 battery replacing it positive side up (text facing up).

—Unwanted Tracking

If any Find My network accessory separated from its owner is seen moving with you over time, you'll be notified in one of two ways:

1. If you have an iPhone, iPad or iPod touch, Find My will send a notification to your Apple device. This feature is available on iOS or iPadOS 14.5 or later.
2. If you don't have an iOS device or a smartphone, Find My network accessory that isn't with its owner for a period of time will emit a sound when it's moved. These features were created specifically to discourage people from trying to track you without your knowledge.

The Fine Print

This device complies with part 15 of the FCC Rules.Operation is subject to the following two conditions:(1)This device may not cause harmful interference,and (2) this device must accept any interference received,including interference that may cause undesired operation.NOTE:The manufacturer is not responsible for any radio or TV interference caused by unauthorized modifications or changes to this equipment.Such modifications or changes not expressly approved by the party responsible for compliance could void the user's authority to operate this device.The device has been evaluated to meet general RF exposure requirement.The device can be used in portable exposure condition without restriction.Federal Communication Commission(FCC)Radiation Exposure Statement Power is so low that no RF exposure calculation is needed. This equipment has been tested and found to comply with the limits for a Class B digital device,pursuant to part 15 of the FCC Rules.These limits are designed to provide reasonable protection against harmful interference in a residential installation.This equipment generates its own and can radiate radio frequency energy and,if not installed and used in-accordance with the instructions,may cause harmful interference to radio communications.However,there is no guarantee that interference will not occur in a particular installation.If this equipment does cause harmful interference to radio or television reception,which can be determined by turning the equipment off and on,the user is encouraged to try to correct the interference by one or more of the following measures:Reorient or relocate the receiving antenna.Increase the separation between the equipment and receiver.Connect the equipment into a outlet on a circuit different from that to which the receiver is connected.

Use of the Works with Apple badge means that a product has been designed to work specifically with the technology identified in the badge and has been certified by the product manufacturer to meet Apple Find My network product specifications and requirements.Apple is not responsible for the operation of this device or use of this product or its compliance with safety and regulatory standards.Use of the Works with Apple badge means that a product has been designed to work specifically with the technology identified in the badge and has been certified by the product manufacturer to meet Apple Find My network product specifications and requirements.Apple is not responsible for the operation of this device or use of this product or its compliance with safety and regulatory standards.Apple Find My,Apple Watch,Find My,iPhone,iPad,iPad OS,iPod touch,Mac,mac OS and Watch OS are trademarks of Apple Inc.iOS is a trademark of Cisco and is used under license.

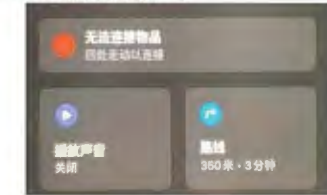
2. 当手机与绑定的防丢器超过了蓝牙通信的距离。

解除操作方式:

- 第一步, 在“查找”APP 内移除绑定的防丢器;
 - 第二步, 防丢器通过本地解除绑定操作, 解除(快速连续按防丢器按键5下, 第5下长按直到听到复位提示音)。
- 即手机 APP 要解绑, 防丢器本地也要解绑, 两端单独成功解绑之后, 防丢器才能被其他苹果手机正常使用。如果是单独一方成功解绑, 另一方没有成功解绑, 防丢器是不能被其他苹果手机正常使用。

其他注意事项:

- 1、“查找”APP 绑定和解绑的时间, 有时快, 有时慢, 原因与手机网络速度、手机本身的运行流畅性、以及防丢器的信号强度有关。
- 2、 更换电池不影响防丢器的正常使用, 如果换了电池后, 手机和防丢器在蓝牙通信的范围内, 在 APP 点击“播放声音”出现“无法连接物品”的情况, 那么多次点击 APP 里面的“播放声音”选项, 此时防丢器会播放提示音, 并且“无法连接物品”的提示也会消失。原因是手机和防丢器要连接上之后, 才能正常播放声音。



- 3、 防丢器位置信息和时间更缓慢, 或者不更新的原因:

- a) 防丢器可能被其他人本地解绑;
 - b) 防丢器的电池可能没电;
 - c) 防丢器可能被其他人关机或者拆掉电池;
 - d) 绑定防丢器的手机的网络, 蓝牙, 位置服务可能没有打开;
 - e) 防丢器可能被 APP 判断为用作跟踪他人使用(苹果 APP 算法决定);
 - f) 防丢器可能在一个信号被屏蔽的空间里, 不能和其他手机正常通信;
 - g) 防丢器周围可能没有其它苹果手机, 所以上报不了位置信息。
- 4、 如果防丢器接上电池后, 一直发出“滴滴滴”声或者不发出声音, 说明电池没电了。换上新电池后, 如果没有开机提示音, 说明防丢器可能损坏了。
 - 5、 由于手机和防丢器是靠蓝牙通信的, 所以他们之间的位置误差有几米, 不像 Airtag 那样有几厘米的位置误差, 因为 Airtag 有 UWB 模块。近距离的情况下, 可通过在 APP 内点击“播放声音”来确定防丢器的具体位置。
 - 6、 当手机与防丢器刚完成连接时, 立刻点击 APP 内的“播放声音”选项, 有时会提示“无法连接物品”, 防丢器也不会播放声音, 这个是正常的。过几秒在点击 APP 内的“播放声音”选项, 防丢器就可以正常播放声音了。手机与防丢器刚完成连接后, 要等几秒钟, 再对防丢器进行操作, 这样就不会有这种问题了。
 - 7、 当手机与防丢器刚完成连接时, 立刻点击 APP 内的“有可用更新”选项, 有时 APP 页面会刷新一下, 但是没有弹出“更新”弹窗, 这个是正常的。过几秒在点击 APP 内的“有可用更新”选项, 防丢器就可以正常弹出“更新”弹窗了。手机与防丢器刚完成连接后, 要等几秒钟, 在对防丢器进行操作, 这样就不会有这种问题了。

FCC Warning

15.19 Labeling requirements.

This device complies with part 15 of the FCC Rules. Operation is subject to the following two conditions: (1) This device may not cause harmful interference, and (2) this device must accept any interference received, including interference that may cause undesired operation.

15.21 Information to user.

Any Changes or modifications not expressly approved by the party responsible for compliance could void the user's authority to operate the equipment.

15.105 Information to the user.

Note: This equipment has been tested and found to comply with the limits for a Class B digital device, pursuant to part 15 of the FCC Rules. These limits are designed to provide reasonable protection against harmful interference in a residential installation. This equipment generates uses and can radiate radio frequency energy and, if not installed and used in accordance with the instructions, may cause harmful interference to radio communications. However, there is no guarantee that interference will not occur in a particular installation. If this equipment does cause harmful interference to radio or television reception, which can be determined by turning the equipment off and on, the user is encouraged to try to correct the interference by one or more of the following measures:

- Reorient or relocate the receiving antenna.
- Increase the separation between the equipment and receiver.
- Connect the equipment into an outlet on a circuit different from that to which the receiver is connected.
- Consult the dealer or an experienced radio/TV technician for help.

FCC RF Radiation Exposure Statement:

1. This Transmitter must not be co-located or operating in conjunction with any other antenna or transmitter.
2. This equipment complies with RF radiation exposure limits set forth for an uncontrolled environment.

This equipment should be installed and operated with minimum distance 5mm between the radiator and your body.