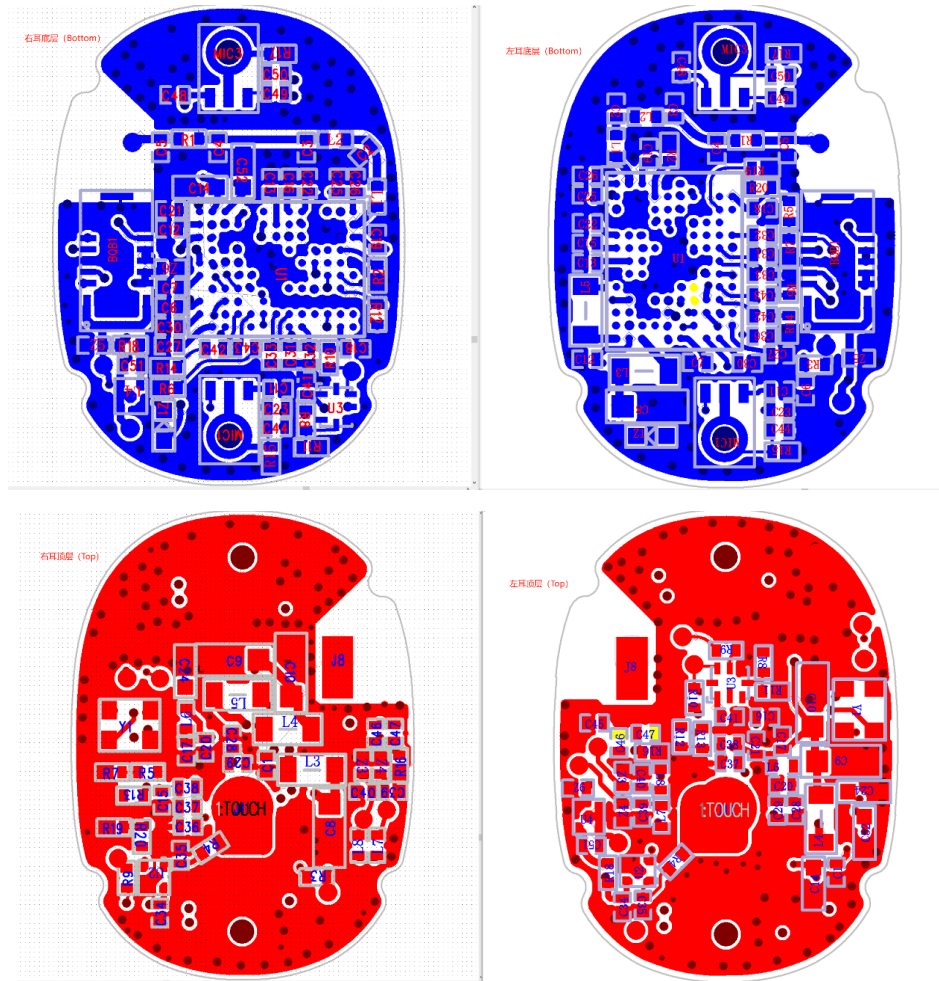


Product Discrepancy Declaration



Link by Eargo is wireless Bluetooth TWS earbuds, a pair of earbuds are divided into left and right earbuds, the appearance is different, but the internal PCBA circuits are identical. It's because the earbud structure is mirrored, resulting in PCBA appearance differences.

For both L earbud and R earbud, the schematic diagrams are the same, all electronics components are the same, and the

hardware functions are the same. Just exist the components placement difference, and no other difference any more.

DocuSigned by:
Monica Barrett
D2CCCEAAD7164B2...

<Signature>

Name: Monica Barrett

Title: Sr.DirectorRA/QA

Company: Eargo,Inc.