

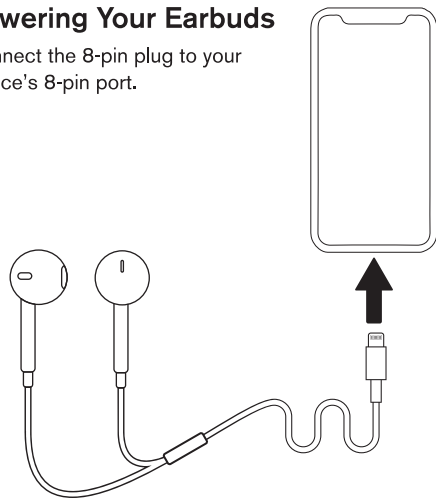
Bluetooth®
8-Pin Earbuds
User Guide

Say Hello to Your Bluetooth® 8-Pin Earbuds

The Bluetooth® 8-Pin Earbuds include a built-in mic and volume control for listening to music, taking calls, and activating a voice assistant. Made with higher-quality ergonomic ABS plastic casing to fit your ear canals perfectly for hours of comfortable use.

Powering Your Earbuds

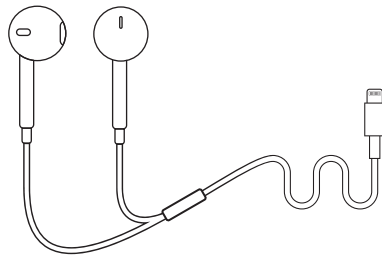
Connect the 8-pin plug to your device's 8-pin port.



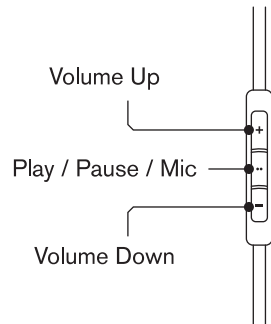
Pairing Your Earbuds

Go to Settings on your iPhone®, tap Bluetooth® and connect to the earphones.

Earphones will automatically connect to your iDevice in the future.



Control Panel



Any changes or modifications not expressly approved by the party responsible for compliance could void the user's authority to operate the equipment.

This device complies with part 15 of the FCC Rules. Operation is subject to the following two conditions:

1. This device may not cause harmful interference, and
2. This device must accept any interference received, including interference that may cause undesired operation.

Note: This equipment has been tested and found to comply with the limits for a Class B digital device, pursuant to part 15 of the FCC Rules. These limits are designed to provide reasonable protection against harmful interference in a residential installation. This equipment generates, uses and can radiate radio frequency energy and, if not installed and used in accordance with the instructions, may cause harmful interference to radio communications. However, there is no guarantee that interference will not occur in a particular installation. If this equipment does cause harmful interference to radio or television reception, which can be determined by turning the equipment off and on, the user is encouraged to try to correct the interference by one or more of the following measures:

- Reorient or relocate the receiving antenna.
- Increase the separation between the equipment and receiver.
- Connect the equipment into an outlet on a circuit different from that to which the receiver is connected.
- Consult the dealer or an experienced radio/TV technician for help.

FCC RF exposure:

This equipment complies with FCC radiation exposure limits set forth for an uncontrolled environment .

Frequency Response: 20Hz-20kHz
Impedance: 32Ω
Sensitivity: 105±3dB
Cable Length: 47.2in.

FCC ID: 2BDF9-YU1257

For questions or concerns email us at info@youse.com. Distributed by Youse, LLC. 10 West 33rd St. Suite 520, New York, NY 10001. Youse® is a trademark of Youse, LLC. Designed by Youse in New York. Made in China.

One-year limited warranty from date of purchase against defects in materials and workmanship.

