

WE APPRECIATE FEEDBACK!

Please allow our customer service team to help with any issues before you leave a review.



/atomismartino



/atomi_smart



@atomi.smart

Need assistance?



**DO NOT RETURN THIS
PRODUCT TO THE STORE**

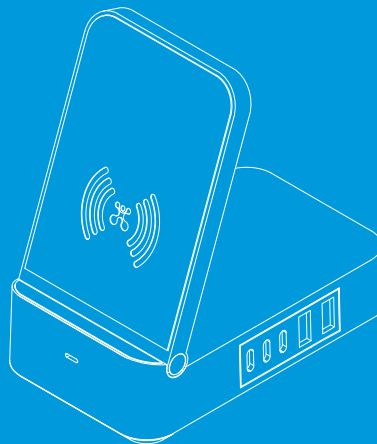
Call 1-800-757-1440
Mon-Fri 9:00 a.m. - 5:00 p.m. EST (U.S.)
or email us at info@atomiusa.com



55W Wireless Charging Station

15W Wireless Charger + 20W PD Port +
Dual USB-C Ports + Dual Smart USB Ports

User Guide



Date Code: 09/23

Thank you for purchasing the Atomi

55W Wireless Charging Station

Designed to power almost any device, Atomi's

55 Wireless Charging Station replaces bulky plugs and unruly wires on your desk. Adjust the wireless charging pad up to 65° so you can view your phone screen even while it charges. Plus, the charger features an ultra-powerful 20W PD port, dual USB-C ports, and dual Smart USB ports to provide the most efficient charge possible for tablets, phones, and more.

What's Inside

55W Wireless Charging Station

AC Power Cable

Specifications

Model : AT1705

Input: 100-240V~ 50/60Hz 1.2A

Wireless Output: 15W

PD Output: 5V=3A, 9V=2.22A, 12V=1.67A, 20W max.

Type-C+USB Output: 5V=2.4A (Each Port)

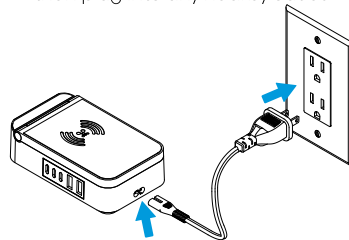
Total 5V=4A max.

Total Output: 55W

Charging Your Devices

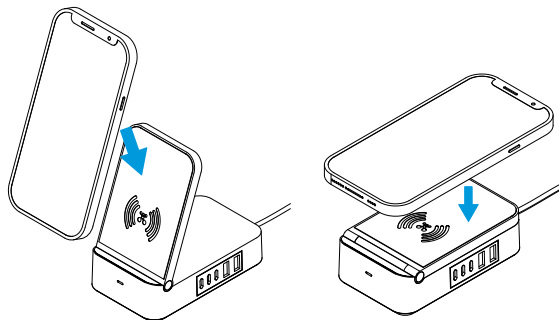
1

Connect the included AC cable to the port on the back of your Charge Station, then plug into any nearby outlet.



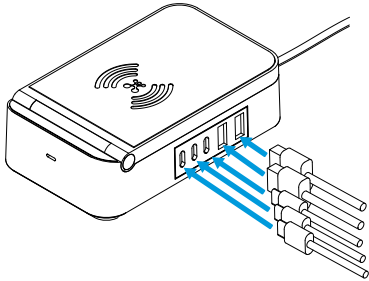
2

To charge wirelessly, place your device on the top of the Charge Station in the position of your choice. Charging will begin on contact.



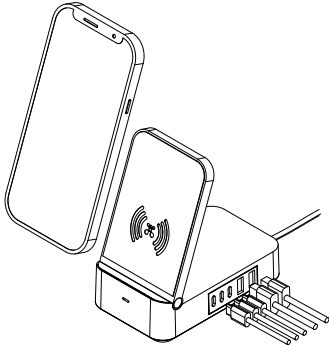
3

To use the charging ports, connect to the Charge Station using the cables provided with your respective devices.



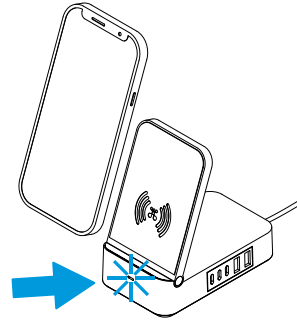
4

Charge up to 6 devices all at once.



Charge Indicator Light

The indicator light shows the charging status for the wireless charging.



Blue solid light means the device is charging.



Blinking light means device is not charging because the phone is not properly aligned with the wireless charging pad.



If the indicator light is off, it means there is no charging.



When the device is fully charged, the indicator light will change to green and turn off after 30s.

This device complies with Part 15 of the FCC rules. Operation is subject to the following two conditions: 1) this device may not cause harmful interference, and 2) this device must accept any interference received, including interference that may cause undesired operation.

Note: This equipment has been tested and found to comply with the limits for a Class B digital device, pursuant to part 15 of the FCC Rules. These limits are designed to provide reasonable protection against harmful interference in a residential installation.

This equipment generates uses and can radiate radio frequency energy and, if not installed and used in accordance with the instructions, may cause harmful interference to radio communications. However, there is no guarantee that interference will not occur in particular installation. If this equipment does cause harmful interference to radio or television reception, which can be determined by turning the equipment off and on, the user is encouraged to try to correct the interference by one or more of the following measures:

--Reorient or relocate the receiving antenna.

--Increase the separation between the equipment and receiver.

--Connect the equipment into an outlet on a circuit different from that to which the receiver is connected.

--Consult the dealer or an experienced radio/TV technician for help.

Changes or modifications not expressly approved by the party responsible for compliance could void the user's authority to operate the equipment. Radiation Exposure Statement

The FCC certification of this device refers to RF exposure testing performed in typical operating conditions, where a person is no closer than 20 centimeters from the device surface at all times, except for non-repetitive patterns with transient time intervals in the order of a second. Only in the stated conditions, the device is shown to fully comply with the FCC RF Exposure requirements of KDB 447498.

Safety Information

1. Read these instructions carefully for best use.
2. DO NOT use the Charge Station near water or expose it to rain or moisture.
3. DO NOT use the Charge Station near open flames, such as candles, heat sources, radiators and stoves.
4. Only clean the Charge Station with a dry cloth.
5. Caution: Risk of electric shock. Grounding continuity must be maintained.
6. For connection to a power supply not in the U.S.A., use an attachment plug adapter of the proper configuration for the power outlet, if needed.
7. Please check prior use, if output voltage and current of the power supply is suitable for the product.
8. Children should be supervised to ensure that they do not play with the appliance.

For questions or concerns, email us at info@atomiusa.com

Manufactured and marketed by Atomi Inc.

10 West 33rd St., New York, NY 10001

atomi™ is a trademark of Atomi Inc.

Designed by Atomi in New York. Made in China

Three-year limited warranty from the date of purchase against defects in material and workmanship.