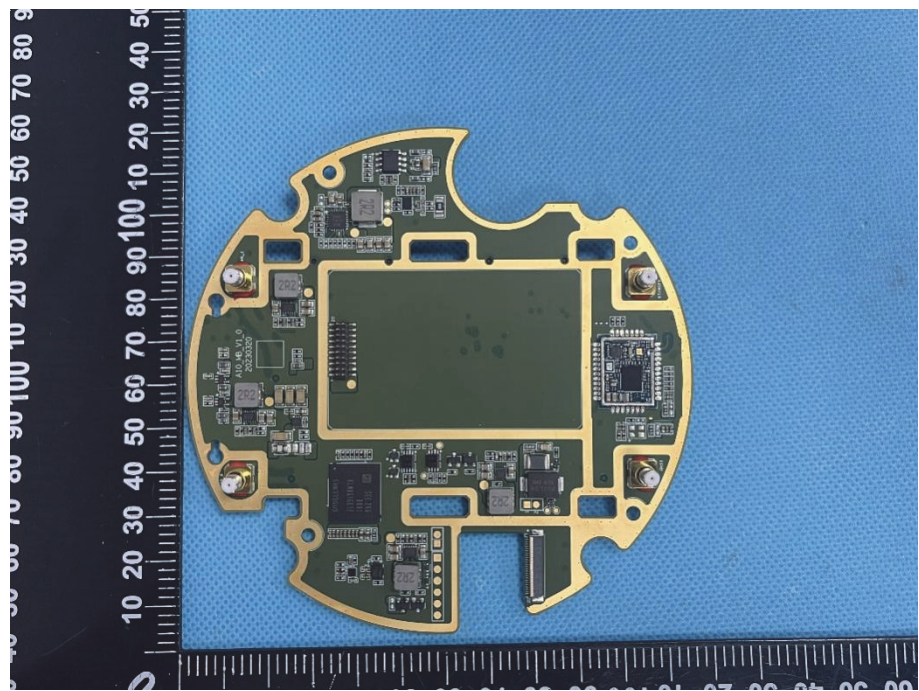
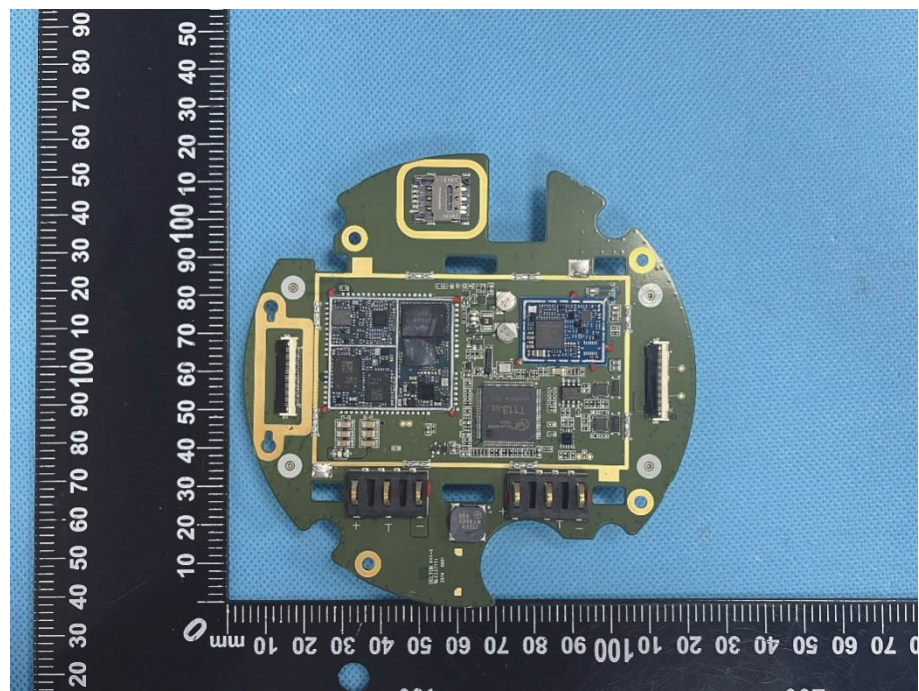
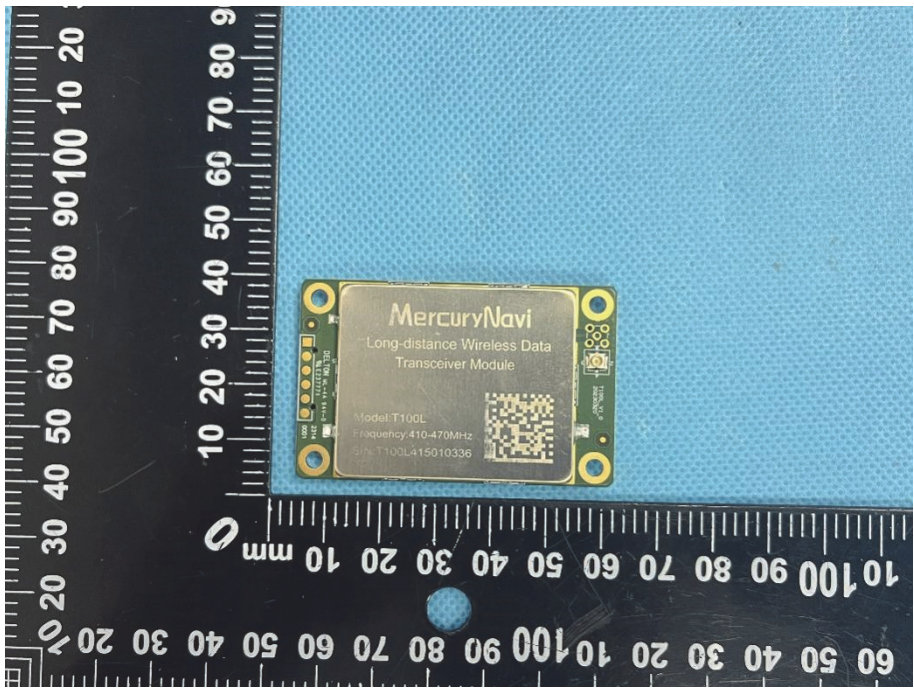
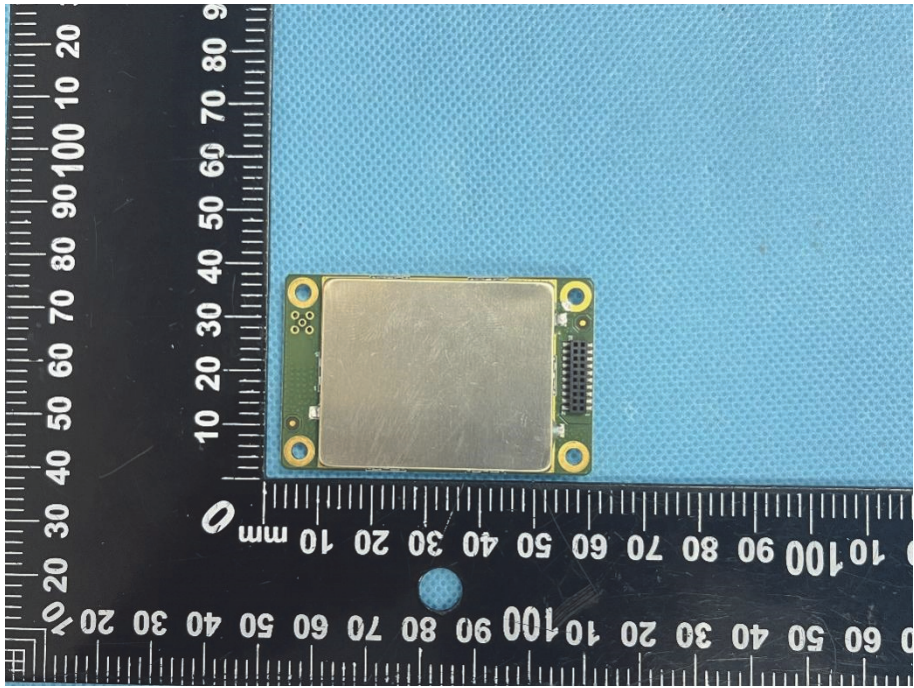


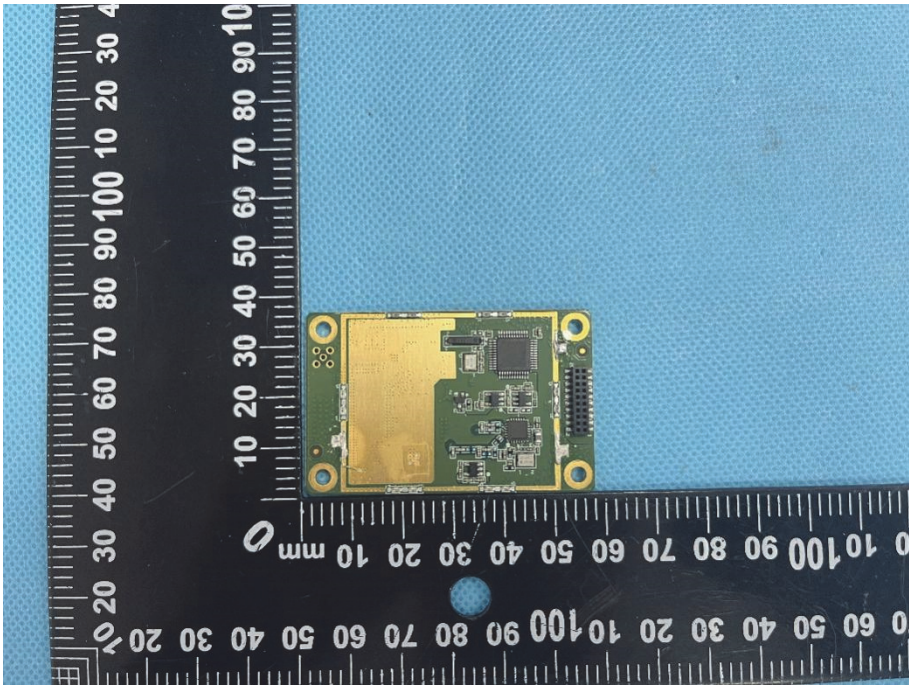
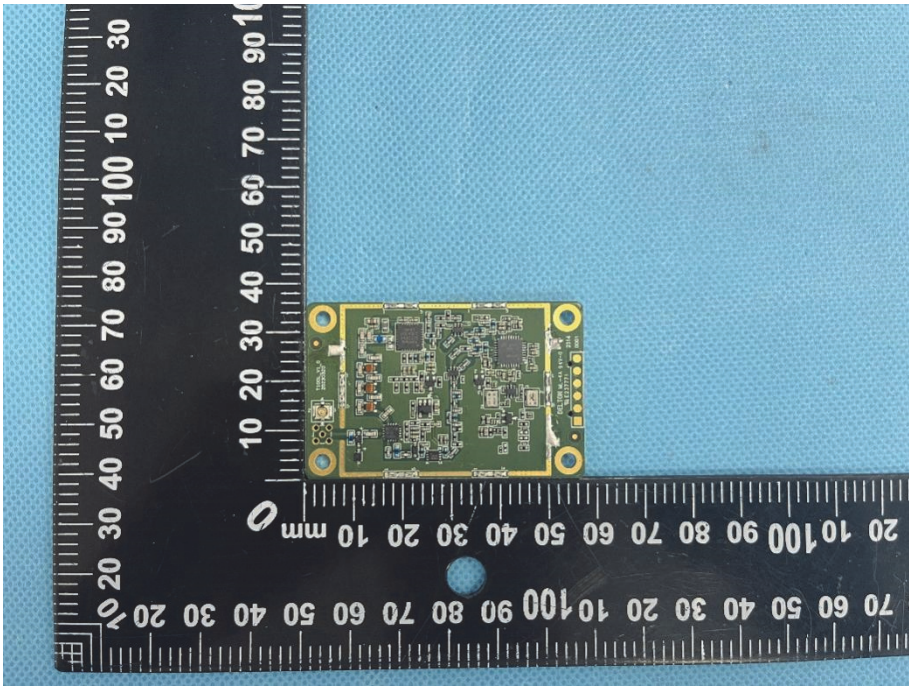
**Solder
Board-Component
View 11**

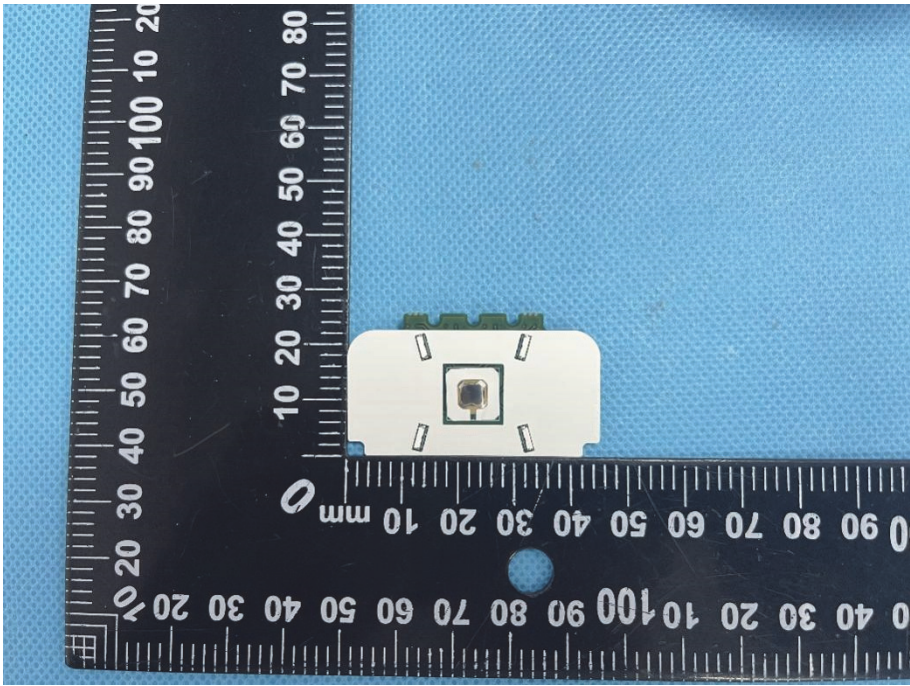


**Solder
Board-Component
View 12**



<p>Solder Board-Component View 13</p>	 <p>A photograph of a MercuryNavi Long-distance Wireless Data Transceiver Module. The module is rectangular with a gold-colored surface and is placed on a blue textured background. A black ruler with white markings is positioned to the left and bottom of the module for scale. The ruler shows measurements in millimeters, with the module's length being approximately 60 mm and its width approximately 25 mm. The module's surface features the following text: "MercuryNavi", "Long-distance Wireless Data Transceiver Module", "Model: T100L", "Frequency: 410-470MHz", and "SN: T100L415010336". There is also a QR code on the module. The module has four gold-colored circular pads at the corners and a connector on the right side.</p>
<p>Solder Board-Component View 14</p>	 <p>A photograph showing the reverse side of the MercuryNavi module. The module is placed on the same blue textured background as in View 13. A black ruler with white markings is positioned to the left and bottom of the module for scale. The ruler shows measurements in millimeters, with the module's length being approximately 60 mm and its width approximately 25 mm. The reverse side of the module is mostly obscured by a large, rectangular, silver-colored metal shield. The shield has a small circular hole in the center. The module's connector is visible on the right side, and the four gold-colored circular pads are visible at the corners.</p>

<p>Solder Board-Component View 15</p>	 A photograph of a small green printed circuit board (PCB) component, identified as View 15. The board is rectangular and features a large, prominent gold-colored rectangular area on its top surface. It has four circular mounting holes, one at each corner. The board is placed on a blue textured surface next to a black L-shaped ruler with white markings in millimeters. The ruler shows the board is approximately 40 mm wide and 25 mm high.
<p>Solder Board-Component View 16</p>	 A photograph of the same green PCB component, identified as View 16. This view shows the reverse side of the board, revealing various electronic components such as integrated circuits, resistors, and capacitors. The board has four circular mounting holes at the corners. It is placed on the same blue textured surface next to the same black L-shaped ruler. The ruler indicates the board's dimensions are approximately 40 mm wide and 25 mm high.

<p>Solder Board-Component View 17</p>	
<p>Solder Board-Component View 18</p>	