

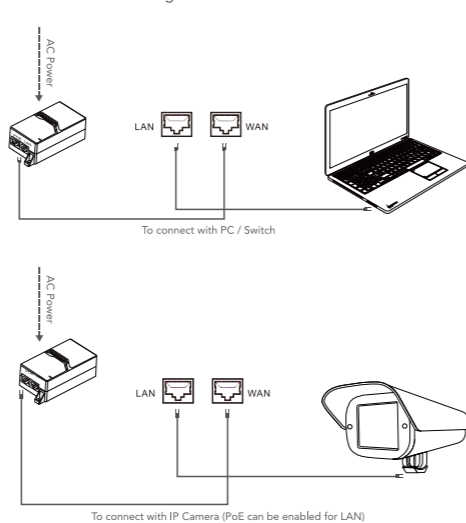
Professional Wi-Fi  
CPE Network Bridge  
Quick Start Guide



1 Device Setting

1.1 AIVO Network's ANCP3005Q is a professional Wi-Fi communication device, which enables connection from existing LAN to remote location using the latest wireless technology. We strongly recommend professional installation.

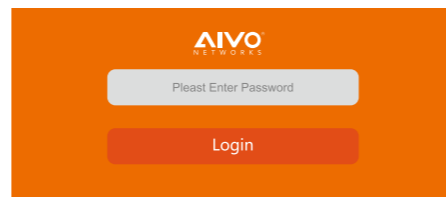
1.2 Installation Diagrams



Wi-Fi CPE Network Bridge  
Model ANCP3005Q

2 Quick Setup

2.1 Connect the computer using an Ethernet cable to LAN port of the CPE device. Make sure computer is set to the same IP range as the CPE device. (i.e. 192.168.10.x) Open the internet browser and type default IP address 192.168.10.1 to access management interface. Default password should be "admin"

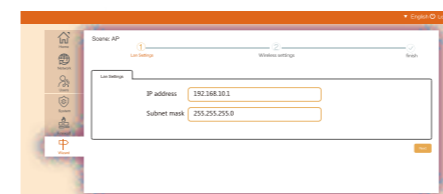


2.2 AIVO ANCP3005Q can operate as bridge, AP, Repeater and Router mode. In order to use AIVO ANCP3005Q as wireless bridge for IP cameras or to connect networks together, we recommend to use two ANCP3005Q devices for the maximum transfer distance and speed.



3 AP Mode

3.1 AIVO ANCP3005Q can be used as an outdoor AP. For AP mode, select Wizard > AP Mode in the menu on the left side. Type the IP address to preference. IP address must be within the same network as Router/Gateway's LAN IP range and must not conflict with any other devices. Click Next after done.



3.2 Type the desired SSID name and password for wireless network. (For some dual band device, it may requires 2 SSID names. We recommend to use different names for those 2 networks. i.e. AIVO\_2.4G and AIVO\_5G)

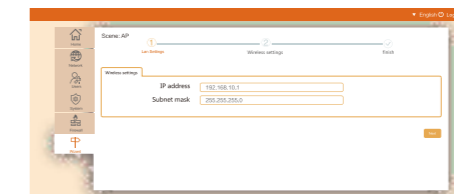


4 Bridge Mode

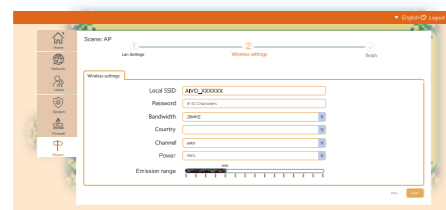
4.1 For bridge mode, Wizard > AP Mode in the menu on the left side. Choose Access Point for transmitting mode or Station for receiving mode. For the maximum performance, WDS feature on the router must be enabled.



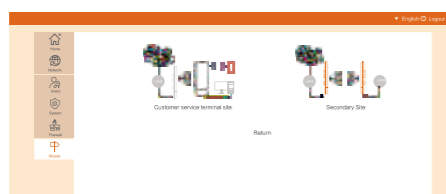
4.2 For Access Point mode, select Access Point option and type in preferred IP address for the CPE unit.



4.3 Type the desired SSID name and password, then adjust transmitting distance to your preferred range. Please note, longer distance in range will narrow down the beam pattern thus less side to side coverage.

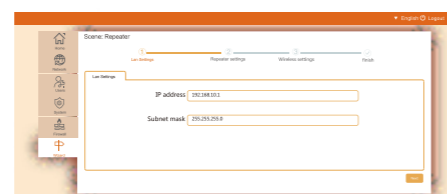


4.4 For setting up CPE as receiver, select Station mode at the first menu. Under station mode there are two options: Client Site and Secondary Site. For most IP camera settings, use Client Site mode. For bridging two networks together, use Secondary Site mode.

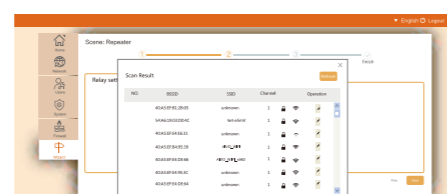


5 Repeater Mode

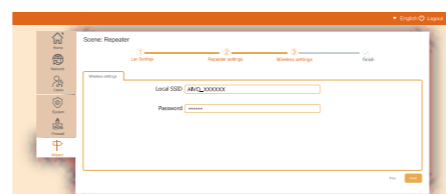
5.1 AIVO ANCP3005Q can operate as WiFi repeater/extender. For repeater mode, choose Wizard > Repeater Mode in the menu on the left side. Type in preferred IP address for the CPE unit. Make sure IP address for the CPE is in the same network IP range with the router/gateway.



5.2 Click Scan to find all the available WiFi networks. Select the desired wireless network from the list, then click # . Type password for the selected wireless network and click next to continue.

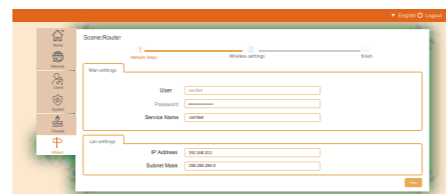


5.3 Type the desired SSID name and password for repeater/extender's wireless network.



6 Router Mode

6.1 For Router mode, Wizard > Router Mode in the menu on the left side. Choose the proper setting for your Internet Service Provider. (PPPOE, Static, or DHCP)



Copyright Information

**Statement**  
Big Cart Corporation Company all rights reserved.

Without our official written permission, no unit or individual shall be copied, reproduced, transcribed or translated in part or whole book. In any form or by any means (electronic, mechanical, printing, recording or other possible means) or for the propagation of goods any commercial, profitable purposes.

AIVO® is the registered trademark of Big Cart Corporation Company in California, United States. All other trademarks or registered trademarks mentioned in this document, by respective owners.

Product specifications and information mentioned in this manual are for reference on subject to updates without notice. Unless there are other special agreed, this manual is used only as a user guide. All statements, information, etc. are not constitute any form of guarantee

正面

反面

黑色线框为刀模，红色虚线为折叠线，无需印刷。

<p>深圳市四海众联网络科技有限公司 Shenzhen Four Seas Global Link Network Technology</p>				<p>图纸编号</p> <p>CF-E312A 美国AIVO(何亚娟) 软件说明书V1</p>	<p>印刷颜色</p> <p>黑白正反面印刷</p>	<p>制图</p> <p>段志飞</p>
<p>产品型号</p> <p>CF-E312A</p>	<p>物料名称</p> <p>说明书</p>	<p>物料材质</p> <p>157g铜版纸, 折叠</p>	<p>成品尺寸</p> <p>350*105mm 折叠后尺寸: 70*105mm</p>	<p>版本</p> <p>V1</p>	<p>审核</p>	
<p>客户代码</p> <p>美国AIVO(何亚娟)</p>	<p>语言</p> <p>英文</p>			<p>发行日期</p> <p>2017-7-14</p>	<p>核准</p>	

#### FCC Warning

This device complies with part 15 of the FCC rules. Operation is subject to the following two conditions: (1) this device may not cause harmful interference, and (2) this device must accept any interference received, including interference that may cause undesired operation.

Changes or modifications not expressly approved by the party responsible for compliance could void the user's authority to operate the equipment.

NOTE: This equipment has been tested and found to comply with the limits for a Class B digital device, pursuant to part 15 of the FCC Rules. These limits are designed to provide reasonable protection against harmful interference in a residential installation. This equipment generates uses and can radiate radio frequency energy and, if not installed and used in accordance with the instructions, may cause harmful interference to radio communications. However, there is no guarantee that interference will not occur in a particular installation. If this equipment does cause harmful interference to radio or television reception, which can be determined by turning the equipment off and on, the user is encouraged to try to correct the interference by one or more of the following measures:

- Reorient or relocate the receiving antenna.
- Increase the separation between the equipment and receiver.
- Connect the equipment into an outlet on a circuit different from that to which the receiver is connected.
- Consult the dealer or an experienced radio/TV technician for help.

#### Radiation Exposure Statement

This equipment complies with FCC radiation exposure limits set forth for an uncontrolled environment. This equipment should be installed and operated with minimum distance 20cm between the radiator and your body.