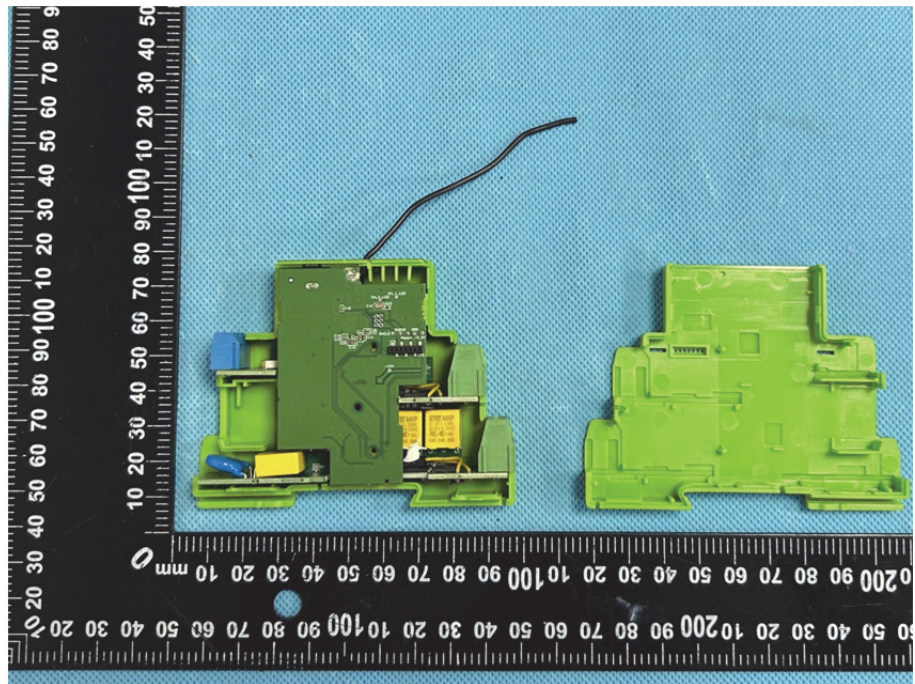
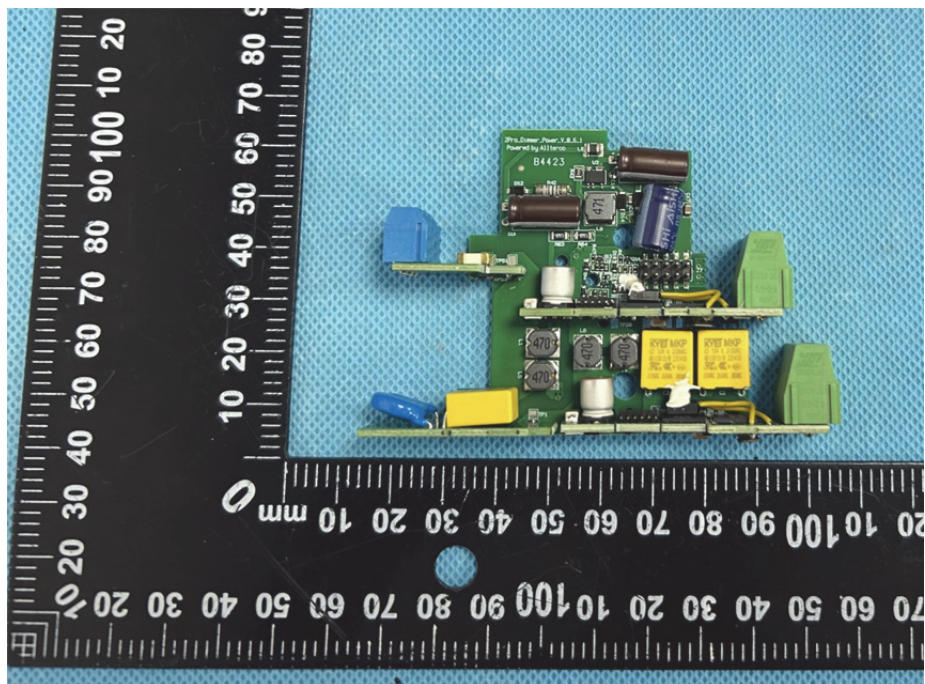


EXHIBIT 3 - EUT INTERNAL PHOTOGRAPHS

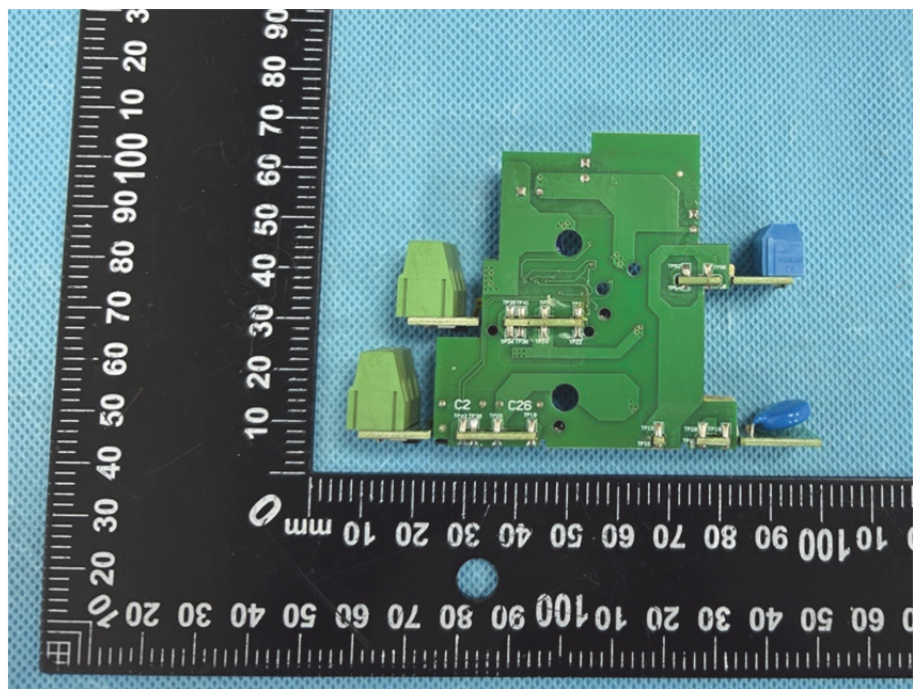
EUT Housing and Board View 1



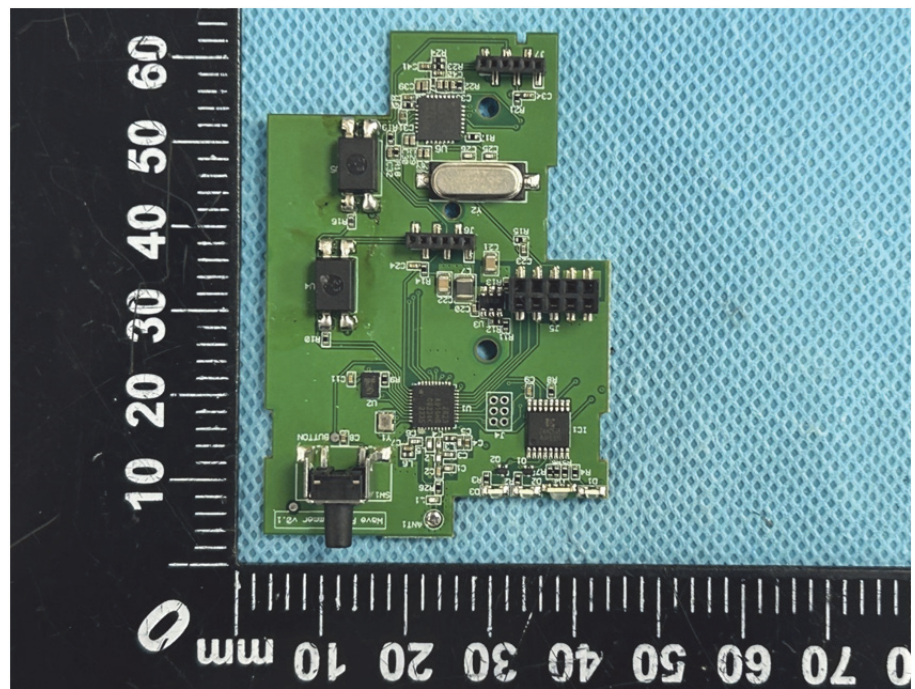
Solder Board-Component View 1

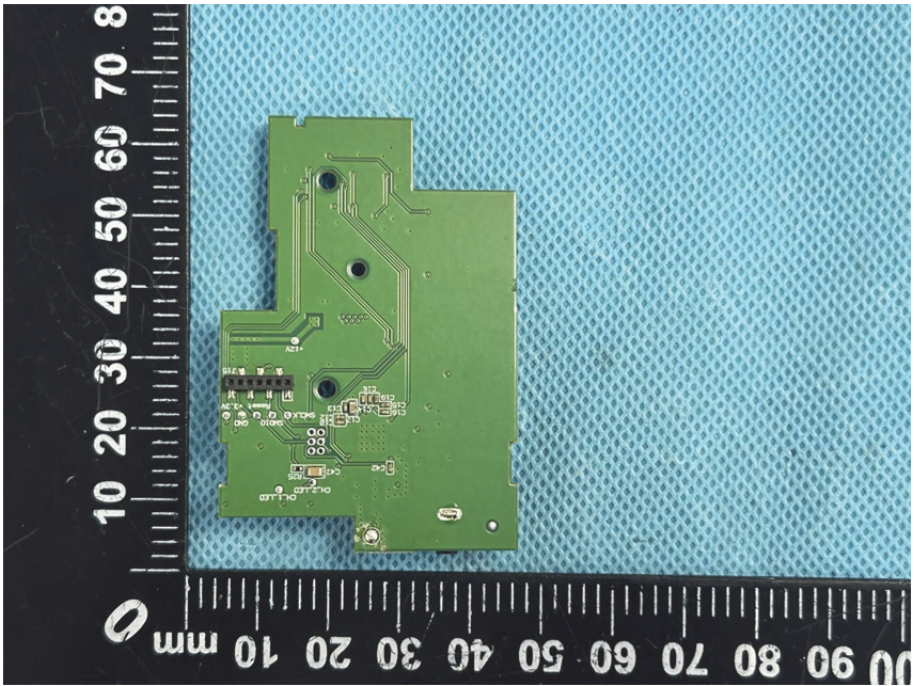
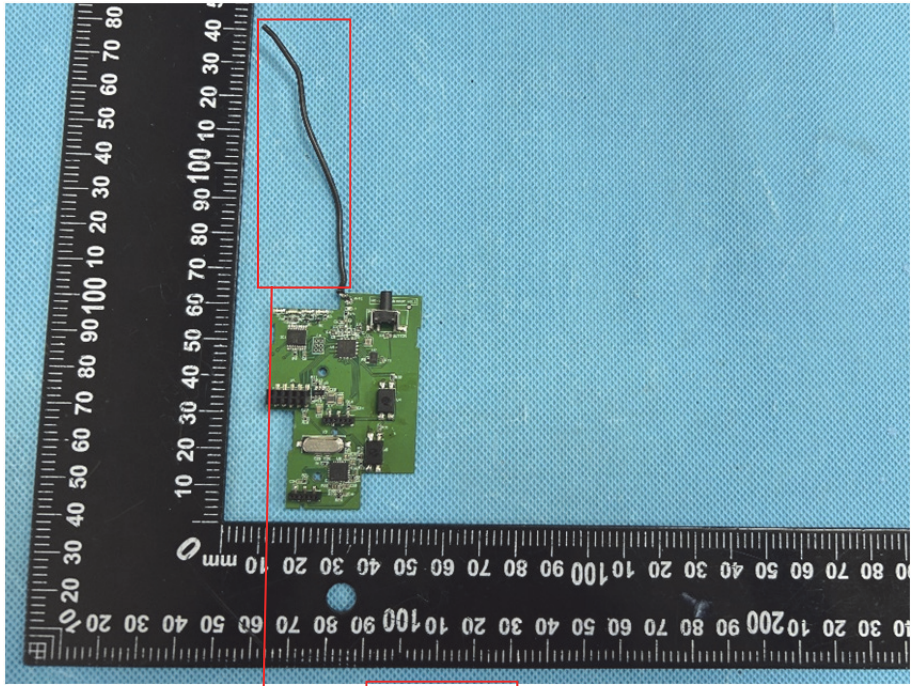


**Solder
Board-Component
View 2**



**Solder
Board-Component
View 3**



<p>Solder Board-Component View 4</p>	 <p>A photograph of a green printed circuit board (PCB) component, likely a solder mask or a small board, placed on a blue textured surface. The component is irregularly shaped and features various electronic components, including a multi-pin connector, several small surface-mount components, and traces. A black ruler with white markings is positioned vertically to the left of the component, showing measurements from 0 to 80 mm. The component is oriented vertically, with its top edge near the 80 mm mark and its bottom edge near the 10 mm mark.</p>
<p>Antenna View</p>	 <p>A photograph of the same green PCB component, viewed from a different angle. The component is placed on a blue textured surface. A black ruler with white markings is positioned vertically to the left of the component, showing measurements from 0 to 80 mm. The component is oriented vertically, with its top edge near the 80 mm mark and its bottom edge near the 10 mm mark. A red rectangular box highlights a thin, black, flexible antenna wire extending from the top of the component. A red line connects this box to a red-bordered box labeled "Antenna" located below the component.</p>