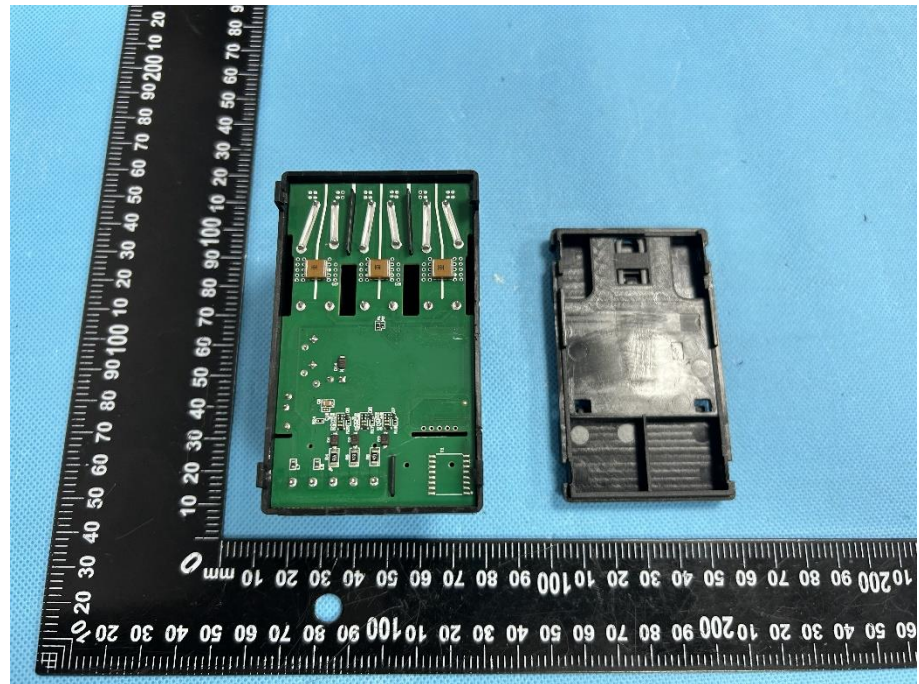
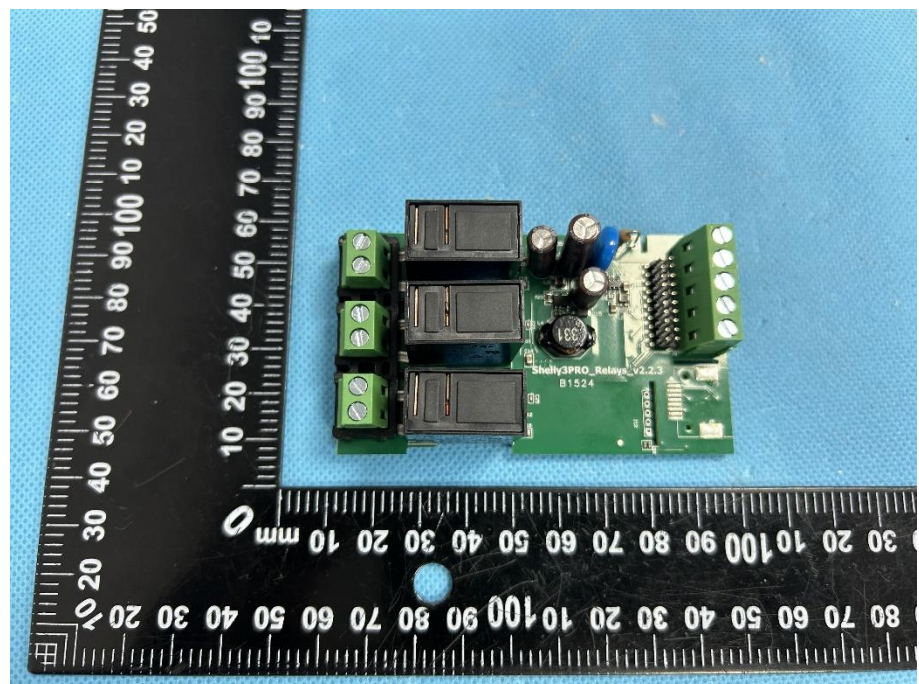


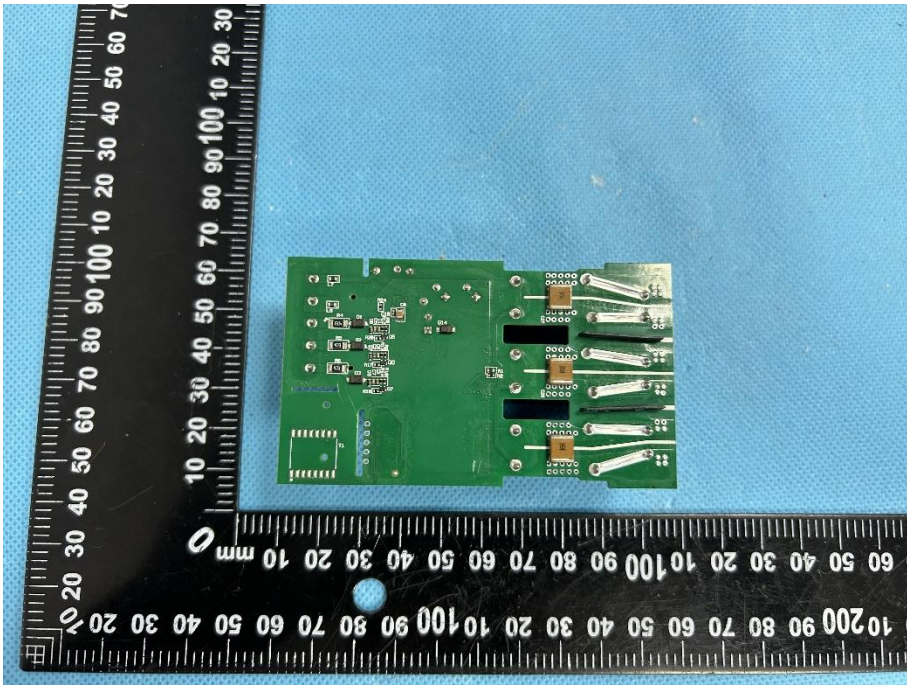
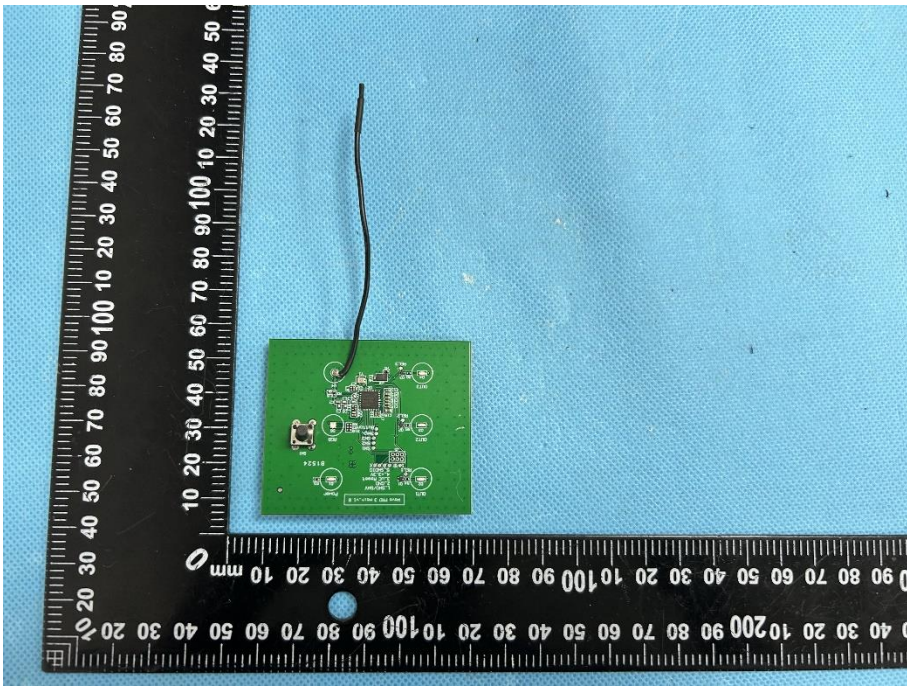
EXHIBIT 3 - EUT INTERNAL PHOTOGRAPHS

**EUT Housing and
Board View 1**



**Solder
Board-Component
View 1**



<p>Solder Board-Component View 2</p>	 A photograph showing a green printed circuit board (PCB) component with various electronic components and solder joints. The component is placed on a blue textured surface next to a black ruler with white markings. The ruler shows measurements in millimeters, with the component's length being approximately 100 mm. The component has several components, including what appears to be a microcontroller or IC, and several soldered connections on the right side.
<p>Solder Board-Component View 3</p>	 A photograph showing the same green PCB component from a different perspective. A thin black wire is connected to one of the components on the board. The component is placed on a blue textured surface next to a black ruler with white markings. The ruler shows measurements in millimeters, with the component's length being approximately 100 mm. The component has several components, including what appears to be a microcontroller or IC, and several soldered connections on the right side.

