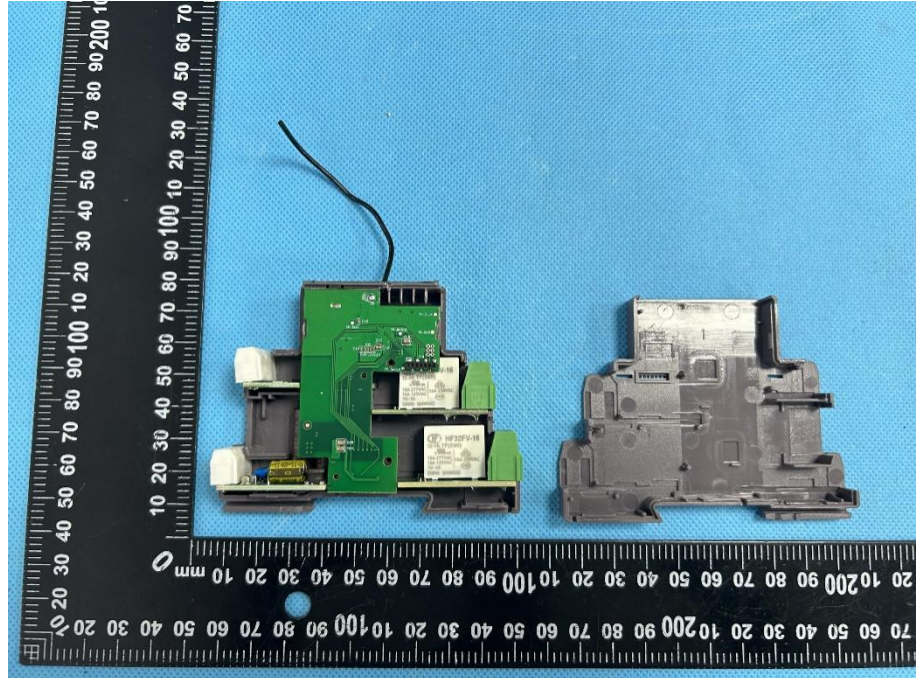
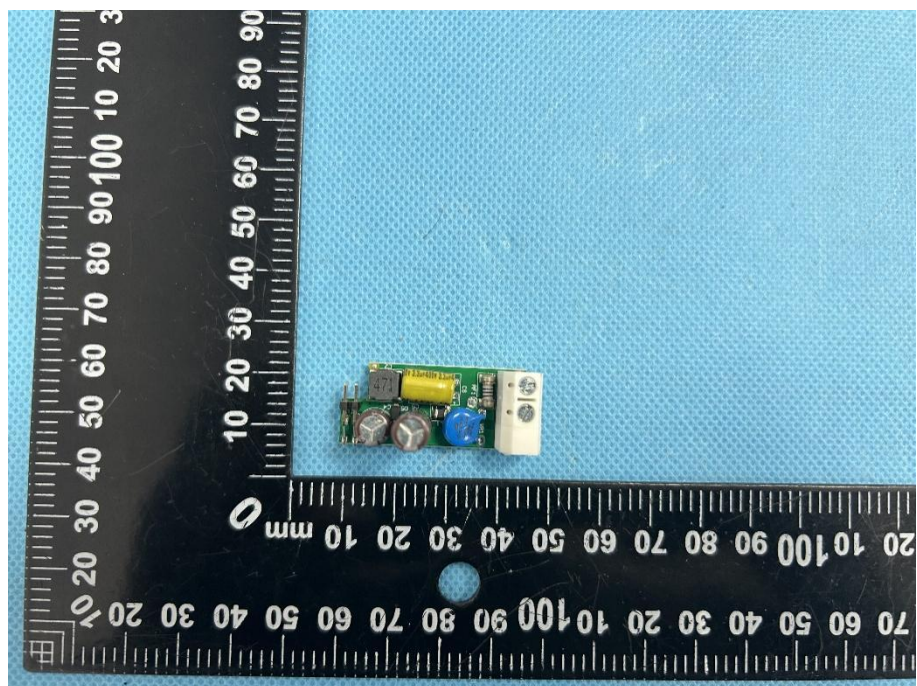


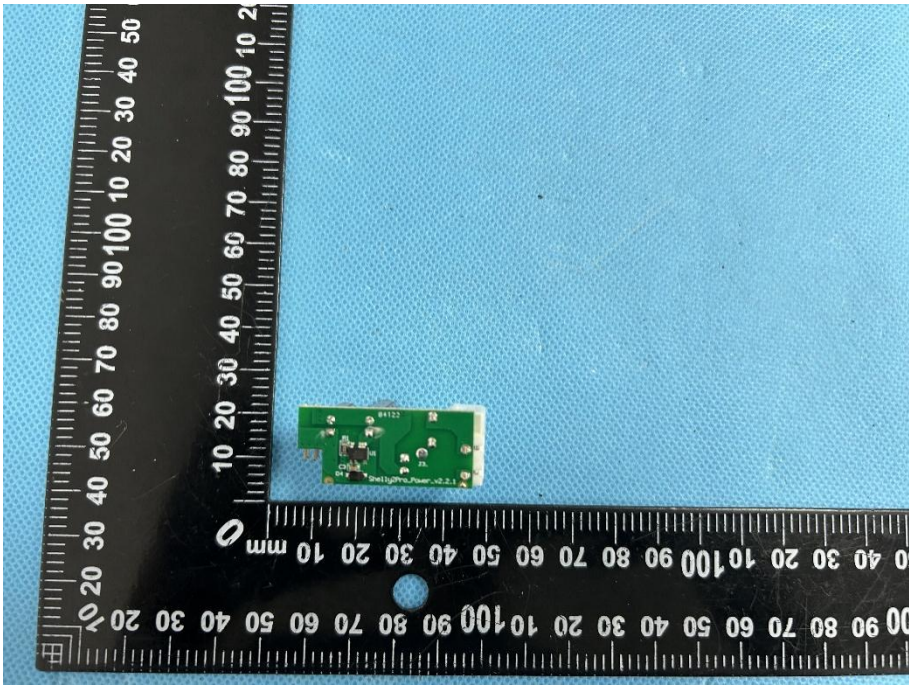
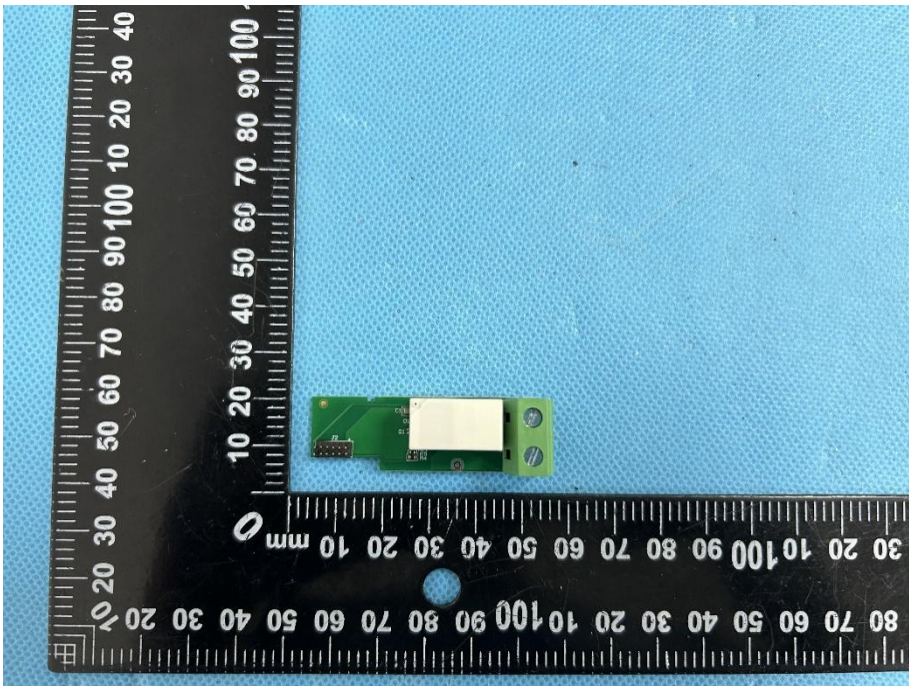
### EXHIBIT 3 - EUT INTERNAL PHOTOGRAPHS

**EUT Housing and Board View 1**

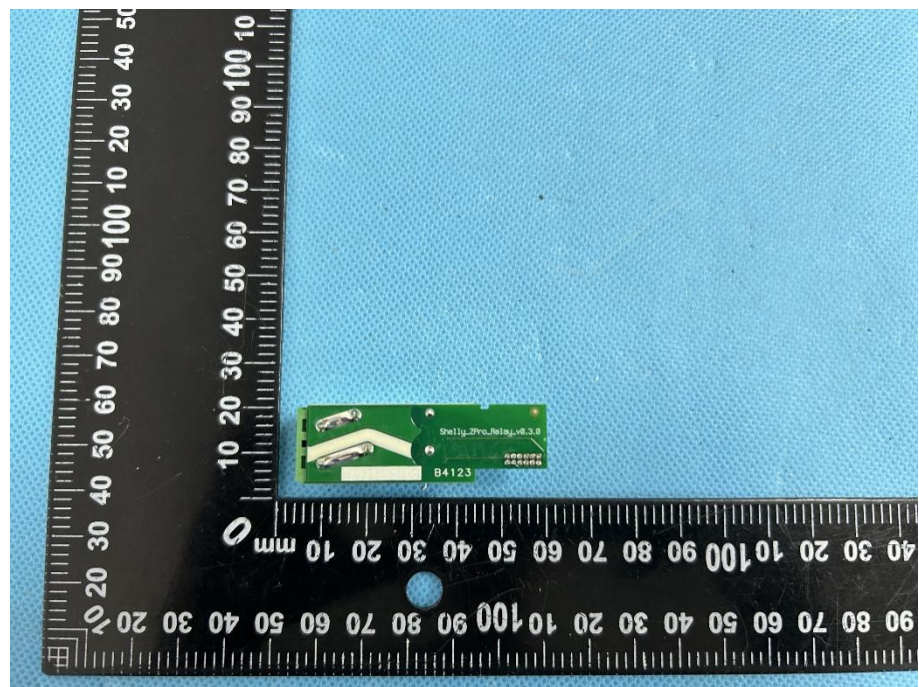


**Solder Board-Component View 1**

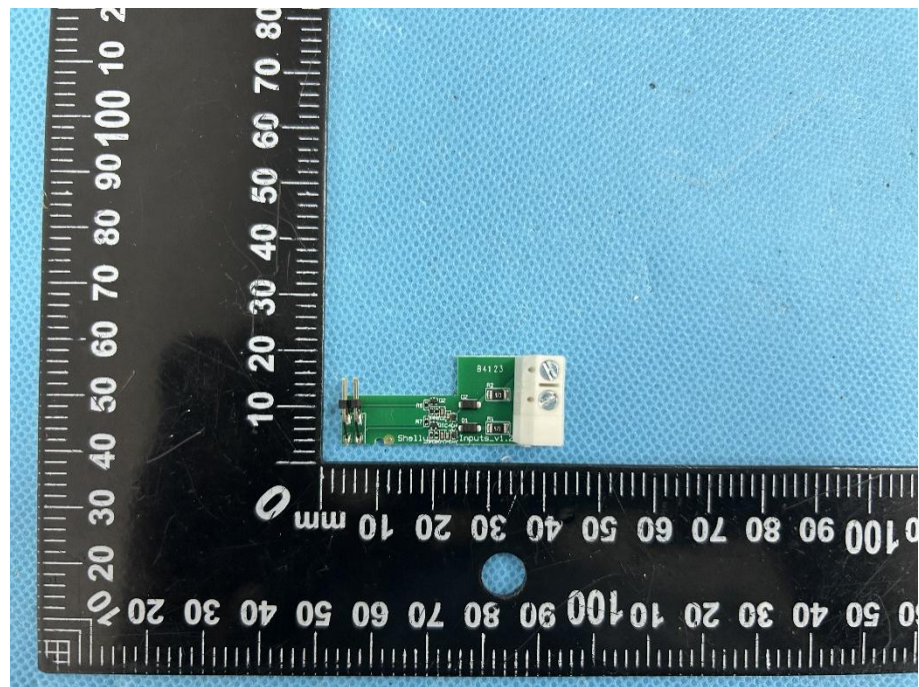


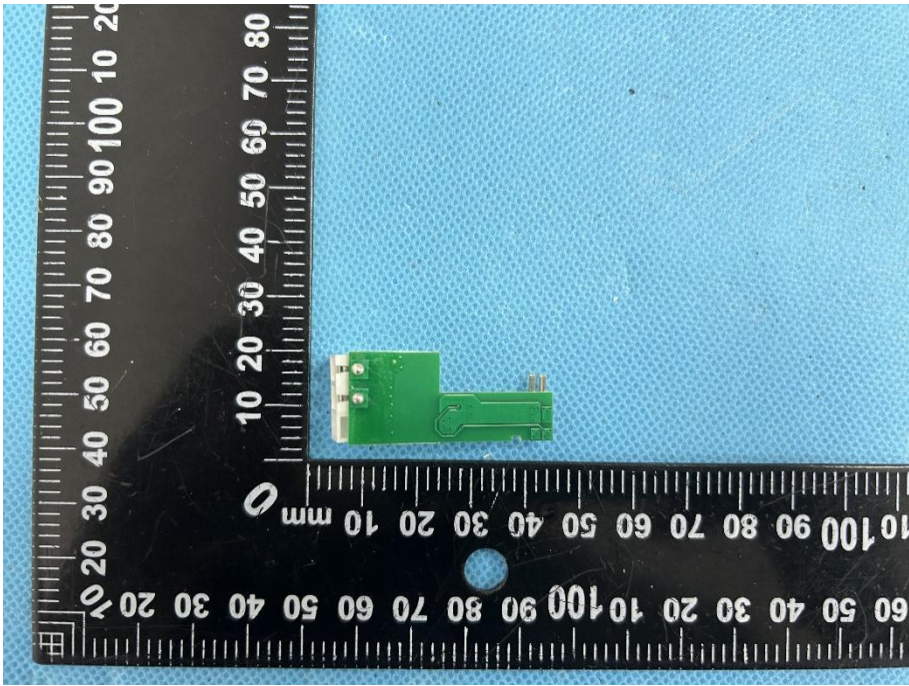
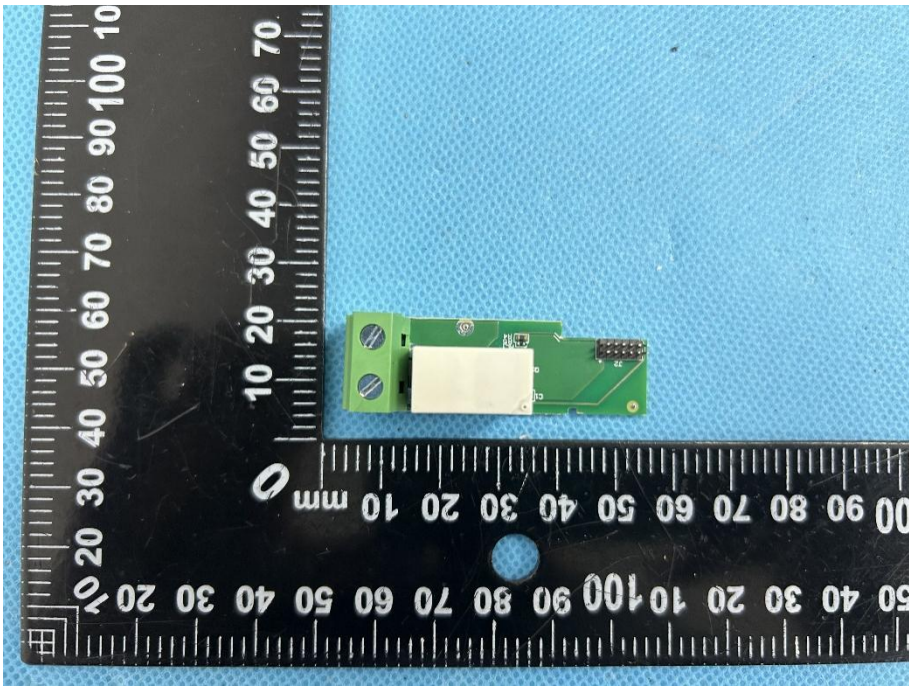
|   |   |
|---|---|
| <p><b>Solder<br/>Board-Component<br/>View 2</b></p> |  A photograph of a small green printed circuit board (PCB) component. The component is rectangular and features several surface-mounted components, including a central integrated circuit (IC) and various passive components. It is positioned on a blue textured surface next to a black L-shaped ruler for scale. The ruler has markings in millimeters and centimeters. The component is oriented horizontally, with its longer side parallel to the bottom edge of the ruler. |
| <p><b>Solder<br/>Board-Component<br/>View 3</b></p> |  A photograph of the same green PCB component from a different perspective. This view shows the component's profile, highlighting its thickness and the presence of a white rectangular label or marking on its top surface. The component is placed on the same blue textured surface next to the same black L-shaped ruler for scale. The component is oriented horizontally, with its longer side parallel to the bottom edge of the ruler.                                     |

**Solder  
Board-Component  
View 4**

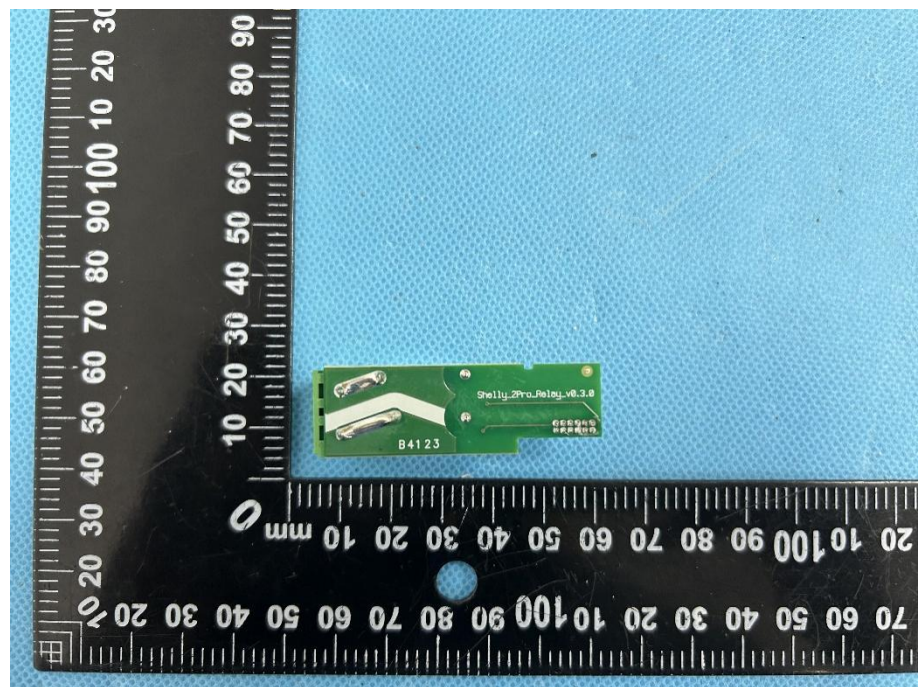


**Solder  
Board-Component  
View 5**



|   |  |
|---|--|
| <p><b>Solder<br/>Board-Component<br/>View 6</b></p> |  A photograph showing a small green printed circuit board (PCB) component. The component is rectangular with a small protrusion on the right side. It is placed on a blue textured surface next to a black ruler with white markings. The ruler shows measurements in millimeters, with the component's length being approximately 30 mm and its width approximately 10 mm. The component has several small components and traces on its surface.  |
| <p><b>Solder<br/>Board-Component<br/>View 7</b></p> |  A photograph showing the same green PCB component from a different perspective. This view shows the component's profile, including a white rectangular component mounted on top. The component is placed on a blue textured surface next to a black ruler with white markings. The ruler shows measurements in millimeters, with the component's length being approximately 30 mm and its width approximately 10 mm. The component has several small components and traces on its surface. |

**Solder  
Board-Component  
View 8**



**Solder  
Board-Component  
View 9**

