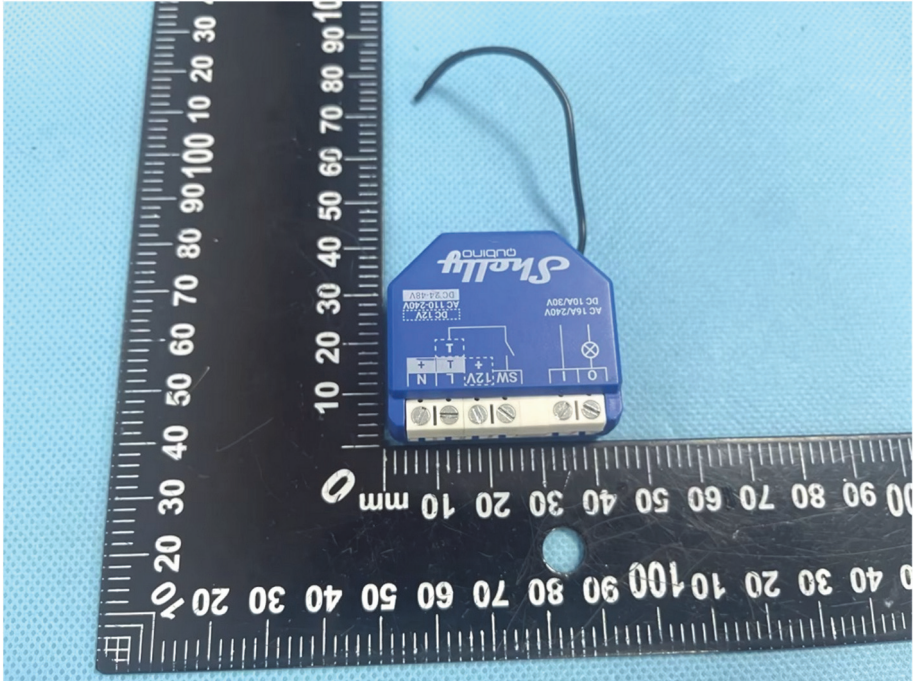
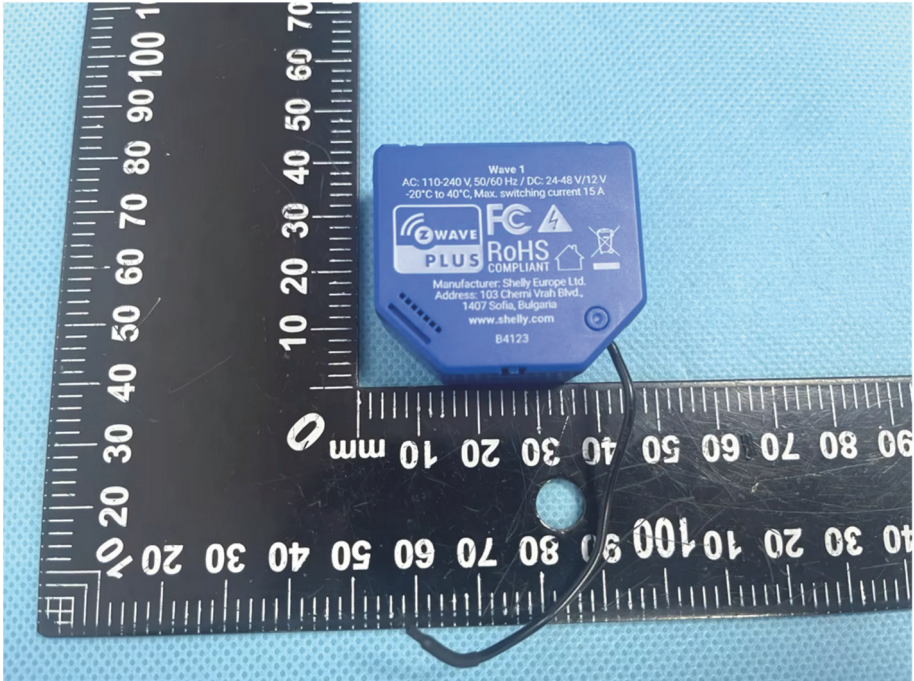
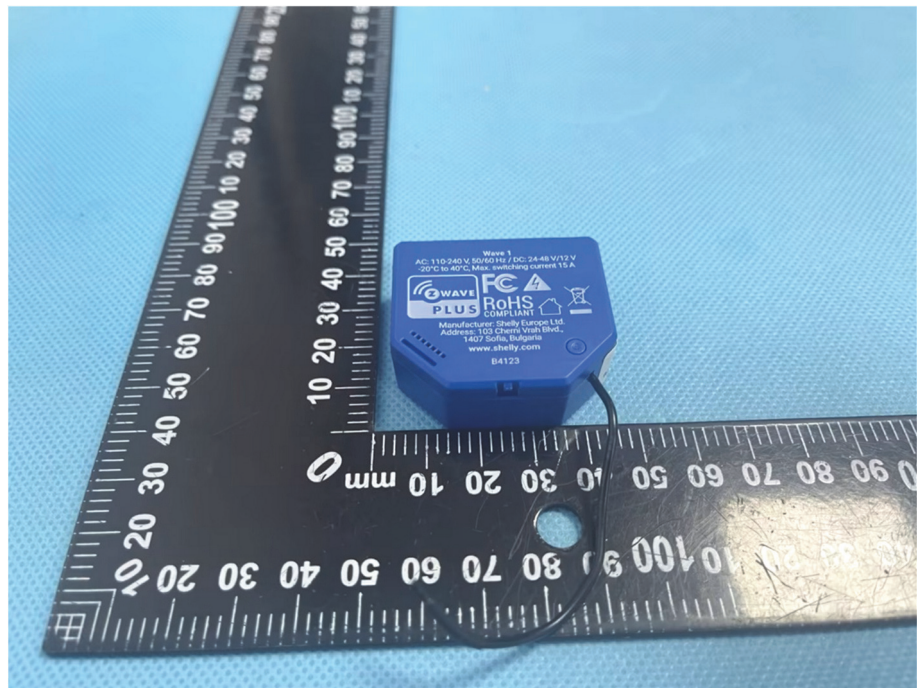


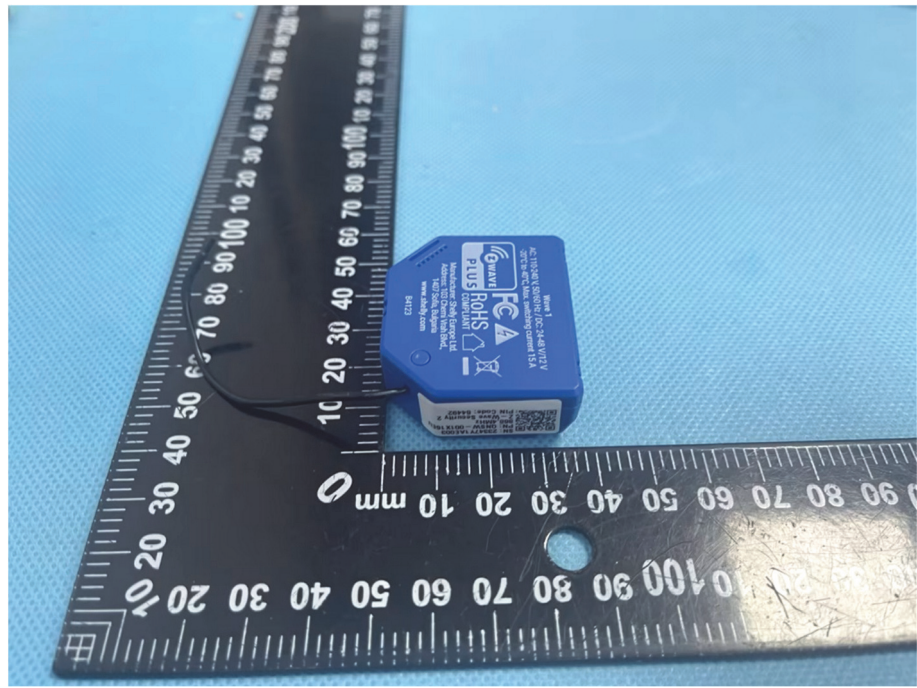
EXHIBIT 2 - EUT EXTERNAL PHOTOGRAPHS

<p>EUT View 1</p>	 <p>A photograph showing the front view of a blue Shelly switch module. The device is placed on a black ruler with white markings for scale. The Shelly logo is visible at the top. Below the logo, there is a schematic diagram of the internal wiring. At the bottom, there are three screw terminals labeled 'L', 'N', and '0'. A black wire is connected to the '0' terminal.</p>
<p>EUT View 2</p>	 <p>A photograph showing the back view of the blue Shelly switch module. The device is placed on a black ruler with white markings for scale. The back of the module features several logos and technical specifications: 'Wave 1', 'AC: 110-240 V, 50/60 Hz / DC: 24-48 V/12 V', '-20°C to 40°C, Max. switching current 15 A', 'Z-WAVE PLUS', 'FC', 'RoHS COMPLIANT', and the manufacturer information: 'Manufacturer: Shelly Europe Ltd. Address: 103 Cherni Vrah Blvd., 1407 Sofia, Bulgaria www.shelly.com B4123'.</p>

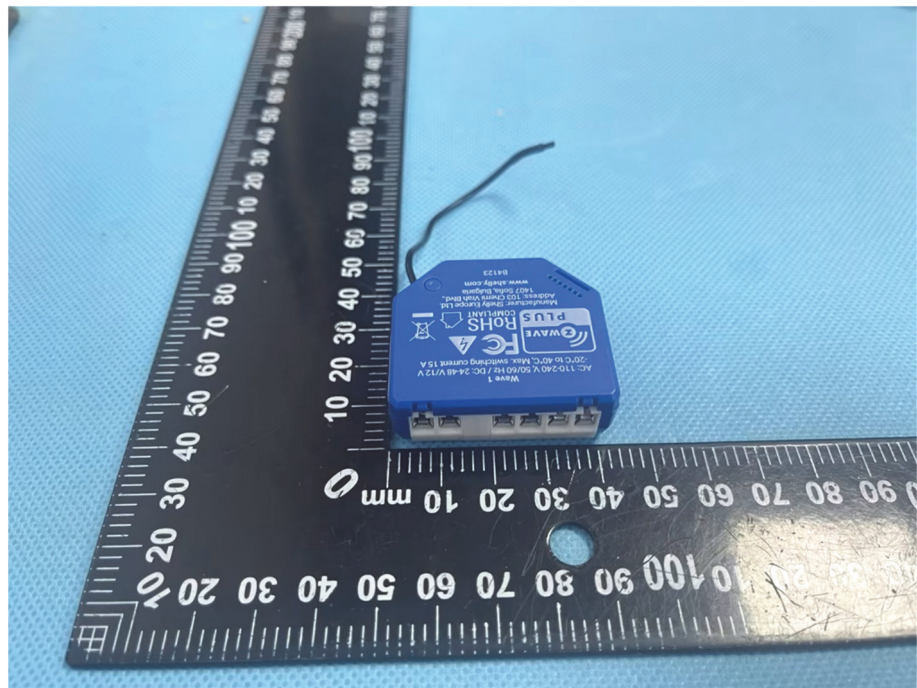
EUT View 3



EUT View 4



EUT View 5



EUT View 6

