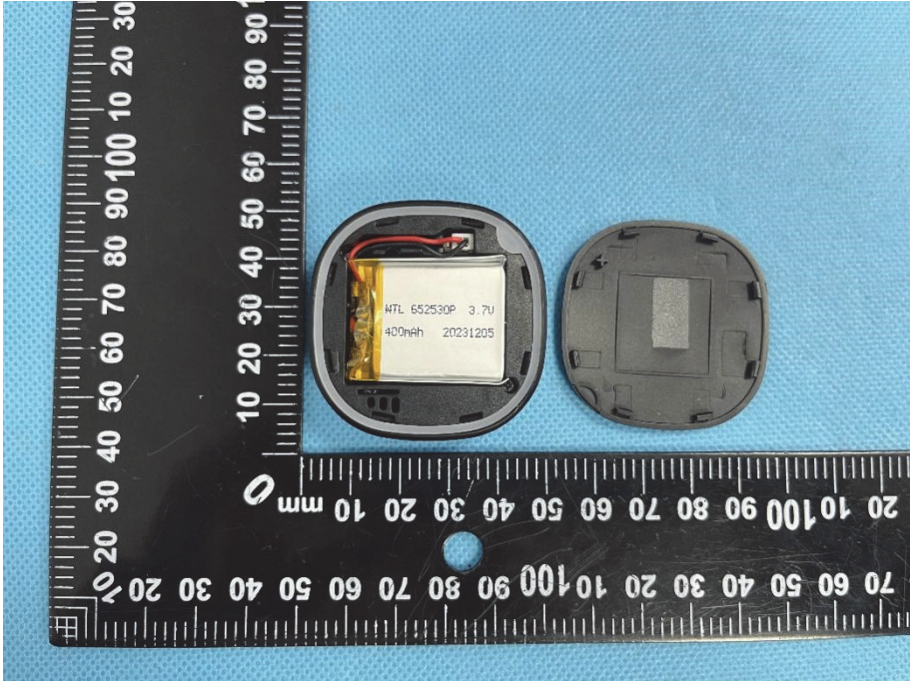
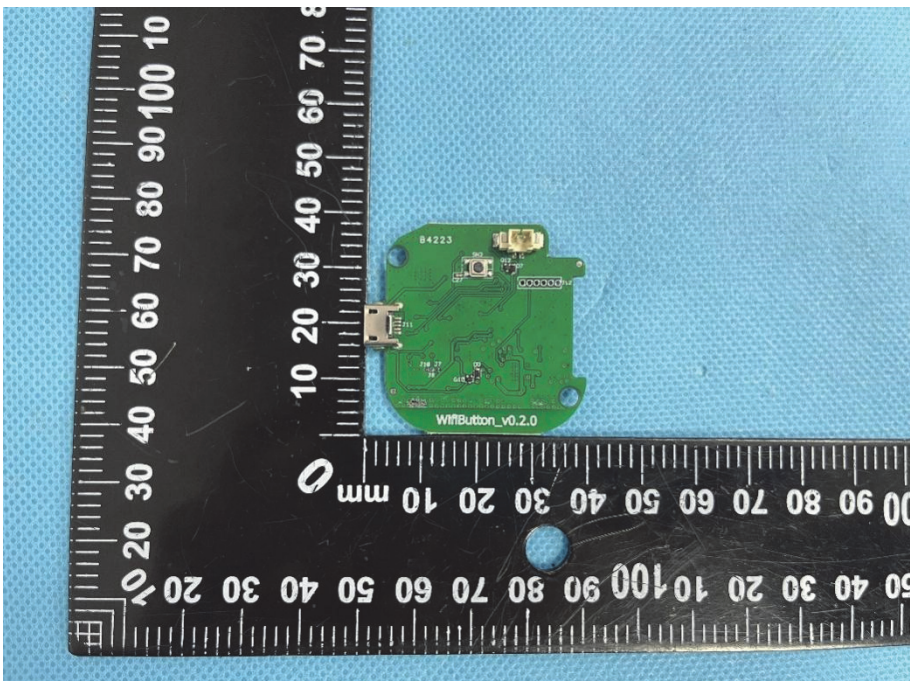
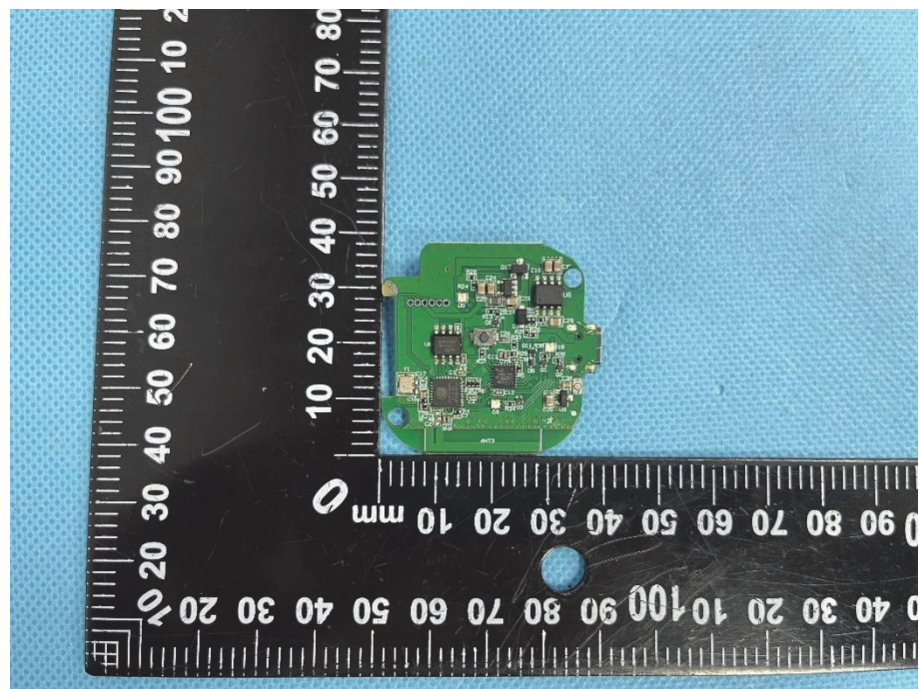


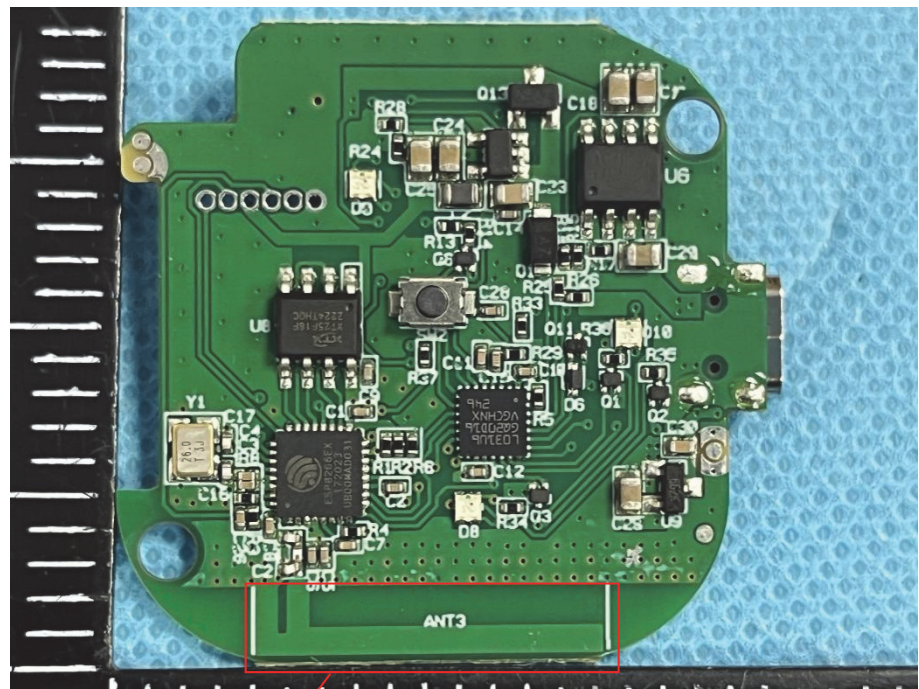
EXHIBIT 3 - EUT INTERNAL PHOTOGRAPHS

<p>EUT Housing and Board View 1</p>	 <p>A photograph showing the internal components of an EUT housing. On the left is the housing with a battery installed. The battery label reads: HTL 652530P 3.7V, 400mAh 20231205. To the right is the back cover of the housing. A black ruler with white markings is placed below the components for scale, showing measurements in millimeters.</p>
<p>Solder Board-Component View 1</p>	 <p>A photograph of a green printed circuit board (PCB) component. The board is populated with various electronic components, including a microcontroller, capacitors, and a connector. The text "WIFIButton_v0.2.0" is printed on the board. A black ruler with white markings is placed below the component for scale, showing measurements in millimeters.</p>

**Solder
Board-Component
View 2**



Antenna View



WIFI Ant.