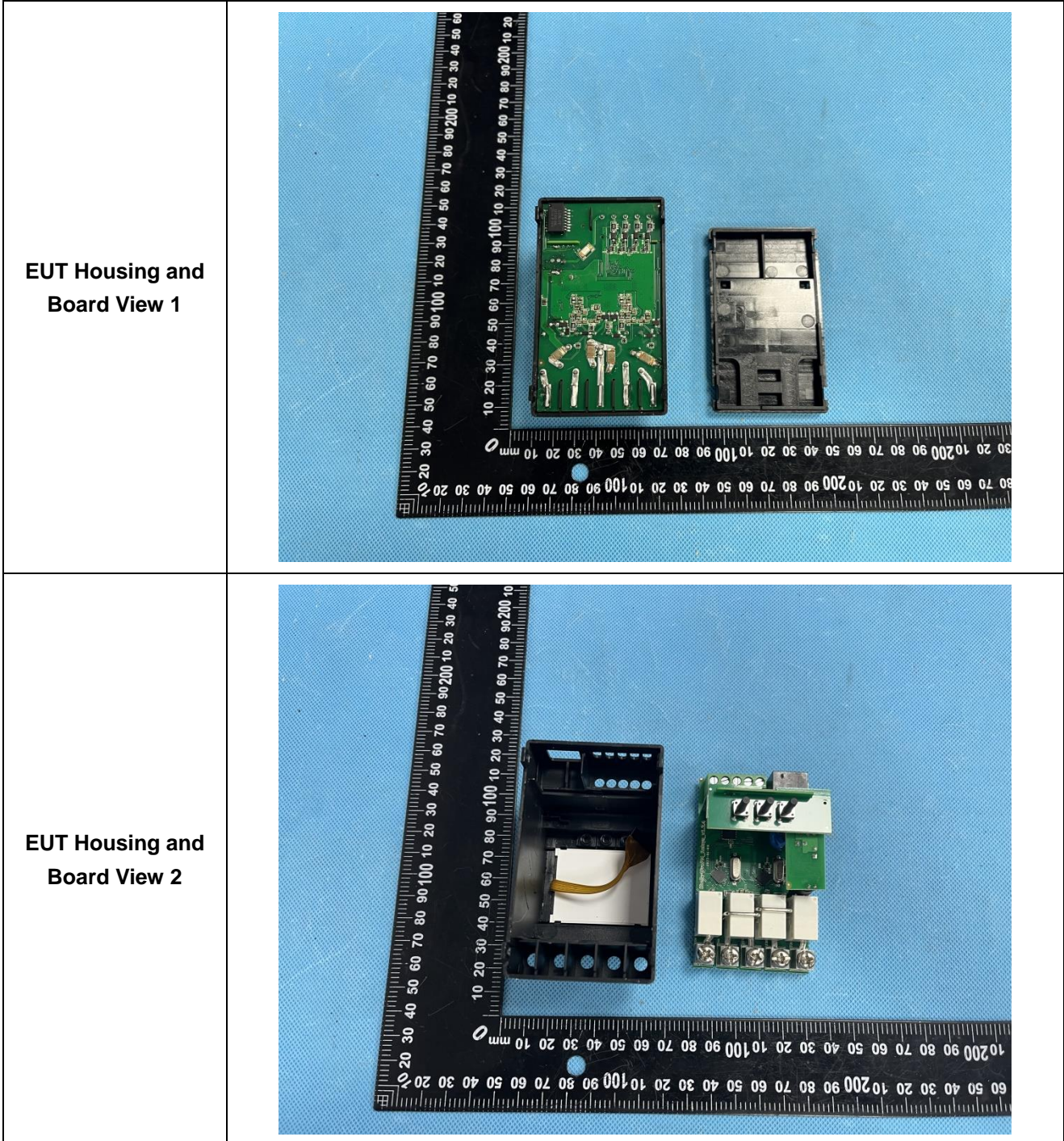
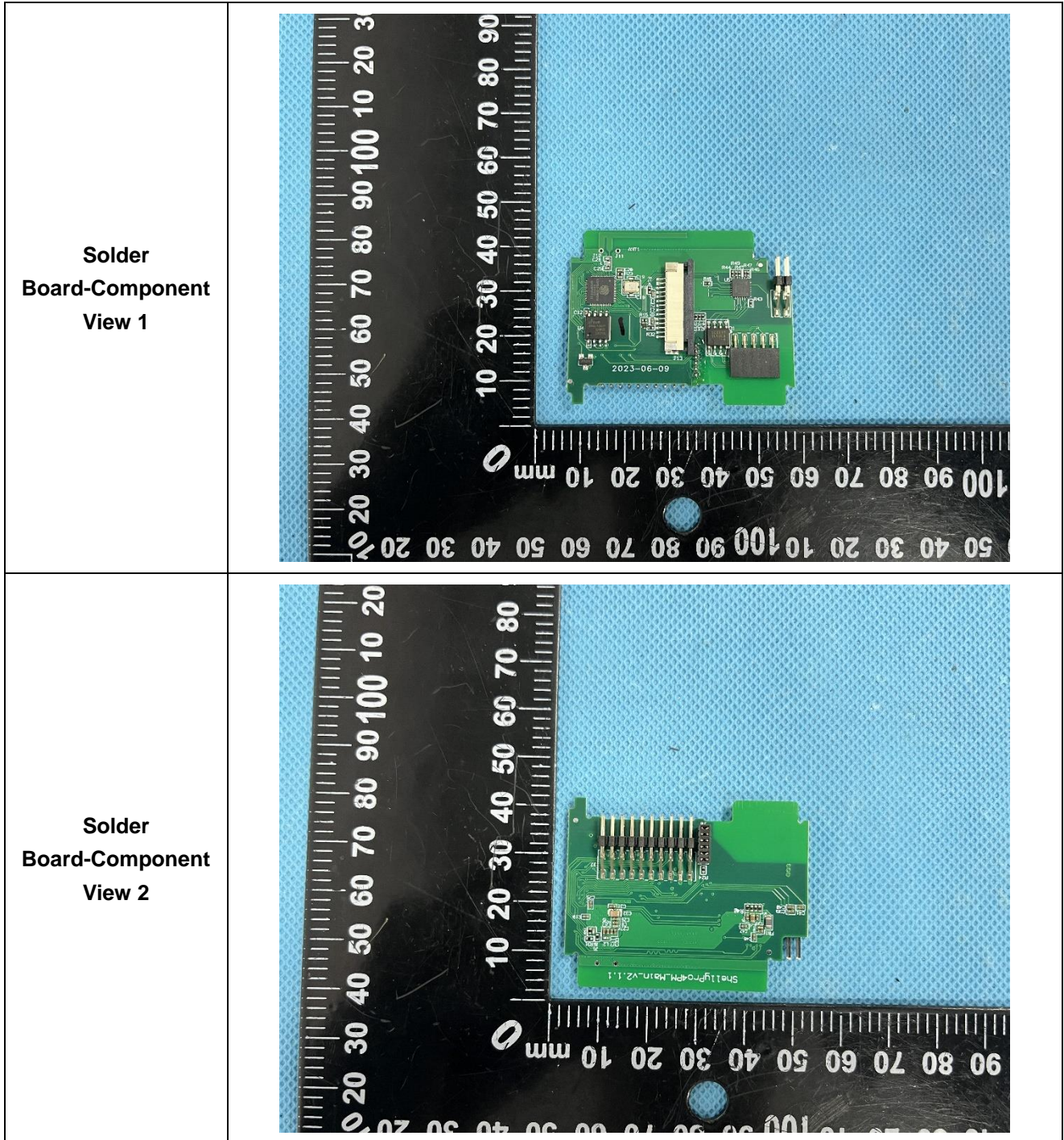
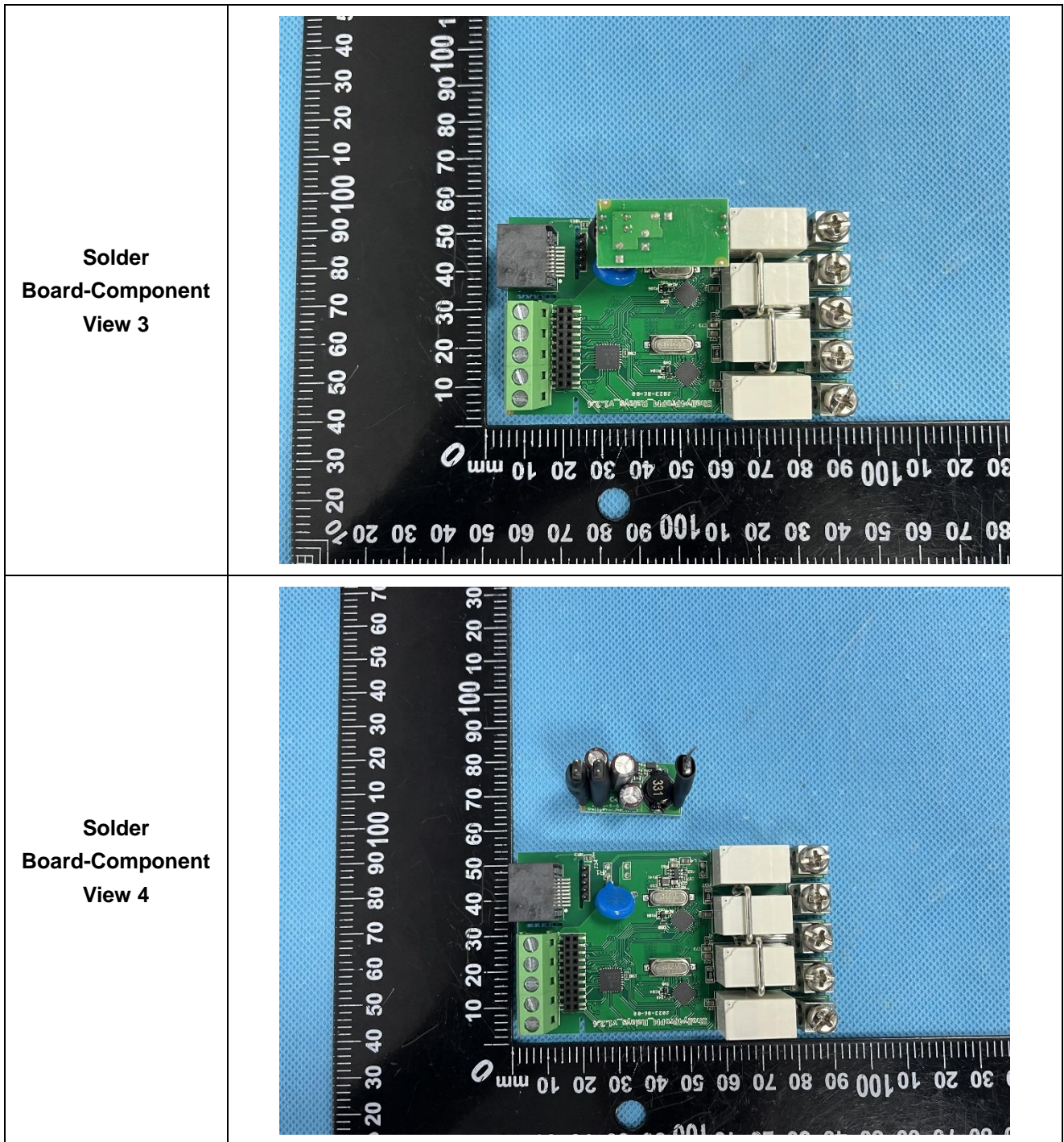


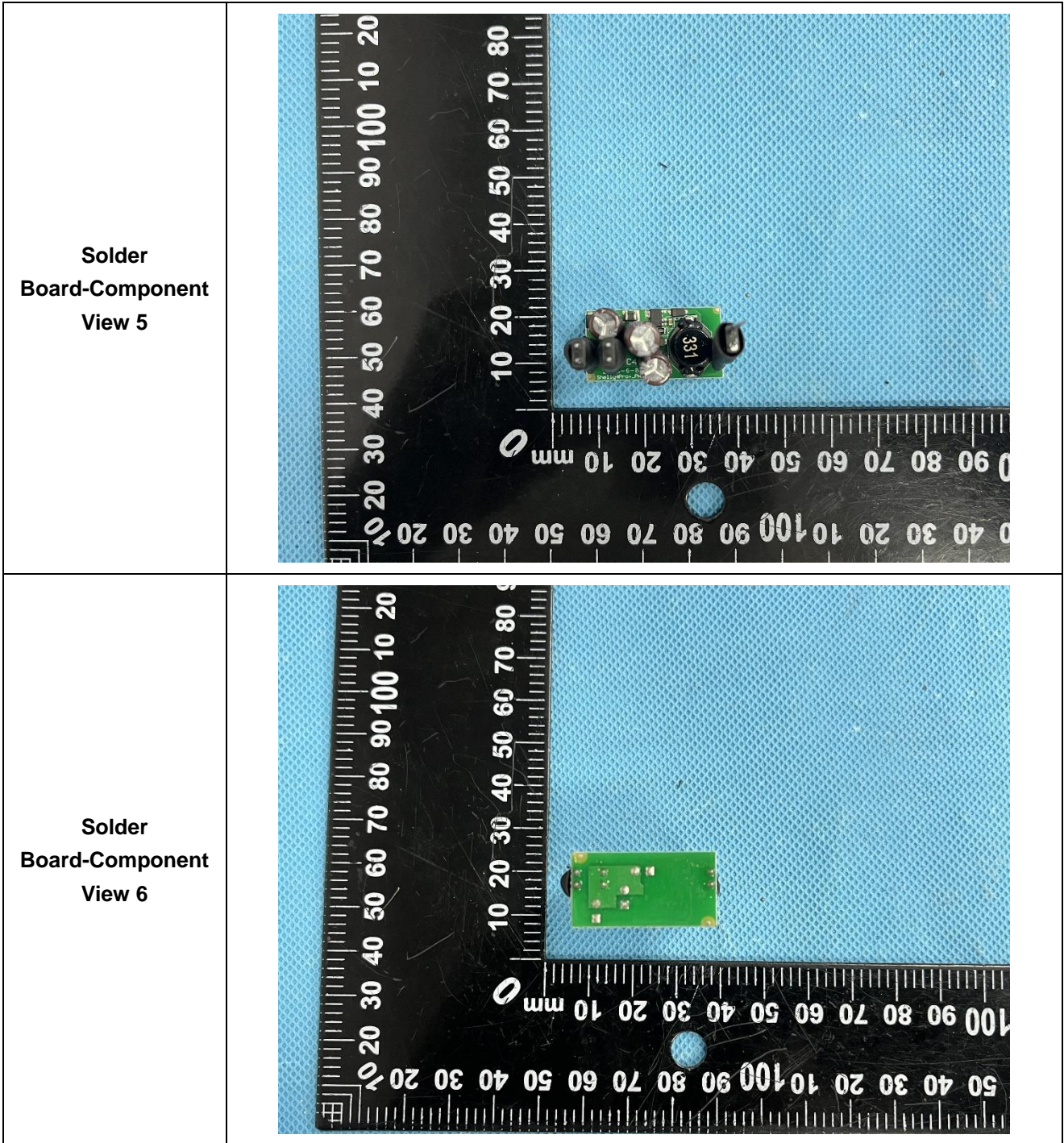
EXHIBIT 3 - EUT INTERNAL PHOTOGRAPHS

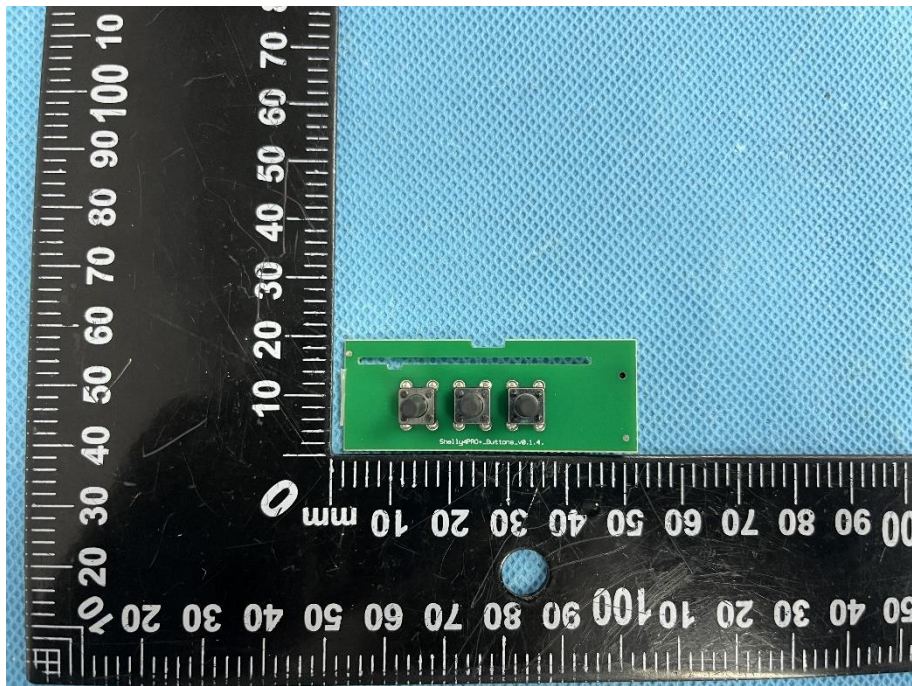
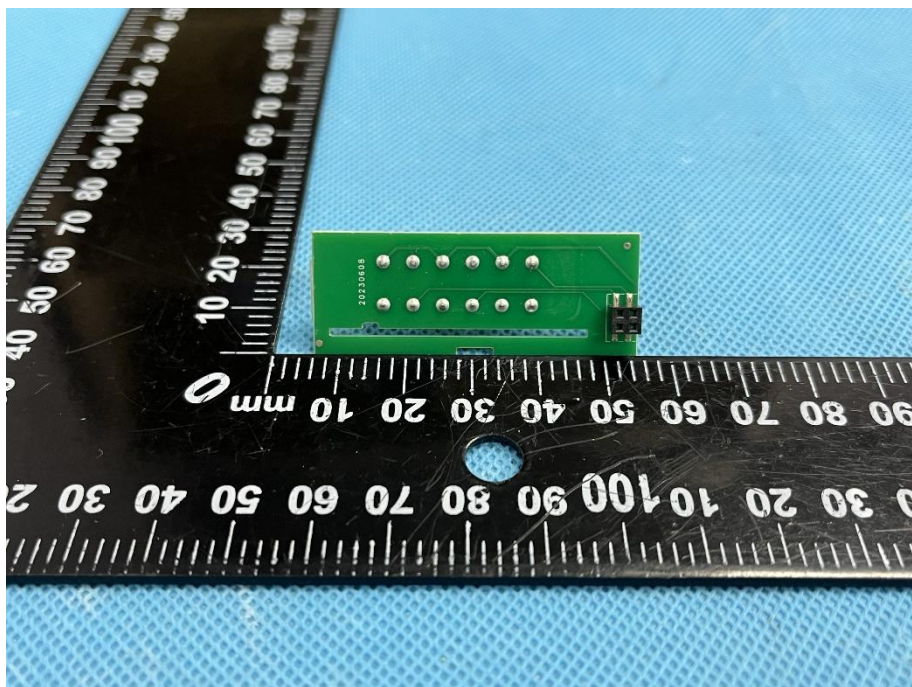
Model: Shelly Pro 4PM



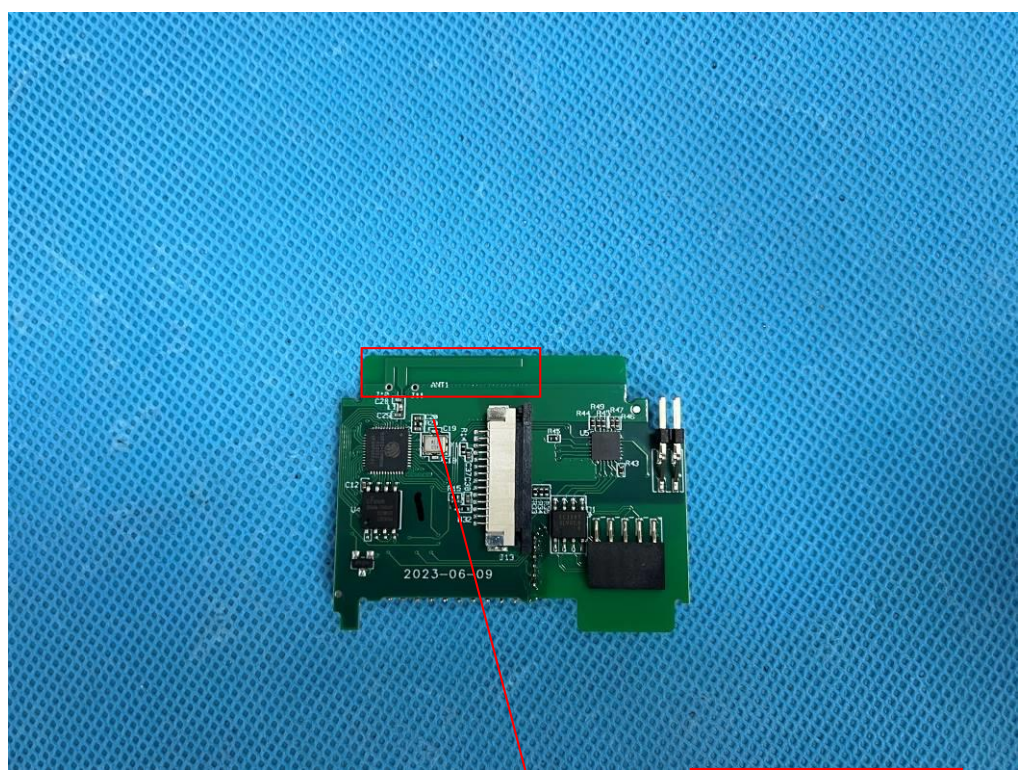






<p>Solder Board-Component View 7</p>	 A photograph of a small green PCB component with three circular solder joints on its top surface. The component is placed on a black ruler with white markings for scale. The ruler shows centimeter and millimeter increments. The component is positioned between the 10mm and 20mm marks on the ruler. The background is a light blue textured surface.
<p>Solder Board-Component View 8</p>	 A photograph of the same green PCB component from a different angle, showing its bottom surface. It features a series of small circular solder joints along one edge and a connector on the opposite side. The component is placed on a black ruler with white markings for scale. The ruler shows centimeter and millimeter increments. The component is positioned between the 10mm and 20mm marks on the ruler. The background is a light blue textured surface.

Antenna View



BT/WIFI Ant.