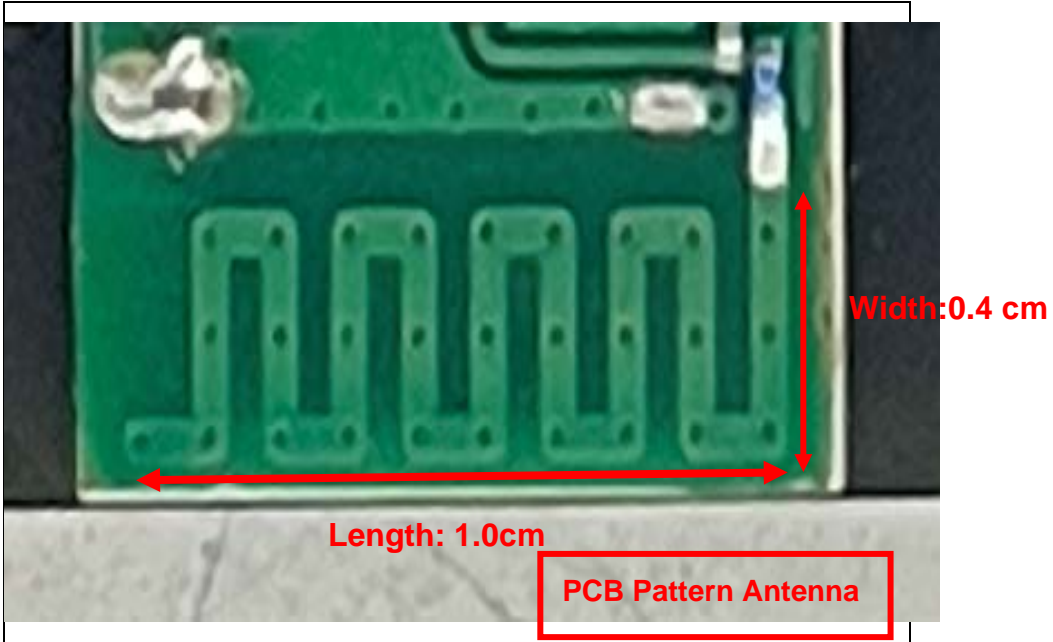


## Antenna Information

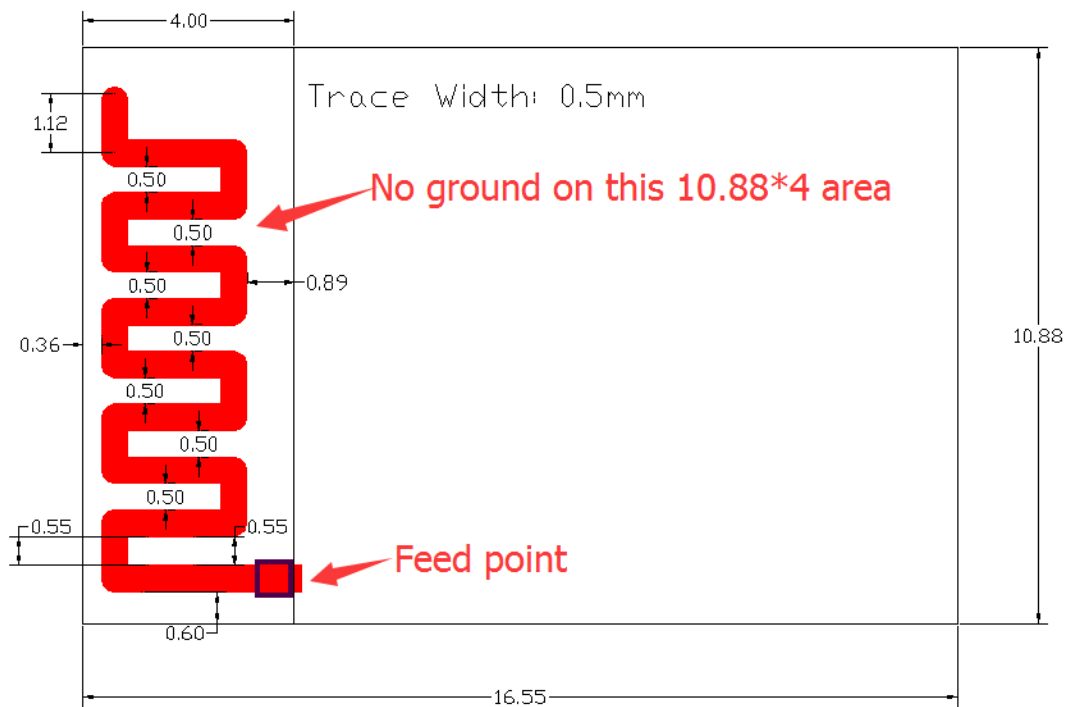
Item	Contents
Antenna Type	PCB Pattern Antenna
Antenna peak gain	2 400 MHz ~ 2 483.5MHz: 1.0 dBi
Manufacturer / Model name	BDE Technology / BDE-BLEM201P
Address of manufacturer	China Guangzhou Office Creative Building B2-403, 162 Science Ave, Science City Guangzhou 510663, China
Test laboratory	BDE Technology
Length	1.0 cm
Width	0.4 cm



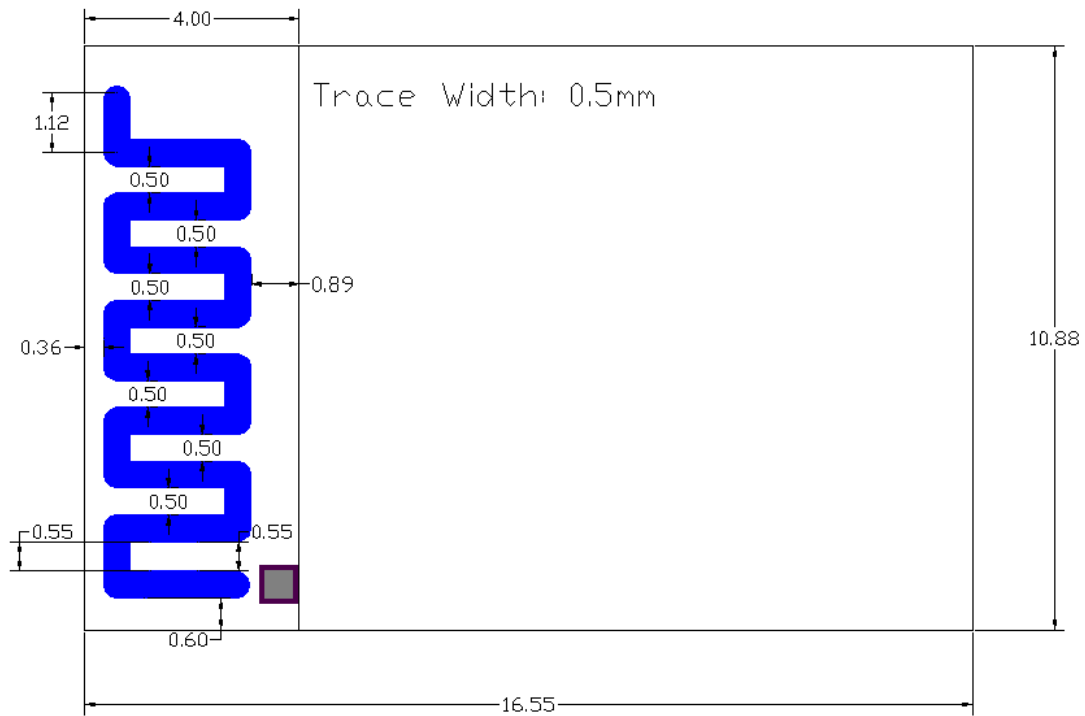
# Antenna Specification

## BDE-BLEM201P

### 1. Mechanical Dimension



All dimensions are in mm



All dimensions are in mm

## 2. Gain and Efficiency

Frequency	Gain	Efficiency
2400MHz	-2.76	20.61%
2410MHz	-3.20	23.41%
2420MHz	-1.13	33.30%
2430MHz	-1.73	30.18%
2440MHz	-2.81	22.94%
2450MHz	-2.89	23.60%
2460MHz	-2.02	30.80%
2470MHz	-1.30	36.02%
2480MHz	-0.50	33.79%

The spec of the printed PCB antenna is as follow:

Frequency Range (MHz): 2400~2500

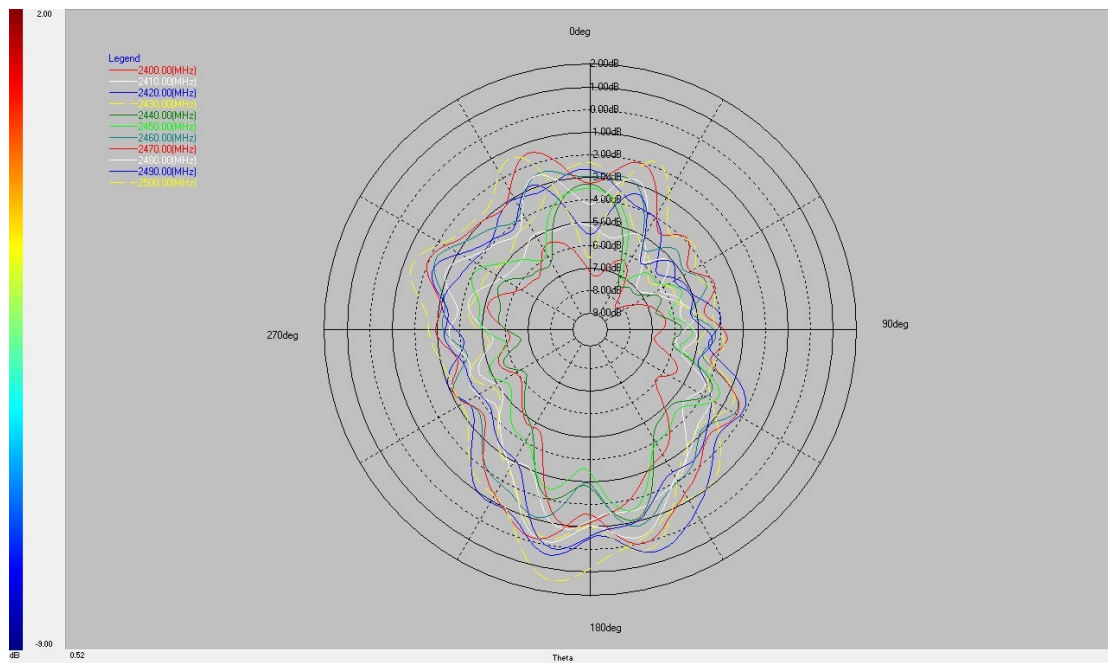
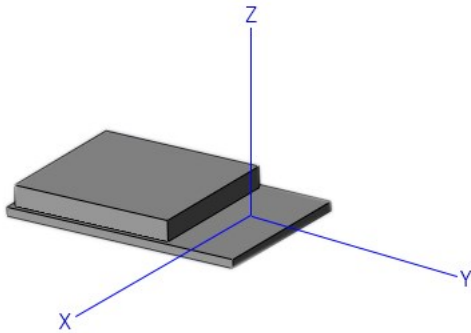
Peak Gain (XZ-V): 1dBi typ

Average Gain (XZ-V): 0dBi typ

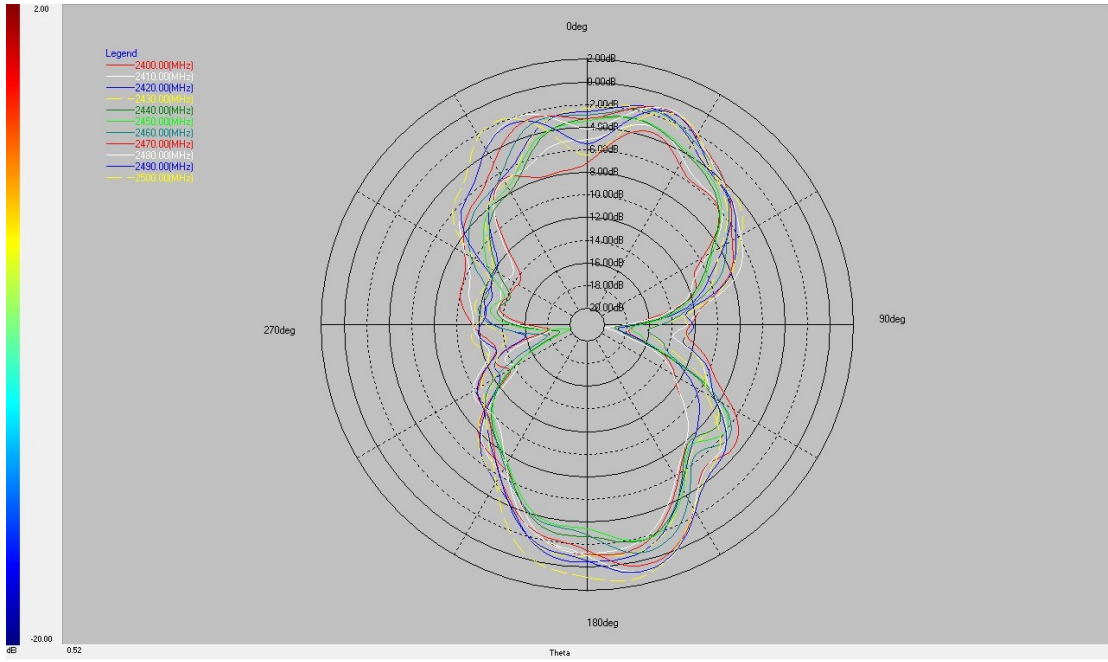
VSWR : 2 max

Impedance : 50 ohm

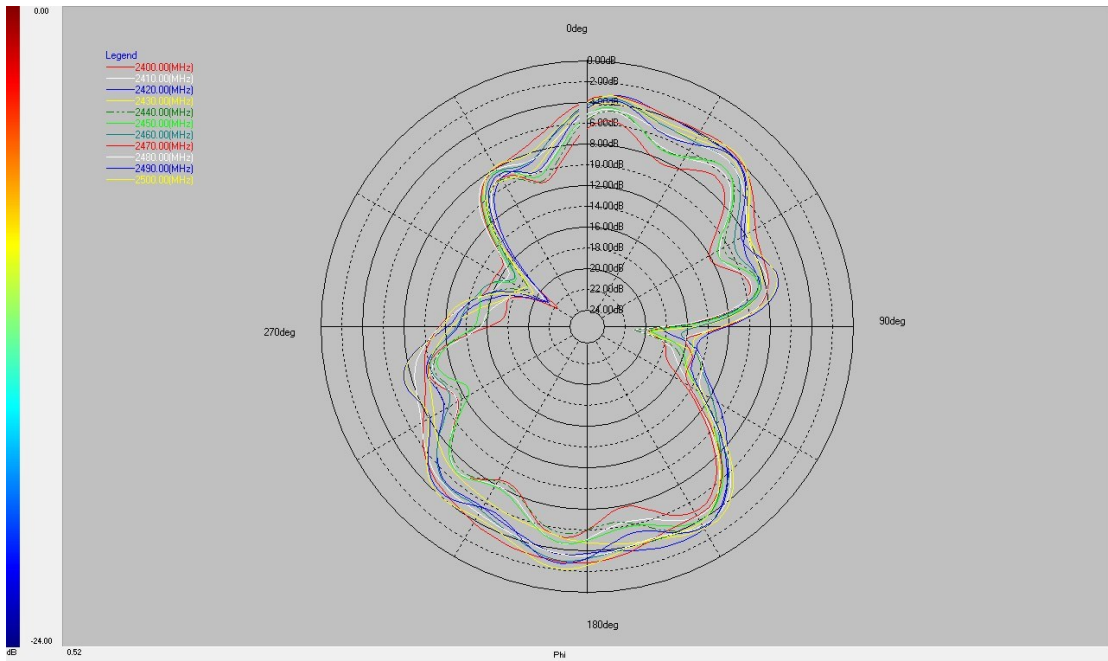
### 3. Radiation Pattern



XZ plane (Phi = 0°)



YZ plane (Phi = 90°)



XY plane (Theta = 90°)