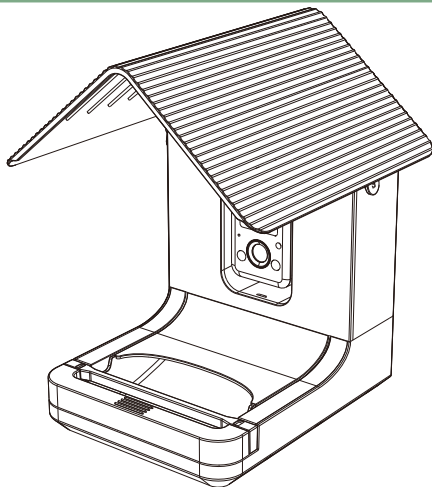


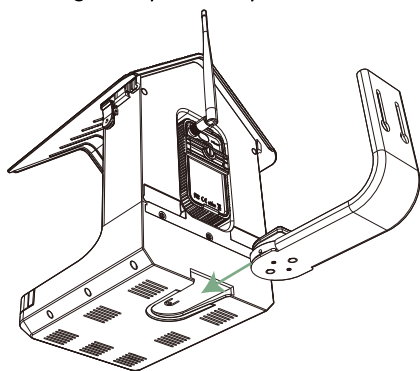
3



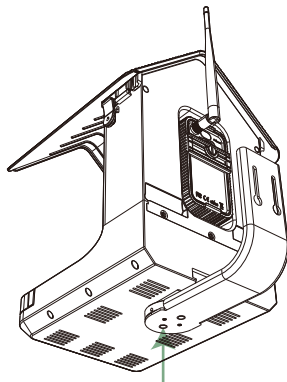
Hear a click and lock it

Step3. Install metal bracket

Push the metal bracket into the groove in the bird feeder base
(If you don't want to wall-mount the bird feeder, but prefer to hang or lay it flat, you don't need to install the metal bracket).



Match the bottom of feeder part

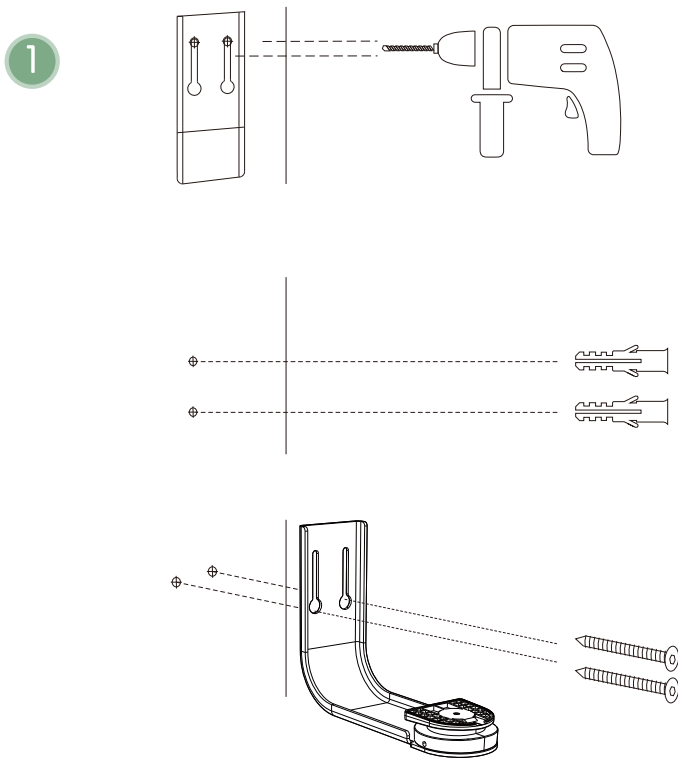


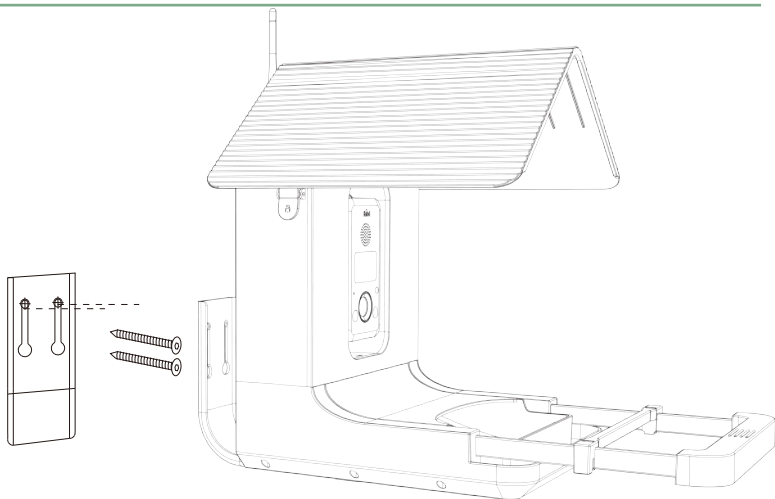
Screw tight to fix firmly

Step4. Wall-mounted

Wall-mounted to the exterior wall of the house or somewhere where it can be hung outdoors (where Wi-Fi signal is covered). Place the positioning sticker where you want to hang Hibird, drill holes at the designated location, and install anchors and screws.

Hang the camera on the anchors.





Let the metal bracket pass through the screws and hang at the designated location (the sticker can assist positioning)

5. Product features

Bird detection & filter

Hibird can detect birds flying to bird feeders and take pictures. After taking pictures, the photos and videos will be transferred to your app. You can also turn on Bird Filter on the App. Once turned on, it will filter out some false triggers for you, so that the photos and videos sent to your App are all birds, not passers-by, cars or other small animals.



4K video recording & sending

Hibird supports shooting 4K videos, giving you clear and detailed bird images.



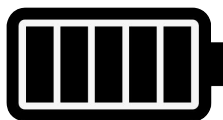
Wi-Fi 2.4G/5G supports

Hibird supports connecting to dual-band Wi-Fi networks, giving you more choices for better one.



Large capacity battery

10,000mAh large-capacity battery supports up to 6 months of standby when fully charged (actual usage time is determined based on the number of photos/recordings and transmissions)



Dr.Bird

Hibird supports you to use the Dr.Bird function in the App. Dr.Bird is an intelligent chat bot that can answer questions about birds. You can ask it about the habits of birds, how to attract birds, and how to feed them. Birds and other knowledge, it will become your good partner.

6. Product specifications

Item	Specification
Dimension	Bird feeder: 20.0(length)*24.6(width)*34.5 (height) (cm) Extended stand: 20.0(length)*18.6(width)*1.50 cm(height) (cm)
Net weight	2.35KG(camera+bird feeder+accessry kit, excluding the package)
Bird dection	PIR trigger, under 0.4s per triggering
Bird detection range	5m, 80°
Image quality	Photo: up to 32MP Video: up to 4K
Live streaming	Available in Camojojo App
Battery	10,000 mAh
Charging input	DC:5V $\overline{\text{---}}$ 2A, PV:6V $\overline{\text{---}}$ 2A/ 12V $\overline{\text{---}}$ 1.5A
Physical storage	Include 32GB micro SD card (TF card), up to 128GB
Cloud storage	Free 1 year cloud storage for all photos and videos (thumbnails)
Connection	2.4G/5G Wi-Fi
Microphone	Yes
Speaker	Yes
Night view	Yes, LED light available in the night
Working temperature	-20℃ ~ 55℃
Storage temperature	-20℃ ~ 60℃
Working humidity	5%~90%
Waterproof	IP66
Time zone	Auto
Screen	Not include
Material	Plastic(ABS, PC), metal
Package size	26.4(length)*29.1(width)*19.3 (height) (cm)

7. FAQs

How to add Hibird and configure the network? What should I do if the network configuration fails?

Hibird must configure a Wi-Fi network through the Camojojo App. You can configure the network either by selecting Network when adding a device or within the Hibird camera settings.

When network configuration is unsuccessful, please check:

Ensure the current location has Wi-Fi signal coverage with strong signal strength.

(2) Verify that the selected Wi-Fi network and password are entered correctly.

(3) Confirm that the network is operational.

Does Hibird require a Wi-Fi network to use it?

Hibird is highly recommended for use in a Wi-Fi environment.

Although Wi-Fi is not required for camera shooting, functions such as transferring photos and videos to the App, setting up the camera, live streaming, and sharing must be operated through the Camojojo App, which necessitates a Wi-Fi network.

If used in a place without Wi-Fi network, the camera can only take photos and videos, and these photos and videos need to be exported manually.

How long does the Hibird battery last?

How long does it take to fully charge?

When the Hibird camera battery is fully charged, it can be used for up to 6 months on standby. The actual usage time will be determined by the number of photos taken and the number of transmissions (photography and transmission will consume power).

It takes about 7.5 hours to fully charge Hibird through a 5V2A charger.

Can Hibird replace memory cards?

What is the maximum storage space supported?

Memory cards can be replaced. The Hibird camera has a 32GB micro SD (TF) card in its accessory package, which you can replace with a micro SD (TF) card up to 128GB.

Can Hibird be used with solar panels or external power sources?

Hibird supports the use of solar panels, and it is recommended to connect solar panels to extend the usage time. Camojojo offers solar panel options, please visit the Camojojo official website or Amazon store to choose.

Where is the Hibird bird feeder suitable for installation?

It is recommended to hang it on the balcony, on a tree in the yard or on the exterior wall of the house, as long as it can be covered by Wi-Fi signal.

How to add bird food to the bird feeder's silo?

Open the latch at the top of the bird feeder and twist it upward to open the top to add birdseed to the silo.

How to clean Hibird bird feeder?

For bird feeder, just wipe the inside and outside with a damp cloth (there may be some bird food stuck to the inner wall or chassis of the granary due to humid weather).

How to use Hibird bird feeder in rainy or humid weather?

The waterproof level of the Hibird camera is IP66. It can be used with confidence in humid or rainy weather. However, the bird feeder is not a sealed structure and may get water if exposed to rain. If there is bird food in the granary, it may become damp and moldy. If used on rainy days, , please do not place too much bird food, or clean the bird feeder promptly after use.

What do birds like to eat? What food can I put to attract more birds?

Black sunflower seeds. Common cereals and fruits can also attract birds to eat them. The simplest way is to put a piece of apple or orange to attract birds.

Can Hibird be used at night?

Yes, it can be used at night. There is an LED fill light on the Hibird camera body, which allows you to see birds clearly at night. You can turn on or off the fill light in the Camojojo App.

How to send photos and videos to Hibird App? How long will it be saved on the App? How to obtain the original photo and video files?

When you add Hibird through the Camojojo App and complete the network configuration after Hibird takes photos or videos in a Wi-Fi environment, it will send the thumbnail photos and thumbnail videos to the Camojojo App and notify you. Meanwhile, it will save the original files in Hibird's memory card. You can get original videos or photos through Camojojo App and save them to your phone.

Thumbnail photos and videos transferred to Camojojo App will be saved for one year.

If you want to save them, please obtain their original files through Camojojo App and save them. Data stored in Hibird memory card will not be deleted.

Does Hibird provide AI-related functions?

Yes, Hibird currently supports bird species filtering and Dr.Bird (intelligent text interaction system). More AI functions are on the way and will be updated.

What is Dr.Bird?

Dr.Bird is an intelligent text interaction system that can act as your companion. You can ask it about bird-related knowledge or other topics, and it will reply to you in an interesting way. You can find it within the Camojojo App.

8. Precautions

The caution of the battery

The battery type of this product is a built-in lithium battery, which cannot be disassembled directly by the user. If repair is needed, it must be repaired by professional maintenance personnel or returned to the factory.

The caution of the product storage

When not in use, it needs to be taken back indoors to avoid long-term exposure to the sun and rain outdoors.

9. Supports

Warranty and customer service

Every Camojojo product purchased includes a free 24-month warranty and life time technical support. Our support team reply to all emails within 24 hours. In order for the free 24-month warranty to be effective, Camojojo products must have been purchased from our Amazon store or the Camojojo official online store. Thank you for choosing Camojojo!

Telephone:

(+1) 888 533 1006

(+49) 0 8001822893

Mon ~ Fri 9 A.M ~ 5 P.M CST

Email: support@camojojo.com

Official Site: www.caomojojo.com

Live Chat with Support:



10 Appendix

FCC Warning:

This equipment has been tested and found to comply with the limits for a Class B digital device, pursuant to part 15 of the FCC Rules. These limits are designed to provide reasonable protection against harmful interference in a residential installation. This equipment generates, uses and can radiate radio frequency energy and, if not installed and used in accordance with the instructions, may cause harmful interference to radio communications. However, there is no guarantee that interference will not occur in a particular installation. If this equipment does cause harmful interference to radio or television reception, which can be determined by turning the equipment off and on, the user is encouraged to try to correct the interference by one or more of the following measures:

- Reorient or relocate the receiving antenna.
- Increase the separation between the equipment and receiver.
- Connect the equipment into an outlet on a circuit different from that to which the receiver is connected.
- Consult the dealer or an experienced radio/TV technician for help.

Caution: Any changes or modifications to this device not explicitly approved by manufacturer could void your authority to operate this equipment.

This device complies with part 15 of the FCC Rules. Operation is subject to the following two conditions: (1) This device may not cause harmful interference, and (2) this device must accept any interference received, including interference that may cause undesired operation.

Radiation Exposure Statement

This equipment complies with FCC radiation exposure limits set forth for an uncontrolled environment. This equipment should be installed and operated with minimum distance 20cm between the radiator and your body.



This transmitter must not be co-located or operating in conjunction with any other antenna or transmitter.

camojojo

Bird Feeder Camera

Model: hibird

FCC ID: 2BD9Q-HIBIRD

DC input: 5V  2APVinput: 6V  2A12V  1.5A

IP66

Made in China



support@camojojo.com

