

成品尺寸：77x110mm
材质：105G双铜，正反面单色印刷，折页



BOLT MAGNETIC SPEAKER



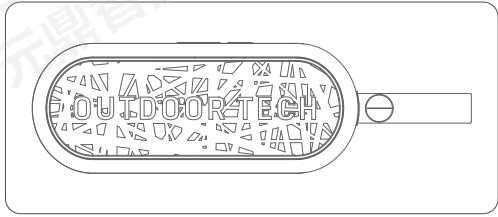
Good call on picking up the Outdoor Tech® Bolt Magnetic Speaker. Your experience of the universe will soon be enhanced wirelessly. This manual exists to help make sure that you use it correctly, so you're definitely going to want to relax for a hot second and look through this manual.



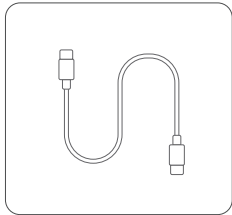
01

BLUETOOTH SPEAKER AND ACCESSORIES

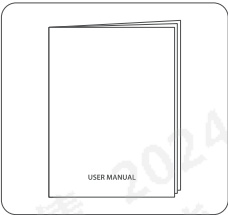
A: Bluetooth speaker
B: USB-C charging cable
C: User manual



A



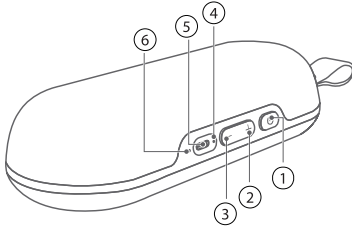
B



C

02

BASIC FUNCTION



- ① Long press: Power on/off
Short press one time: Play/Pause; Pick up/Hang up call
Short press 3 times: Protect call privacy; Reject incoming call; TWS connect/disconnect
- ② Short press one time: Volume "+"
Long press: Next song
- ③ Short press one time: Volume "-"
Long press: Previous song
- ②③ Short press: Bluetooth disconnection
- ④ Status indicator
- ⑤ USB-C Input & Output port
- ⑥ Calling MIC

03

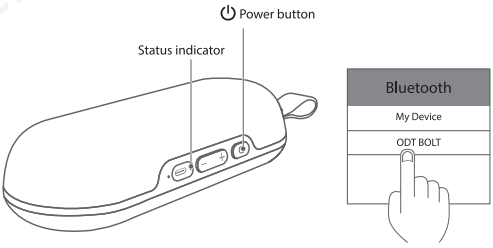
OPERATION

1. Power On/Off

Long press " " button to power on/off.

2. Bluetooth Mode

Long press " " button to power on with prompt tone. Speaker will enter into bluetooth pairing mode and the blue indicator light will flash. Choose "ODT BOLT" in your bluetooth list. There will be a prompt tone once connected successfully, and the blue indicator light will be solid. Now, you can play music.

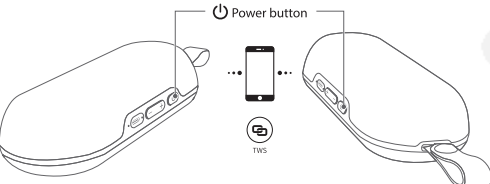


04

OPERATION

3. TWS Connection

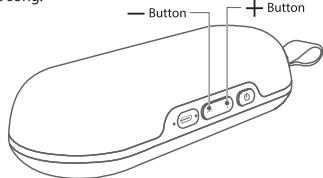
After Bolt is powered on but before connected with any device, short press " " button 3 times of either speaker to turn on TWS function. You will hear a prompt tone and the blue indicator light will flash. You will hear a "du" sound once paired successfully. The indicator light of the paired speaker will remain solid blue and the master speaker indicator light will flash blue. Now you can connect the paired speakers to your device that plays music.



4. Volume Control

Short press " " button one time for volume up, there will be prompt tone when the speaker reaches maximum volume. Long press " " button for next song.

Short press " " button one time for volume down. Long press " " button for previous song.

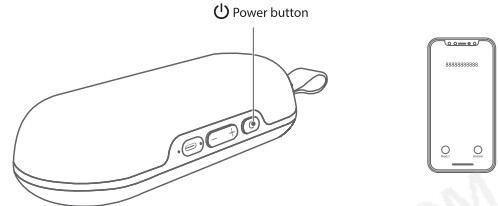


05

OPERATION

5. Receiving Calls

When a call is coming in, short press " " to answer. To decline a call, short press " " button 3 times.
During a call, short press " " button to hang up. To move hands-free call to private call, short press " " button 3 times.



06

OPERATION

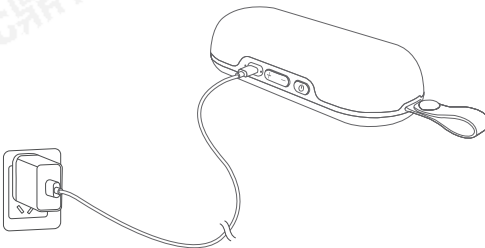
6. Power Saving

Speaker will power off automatically after 10 minutes of not being paired with a connected device.

7. Charging

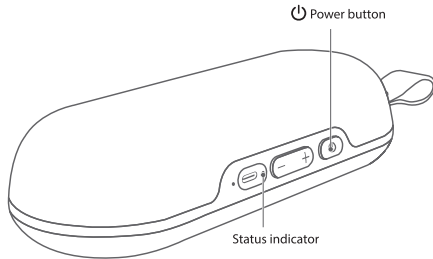
Important note:

Use supplied USB-C charging cable.
Use an output source 5V/2A (or above).
Charge when you hear low battery prompt tone or the Indicator light flash red.
The red indicator light will remain solid while charging and switch off when Bolt is fully charged.



07

FUNCTION INSTRUCTIONS



Status indicator	Power on/ TWS (blue indicator)
	Low battery (red indicator flash)
	Charging (red indicator remains solid)
	Fully charged (red indicator off)

08

SPECIFICATIONS

Product Name	ODT BOLT
Bluetooth Version	5.3
Battery Capacity	3.7V/2600mAh
Playing Time	8 hours
Charging Time	2 hours
Charging Input & Output	5V \pm 2A
Speaker Unit	8W x2
Product Size	199 x 80 x 47.2mm
Product Weight	501g \pm 50

09

FREQUENTLY ASKED QUESTIONS

Q1: What kind of charger should we use for the speaker?

A: All common USB chargers can be used, but we suggest USB chargers with 5V/2A or above.

Q2: What if there is noise or discontinuous sound while playing music?

A: The speaker will operate normally if used within 10M of the paired device and no obstructions exist. If placed beyond 10M and/or with obstruction, sound quality might be impacted.

Q3: Why does the speaker power off automatically?

A: When there is no Bluetooth pairing for 10 minutes, the speaker will shut off automatically to conserve the battery.

Q4: Why is the speaker not connecting to my paired cell phone?

A: Remove ODT Bolt from the paired Bluetooth list on your phone and then restart pairing.

Q5: What if my speaker will not turn on?

A: Please charge it for an hour or more, then long press the power on button for 10-30 seconds to reset the speaker.

If you have any other questions or need support operating your Bolt speaker, please reach out to support@outdoortech.com.

10

IMPORTANT PRODUCT FACTS

Notes:

- Please read this manual carefully before use.
- Please fully charge Bolt before the first use.
- Please use a certified power adapter that has passed nation safety certification.
- Please charge Bolt once a month to maintain battery performance.
- Do not operate Bolt in extremely hot or cold temperatures. Temperatures beyond 5 C-35 C range could force the speaker to automatically shut off to protect the internal circuit.
- When charging Bolt in a high temperature environment, the product may automatically stop charging to protect the battery. At this time, the charging indicator usually ashes quickly to indicate that the charging environmental temperature or the product internal temperature is too high.
- Storage environment temperature: -5 ~ 35 C RH < 70% (recommended 25 C \pm 5).

Important safety instructions:

- Do not disassemble or repair this speaker personally, otherwise it may cause product damage or personal injury.
- Do not use it in dusty, humid, dry, and high-temperature environment.
- Do not place this product near a heat source, or a place with direct sunlight, a lot of dust, or mechanical vibration.
- In order to reduce the risk of fire, please do not cover this product with newspapers, tablecloths, curtains etc., during use.
- If the product has a waterproof feature, please do not exceed the nominal parameter range when using it.
- When the product is damaged (such as the power cord or plug is damaged, liquid enters or objects fall into the device, unable to operate normally or falls), it must be repaired.
- When the product is fully charged, do not connect it to the charger for further long time charging.
- The maximum ambient temperature should not exceed 40°C.

*This speaker supports mobile phones/ tablets/ PCs etc. This user manual is illustrated with mobile phones.

11

FCC Statement

This device complies with part 15 of the FCC rules. Operation is subject to the following two conditions: (1) this device may not cause harmful interference, and (2) this device must accept any interference received, including interference that may cause undesired operation.

Changes or modifications not expressly approved by the party responsible for compliance could void the user's authority to operate the equipment.

NOTE: This equipment has been tested and found to comply with the limits for a Class B digital device, pursuant to part 15 of the FCC Rules. These limits are designed to provide reasonable protection against harmful interference in a residential installation. This equipment generates uses and can radiate radio frequency energy and, if not installed and used in accordance with the instructions, may cause harmful interference to radio communications. However, there is no guarantee that interference will not occur in a particular installation. If this equipment does cause harmful interference to radio or television reception, which can be determined by turning the equipment off and on, the user is encouraged to try to correct the interference by one or more of the following measures:

- Reorient or relocate the receiving antenna.
- Increase the separation between the equipment and receiver.
- Connect the equipment into an outlet on a circuit different from that to which the receiver is connected.
- Consult the dealer or an experienced radio/TV technician for help.

The device has been evaluated to meet general RF exposure requirement. The device can be used in portable exposure condition without restriction.