

# **FCC Label & Label Location**

**AMI-I210-TL-ME9-SP**

**Cellular NICs**

**By EASYMETERING,LLC**

# Version History

Revision	Date	Author	Description
1.0	26/2/2024	Victor Lucio	Initial

---

# Project Information

Document #	ezM-HW_FCCLABEL_12182023
Organization	Easymetering LLC
Project Name	FCC Label & Label Location
Preparation Date	12/18/2023
Main Sponsor	Byron Rojas
Project Leader	Jonathan Cagua

# Content Table

- Version History.....2**
- Project Information.....2**
- Copyright.....4**
- 1. Introduction.....5**
- 3. NIC Labels.....6**
  - 3.1. Project Label..... 6
  - 3.2. EASYMETERING Production Label.....7
  - 3.3 Internal FCC Certification Label..... 7

# Copyright

©2020 by EASYMETERING, LLC. All rights are reserved.

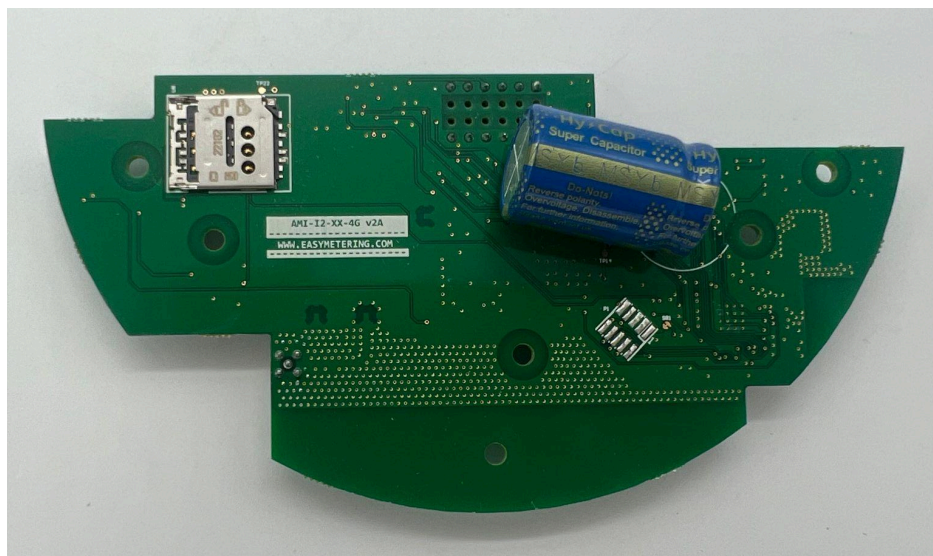
No part of this documentation may be reproduced, transmitted, processed or recorded by any means or form, electronic, mechanical, photographic or otherwise, translated to another language, or be released to any third party without the express written consent of EASYMETERING, LLC.

Document number:

All third party trademarks are the property of their respective owners.

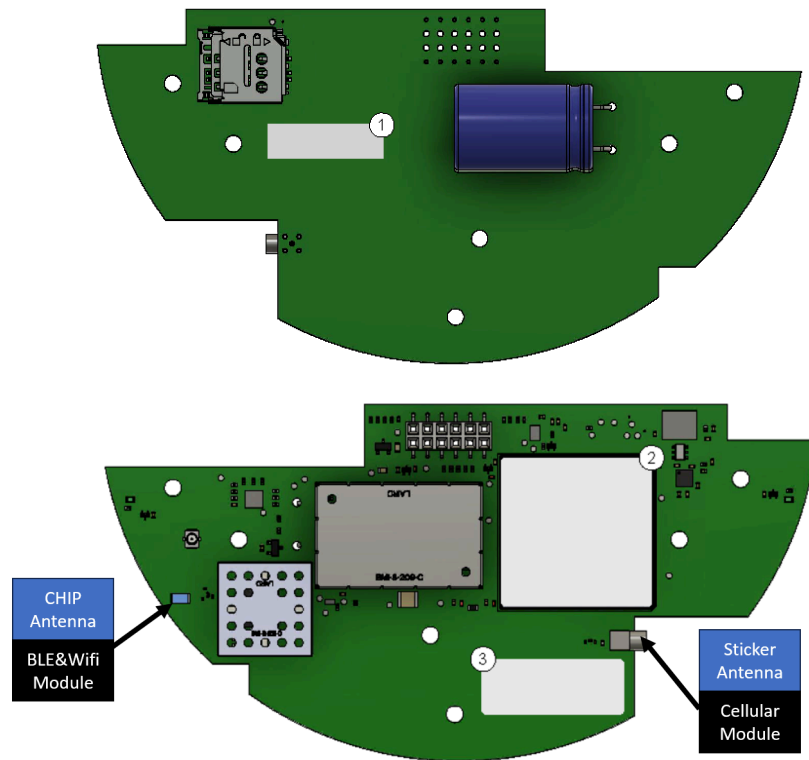
# 1. Introduction

The AMI-I210-TL-ME9-SP NIC is FCC certified with ID: 2BD5W-I210-ME9-SP. These NICs allow the transmission and exchange of information between I210+C electricity meters.



### 3. NIC Labels

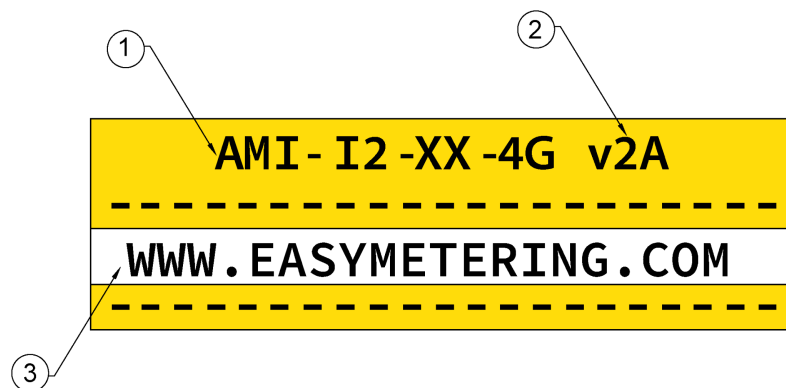
1. Project Label.
2. EASYMETERING Production Label.
3. Internal FCC Certification Label.



#### 3.1. Project Label.

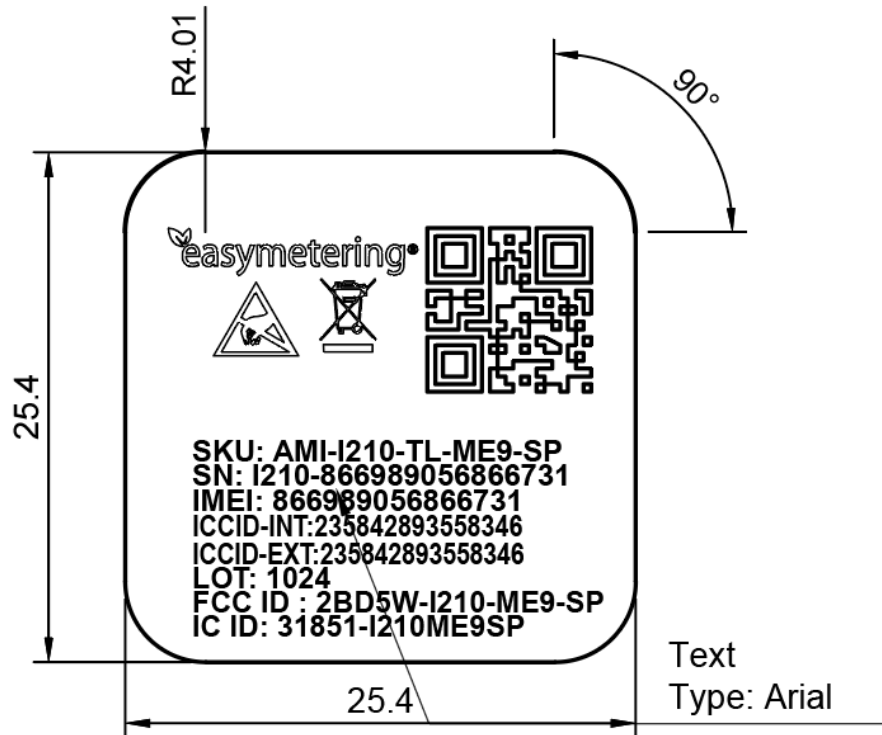
This legend is printed on the **TopOverlay** Layer of the AMI-I210-TL-ME9-SP NIC, the information contained is detailed in the following illustration:

1. NIC Model.
2. Hardware version.
3. EASYMETERING website.



### 3.2. EASYMETERING Production Label.

This label is located on the Cell Module and contains information from the AMI NIC, such as the Model, Serial Number, the IMEI of the Cell Module, its Internal and External SIM, date of production, FCC ID, etc.



### 3.3 Internal FCC Certification Label.

This label will be located on the NIC below the Cell Module.

- **Text Size:** 5 pt.
- **Text Font:** Arial Regular.
- **FCC Label Material:** White Matte Thermal Matte Plastic.

**FCC ID: 2BD5W-I210-ME9-SP**  
**IC ID: 31851-I210ME9SP**  
**HVIN:V2A**