



Shenzhen CTL Testing Technology Co., Ltd.
Tel: +86-755-89486194 E-mail: ctl@ctl-lab.com

TEST REPORT

47 CFR FCC Part 15 Subpart C 15.231

Report Reference No. : CTL2406212041-WF

Compiled by:
(position+printed name+signature)

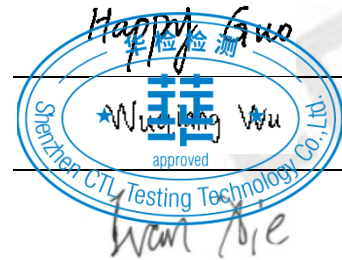
Happy Guo
(File administrators)

Tested by:
(position+printed name+signature)

Wuqiang Wu
(Test Engineer)

Approved by:
(position+printed name+signature)

Ivan Xie
(Manager)



Product Name : 82090 RVENTURE - TIRE MONITORING SYSTEM

Model/Type reference : 82090

List Model(s)..... : N/A

Trade Mark..... : N/A

FCC ID : 2BD4W-82090

Applicant's name : Black Swan Manufacturing Inc

Address of applicant : 227-8680 Cambie Road, Richmond, BC V6X4K1, Canada

Test Firm..... : Shenzhen CTL Testing Technology Co., Ltd.

Address of Test Firm : Floor 1-A, Baisha Technology Park, No.3011, Shahexi Road,
Nanshan District, Shenzhen, China 518055

Test specification..... :

Standard : 47 CFR FCC Part 15 Subpart C 15.231

TRF Originator : Shenzhen CTL Testing Technology Co., Ltd.

Master TRF..... : Dated 2011-01

Date of receipt of test item : Jun. 24, 2024

Date of Test Date..... : Jun. 24, 2024- Aug. 14, 2024

Date of Issue : Aug. 15, 2024

Result : Pass

Shenzhen CTL Testing Technology Co., Ltd. All rights reserved.

This publication may be reproduced in whole or in part for non-commercial purposes as long as the Shenzhen CTL Testing Technology Co., Ltd. is acknowledged as copyright owner and source of the material. Shenzhen CTL Testing Technology Co., Ltd. takes no responsibility for and will not assume liability for damages resulting from the reader's interpretation of the reproduced material due to its placement and context.

TEST REPORT

Test Report No. :	CTL2406212041-WF	Aug. 15, 2024
		Date of issue

Equipment under Test : 82090 RVENTURE - TIRE MONITORING SYSTEM

Sample No. : CTL2406212041

Model /Type : 82090

Listed Models : N/A

Applicant : **Black Swan Manufacturing Inc**

Address : 227-8680 Cambie Road, Richmond, BC V6X4K1, Canada

Manufacturer : **Shing Chuen Plastic Product Company Ltd**

Address : NO.3 FUDONG 2ND STREET,FUZHUSHAN,LIAOBU
TOWN,DONGGUAN CITY,GUANGDONG, CHINA 523406

Test result	Pass *
--------------------	---------------

* In the configuration tested, the EUT complied with the standards specified page 5.

The test results presented in this report relate only to the object tested.

This report shall not be reproduced, except in full, without the written approval of the issuing testing laboratory.

** Modified History **

[illegible]

Table of Contents

Page

1. SUMMARY	5
1.1. TEST STANDARDS	5
1.2. TEST DESCRIPTION	5
1.3. TEST FACILITY	6
1.4. STATEMENT OF THE MEASUREMENT UNCERTAINTY	6
2. GENERAL INFORMATION.....	8
2.1. ENVIRONMENTAL CONDITIONS	8
2.2. GENERAL DESCRIPTION OF EUT.....	8
2.3. DESCRIPTION OF TEST MODES AND TEST FREQUENCY	8
2.4. EQUIPMENTS USED DURING THE TEST.....	8
2.5. RELATED SUBMITTAL(S) / GRANT (s)	9
2.6. MODIFICATIONS	9
3. TEST CONDITIONS AND RESULTS.....	10
3.1. RADIATED EMISSION.....	10
3.2. 20dB BANDWIDTH	16
3.3. DEACTIVATION TIME.....	18
3.4. ANTENNA REQUIREMENT	19
4. TEST SETUP PHOTOS OF THE EUT	20
5. EXTERNAL AND INTERNAL PHOTOS OF THE EUT	21

1. SUMMARY

1.1. Test Standards

The tests were performed according to following standards:

[FCC Rules Part 15.231:](#) Periodic operation in the band 40.66-40.70 MHz and above 70 MHz.

[ANSI C63.10:2013](#) : American National Standard for Testing Unlicensed Wireless Devices

1.2. Test Description

FCC and IC Requirements		
FCC Part 15.207	Conducted Emission	N/A
FCC Part 15.231(a)(1)	Automatically Deactivate	PASS
FCC Part 15.231(b)	Electric Field Strength of Fundamental Emission	PASS
FCC Part 15.205 & 15.209 & 15.231(b)	Electric Field Strength of Spurious Emission	PASS
FCC Part 15.215	-20dB bandwidth	PASS
FCC Part 15.203	Antenna requirement.	PASS

Remark: The measurement uncertainty is not included in the test result.

1.3. Test Facility

1.3.1 Address of the test laboratory

Shenzhen CTL Testing Technology Co., Ltd.

Floor 1-A, Baisha Technology Park, No.3011, Shahexi Road, Nanshan District, Shenzhen, China 518055

There is one 3m semi-anechoic chamber and two line conducted labs for final test. The Test Sites meet the requirements in documents ANSI C63.4 and CISPR 32/EN 55032 requirements.

1.3.2 Laboratory accreditation

The test facility is recognized, certified, or accredited by the following organizations:

CNAS-Lab Code: L7497

Shenzhen CTL Testing Technology Co., Ltd. has been assessed and proved to be in compliance with CNAS-CL01 Accreditation Criteria for Testing and Calibration Laboratories (identical to ISO/IEC 17025: 2017 General Requirements) for the Competence of Testing and Calibration Laboratories.

A2LA-Lab Cert. No. 4343.01

Shenzhen CTL Testing Technology Co., Ltd, EMC Laboratory has been accredited by A2LA for technical competence in the field of electrical testing, and proved to be in compliance with ISO/IEC 17025: 2017 General Requirements for the Competence of Testing and Calibration Laboratories and any additional program requirements in the identified field of testing.

IC Registration No.: 9618B

CAB identifier: CN0041

The 3m alternate test site of Shenzhen CTL Testing Technology Co., Ltd. EMC Laboratory has been registered by Innovation, Science and Economic Development Canada to test to Canadian radio equipment requirements with Registration No.: 9618B.

FCC-Registration No.: 399832

Designation No.: CN1216

Shenzhen CTL Testing Technology Co., Ltd. EMC Laboratory has been registered and fully described in a report filed with the (FCC) Federal Communications Commission. The acceptance letter from the FCC is maintained in our files. Registration 399832.

1.4. Statement of the measurement uncertainty

The data and results referenced in this document are true and accurate. The reader is cautioned that there may be errors within the calibration limits of the equipment and facilities. The measurement uncertainty was calculated for all measurements listed in this test report acc. to CISPR 16 - 4 "Specification for radio disturbance and immunity measuring apparatus and methods – Part 4: Uncertainty in EMC Measurements" and is documented in the Shenzhen CTL Testing Technology Co., Ltd. quality system acc. to DIN EN ISO/IEC 17025. Furthermore, component and process variability of devices similar to that tested may result in additional deviation. The manufacturer has the sole responsibility of continued compliance of the device.

Hereafter the best measurement capability for CTL laboratory is reported:

Test	Measurement Uncertainty	Notes
Transmitter power Radiated	± 2.20 dB	(1)
Radiated Emission 9KHz~30MHz	± 3.66 dB	(1)
Radiated Emission 30~1000MHz	± 4.08 dB	(1)
Radiated Emission Above 1GHz	± 4.32 dB	(1)

DTS Bandwidth	$\pm 1.9\%$	(1)
Maximum Conducted Output Power	$\pm 1.18 \text{ dB}$	(1)
Maximum Power Spectral Density Level	$\pm 0.98 \text{ dB}$	(1)
Band-edge	$\pm 1.21 \text{ dB}$	(1)
Unwanted Emissions In Non-restricted Freq Bands	9kHz-7GHz: $\pm 1.09 \text{ dB}$ 7GHz-26.5GHz: $\pm 3.27 \text{ dB}$	(1)

(1) This uncertainty represents an expanded uncertainty expressed at approximately the 95%

(2) confidence level using a coverage factor of $k=1.96$.

2. GENERAL INFORMATION

2.1. Environmental conditions

During the measurement the environmental conditions were within the listed ranges:

Normal Temperature:	25°C
Relative Humidity:	55 %
Air Pressure:	101 kPa

2.2. General Description of EUT

Product Name:	82090 RVENTURE - TIRE MONITORING SYSTEM
Model/Type reference:	82090
Power supply:	DC 3.0V for battery
Wireless technology	
Operating frequency:	433.92MHz
Modulation type:	ASK
Antenna type:	PCB Antenna
Antenna Gain:	0 dBi

Note: For more details, please refer to the user's manual of the EUT.

2.3. Description of Test Modes and Test Frequency

The EUT was tested under typical operating condition. The applicant provides drivers to make it work in general use, and software can obtain data from it to see if it works intended during testing.

2.4. Equipments Used during the Test

Conducted Emission						
Item	Test Equipment	Manufacturer	Model No.	Serial No.	Last Cal.	Cal.Due
EMI Test Receiver	ROHDE & SCHWARZ	ESCI	1166.5950.03	2024/04/30	2025/04/29	
LISN	ROHDE & SCHWARZ	ESH2-Z5	860014/010	2024/04/30	2025/04/29	
Limitator	ROHDE & SCHWARZ	ESH3-Z2	100408	2024/04/30	2025/04/29	
Software:						
Name of Software:				Version:		
ES-K1				V1.71		

Radiated Emissions and Band Edge

Test Equipment	Manufacturer	Model No.	Serial No.	Calibration Date	Calibration Due Date
Active Loop Antenna	Da Ze	ZN30900 A	/	2024/04/30	2025/04/29
Double cone logarithmic antenna	Schwarzbeck	VULB 9168	824	2023/02/13	2026/02/12
Horn Antenna	Sunol Sciences Corp.	DRH-118	A062013	2021/12/23	2024/12/22
Horn Antenna	Ocean Microwave	OBH1004 00	26999002	2021/12/22	2024/12/21
Amplifier	MRT-AP01M06	MRT	S-001	2024/04/30	2025/04/29
Amplifier	Agilent	8449B	3008A02306	2024/04/30	2025/04/29
Amplifier	Brief&Smart	LNA-4018	2104197	2024/05/03	2025/05/02
EMI Test Receiver	ROHDE & SCHWARZ	ESCI	1166.5950.03	2024/04/30	2025/04/29
Spectrum Analyzer	RS	FSP	1164.4391.38	2024/05/03	2025/05/02
Test software					
Name of Software			Version		
EZ_EMG(Below 1GHz)			V1.1.4.2		
EZ_EMG(Above 1GHz)			V1.1.4.2		

Automatically Deactivate & -20dB bandwidth					
Test Equipment	Manufacturer	Model No.	Serial No.	Calibration Date	Calibration Due Date
Spectrum Analyzer	Keysight	N9020A	MY53420874	2024/05/01	2025/04/30
Temperature/Humidity Meter	Ji Yu	MC501	/	2024/05/04	2025/05/03
Test Software					
Name of Software			Version		
TST-PASS			V2.0		

2.5. Related Submittal(s) / Grant (s)

This submittal(s) (test report) is intended to comply with Section 15.231 of the FCC Part 15, Subpart C Rules.

2.6. Modifications

No modifications were implemented to meet testing criteria.

3. TEST CONDITIONS AND RESULTS

3.1. Radiated Emission

Limit

For intentional device, according to 15.209(a) the general requirement of field strength of radiated emission from intentional radiators at a distance of 3 meters shall not exceed the following table.

Frequency (MHz)	Distance (Meters)	Radiated (dB μ V/m)	Radiated (μ V/m)
0.009-0.49	3	$20\log(2400/F(\text{KHz}))+40\log(300/3)$	$2400/F(\text{KHz})$
0.49-1.705	3	$20\log(24000/F(\text{KHz}))+40\log(30/3)$	$24000/F(\text{KHz})$
1.705-30	3	$20\log(30)+40\log(30/3)$	30
30-88	3	40.0	100
88-216	3	43.5	150
216-960	3	46.0	200
Above 960	3	54.0	500

In addition to the provisions of 15.231 (b) and RSS 210-A1. 1. 2, the field strength of emissions from intentional radiators operated under this section shall not exceed the following:

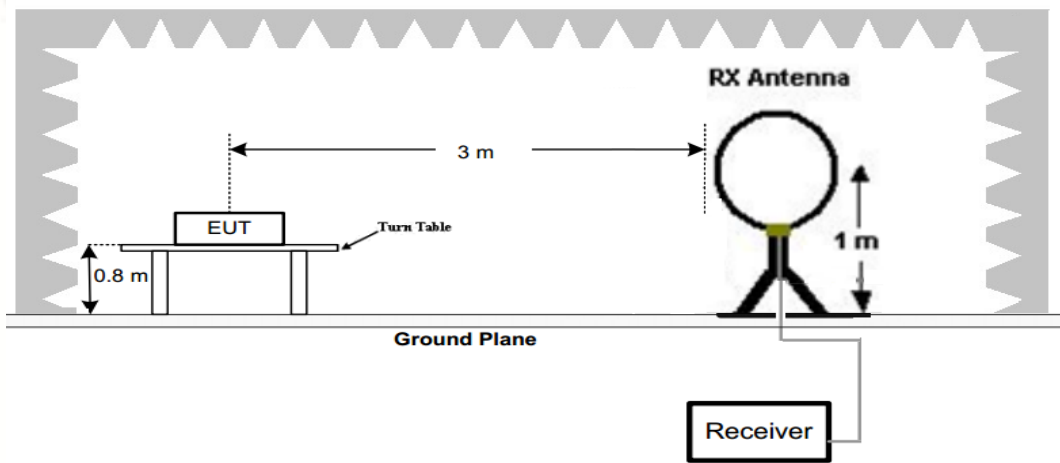
Funda-mental fre-quency (MHz)	Field strength of funda-mental (microvolts/ meter)	Field strength of spurious emissions (microvolts/meter)
40.66– 40.70.	2,250	225
70–130	1,250	125
130–174	¹ 1,250 to 3,750	¹ 125 to 375
174–260	3,750	375
260–470	¹ 3,750 to 12,500	¹ 375 to 1,250
Above 470	12,500	1,250

¹ Linear interpolations.

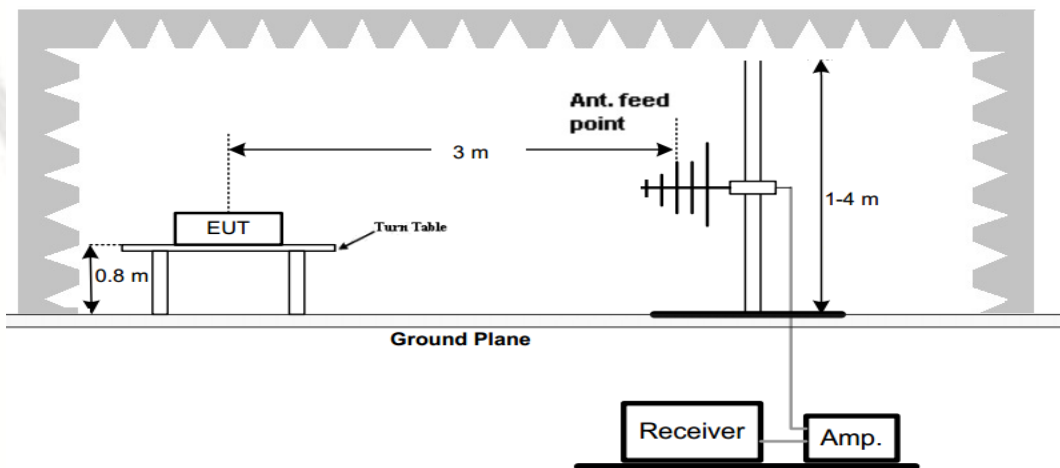
[Where F is the frequency in MHz, the formulas for calculating the maximum permitted fundamental field strengths are as follows: for the band 260-470 MHz, $\mu\text{V/m}$ at 3 meters $=41.6667(F) - 7083.3333$. The maximum permitted unwanted emission level is 20 dB below the maximum permitted fundamental level.]

TEST CONFIGURATION

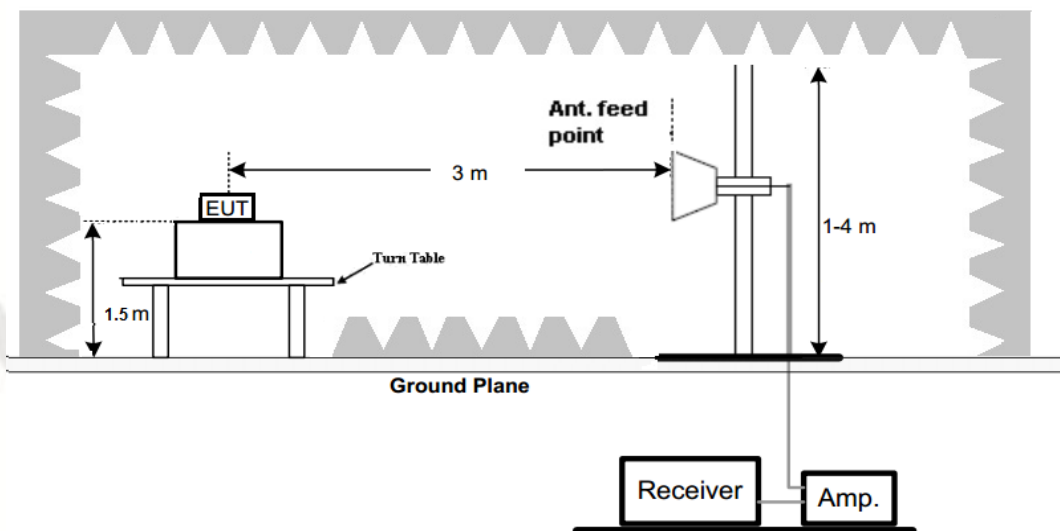
(A) Radiated Emission Test Set-Up, Frequency Below 30MHz



(B) Radiated Emission Test Set-Up, Frequency below 1000MHz



(C) Radiated Emission Test Set-Up, Frequency above 1000MHz



Test Procedure

1. Below 1GHz measurement the EUT is placed on a turntable which is 0.8m above ground plane, and above 1GHz measurement EUT was placed on a low permittivity and low loss tangent turn table which is 1.5m above ground plane.

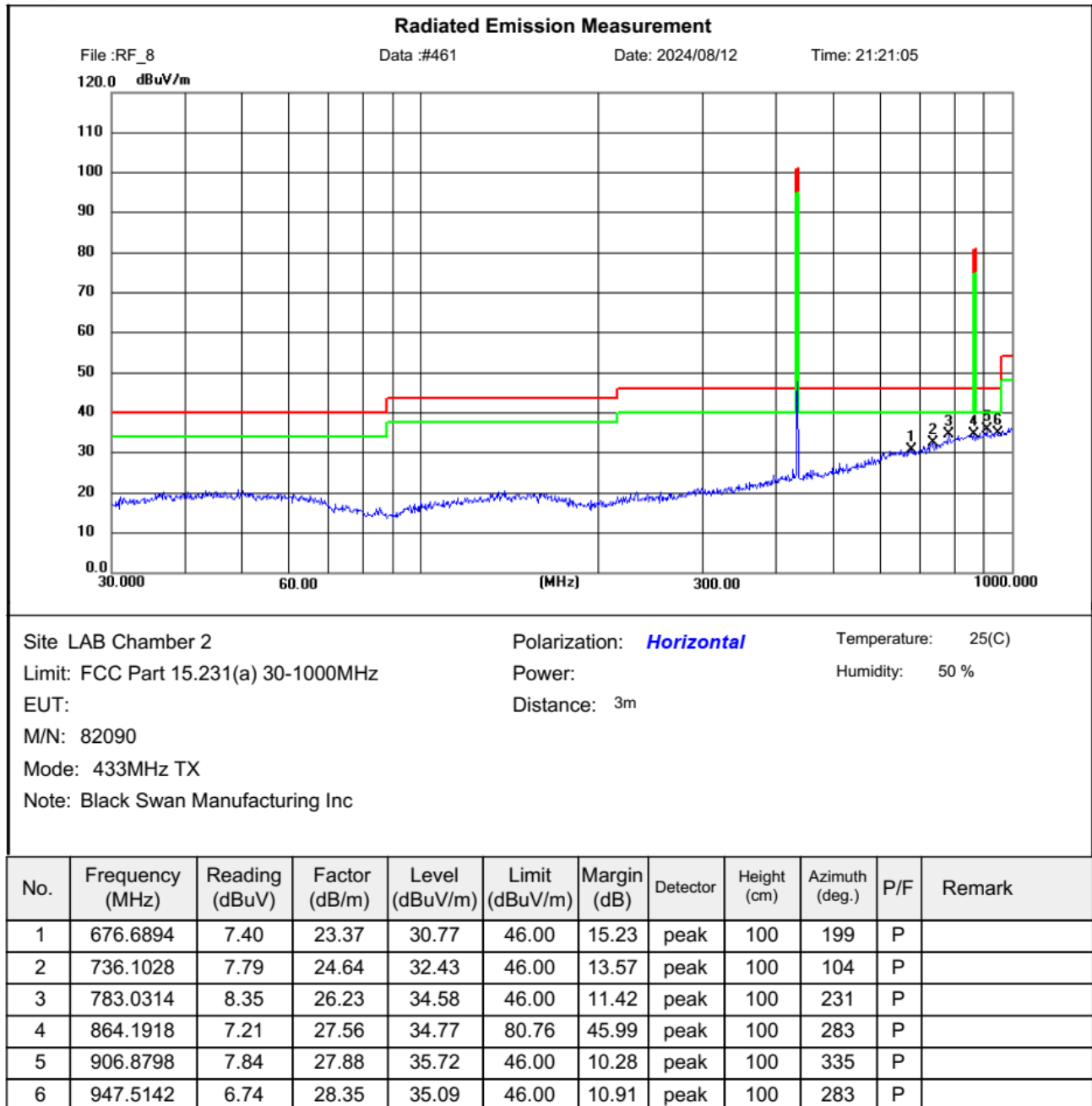
2. Maximum procedure was performed by raising the receiving antenna from 1m to 4m and rotating the turn table from 0° to 360° to acquire the highest emissions from EUT
3. And also, each emission was to be maximized by changing the polarization of receiving antenna both horizontal and vertical.
4. Repeat above procedures until all frequency measurements have been completed.

TEST RESULTS

The emissions from 30MHz to 5GHz are measured with PEAK detector; and average level calculated with Duty cycle correction according 15.35(c), detailed test data please see below. Besides, we tested 3 directions and recorded the worst data



Shenzhen CTL Testing Technology Co., Ltd
Tel: +86-755-89486194





Shenzhen CTL Testing Technology Co., Ltd
Tel: +86-755-89486194

Radiated Emission Measurement

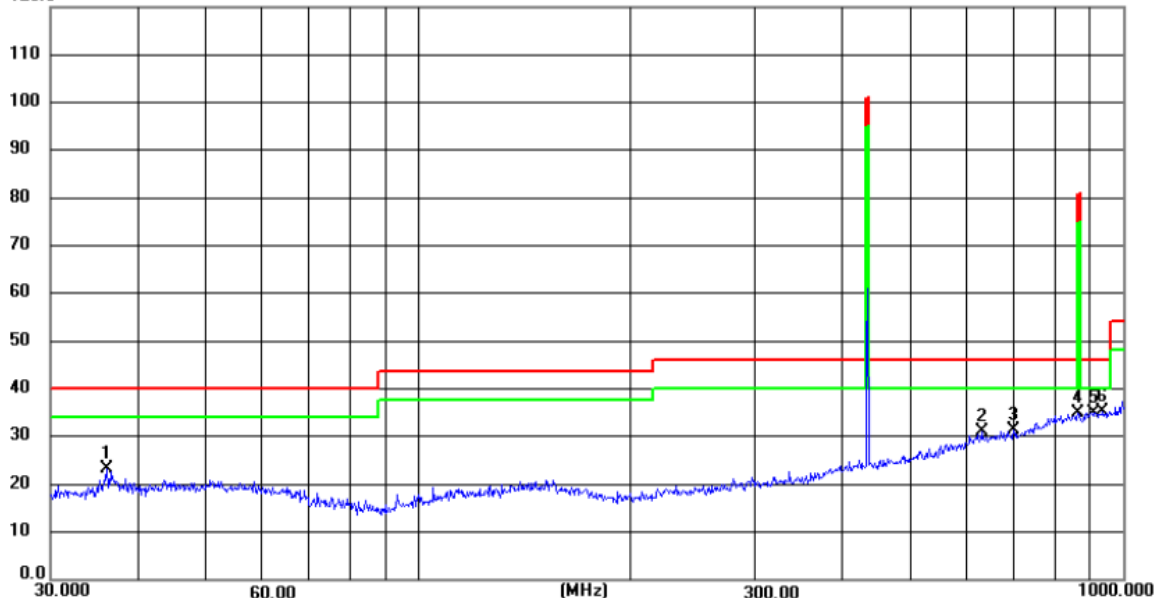
File :RF_8

Data :#462

Date: 2024/08/12

Time: 21:22:08

120.0 dBuV/m



Site LAB Chamber 2

Limit: FCC Part 15.231(a) 30-1000MHz

EUT:

M/N: 82090

Mode: 433MHz TX

Note: Black Swan Manufacturing Inc

Polarization: **Vertical**

Power:

Distance: 3m

Temperature: 25(C)

Humidity: 50 %

No.	Frequency (MHz)	Reading (dBuV)	Factor (dB/m)	Level (dBuV/m)	Limit (dBuV/m)	Margin (dB)	Detector	Height (cm)	Azimuth (deg.)	P/F	Remark
1	36.1113	9.00	14.30	23.30	40.00	16.70	peak	100	267	P	
2	629.7532	7.77	23.28	31.05	46.00	14.95	peak	100	45	P	
3	700.5317	7.76	23.49	31.25	46.00	14.75	peak	100	99	P	
4	865.3290	7.39	27.54	34.93	80.78	45.85	peak	100	120	P	
5	907.2774	7.20	27.88	35.08	46.00	10.92	peak	100	257	P	
6	938.0100	7.06	28.33	35.39	46.00	10.61	peak	100	204	P	

Emission Styles	Frequency (MHz)	Reading (dBuV/m)	Limit (dBuV/m)	Margin (dB)	Detector	Direction (H/V)
Fundamental	433.92	46.84	100.82	53.98	PK	H
Spurious	459.67	35.57	46.00	10.43	PK	H
Harmonics	867.84	34.77	80.82	46.05	PK	H
Harmonics	1311.76	40.99	80.82	39.83	PK	H
Harmonics	1745.68	43.55	80.82	37.27	PK	H
--	--	--	--	--	--	--
Fundamental	433.92	63.24	100.82	37.58	PK	V
Spurious	465.90	36.46	46.00	9.54	PK	V

Harmonics	867.84	34.93	80.82	45.89	PK	V
Harmonics	1311.76	41.92	80.82	38.9	PK	V
Harmonics	1745.68	47.87	80.82	32.95	PK	V
--	--	--	--	--	--	--

Emission Styles	Frequency (MHz)	PK Level (dBuV/m)	AV Factor (dB/m)	AV Level (dBuV/m)	Limit (dBuV/m)	Margin (dB)	Direction (H/V)
Fundamental	433.92	46.84	-0.63	46.21	80.82	33.98	H
Spurious	459.67	35.57	-0.63	34.94	46	10.43	H
Harmonics	867.84	34.77	-0.63	34.14	60.82	26.05	H
Harmonics	1311.76	40.99	-0.63	40.36	60.82	19.83	H
Harmonics	1745.68	43.55	-0.63	42.92	60.82	17.27	H
--	--	--	--	--	--	--	--
Fundamental	433.92	63.24	-0.63	62.61	80.82	17.58	V
Spurious	465.90	36.46	-0.63	35.83	46	9.54	V
Harmonics	867.84	34.93	-0.63	34.3	60.82	25.89	V
Harmonics	1311.76	41.92	-0.63	41.29	60.82	18.9	V
Harmonics	1745.68	47.87	-0.63	47.24	60.82	12.95	V
--	--	--	--	--	--	--	--

Note:

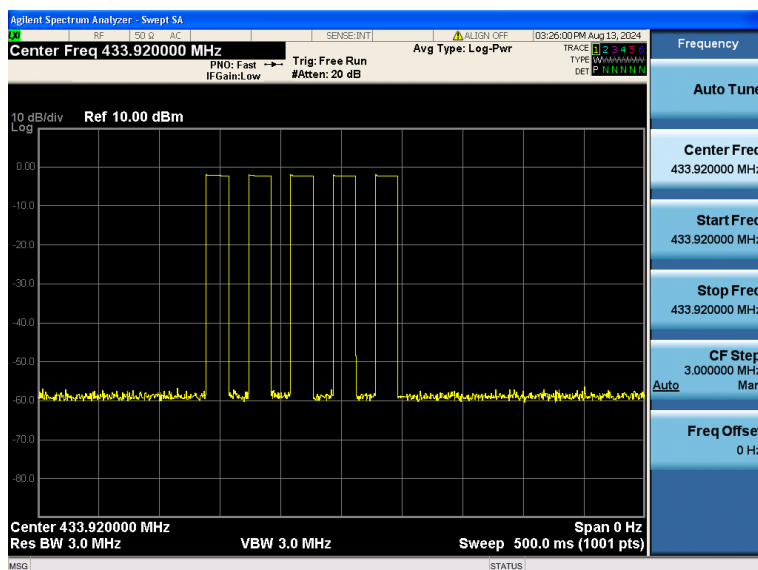
1. AV Level (dBuV/m)= PK Level (dBuV/m)+ AV Factor(dB)
2. Duty Cycle= (18.60*5)/100=0.93

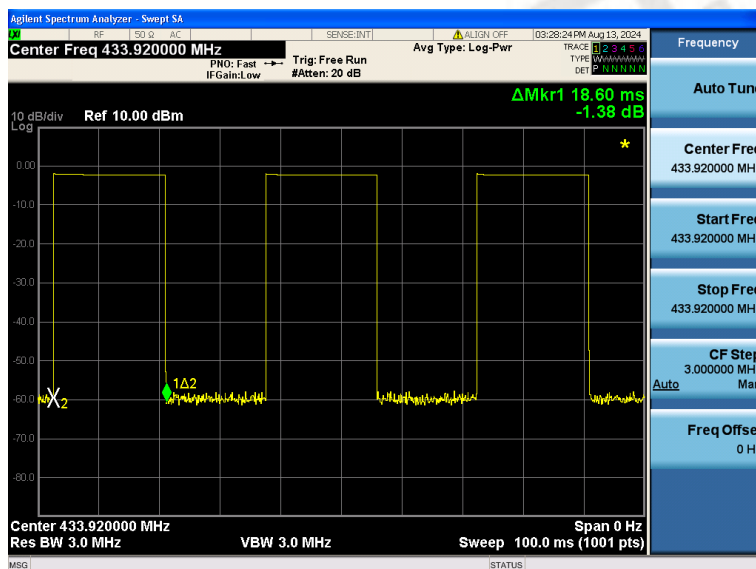
$$AV \text{ Factor} = 20 * \log(\text{Duty Cycle}) = -0.63$$

(Note: According to C63.10, if the transmit cycle period longer than 100ms, then 100ms is used calculation.)

$$AV \text{ Factor} = 20 * \log(\text{Duty Cycle}) = -0.63$$

(The plot of Duty Cycle See the follow page)





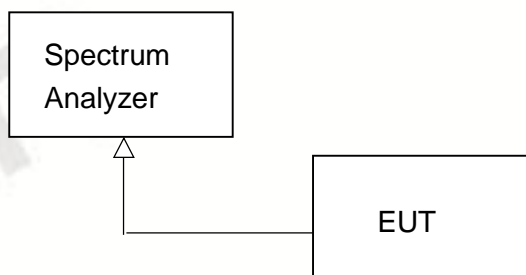
(93% Duty Cycle in 100ms)

3.2. 20dB Bandwidth

Limit

According to 47 CFR 15.215 The bandwidth of the emission shall be no wider than 0.25% of the centre frequency for devices operating above 70MHz and below 900MHz. Bandwidth is determined at the points 20dB down from the modulated carrier.

Test Configuration



Test Procedure

The 20dB bandwidth and 99% bandwidth is measured with a spectrum analyzer connected via a receive antenna placed near the EUT while the EUT is operating in transmission mode.

The 20dB bandwidth is defined as the total spectrum the power of which is higher than peak power minus 20dB.

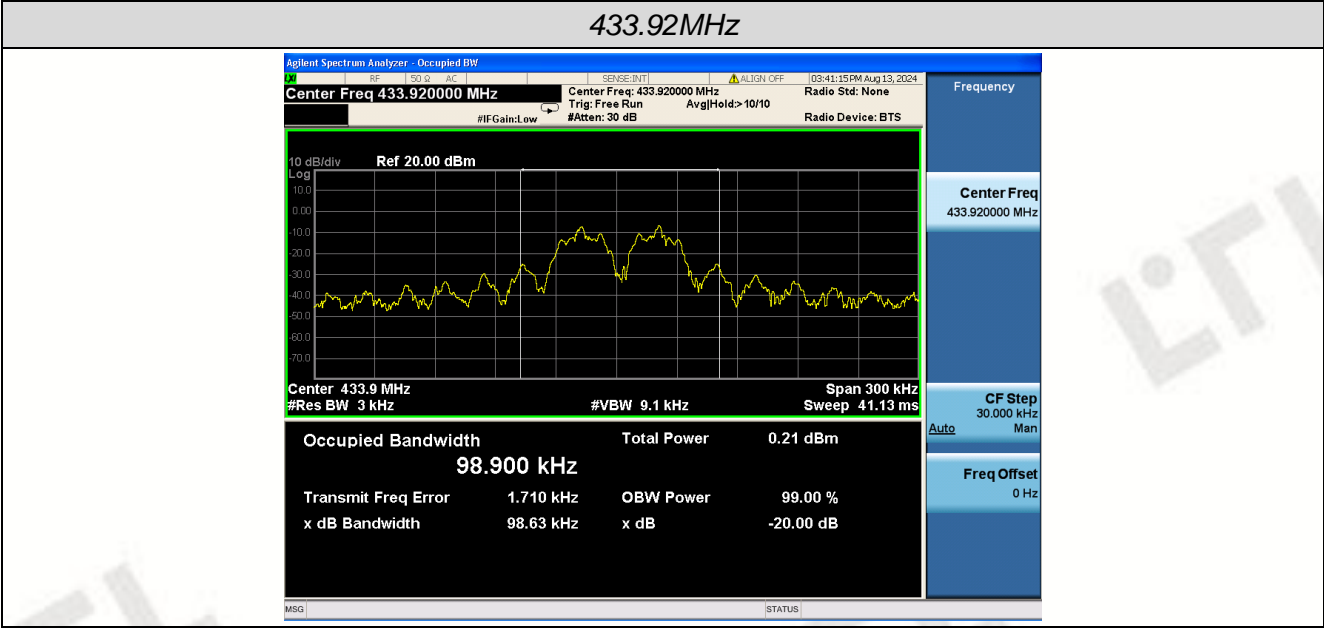
The occupied bandwidth (OBW), that is the frequency bandwidth such that, below its lower and above its upper frequency limits, the mean powers radiated are each equal to 0.5 percent of the total mean power radiated by a given emission.

Test Results

Modulation	Channel Frequency (MHz)	99% OBW (kHz)	20dB bandwidth (kHz)	Limit (kHz)	Result
------------	-------------------------	---------------	----------------------	-------------	--------

ASK	433.92	98.9	98.63	$0.25\% \times 433920 = 1084.8$	Pass
-----	--------	------	-------	---------------------------------	------

Test plot as follows:

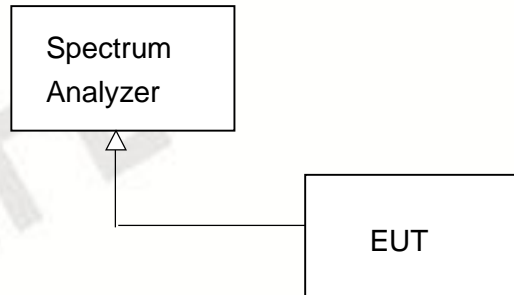


3.3. Dwell Time

Limit

According to FCC § 15.231 (a) (1), A manually operated transmitter shall employ a switch that will automatically deactivate the transmitter within not more than 5 seconds of being released.

Test Configuration



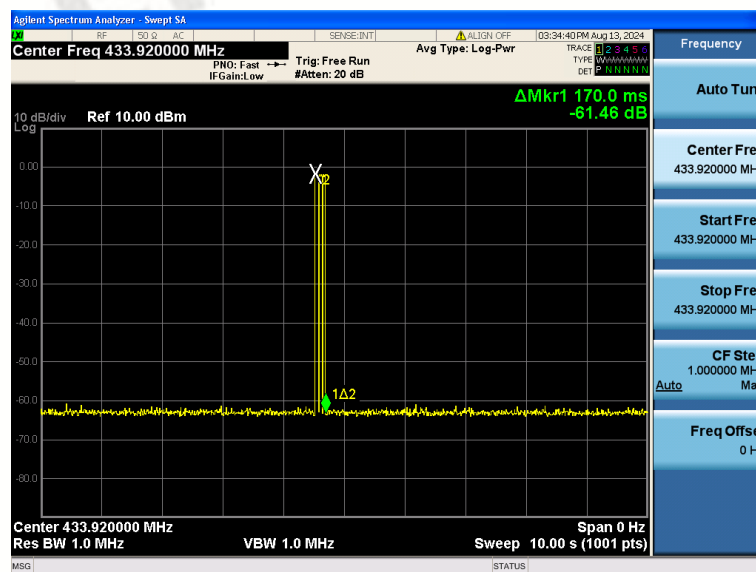
Test Procedure

1. The EUT was placed on a wooded table which is 0.8m height and close to receiver antenna of spectrum analyzer.
2. The spectrum analyzer resolution bandwidth was set to 1 MHz and video bandwidth was set to 1 MHz to encompass all significant spectral components during the test. The spectrum analyzer was operated in linear scale and zero span mode after tuning to the transmitter carrier frequency.

TEST RESULTS

Note : Multiple groups of channels are tested, only the poor frequencies are recorded, other frequencies meet the requirements.

Frequency (MHz)	One transmission time (S)	Limit(S)	Result
433.92	0.17	5	Pass



3.4. Antenna Requirement

Standard Applicable

According to FCC Part 15C 15.203

- a) An intentional radiator shall be de-signed to ensure that no antenna other than that furnished by the responsible party shall be used with the device.
- b) The manufacturer may design the unit so that a broken antenna can be replaced by the user, but the use of a standard antenna jack or electrical connector is prohibited.

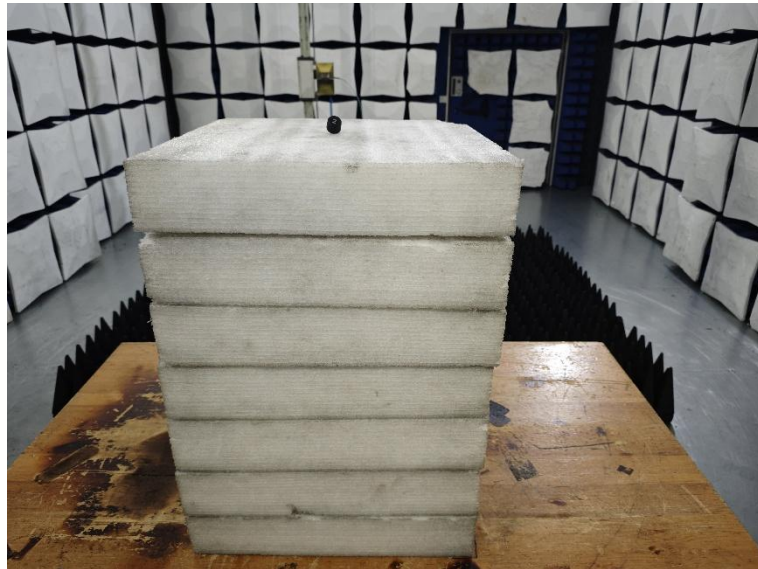
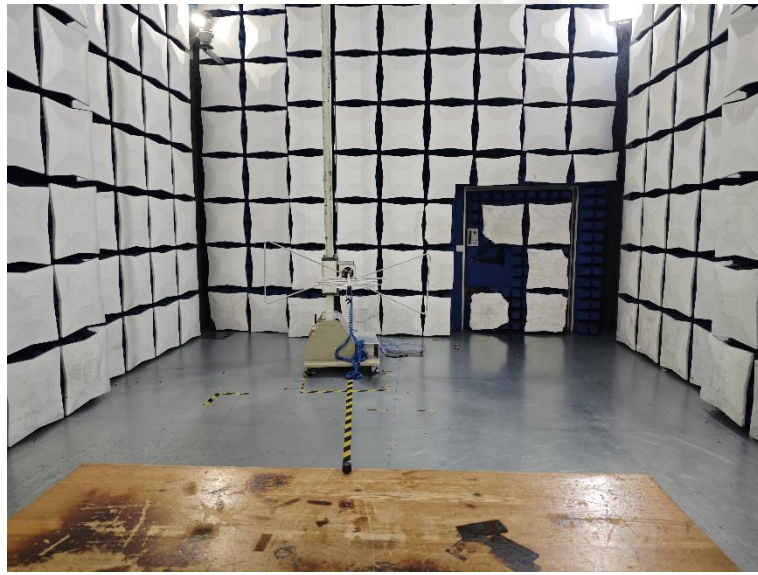
Refer to statement below for compliance.

The manufacturer may design the unit so that the user can replace a broken antenna, but the use of a standard antenna jack or electrical connector is prohibited. Further, this requirement does not apply to intentional radiators that must be professionally installed.

Antenna Connected Construction

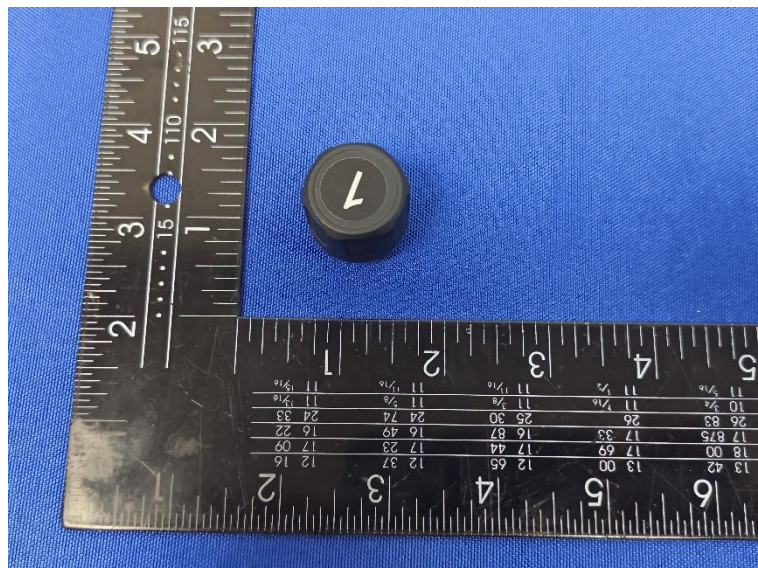
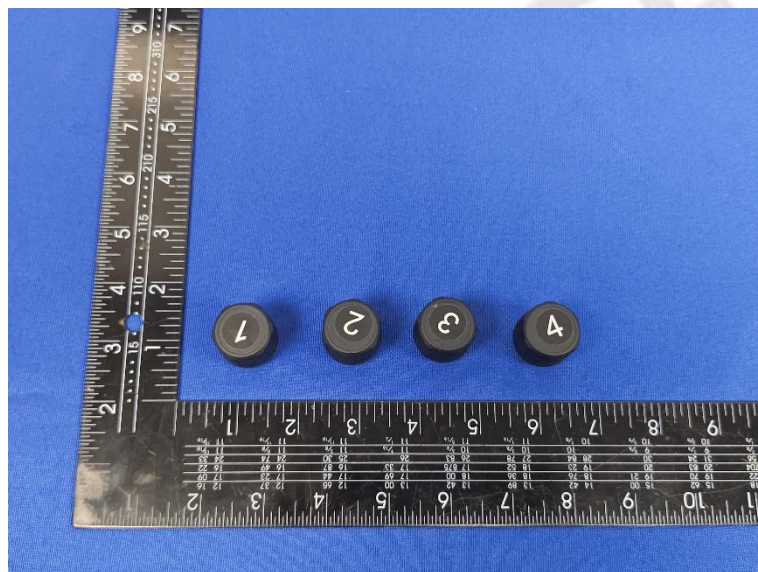
The antenna used in this product is an PCB Antenna, The directional gains of antenna used for transmitting is 0 dBi.

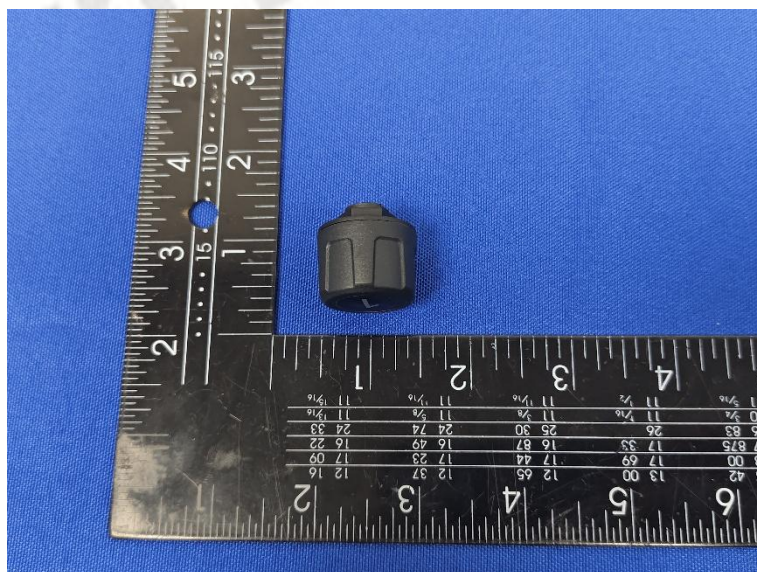
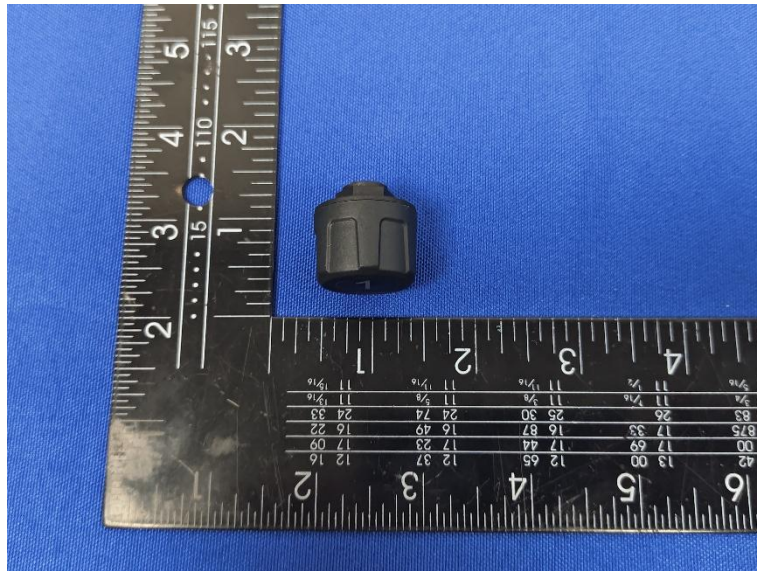
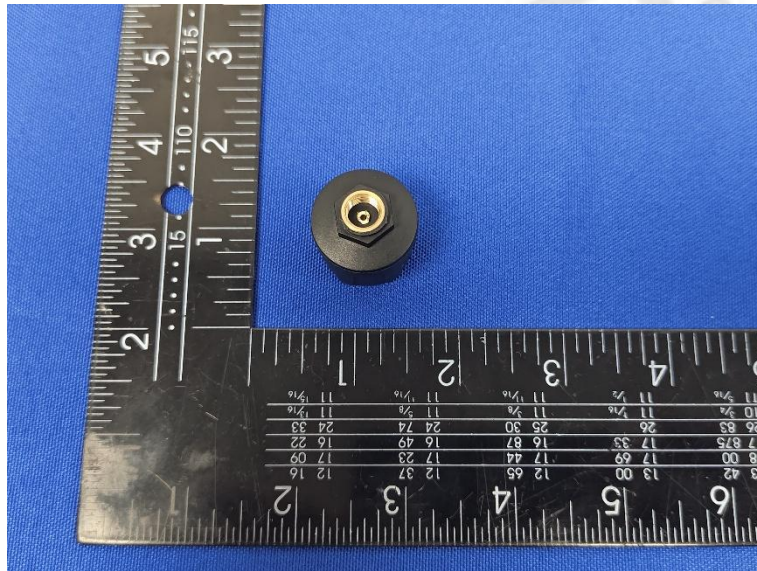
4. Test Setup Photos of the EUT

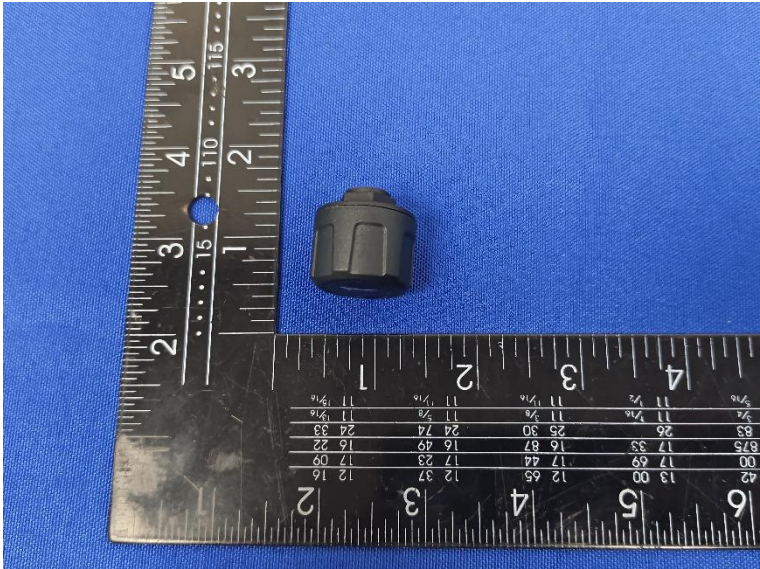
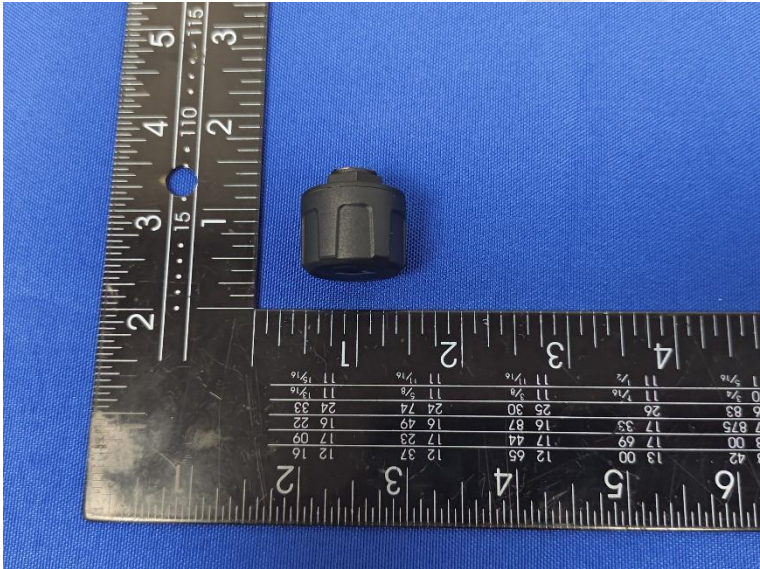


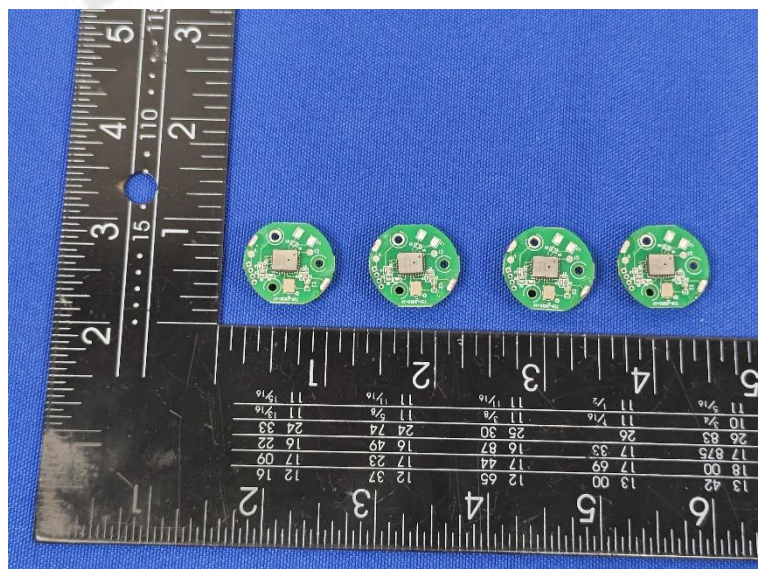
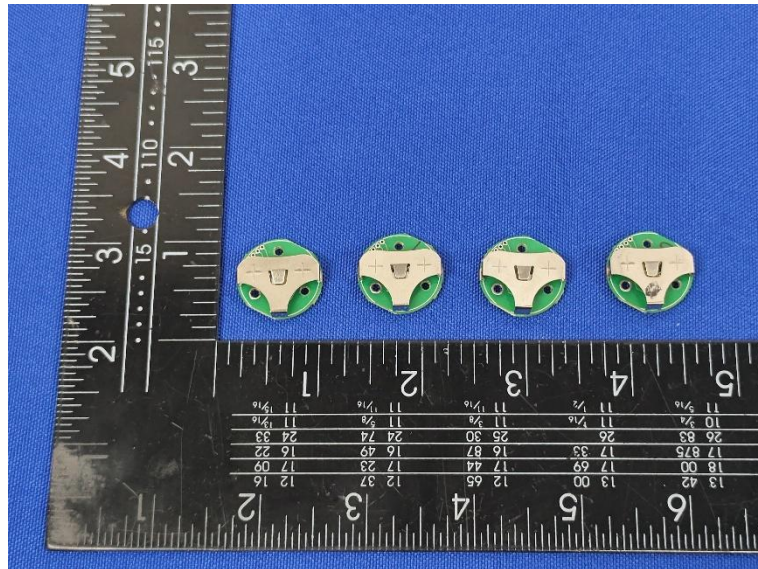
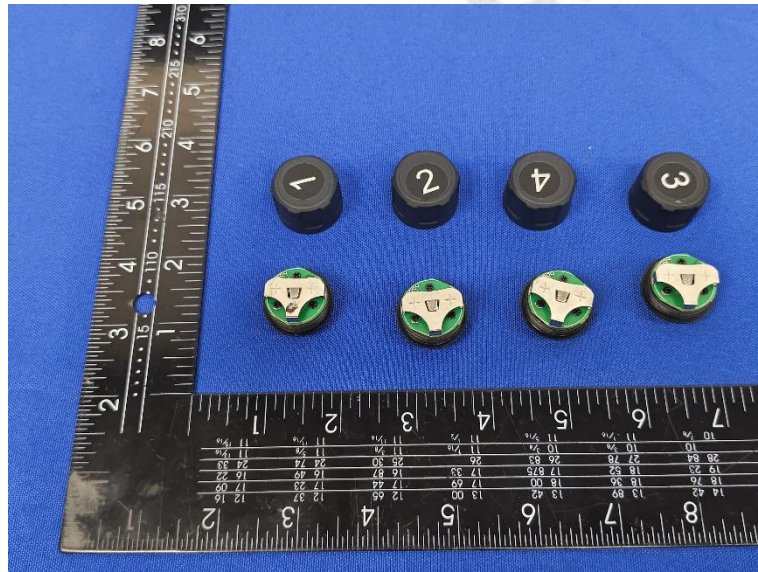
5. External and Internal Photos of the EUT

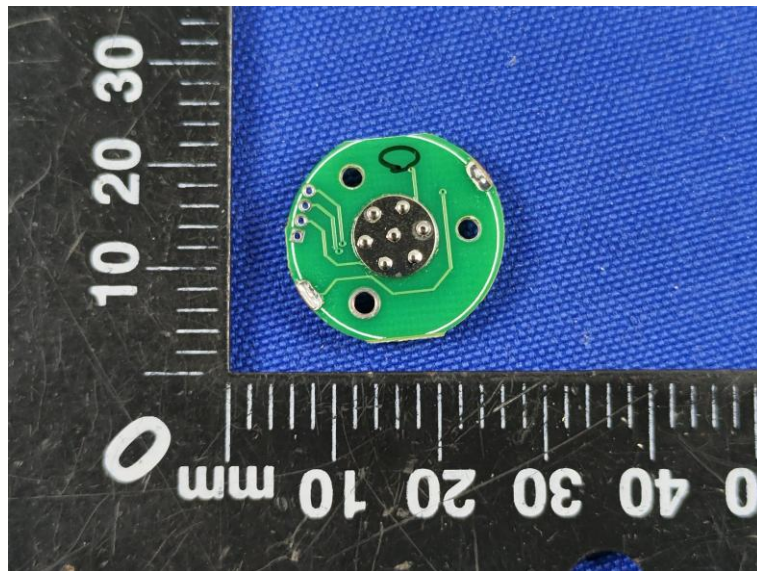
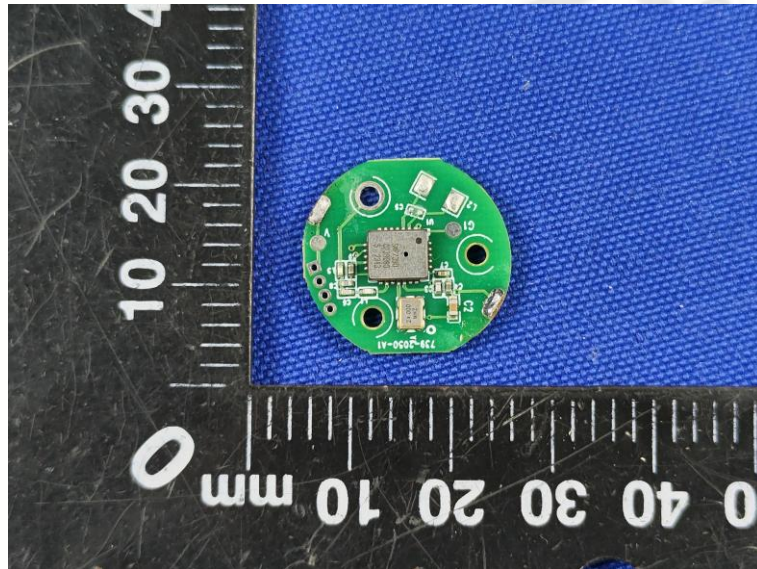
External Photos of EUT



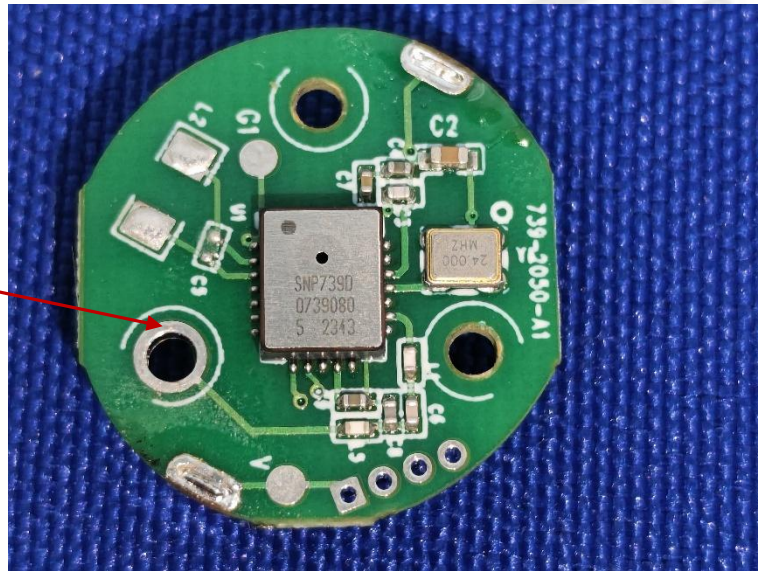




Internal Photos of EUT



Antenna



***** End of Report *****