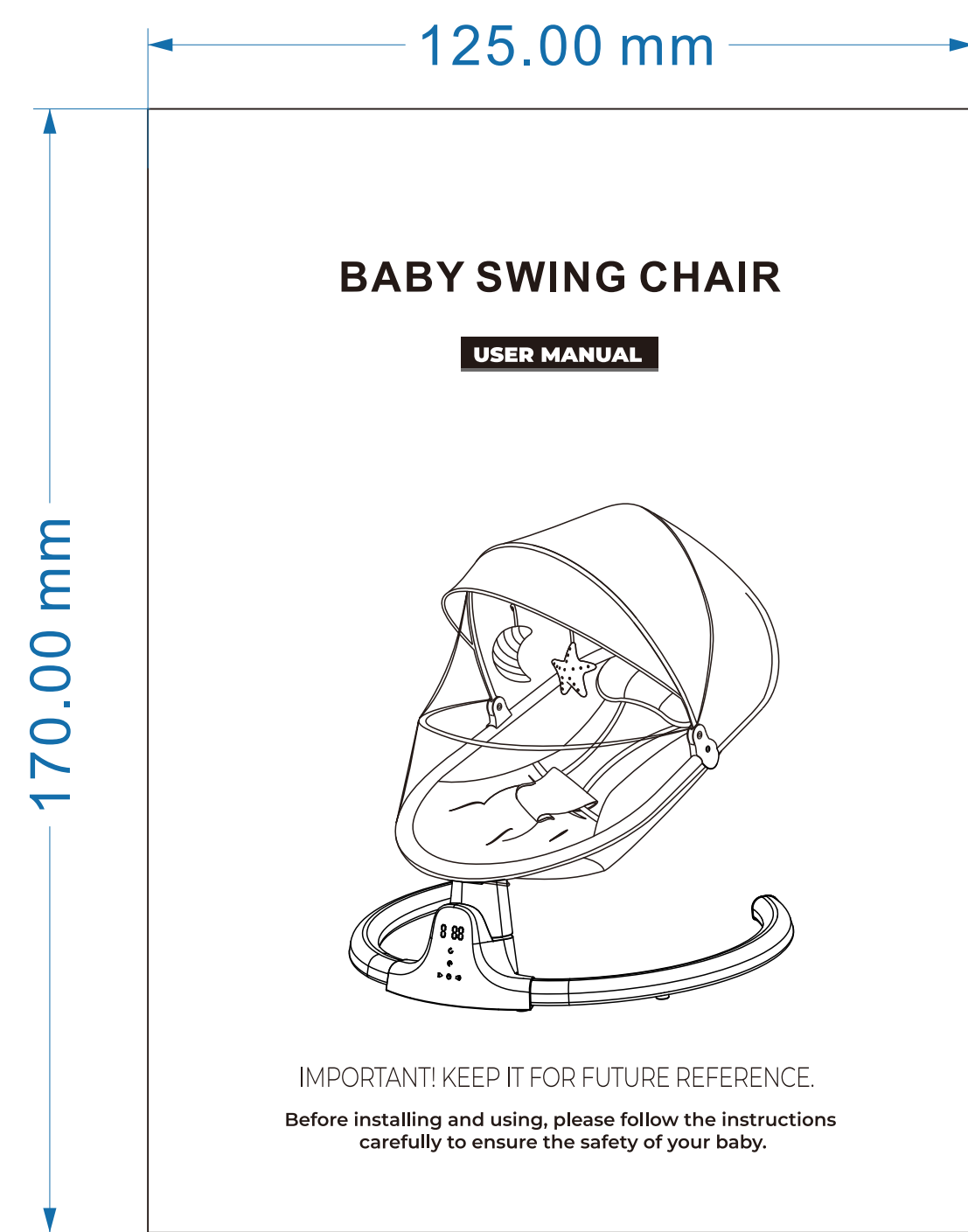


图号		名称		说明书		尺寸		材质		80g双胶纸	
型号 BB701K		备注									
客户		单号		版本		V1		日期		2024-03-06	
业务											



**Product Contents**

**Product Introduction** ..... 2

Product Specification ..... 2

Product Features ..... 2

**Parts Instruction** ..... 3

**Installation** ..... 4

For Base Bracket ..... 4

For Pillow and Seat Cover ..... 4

For Canopy With Toys ..... 5

Safety Belt Instruction ..... 5

Dining Tray Installation & Backrest Reclining Adjustment ..... 6

Assemble Instructions ..... 6

**User Instruction** ..... 7

Button Description ..... 7

Button instruction ..... 7

Motion Lock ..... 8

Remote Control ..... 8

Power Supply ..... 8

**WARNING** ..... 8

**WARNING** ..... 9

**Clean & Maintenance** ..... 9

Clean ..... 9

Maintenance ..... 9

**Troubleshooting** ..... 10

**After-sales Service** ..... 11

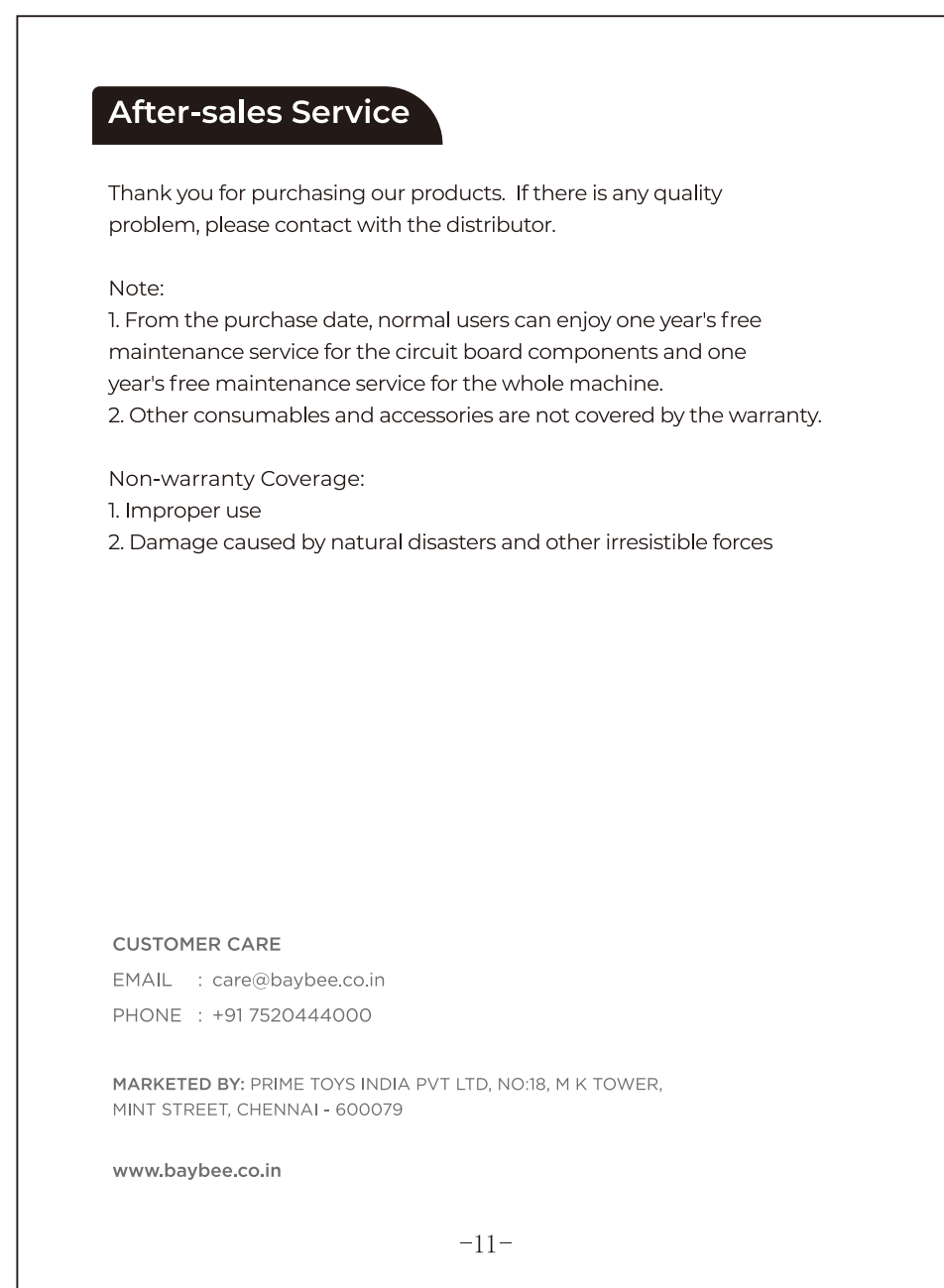
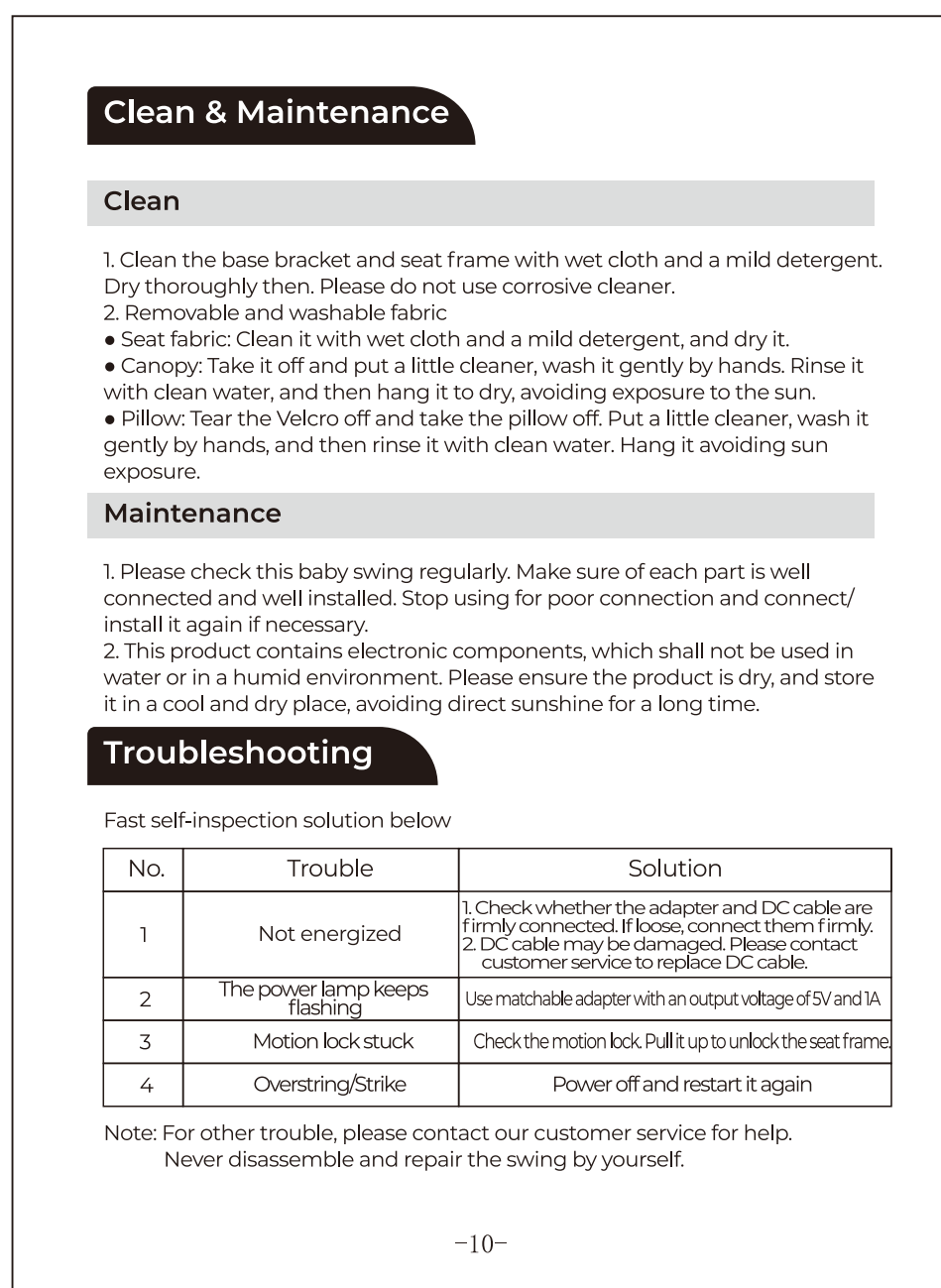
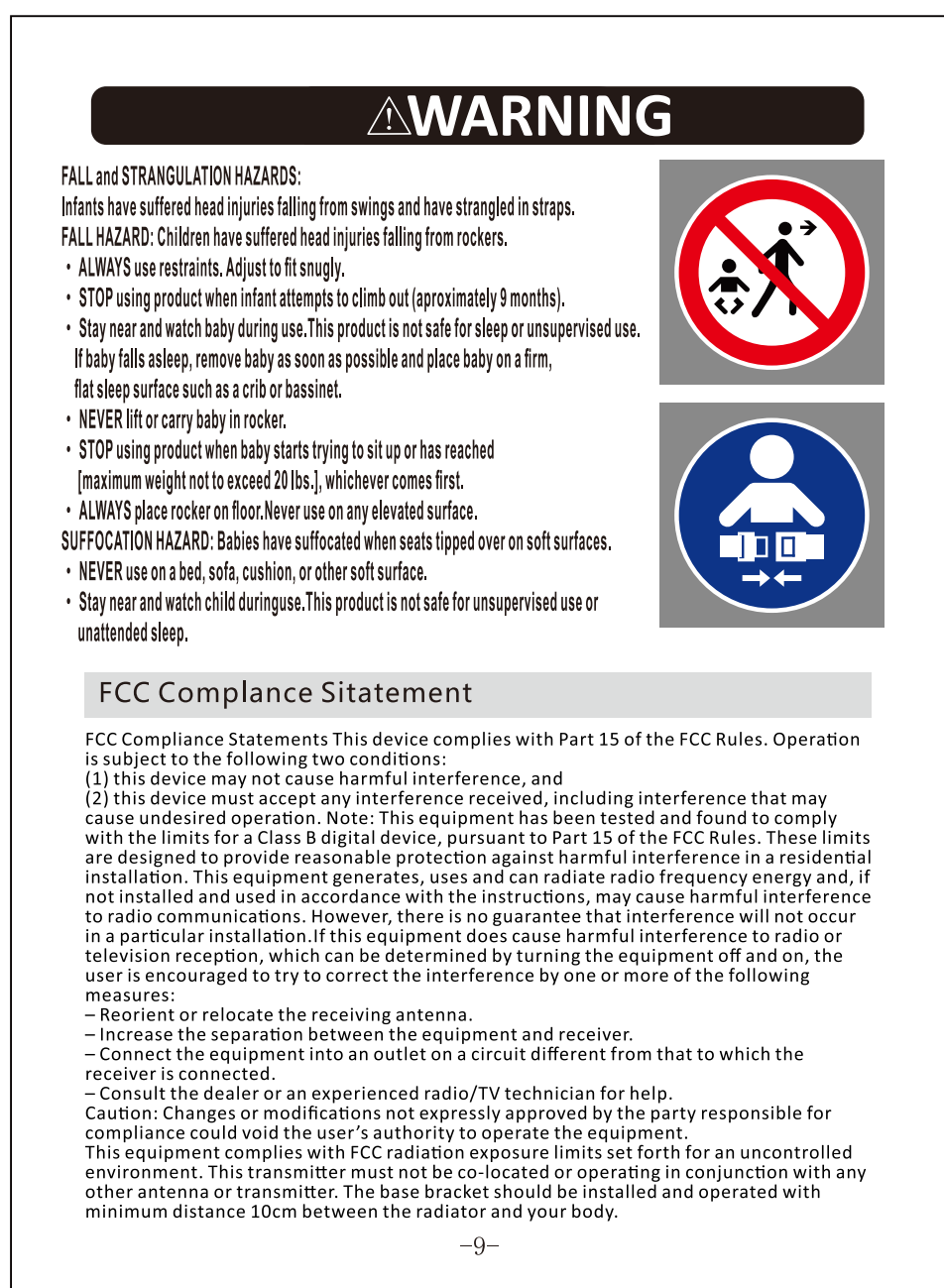
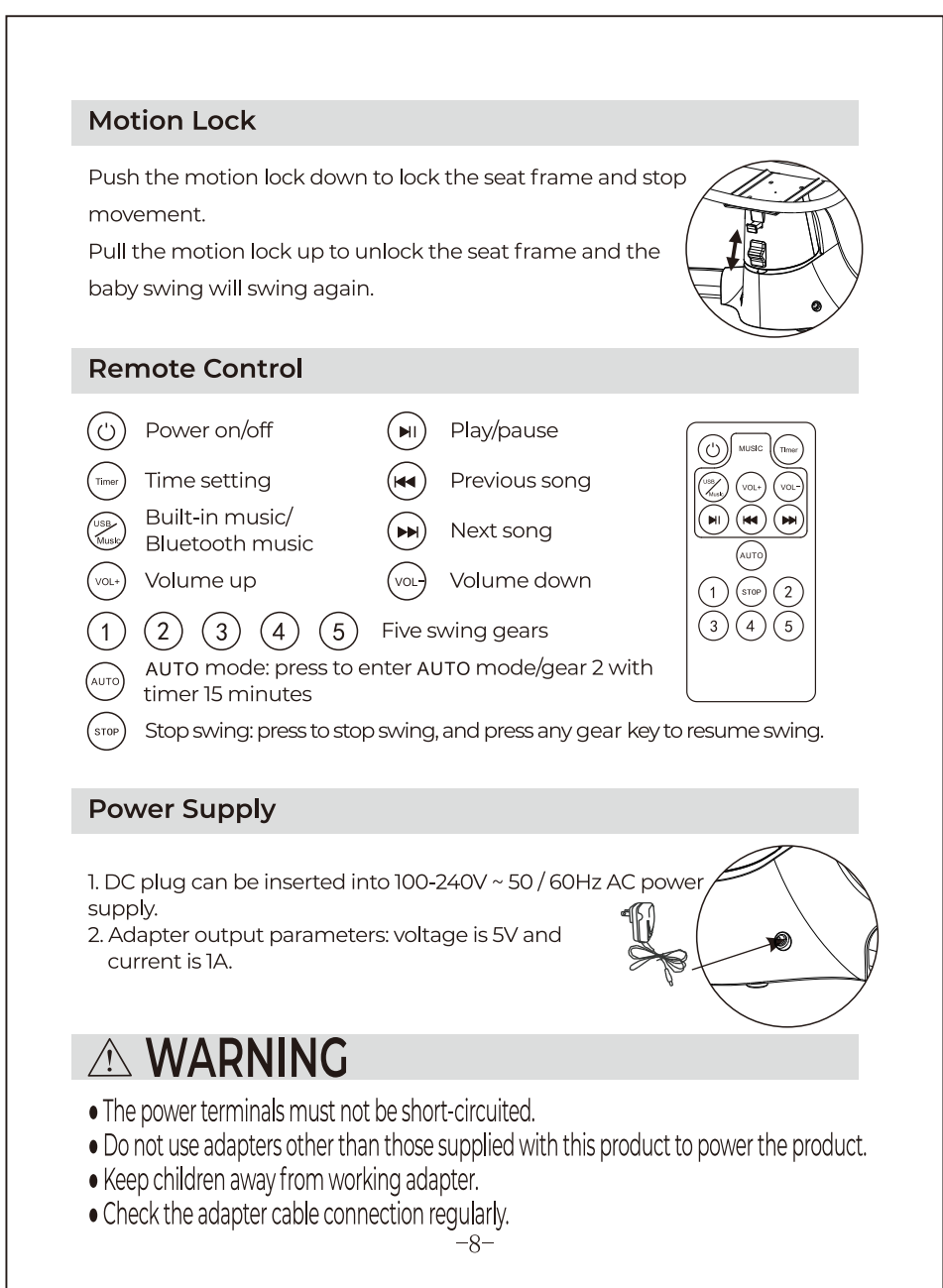
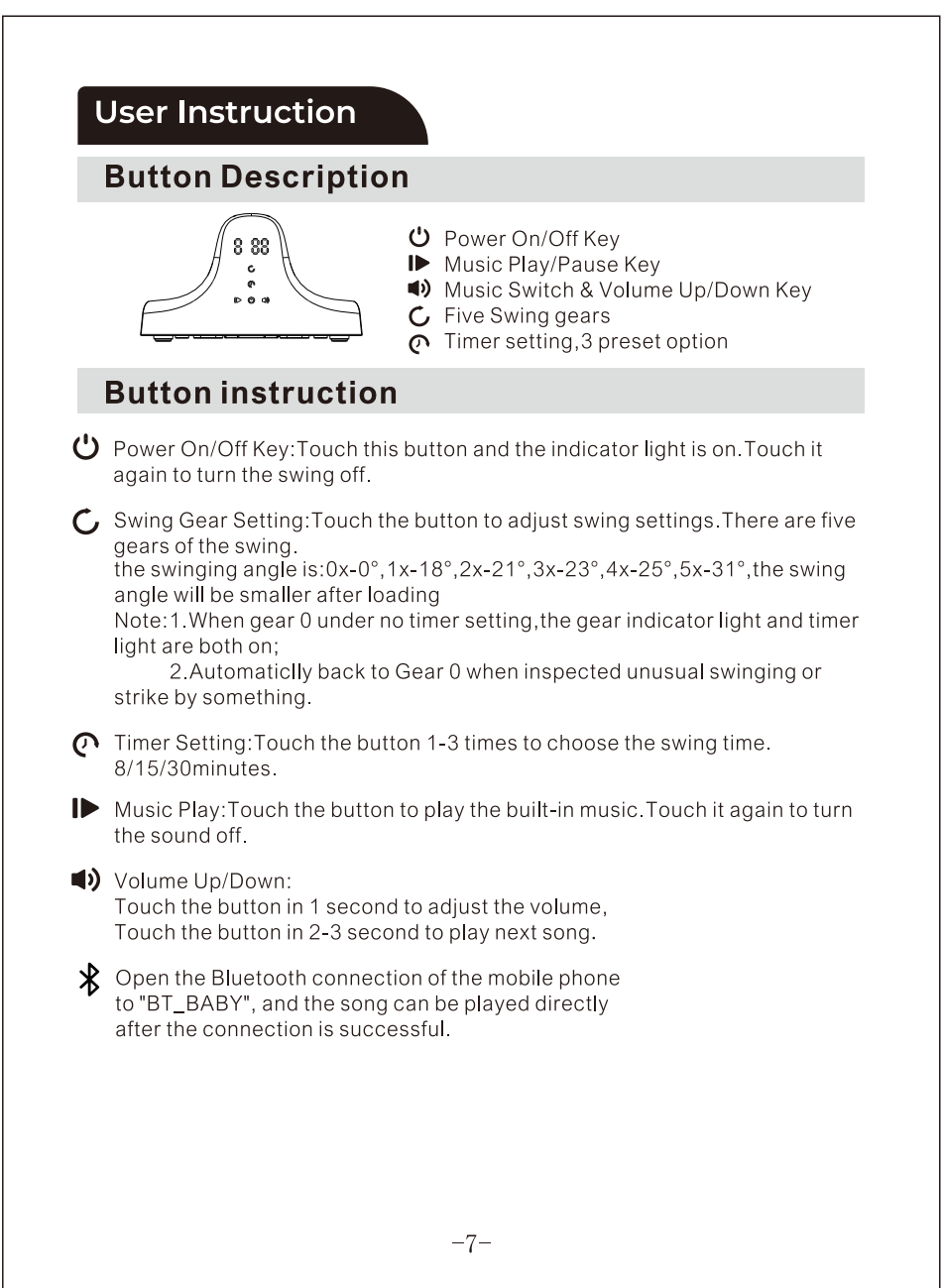
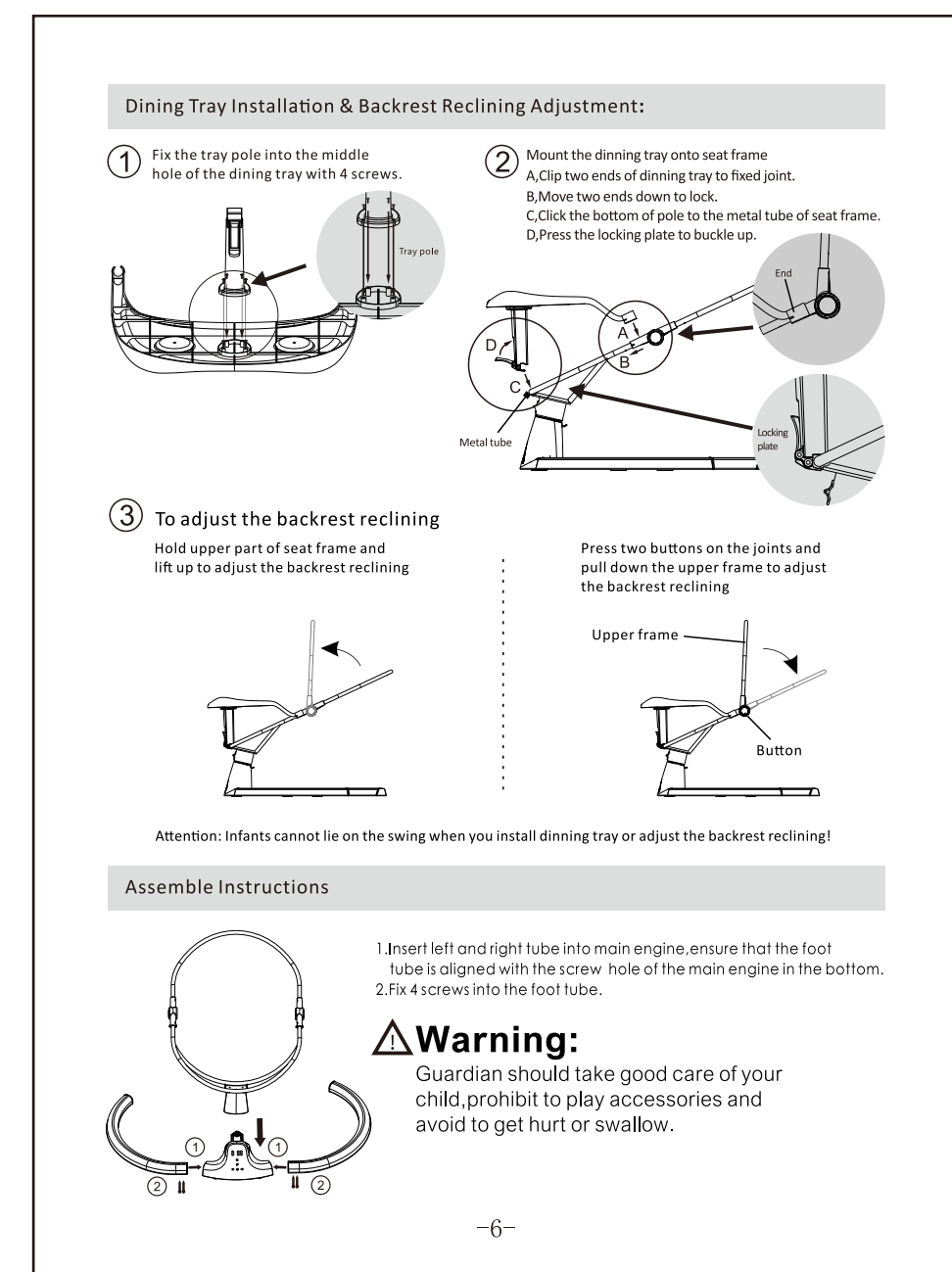
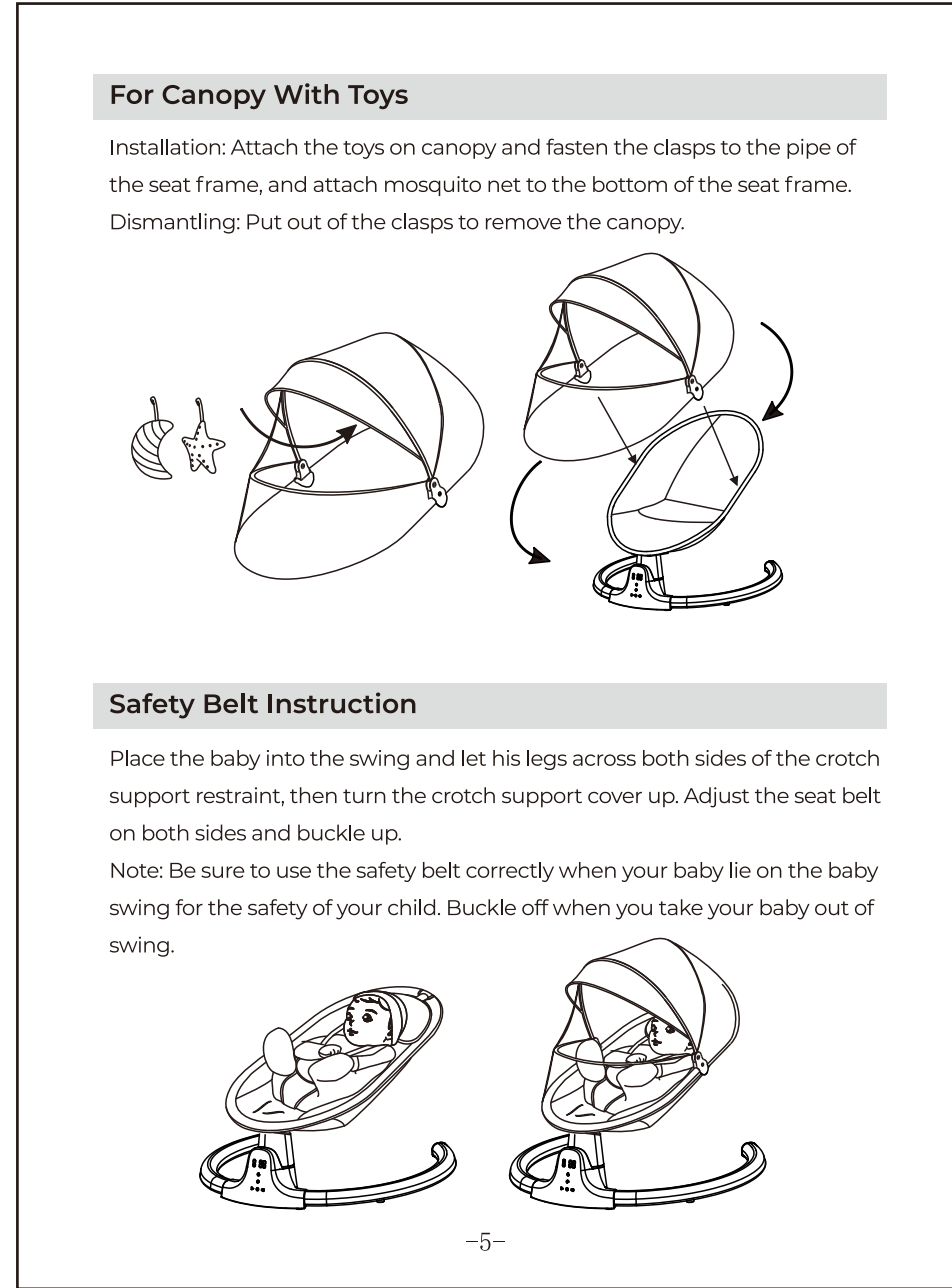
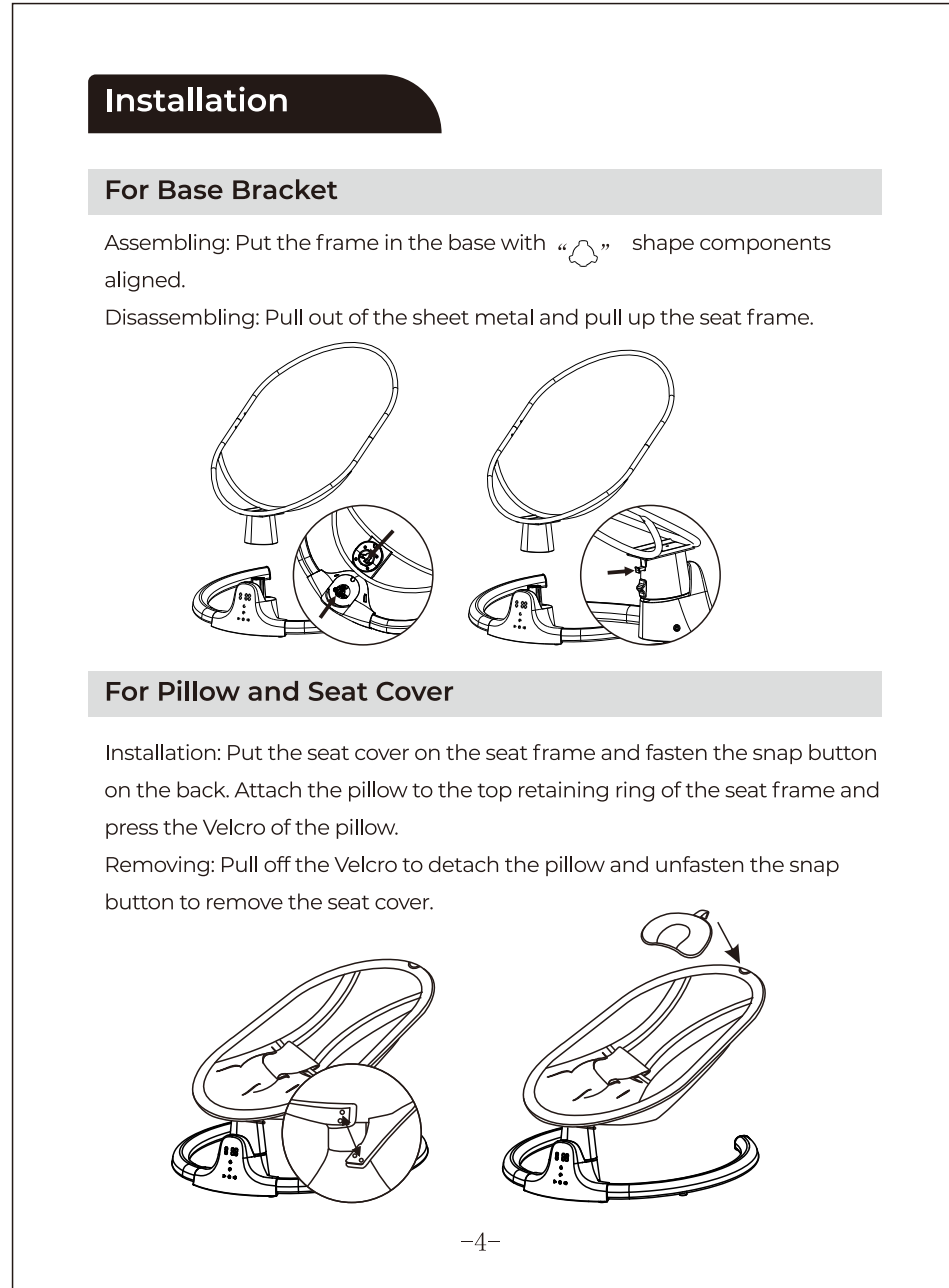
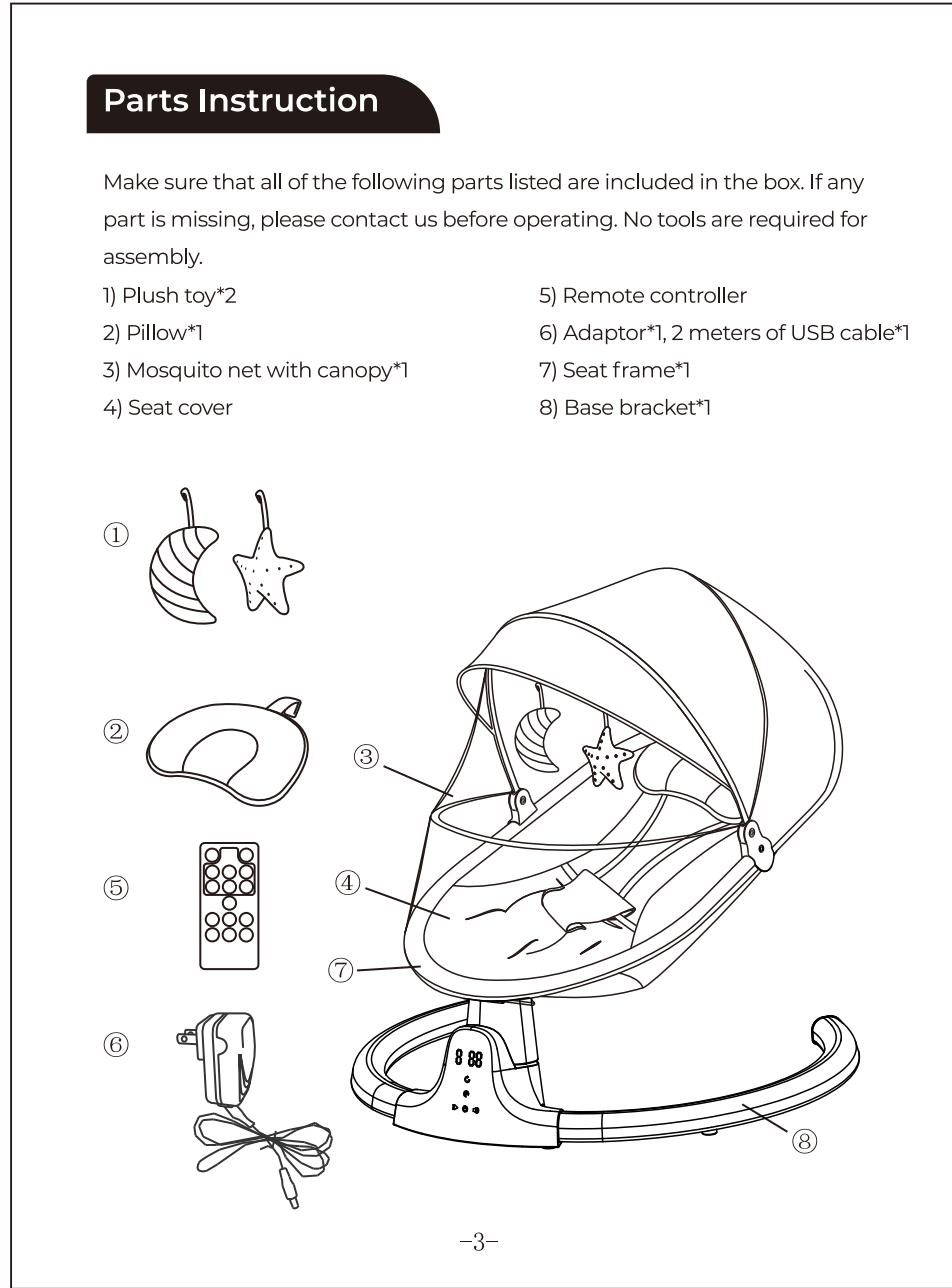
**Product Introduction**

**Product Specification:**

Product Name	BABY SWING CHAIR
Model Number	BB701
Input Voltage	100-240V~
Output Voltage	5V
Output Current	1A
Frequency	50/60Hz
Application	Children up to a weight of 9 kg or unable to sit up unaided
Main Material	100% polyester fiber, aviation aluminum base bracket
Certificate	EN12790, EN16232, ASTM F2088-22, ASTM F963-17

**Product Features:**

- Swinging from side to side, with five gears mimicking human movement.
- Protecting baby's spine design on the basis of human engineering.
- Power supplied by safe 5V low voltage adapter.
- One-button installation and disassembly, simple and convenient to use.
- Seat cover made of environmental-friendly super soft fabric and non-textile, cozy, breathable and safe & removable and machine washable seat fabric.
- Made of aluminum alloy base with light weight and strong hardness guaranteeing safety for baby.
- Controlled by touching screen or remote controller, easy to operate
- With motion lock and safety belt for protection.
- With built-in soft nature sounds & Bluetooth enabled for music.



**备注:**  
**材质: 80g双胶纸**  
**颜色: 黑白印刷**  
**结合方式: 骑马钉**  
**页数: 12p**

图号 (Drawing No.)		材料描述 (Material)				表面处理 (Treatment)		I	II	III	IV	V	VI	VII	VIII	IX	X	备注 (Remark)			
T O L E R A N C E	GRADE	F	M	C	V	ANGLE		图幅	共 1 张 第 1 张	第三角画法		产品型号									
	SCALE				FM	CV	单位						mm	比例		材料标记					
							版本 (version)						03	批准/日期		图号					
							佛山市熊宝宝科技有限公司							审核/日期		零件名称					
										设计/日期		Part name									