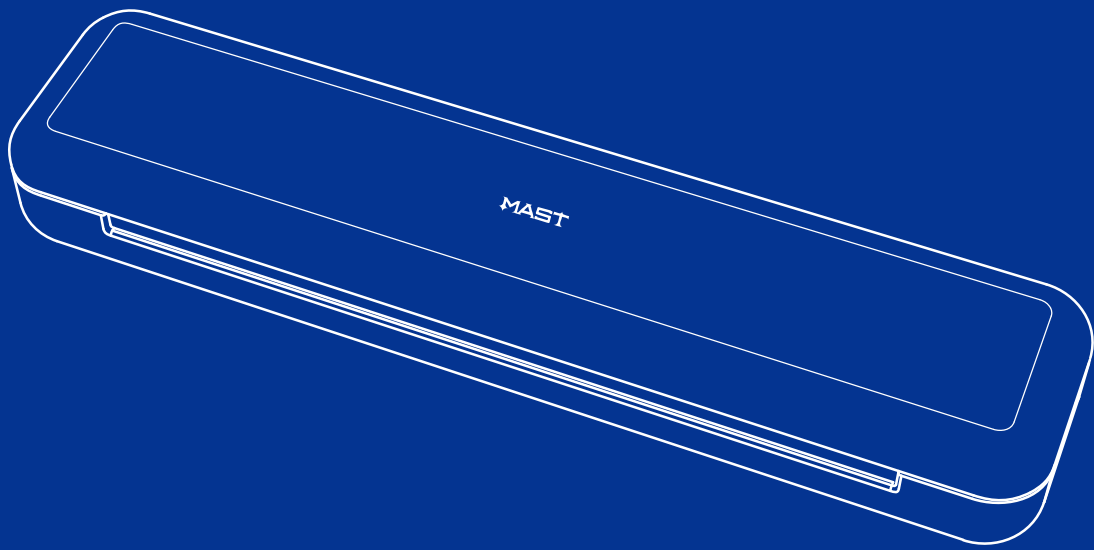


MAST

Portable Tattoo Printer

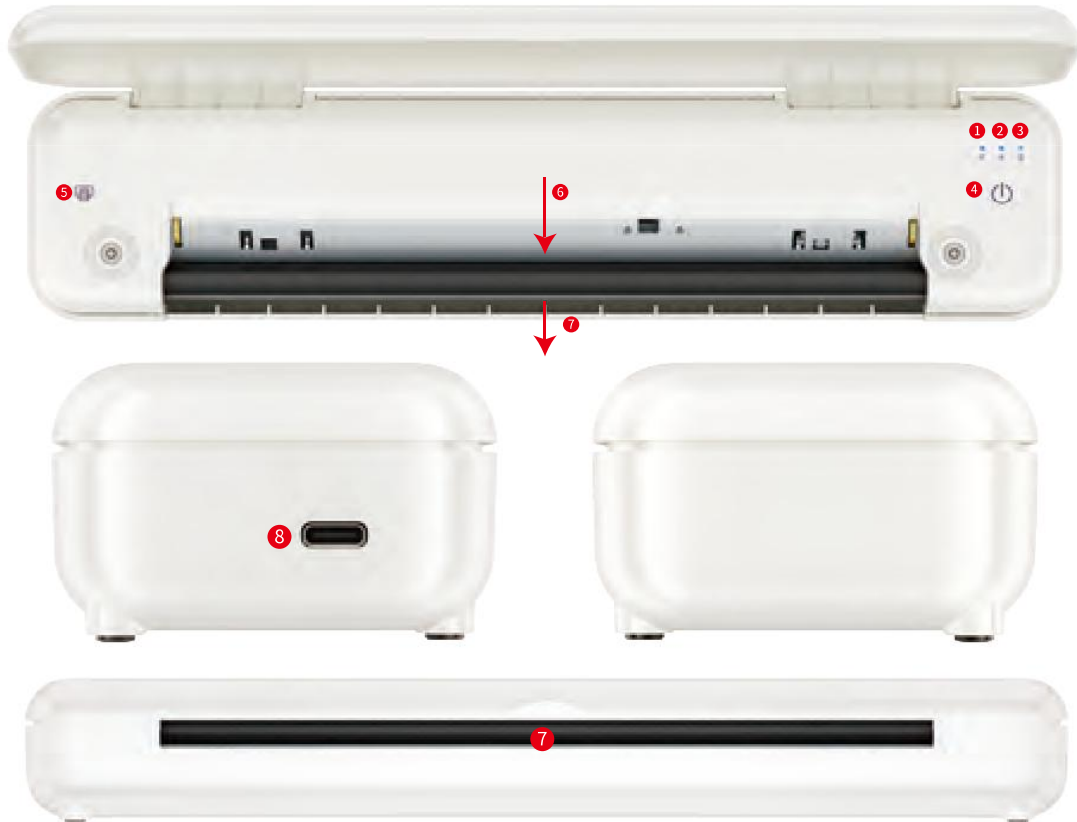
User's Guide

ZY007



Before using the product, please read this instruction manual carefully. It can help you easily understand the usage and precautions of this product.

Appearance and components



- ① Power status light
- ② Rechargeable light
- ③ Bluetooth status light
- ④ Power touch key
- ⑤ Paper feed touch key
- ⑥ Paper entrance
- ⑦ Paper outlet
- ⑧ Type-C connection port

| Condition | Operate |
|------------------------|--|
| Power on | Press and hold the power touch button and release when prompted. |
| Shut down | Press and hold the power button and release when prompted |
| Rechargeable light | Charging, the red light is always on Fully charged, the red light goes out |
| Paper feed key | When the machine is on, press and hold the paper eject button, and the machine will feed paper. Long press will keep feeding paper |
| Bluetooth status light | Bluetooth connection is successful, the blue light is always on. Bluetooth is not connected, blue light flashes |

Operating instructions

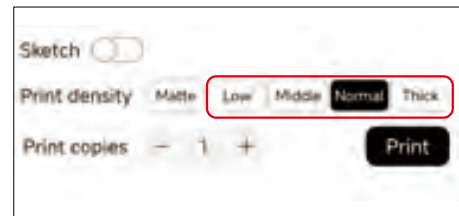
To ensure high-quality printing, please refer to the following steps:

Open the panel, press and hold the power touch button, and release the voice prompt.



Notes for paper placement:

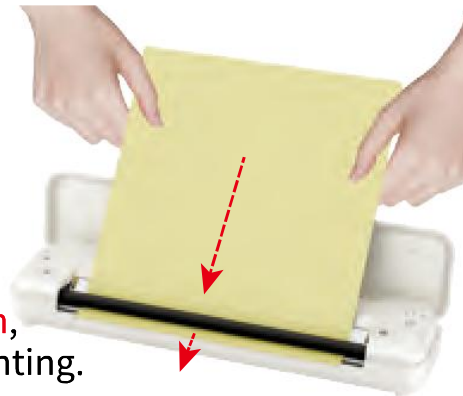
Method 1: When selecting "Low, Middle, Normal, or Thick" for printing concentration, use the following method



① Prepare four layers of transfer paper

② Remove the transparent protective paper

③ Prepare the printer, with the yellow background paper facing up and the white transfer paper facing down, and place it along the top of the printer. The machine will automatically correct paper suction, and then connect Bluetooth for printing.

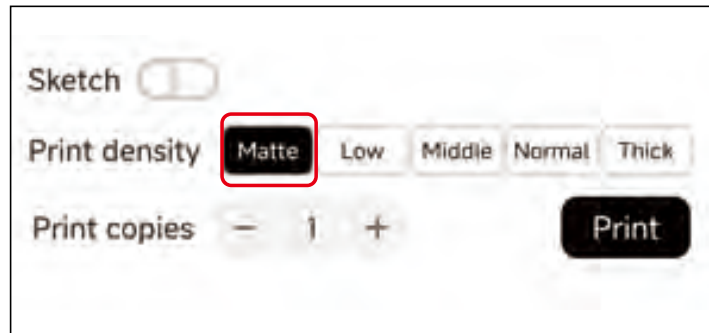


④ Automatically feed paper when placing it

Attention: Due to the different materials of transfer paper and the varying softness and hardness of the top, in order to prevent sticking during printing, when placing transfer paper, be sure to smooth it out and place it in the center

Operating instructions

Method 2: When complex patterns need to be printed, select "**Matte**" as the printing concentration level and use the following method



① Prepare four layers of transfer paper and remove the transparent protective paper.



② Remove the yellow backing paper and horizontally cut it along the top adhesive point. Please note that the adhesive part of the paper should be kept intact.

③ Prepare the printer, with the blue ribbon facing downwards and the white transfer paper facing upwards, and place it along the top of the printer. The machine will **automatically correct paper suction** and then connect Bluetooth for printing.



1 Automatically feed paper when placing it

Attention: Due to the different materials of transfer paper and the varying softness and hardness of the top, in order to prevent sticking during printing, when placing transfer paper, be sure to smooth it out and place it in the center

Operating Instructions

④ After installing the transfer paper, please prepare your mobile phone (iOS or Android) to connect to the machine. Start printing the pattern you want.



| Type | Pattern | Example | Recommended |
|-----------------------------|---------|---------|--------------------|
| Line art pattern | | | ★★★★★ Perfect |
| Shadow pattern | | | ★★★★☆ Very good |
| Gradient pattern | | | ★★★★☆ Generally |
| Colorful background pattern | | | ★☆☆☆☆ Not good |

The quality of transfer paper will affect the printing effect
(The quality of the transfer paper is determined by the uniformity of the ink sheet)

Intelligent Internet

How to download the application:



Search and download "TattooPrinter" from the iOS App Store app.



For Android phones, scan the QR code on the right to download.



Operation steps

After downloading the app, turn on Bluetooth and location information to connect to the printer. All other operations are the same as on iOS.



1. Download "TattooPrinter" printer application



2. Open the application APP

Operation steps



3. Click the upper left corner
Connect to Bluetooth



4. Connect the printer name
ZY007
Default PIN: 0000



5. Click on the photo album
Select pictures to print

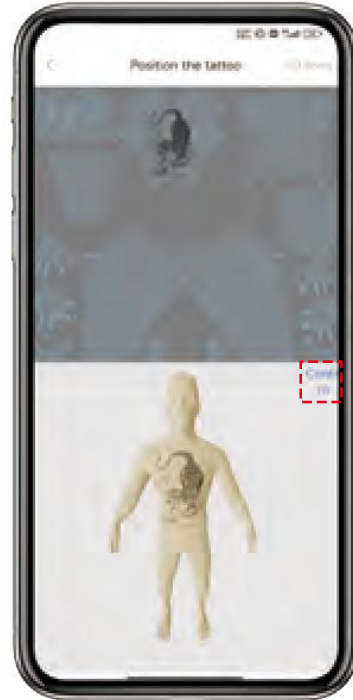


6. Click on
the 3D effect

Operation steps



7. Scale the blue UV grid



8. Zoom the image and place it in the front UV grid. Click confirm to display the effect



9. Place the image in the back UV grid, then rotate the character to the back, click confirm, and display the effect



10. Enter edit mode

Operation steps



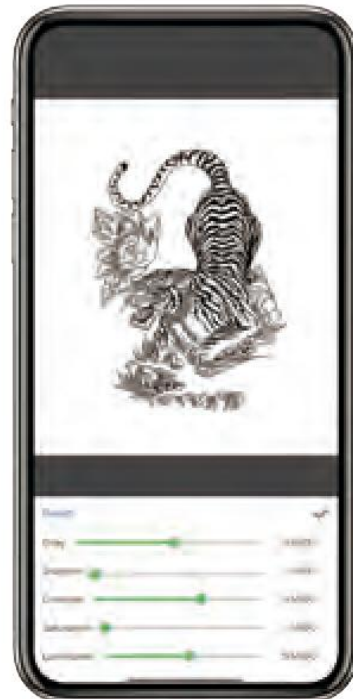
11.size adjustment
(Can be adjusted according to needs)



12.Enter the beautification function



13. Filter adjustment



14. Parametric adjustment

Operation steps



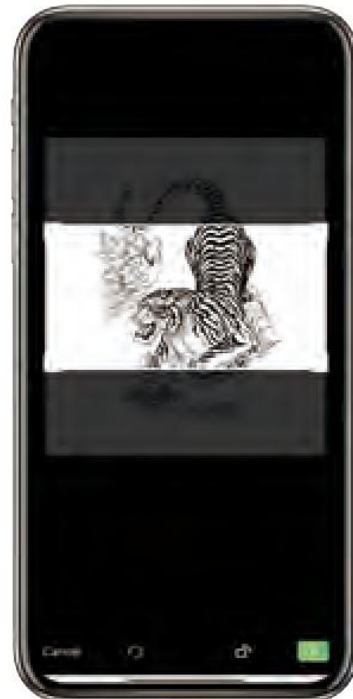
15. Mirror inversion



16. Line thickness adjustment



17. Enter cut mode



18. According to needs
Crop screen size

Operation steps



19.Replication



20.Enter the drawing board mode



21. With brush and eraser functions
Text can also be added



22.Enter equal cropping

Operation steps



23. Vertical and cross-cut adjustment



24. Click Print



25. Select the number of print copies and density
Click to print



26. "Printing successful" appears, wait 3~5 seconds, the paper starts to come out

Computer printing steps

Type-C connection charging/data transmission/ printing



USB Type-C

- ① Scan the QR code or copy the link and use the browser to download the driver



www.mhtclouding.com/mht/service_en.html#driver

redirect link:<https://bit.ly/3tnBD6T>

- ② Download file name "2021 New Receipt Driver"

| File Name | Document Introduction | File Size | Download |
|--|--------------------------------|-----------|----------|
| Apple computer (Mac system) receipt driver | Windows Label Driver | 2.24MB | |
| 2022 New Label Driver | Windows Label Driver | 2.50MB | |
| 2021 New Receipt Driver | Windows Receipt driver | 2.40MB | |
| 4-inch noodle stand-alone drive | Computer 4-inch printer driver | 2.40MB | |

- ③ Download and unzip it. After unzipping, wait until you see "Normal POS Driver VL2.0.2(1)(1).exe" and install it.



ReceiptDriver_EN_2021_11_3.rar

WinRAR

2.37 MB

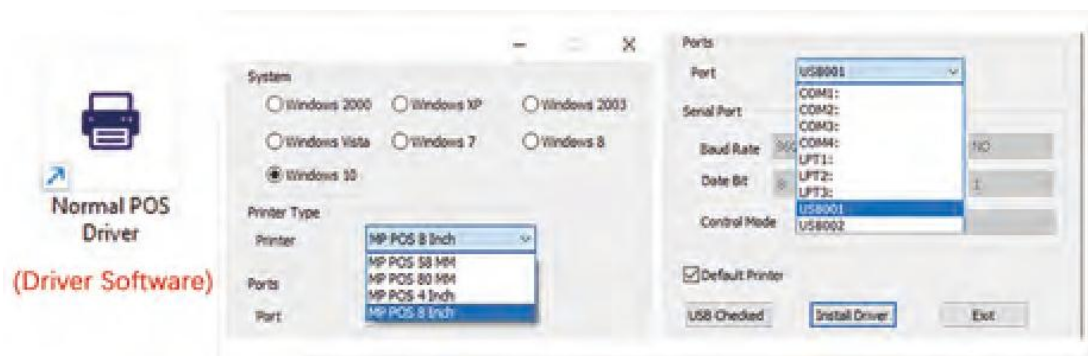
| | | |
|--|---|--------------------------------------|
| | Normal POS Driver VL2.0.2(1)(1) 应用程序 | 修改日期: 2022/4/18 17:24 大小: 2.13 MB |
| | Ticket driver installation tutorial | 修改日期: 2022/5/30 15:33 大小: 278 KB |

Computer printing steps

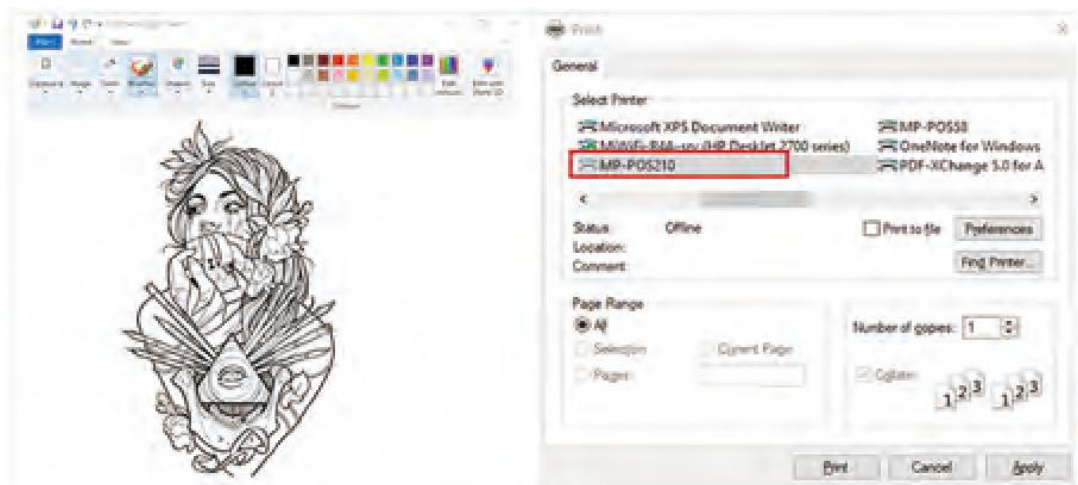
- ④ Connect the computer and tattoo printer using a Type-C cable



- ⑤ After the software installation is completed, run the driver software, set the page that pops up after the installation, printer type "MP POS 8 Inch", click "USB Port Detection", and then click "Install Driver". Printer model: **MP-POS210**.



- ⑥ Select the image and use paint to open the selected image. Select the downloaded driver printer "**MP-POS210**", click Print, and wait for printing.



Precautions

Common problem:

| Question | Reason | Solution |
|---|--|--|
| No pattern after printing | ① The transparent protective film in the middle of the transfer paper has not been removed ② The transfer paper is not put in correctly | ① Remove the transparent protective sheet from the transfer paper ② Follow the instructions to correctly insert the transfer paper |
| Blurred printing | Poor consumables | Please use high-grade consumables |
| Printer automatically shuts down/ Intermittent printing | Battery exhausted | Charge now |
| The printer cannot be turned on and off normally/ Touch button failure | Not reset for a long time | Find the "RESET" reset hole at the bottom of the machine, use a tool to hold it for 3 seconds and then release it. After waiting for 8 seconds, the machine can be turned on normally. |

Printing notes:

1. It is recommended not to print in high humidity and dusty areas.
2. If the print head is overheated after printing, please do not touch it directly.
3. To prevent static electricity from damaging the print head, do not touch the print head.
4. To ensure high-quality printing, please do not print continuously for a long time.

Things to note when charging:

1. Do not insert or unplug the power cord forcefully.
2. Please disconnect the power supply after charging.
3. Please use the original power cord for charging, otherwise the printer may overheat, catch fire and burn out.
4. Do not charge in high temperature environment.
5. If the wrong type of battery is replaced, there is a risk of explosion. It is prohibited to replace the battery without permission. Replacing the battery without permission will void the warranty.

If you get into trouble:

Q: The default PIN for connecting to the printer is: "0000" but if "0000" is entered, it shows that the PIN is wrong and cannot be connected.
How can I solve it?

A: It may be due to the conflict between the mobile phone program and the printer program, causing the PIN program to be confused. Please contact our official technical team and we will send you a tutorial on modifying the PIN connection.

Device parameters



Effective printing width
210mm

Resolution
203Dpi

Size
300*67.2*41.5mm

Battery capacity
2500mAh

Connection method
USB+Bluetooth

Power input
5V $\overline{\text{---}}$ 2A

Paper size
A4 tattoo transfer paper

Support system
Android&iOS&Windows

FCC WARNING

This device complies with part 15 of the FCC Rules. Operation is subject to the following two conditions: (1) This device may not cause harmful interference, and (2) this device must accept any interference received, including interference that may cause undesired operation.

Note: This equipment has been tested and found to comply with the limits for a Class B digital device, pursuant to part 15 of the FCC Rules. These limits are designed to provide reasonable protection against harmful interference in a residential installation. This equipment generates, uses and can radiate radio frequency energy and, if not installed and used in accordance with the instructions, may cause harmful interference to radio communications. However, there is no guarantee that interference will not occur in a particular installation. If this equipment does cause harmful interference to radio or television reception, which can be determined by turning the equipment off and on, the user is encouraged to try to correct the interference by one or more of the following measures:

- Reorient or relocate the receiving antenna.
- Increase the separation between the equipment and receiver.
- Connect the equipment into an outlet on a circuit different from that to which the receiver is connected.
- Consult the dealer or an experienced radio/TV technician for help.

Note: The Grantee is not responsible for any changes or modifications not expressly approved by the party responsible for compliance. Such modifications could void the user's authority to operate the equipment.

The device has been evaluated to meet general RF exposure requirements.

This equipment complies with FCC's RF radiation exposure limits set forth for an uncontrolled environment. This device and its antenna(s) must not be co-located or in conjunction with any other antenna or transmitter.