

Mobile antenna Specifications

SANHAO COMMUNICATION CO.,LTD

Date:2023.11.10

Office address:Room501-508, Jinfulai Building,No.49-1,Dabao Road,Baoan District,Shenzhen

Test equipment

Wireless communications test set: CMW500

Network Analyzer: Agilent 5071B

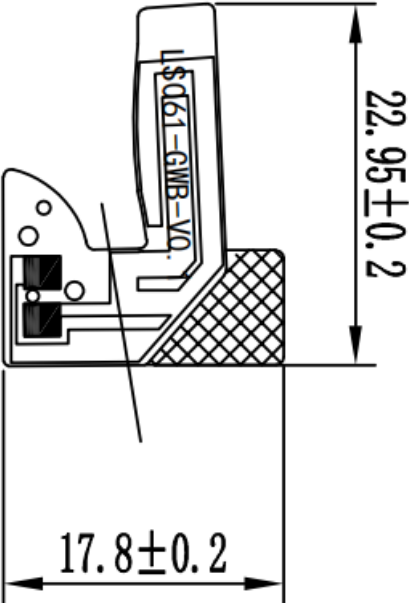
Anechoic Chamber : SATIMO SG24



Antenna information

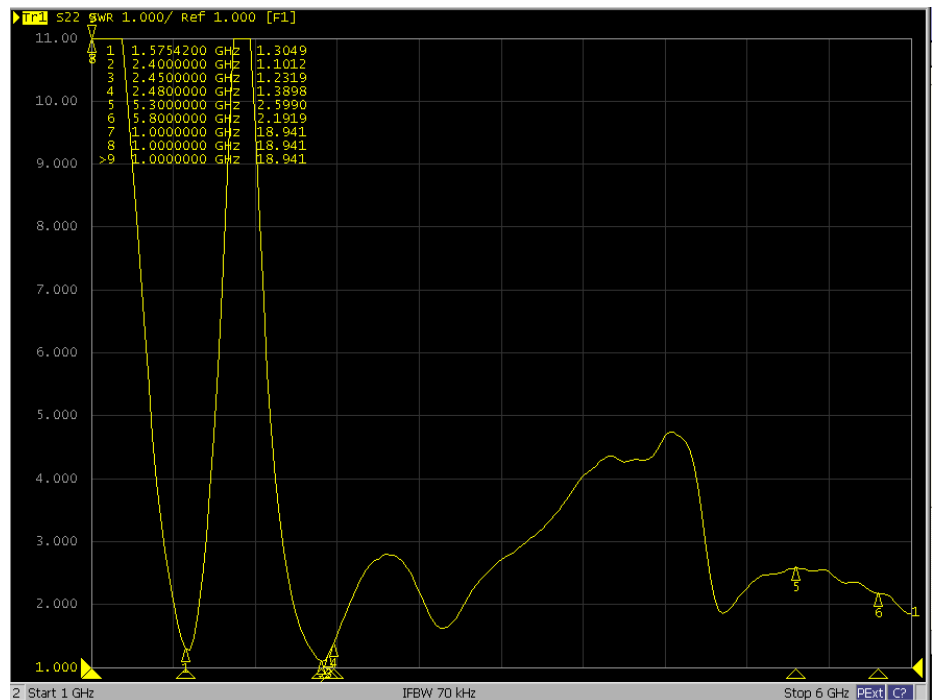
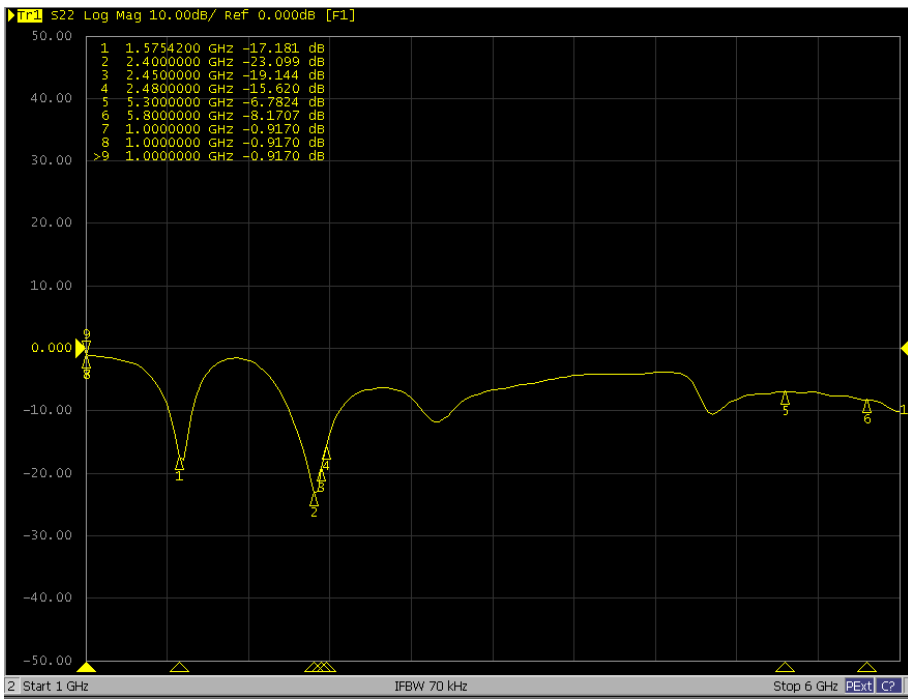
Antenna type	PIFA
Antenna band	2400-2483.5MHz 5150-5850MHz

Antenna dimension drawing



Passive data

WIFI/BT antenna Return Loss & VSWR(2400-2500M)



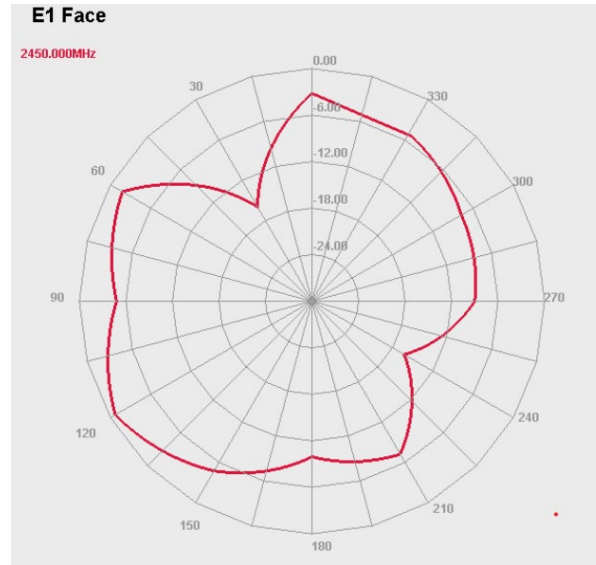
Frequency	1575MHZ	2450MHZ	5300M
Return Loss	-17.1	-19.1	-6.7
VSWR	1.3	1.2	2.5

WIFI/BT antenna Peak Gain(2400-2500M)

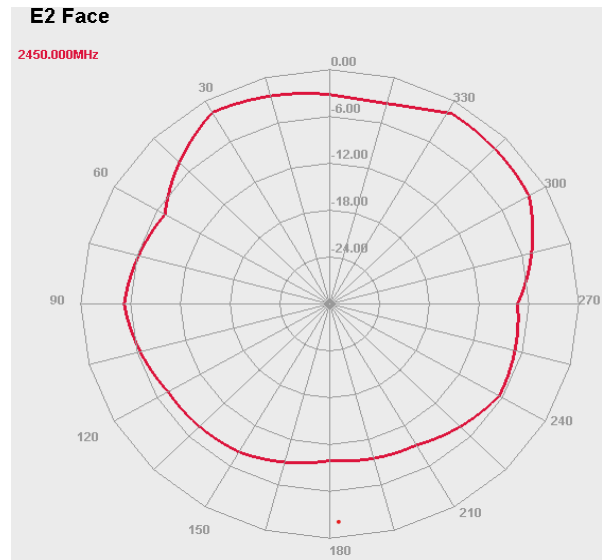
Freq (MHz)	Effi (%)	Gain (dBi)
2400	34.08	-0.04
2410	33.6	-0.16
2420	31.69	-0.39
2430	30.71	-0.55
2440	30.97	-0.57
2450	30.4	-0.7
2460	29.11	-1.06
2470	26.86	-1.47
2480	26.1	-1.6
2490	26.12	-1.59
2500	26.31	-1.5

Typical free space radiation pattern

(1) 2400-2500MHz X-Z Plane: $V \text{ Phi}=0$

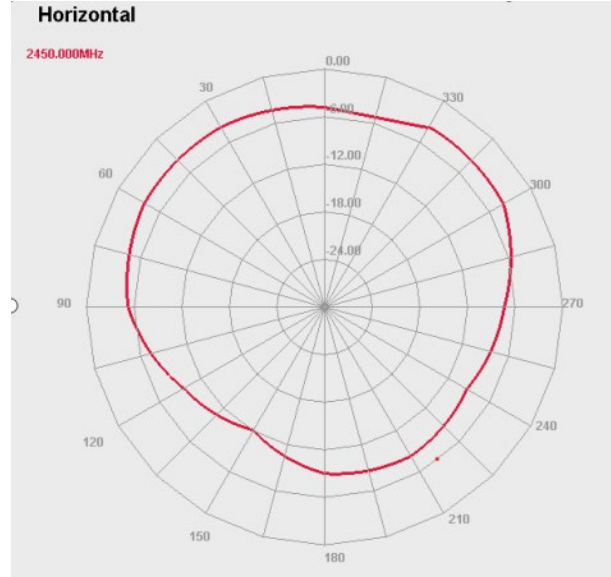


(2) 2400-2500MHz X-Z Plane: $V \text{ Phi}=90$

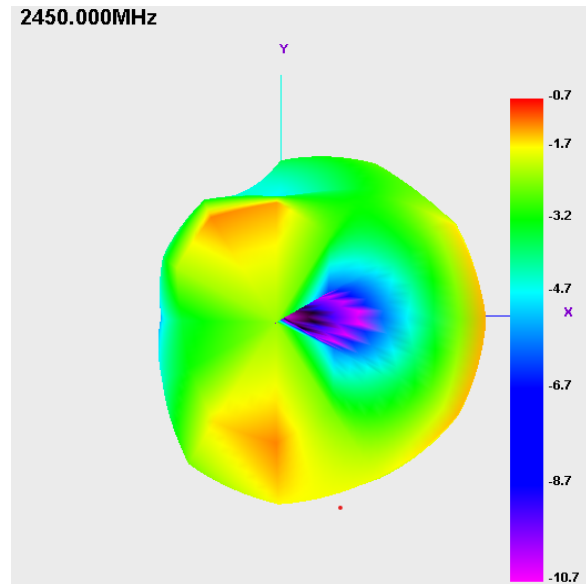


Typical free space radiation pattern

(3) 2400-2500MHz X-W Plane: H Theta=90



(4) Typical free space 3D Radiation pattern at 2.45GHz:

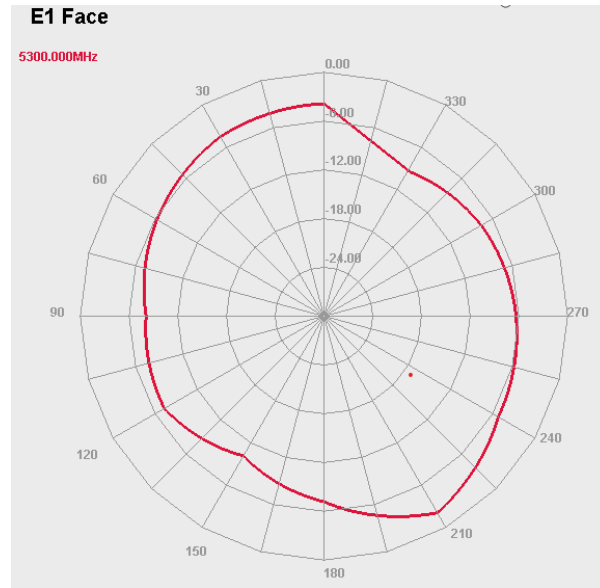


5GWIFI antenna Peak Gain(5150-5850M)

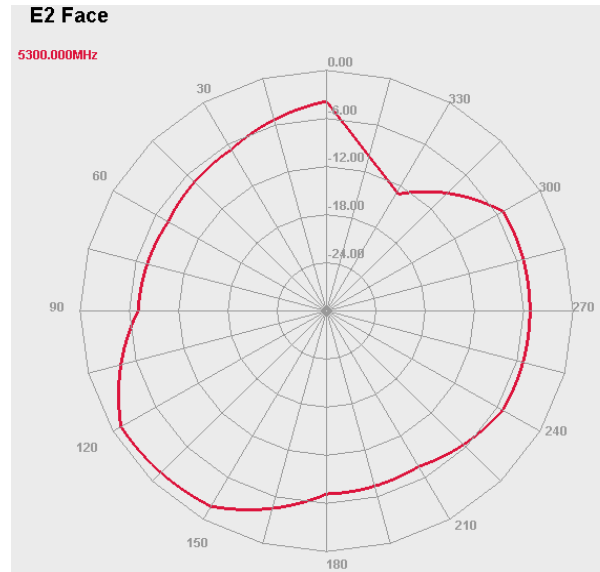
Freq (MHz)	Effi (%)	Gain (dBi)
5150	28.68	0.07
5200	27.55	0.21
5250	27.03	0.19
5300	27.64	0.02
5350	29.38	-0.04
5400	29.39	-0.05
5450	28.67	0.14
5500	29.72	0.09
5550	30.34	0.47
5600	28.06	-0.28
5650	25.14	-0.89
5700	25.31	-0.7
5750	28.2	-0.22
5800	24.64	-0.76
5850	25.17	-0.88

Typical free space radiation pattern

(1) 5150-5850MHz X-Z Plane: $V \text{ Phi}=0$

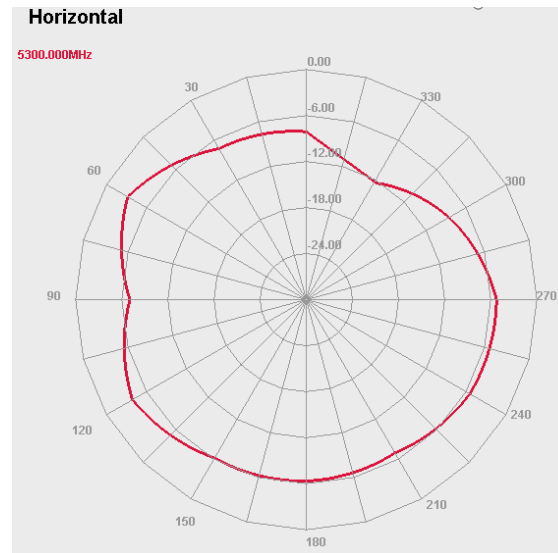


(2) 5150-5850MHz X-Z Plane: $V \text{ Phi}=90$



Typical free space radiation pattern

(3) 5100-5800MHz X-W Plane: H Theta=90



(4) Typical free space 3D Radiation pattern at 5GHz:

