



单张纸(凤琴式折叠)

PISEN 01降噪真无线蓝牙耳机(国际版)(BHD-TW14)_说明书

材质: 太阳60g双胶纸, 双面印刷, 1C

展开尺寸: 364×70mm, 成品尺寸: 52×70mm

绝密

版本	修改内容	修改日期
R01/00		

封面



01

(BHD-TW14)

User Manual

Specification parameters

Product model	BHD-TW14
FCC ID	2BCVO-BHD-TW14
Dimensions	99*55.4*27.3 mm (3.9*2.18*1.08in)
Weight	Approx. 83g (2.93oz)
Battery type	Rechargeable lithium polymer battery
Charging input	DC 5V=1A
Battery capacity of earbuds	60mAh*2
Battery capacity of charging case	750mAh
Rated voltage	3.7V
Frequency response range	200Hz-20KHz
Charging time	Approx. 1.5h
Endurance	Approx. 24h
Endurance of single earbud	Approx. 6h (70% volume)
Operation range	≤10 meters
Supported protocols	Headset / Handsfree / A2DP / AVRCP
Accessories	Earbud*2 Earphone charging case*1 Charging cable*1 User manual*1

The above data is sourced from the PISEN Laboratory, while actual parameters may vary with product or other factors.

Kind reminders

Thank you for buying the 01. Please read this manual carefully to ensure safe and satisfactory operation, and properly keep it for future reference.

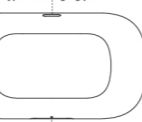
- The specifications and external appearance of this product are subject to change and improvement at any time.
- The design and specifications are subject to change without prior notice.
- Please clean the earbuds with a dry cloth frequently.

Product diagram

Charging case

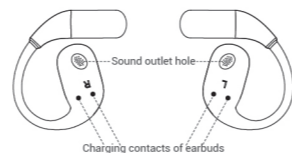
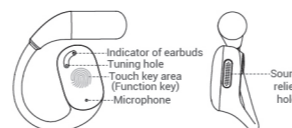


Type-C charging port



Charging indicator

Earbuds



Use instructions for earbuds

1. Power-on

a. Open the charging box cover, the earphones will automatically turn on.

b. When the earphones are outside the charging box and turned off, long press the touch function button of any earphone for 2 seconds to turn on the earphones.

2. Power-off

a. Put the earphones into the charging box and close the lid, the earphones will turn off and charge.

b. The headphones are in an unplayed state, long press any earphone touch function button for 5 seconds to turn off the earphones. (The earphones will automatically shut down after 5 minutes of no pairing status.)

3. Earbuds pairing

a. Auto pairing: In the case of sufficient power, open the cover of the charging box, and the left and right earphones will automatically turn on and complete the pairing.

b. Manual pairing: When the earphones are not automatically paired, you can manually pair them by clicking the L/R earphone touch button 5 times, and then connect the device.

4. Connecting to a mobile phone

•Enter pairing mode

Open the earphone charging box cover, the earphones will turn on and enter broadcast pairing mode.

•Connecting your phone for the first time

Open the earphone charging box cover, turn on the earphone and enter the broadcast pairing mode, turn on Bluetooth on the phone and search for the device named "OWS", then click connect.

•Automatic reconnection device

The headphones have records of pairing with other devices, and when both devices are turned on, the headphones will be reconnected to the last paired device (within a valid distance).

•Over distance reconnection

When the earphones exceed the effective communication distance with the phone, they will disconnect. If they return to the effective distance within 5 minutes, the earphones will automatically reconnect. After being disconnected for 5 minutes without any operation, the earphones will automatically shut down.

•Disconnect from your phone

Select to cancel pairing or delete pairing on the Bluetooth interface of the phone, and the Bluetooth earphones will enter standby mode for the next connection.

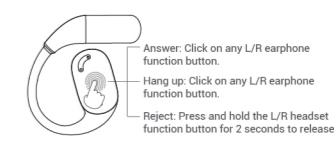
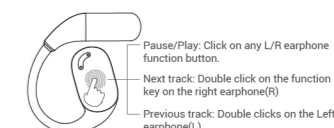
5. Master-slave switchover

a. When both earphones are connected to the phone, put either earphone back into the charging case, and the other earphones will switch to the main mode. And take out the headset will automatically pair into binaural mode.

b. When both earphones are connected to the phone, if either earphone is turned off due to low battery, the other earphone will switch to the main mode to continue working.

Earphone function operation

Music playback mode



Three-way call

a. Long press the L/R earphone touch button for 2 seconds to reject three-party call.

b. Press the L/R earphone touch button to hold the current call and answer the three-party call. Click again to switch between the three-party call and the currently held call.

c. Double-click the L/R earphone touch button to end the current call and answer the three-party call.

Voice Assistant

When the earphones are connected to the phone, double click the function button on the left earphone to activate the voice control function. Repeat the operation to exit.

Restore factory settings

When the earphones are turned on and there is no device connection, click the L/R earphone touch button four times to restore the factory settings.

Headphone prompt sound and indicator light status

State	Operate	Sound	Pilot lamp
Power on	Push-button to power on Automatic power on	"Power on"	The white light stays on for 2 seconds
Power off	Warehouse entry/button shutdown Automatic shutdown	"Power off"	The white light stays on for 2 seconds
Pairing mode	Pairing successful, waiting for connection	"Pairing"	Red and white lights flicker alternately for 200ms
First connection	Successfully connected to device	"Pairing completed"	Light goes out
Connect to device	Manually connect your phone	"Connected"	Light goes out
	Automatic reconnection	"Connected"	Light goes out
Overdistance connection	Disconnected	"Disconnected"	Red and white lights flicker alternately for 200ms
	Reconnection	"Connected"	

Charging box indicator light status

- **Charging indication light**
 - Charging: The red indicator is steady on.
 - Charge complete: The red indicator flashing.
- **battery indicator light**
 - Full battery: Open/close the lid/press the button once, the white indicator light will light up for 4 seconds and then turn off.
 - Low battery: Open/close the lid/press the button once, and the white indicator light will flash for 4 seconds before turning off.
- **Entry indicator light**

Detected earphones placed in the charging case (L/R), the white indicator light flashes once.

Manual pairing	Manual operation of earphone pairing	NA	Red and white lights flicker alternately for 200ms
Call up	Ring tone	If the phone is in sync, the phone calls the bell, otherwise the local ringtone is the earphone	NA
Volume adjustment	Maximum volume	"doduo"	NA
Music playback	Music pause/playback	NA	Breath flicker every 5 seconds
Battery warning	Low battery level	"Low battery"	The red light stays on for 2 seconds
	Low battery shutdown	"Power off"	

Warning:

- Please store and use the product at normal temperature;
- Do not expose the product to the rain or humid environment;
- Do not throw or toss the product, so as to avoid damage;
- Do not disassemble, repair, or modify the product by yourself;
- The product contains a non-replaceable lithium battery, so be sure not to dispose of it randomly, put it in fire, or expose it to direct sunlight, so as to avoid hazards;
- Please dispose of the battery according to local regulations and recycle it whenever possible, and be sure not to dispose of it as the domestic waste, so as to avoid environmental pollution.

Kind reminders:

- To avoid the hearing damage, please keep the volume at a moderate level and avoid listening to music at a high volume for a long time, as it may result in permanent hearing damage or deafness.
- Please refrain from making phone calls or using earbuds while driving, cycling, crossing roads, or engaging in situations that require focused attention.
- When watching videos with earbuds, the audio and video may get out of sync slightly.
- If the earbuds are not used for a long time, please fully charge them at least once a month to extend the battery life.
- If the earbuds are still connected or not charged after being put into the charging case, please wipe the stain on the charging contacts of earbuds to ensure good charging contact.
- The output voltage and current of charger shall not exceed 5V/1A. If their specified values are exceeded, the product will be seriously damaged and the warranty will be voided.

FCC Warning:

This device complies with part 15 of the FCC rules. Operation is subject to the following two conditions: (1) this device may not cause harmful interference, and (2) this device must accept any interference received, including interference that may cause undesired operation. Changes or modifications not expressly approved by the party responsible for compliance could void the user's authority to operate the equipment.

NOTE: This equipment has been tested and found to comply with the limits for a Class B digital device, pursuant to part 15 of the FCC Rules. These limits are designed to provide reasonable protection against harmful interference in a residential installation. This equipment generates uses and can radiate radio frequency energy and, if not installed and used in accordance with the instructions, may cause harmful interference to radio communications. However, there is no guarantee that interference will not occur in a particular installation. If this equipment does cause harmful interference to radio or television reception, which can be determined by turning the equipment off and on, the user is encouraged to try to correct the interference by one or more of the following measures:

- Reorient or relocate the receiving antenna.
- Increase the separation between the equipment and receiver.
- Connect the equipment into an outlet on a circuit different from that to which the receiver is connected.
- Consult the dealer or an experienced radio/TV technician for help.

The device has been evaluated to meet general RF exposure requirement. The device can be used in portable exposure condition without restriction.



Name and company of U.S. agent: FCC US Agent, LLC
Physical U.S. address of agent: 3722 Illinois Avenue, Saint Charles, IL, 60174, USA
FRN of U.S. agent: 0033402884
Email address of U.S. agent: Support@FCCUSAgent.com

PATECH, JSC
Address: B25*27, Quarter B, Hoang Cau Str., O Cho Dua Ward, Dong Da Dist, Ha Noi, Viet Nam
Tel: 0084 - 24 66616999

Yarn En Tees (PH)
Address: 7th Floor Unit 3,1464 Antonio Rivera St. Tondo Manila
Tel: 09816089999

Import by: AGCE INFORMATION TECHNOLOGY
Address: 61 rue de Lyon 75012 Paris
Contact (Name,email,tel): Johnson.wang, aocce-service@outlook.com
Tel:+49-163 1014 128

Design By Pisen Made in China
Manufacturer: GUANGDONG PISEN ELECTRONICS CO., LTD.
Address: No.9, Qinfu 1st street, Jintang Industrial Park,Henggang Town, Longgang Distrist, Shenzhen, P.R.China

PISEN The brand belongs to GUANGDONG PISEN ELECTRONICS CO., LTD.

For FAQs and more help information, please visit: <https://en.pisengroup.com>
Contact: support@pisengroup.com



设计	黄运安	日期	2024-04-08	材料		成品规格	52×70mm	物料编码		物料名称: PISEN 01降噪真无线蓝牙耳机(国际版)(BHD-TW14)_说明书
审核	杜志鸿	日期	2024-04-08	工艺		单位	mm			品胜股份 PISEN SHARES
批准	卢松	日期	2024-04-08	比例	1:1	公差	±0.5mm			