

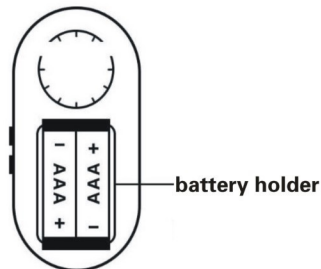
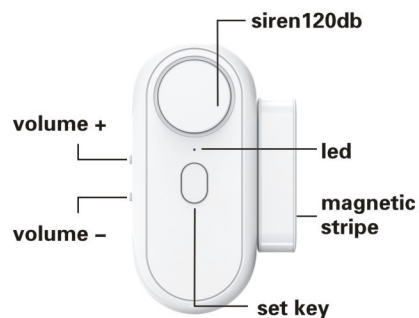
433mhz wireless door window alarm contact sensor



Product introduction

Thank you for choosing our latest model of door window alarm for the year 2023. The intelligent alarm is a safety device specifically designed for home and office security, which can effectively protect your property and safety. The product has a simple structure, is easy to install, and can accurately and timely detect any illegal open or movement, alerting users through a 120-decibel on-site alarm. Please carefully read this manual before using the product for the first time and keep the user manual for future reference.

Product structure diagram



Standalone version—

Install and use

Step 1: remove the battery strip and test

Before you can install the sensor, it's a good idea to power it up and test it by opening and closing the door or window. When the door or window is opened, the magnet will separate from the sensor, causing it to activate. When closed, the sensor will be deactivated then. Door sensors are harder to move after installing them, so this can save a lot of trouble later in the process.

Step 2: select suitable alarm mode for the door alarm?

Alarm mode	Operation method	Usage
Burglarproof mode	long press SET key for 5 seconds, release after beep. Press the SET key one time again.	when the thieves break in, The door alarm will activate with a 60-second alarm sound
30s alarm mode	long press SET key for 5 seconds, release after beep. Press the SET key twice again.	The door alarm will activate with a 30-second fixed alarm sound. The thieves can't deactivate the alarm by closing the door
Doorbell mode	long press SET key for 5 seconds, release after beep. Press the SET key three times again.	The door alarm will emit a 6-second DING-DONG doorbell sound
Closing reminder mode	long press SET key for 5 seconds, release after beep. Press the SET key four times again.	The door alarm will activate with a continuous 180-second beep to remind user to close the door
Delay alarm mode	long press SET key for 5 seconds, release after beep. Press the SET key five times again.	The door alarm will start 8 seconds after being triggered. It can avoid the false alarm by close the magnet or disarmed by remote control

Step 3. mount the alarm with tape on the door

Clean the surfaces where you'll install the sensor's two halves so the adhesive works better. Place the main sensor first, holding for around 30 seconds to ensure a strong adhesive bond. Place the magnet on the surface opposite the sensor.

(stick the big tape at the back of main sensor, stick the small tape on the magnet)

How to reset the door alarm?

Hold volume+key for 5 seconds and release it when you hear 1 long beep, the door alarm will be factory default (remote control, sensors are deleted, and the alarm model will be back to Burglarproof mode).

Low voltage warning

The alarm will start continuous beeps with blue LED on when the battery voltage is lower than 2.7V, please replace the battery in time.

Stop alarm sound

To stop the alarm sound, press the set key 5 times slowly.

RF version—

The RF version not only has all the functions of the standalone version, but also supports up to 18 remote controls and 18 wireless detectors.

Attention: the door alarm mustn't be armed or bypass armed if the magnet is separated. The door alarm will sound 5 beeps for failed arm.

How to pair remote control to door alarm?

Long press the volume + key for 5 seconds, release it when you hear one short beep. You can trigger the remote control within 20-second the pairing time (you also can press the volume + key one time to exit manually).

How to pair wireless sensor to door alarm?

Long press the volume + key for 10 seconds, release it when you hear two short beeps. You can trigger the wireless sensor within 20-second the pairing time (you also can press the volume + key one time to exit manually).

Specification

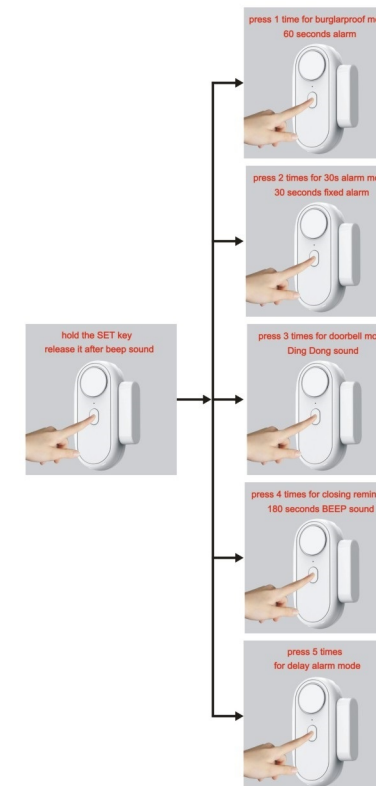
alarm device	alarm mode	burglarproof 30s alarm doorbell closing reminder delay alarm
	sound volume	65dB-120dB
	battery in alarm device	2 pcs AAA batteries
	back up life	>= 1year
	low voltage alarm	<2.7V
remote control	working temperature	-10~60°C
	battery in remote control	1 pc 27A battery
	battery life	>= 1year
	remote control emit distance	20-50m
	remote control quantity paired	max 18 pcs
	wireless frequency	433.92MHZ

Quick operation

1.quick test



2. how to select alarm mode



3. how to open the alarm



4. adjust the volume by short press



This device complies with part 15 of the FCC Rules. Operation is subject to the following two conditions: (1) This device may not cause harmful interference, and (2) this device must accept any interference received, including interference that may cause undesired operation.

Any Changes or modifications not expressly approved by the party responsible for compliance could void the user's authority to operate the equipment.

Note: This equipment has been tested and found to comply with the limits for a Class B digital device, pursuant to part 15 of the FCC Rules. These limits are designed to provide reasonable protection against harmful interference in a residential installation. This equipment generates uses and can radiate radio frequency energy and, if not installed and used in accordance with the instructions, may cause harmful interference to radio communications. However, there is no guarantee that interference will not occur in a particular installation. If this equipment does cause harmful interference to radio or television reception, which can be determined by turning the equipment off and on, the user is encouraged to try to correct the interference by one or more of the following measures:

- Reorient or relocate the receiving antenna.
- Increase the separation between the equipment and receiver.
- Connect the equipment into an outlet on a circuit different from that to which the receiver is connected.
- Consult the dealer or an experienced radio/TV technician for help.

RF warning for Portable device: The device has been evaluated to meet general RF exposure requirement. The device can be used in portable exposure condition without restriction.