



东莞市一佳电子通讯科技有限公司

Dongguan YiJia Electronics Communication Technology Co.,Ltd.

规格承认书

SPECIFICATION FOR APPROVAL

日期 Date	2024/05/09
编号 File No	24050901
版本 Revision	1.0

客户
CUSTOMER: 方位


客户料号
CUSTOMER NO: LEADA100053A0

品名
PART NAME: WIFI双频 Antenna L=90mm

供方料号
SUPPLIER NO: YJL01.106.064.301A

送样日期Date: 送样数量Q'TY:

客户确认CUSTOMER APPROVED BY		
APPROVAL	CHIEF	SUPERVISOR

供方确认 SUPPLIER SIGNATURE		
APPROVAL	CHECK	DESIGN
 ChenGuoqiang	XieLi	ChenXingyi

YJ-RD-F04-A



承认书项目表

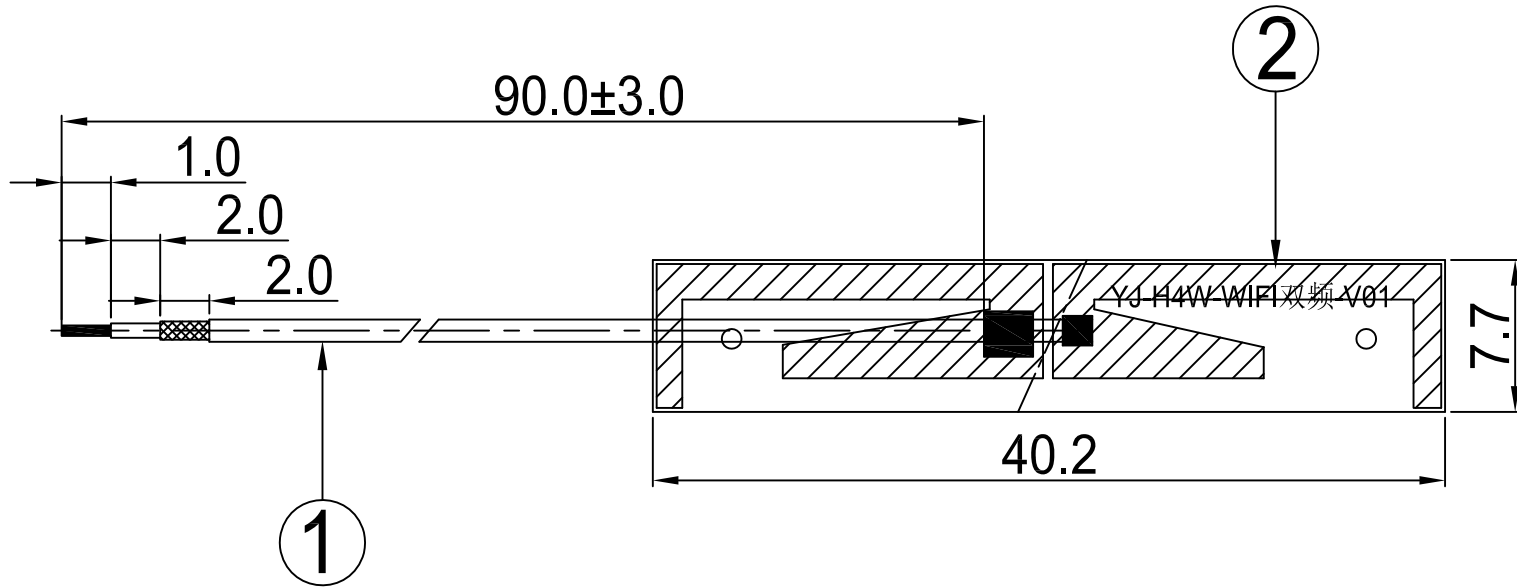
NO	内容 (Contents)	页数 (Number of Page)	页码 (Page Code)
1	承认书封面 (Spec Cover)	1	1
2	承认书项目表 (Spec Item)	1	2
3	工程成品图 (Drawing)	1	3
4	天线规格 (Antenna Specification)	1	4
5	S参数测试 (S Parameter)	1	5
6	无源测试 (Passive Test)	3	6 ~ 8
7	方向图 (Radiation Pattern)	2	9 ~ 10
8	有源测试 (Active Test)	2	11 ~ 12
9	天线装配图 (Antenna Profile)	2	13 ~ 14
10	材质证明 (Material Certificate)	34	15 ~ 48
11	RoHS报告 (RoHS Test Report)	**	**
12	N/A	N/A	N/A
13	-	-	-

RoHS

Compatible

CUSTOMER	
PART NO	

REV.	DESCRIPTION	DATE
△	首次发行	2024-01-10



1

2



东莞市一佳电子通讯科技有限公司
 Dongguan YiJia Electronics Communication Technology Co.,Ltd. Tel:0769-82586086 Fax:0769-82586086

PART NAME: WIFI双频 Antenna L=90mm			DATE: 2024-01-10	
PART NO.: YJL01.106.064.301A				
APPROVED BY	CHECKED BY	DESIGNED BY	 UNITS: mm SCALE: 1/1 REVISION: A	Tolerance X.X ±0.50 X.XX±0.15 X° ±3°
何清军	周颖杰	廖光喜		

2	FPC	40.2*7.7mm	FPC	FPC11XXA.P01	1
1	Coaxial Cable	O.D.1.13 Black	O.D.1.13	COA100XXA.P01	1
NO	PART NAME	DESCRIPTION	Material	Part Number	Q.TY



天线规格

Antenna Specification

Electrical Properties

Frequency	2.4-2.5GHz 5.15-5.85GHz
Impedance	50 Ohm Nominal
V.S.W.R	2.0 Max@2.4-2.5GHz 2.5 Max@5.15-5.85GHz
Gain	5.2 dBi@2.4-2.5GHz 4.0 dBi@5.15-5.85GHz
Radiation	Omni-directional
Polarization	Linear

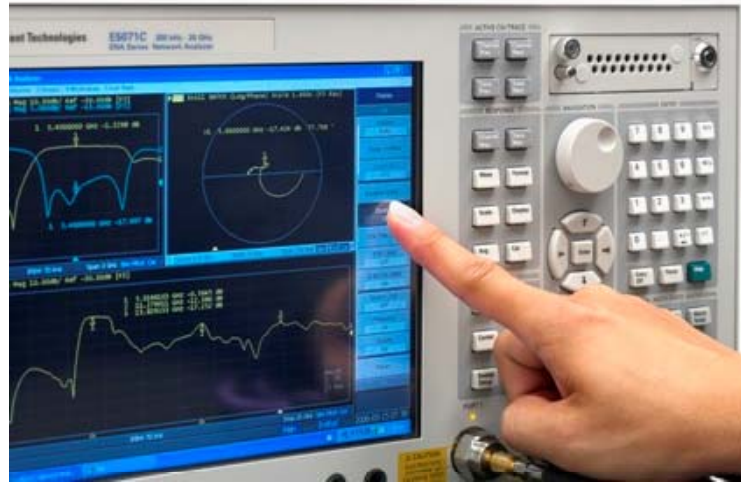
Physical Properties

Connector	None
Cable Type	O.D.1.13mm
Cable Length	90mm
Cable Color	Black
Operating Temp.	-40 ~ +85 °C
Storage Temp / Humidity	25 ± 5 °C / <70%

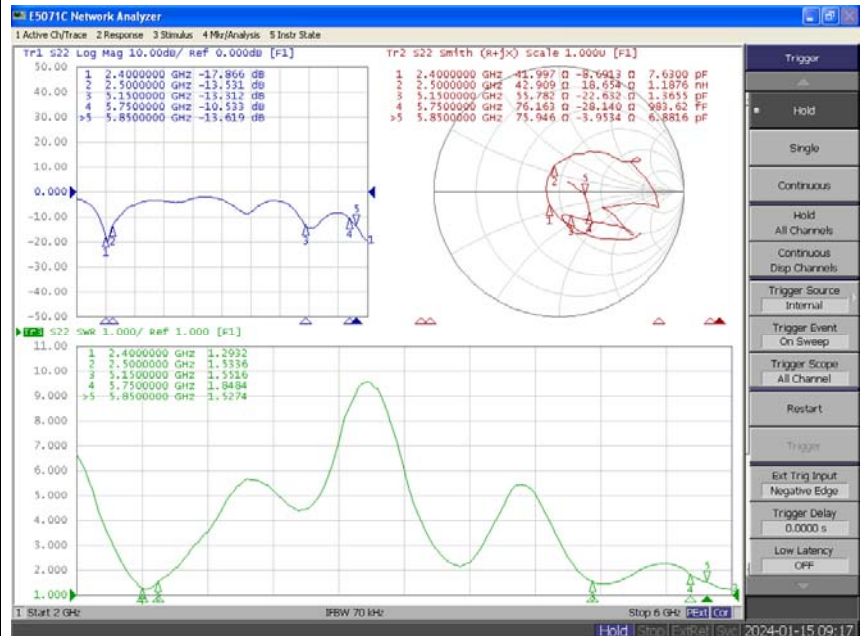


Antenna Performance Test

**Agilent
E5071B**

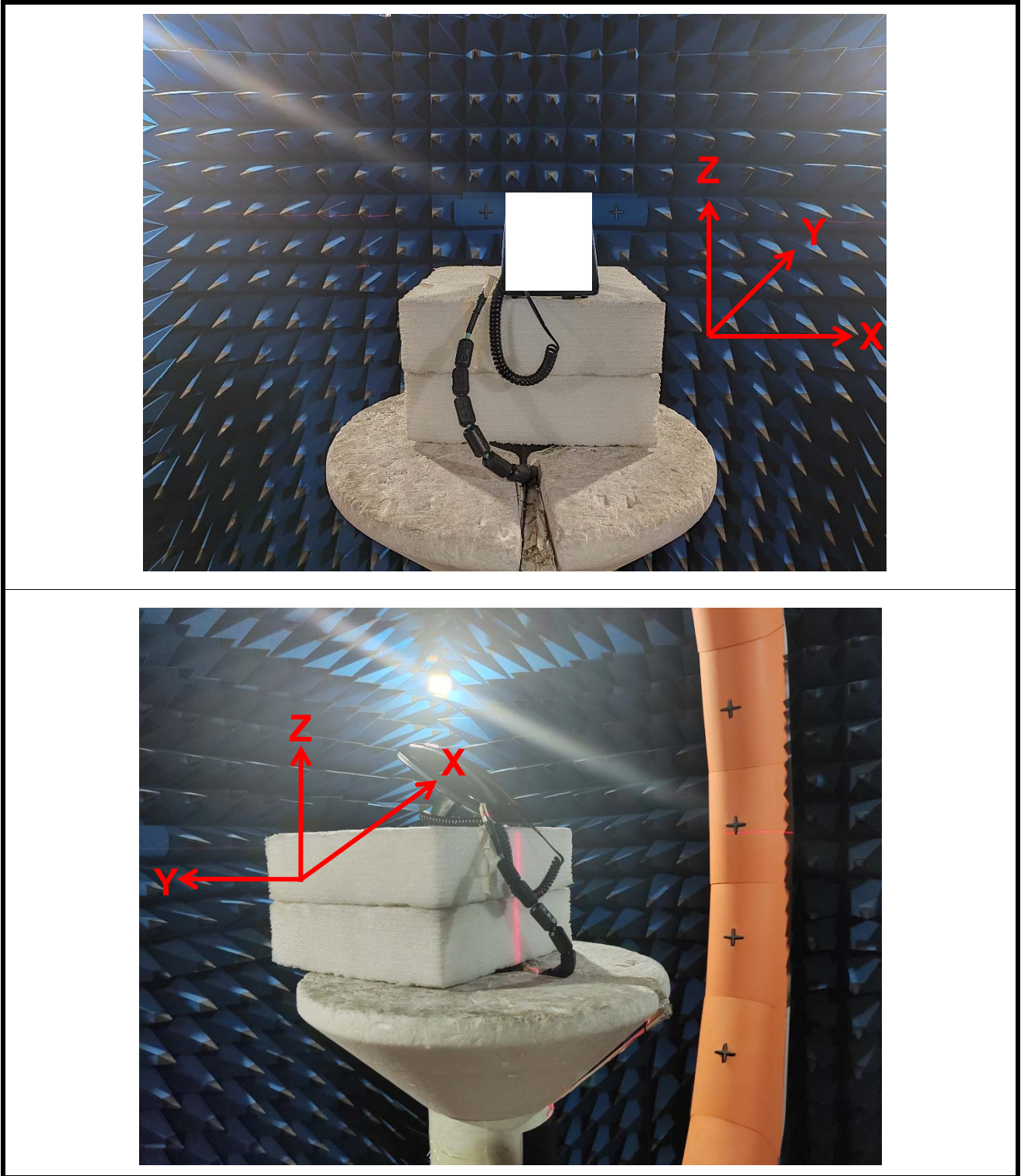


**S
Parameter
Test //
WIFI
Antenna**





Antenna Passive Test





Passive Test For WiFi Antenna(2.4G)			
Freq (MHz)	Effi (%)	Effi (dB)	Gain (dBi)
2400	60.7	-2.2	4.2
2410	61.2	-2.1	4.2
2420	61.7	-2.1	4.1
2430	61.5	-2.1	4.1
2440	61.1	-2.1	4.0
2450	64.0	-1.9	4.1
2460	63.5	-2.0	4.2
2470	65.8	-1.8	4.9
2480	64.1	-1.9	4.8
2490	65.0	-1.9	5.2
2500	62.5	-2.0	4.9

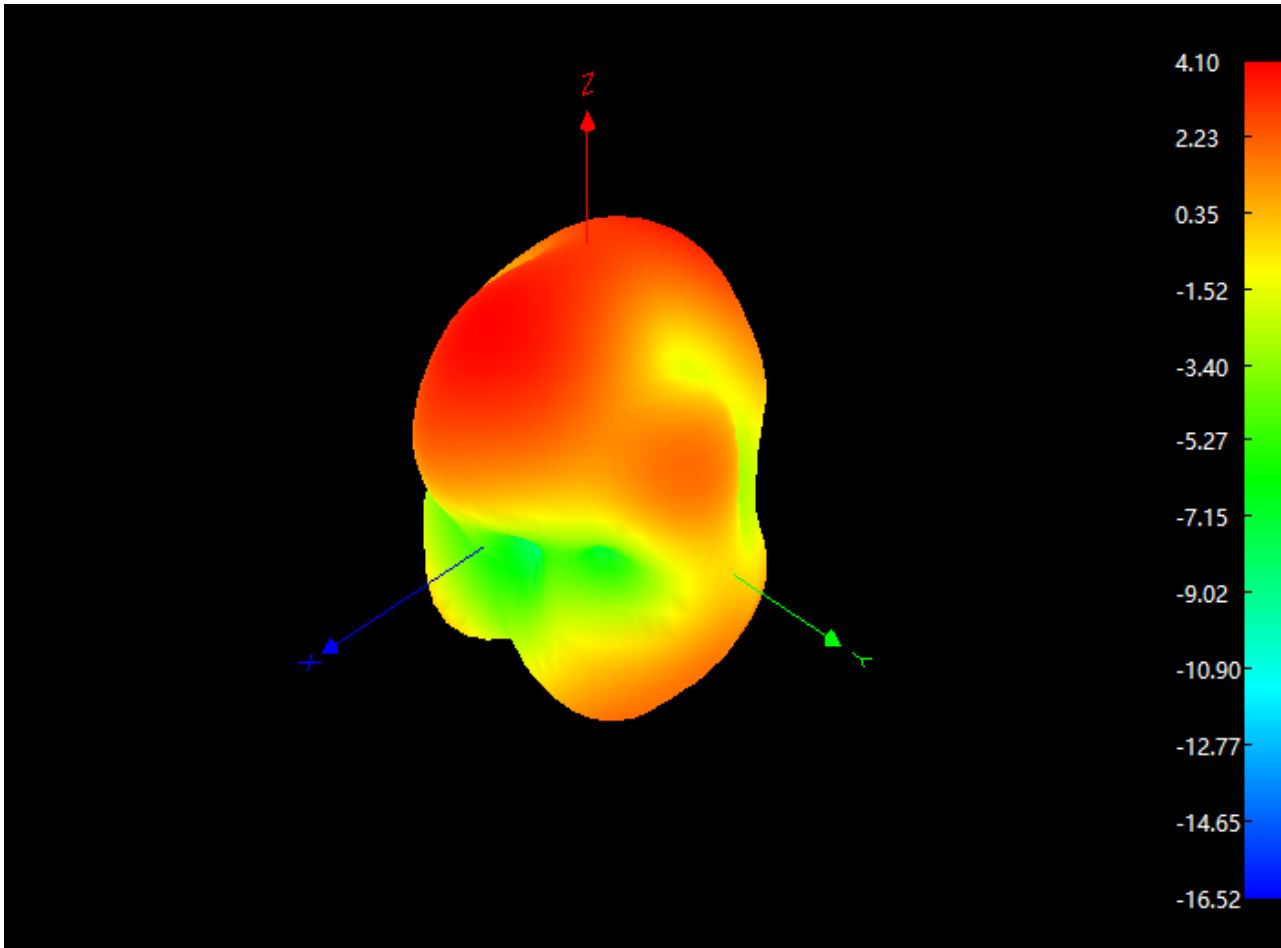


Passive Test For WiFi Antenna(5.8G)

Freq (MHz)	Effi (%)	Effi (dB)	Gain (dBi)
5150	52.0	-2.8	4.0
5200	53.3	-2.7	2.5
5250	57.8	-2.4	3.1
5300	55.7	-2.5	3.2
5350	54.3	-2.7	2.7
5400	60.5	-2.2	3.3
5450	58.5	-2.3	2.9
5500	53.7	-2.7	2.7
5550	58.1	-2.4	2.9
5600	54.2	-2.7	2.6
5650	51.6	-2.9	2.5
5700	53.8	-2.7	2.5
5750	49.8	-3.0	2.4
5800	50.5	-3.0	2.4
5850	57.4	-2.4	3.0

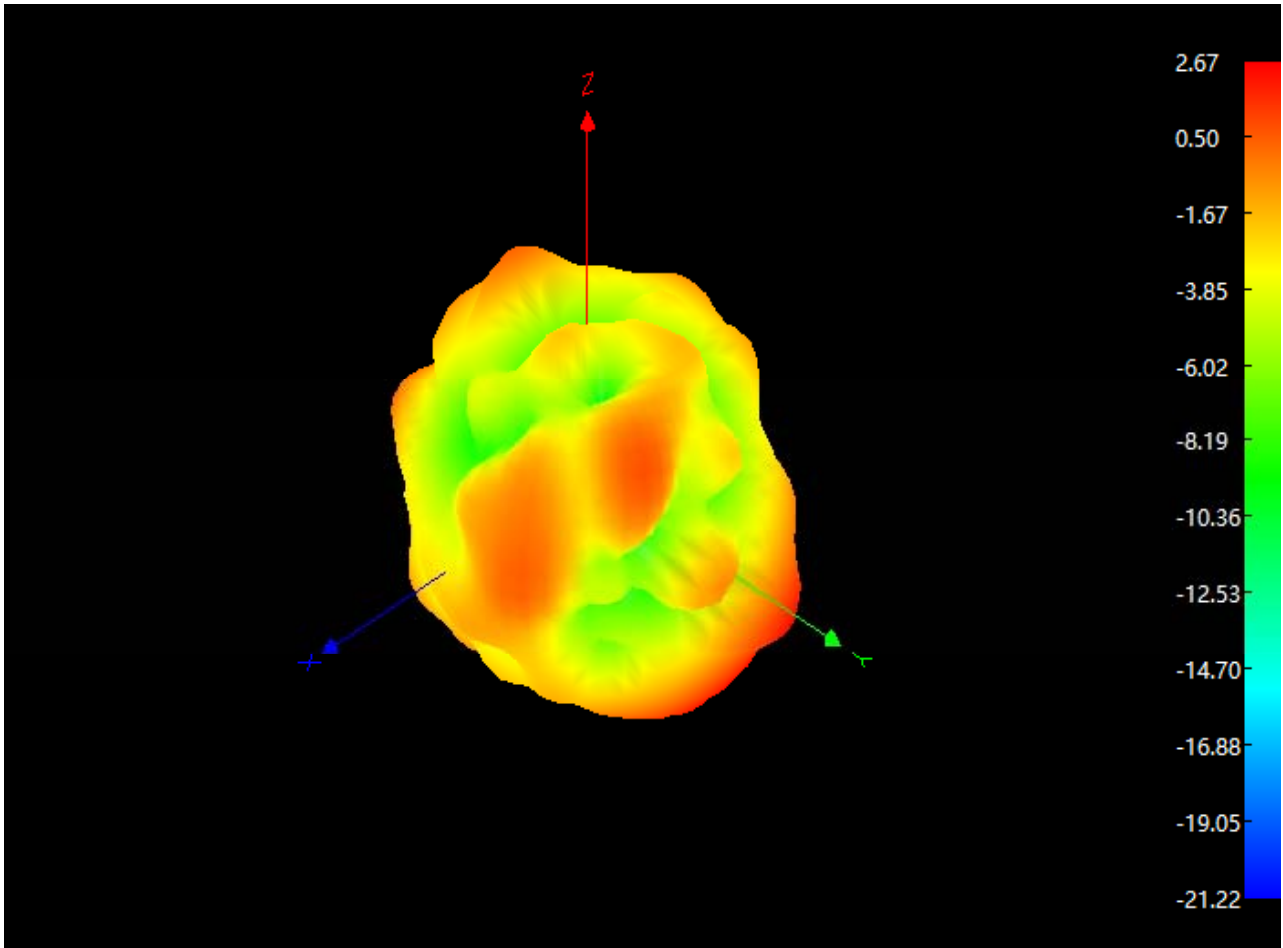


Radiation Pattern For WiFi Antenna(2450MHz)



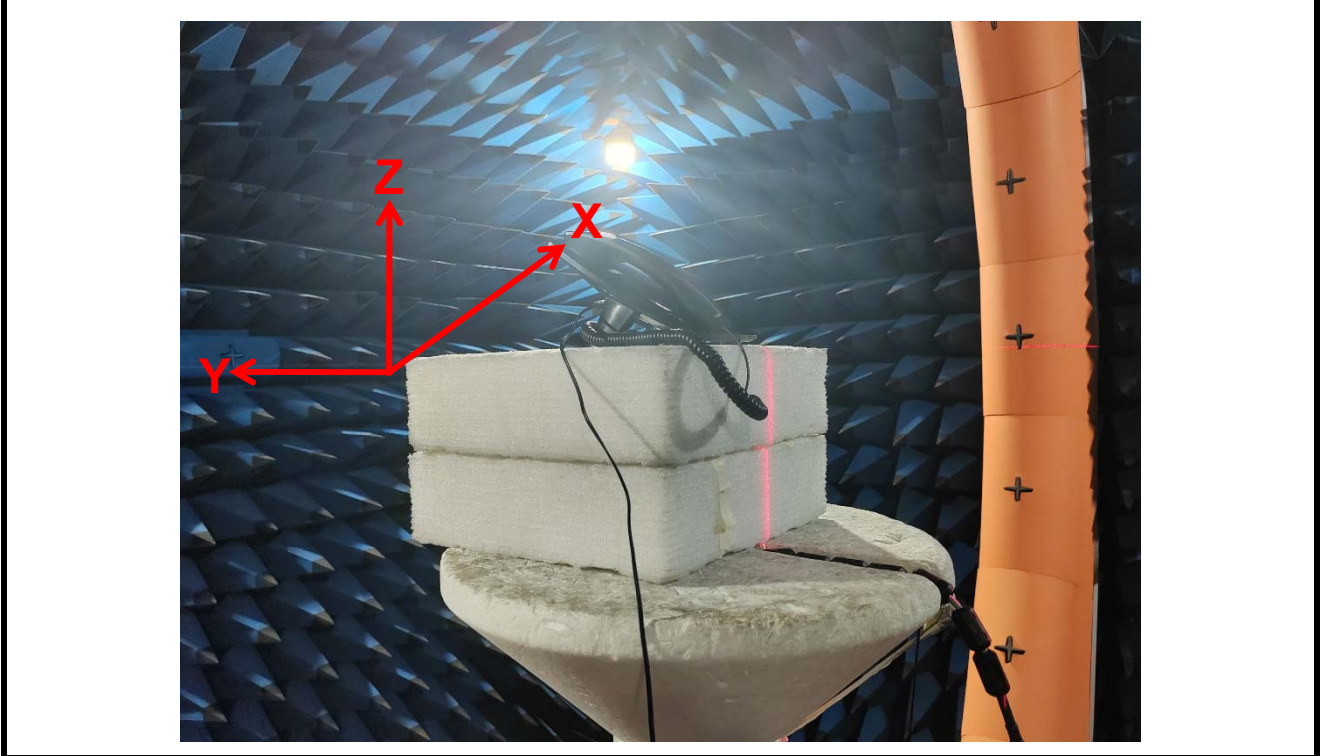
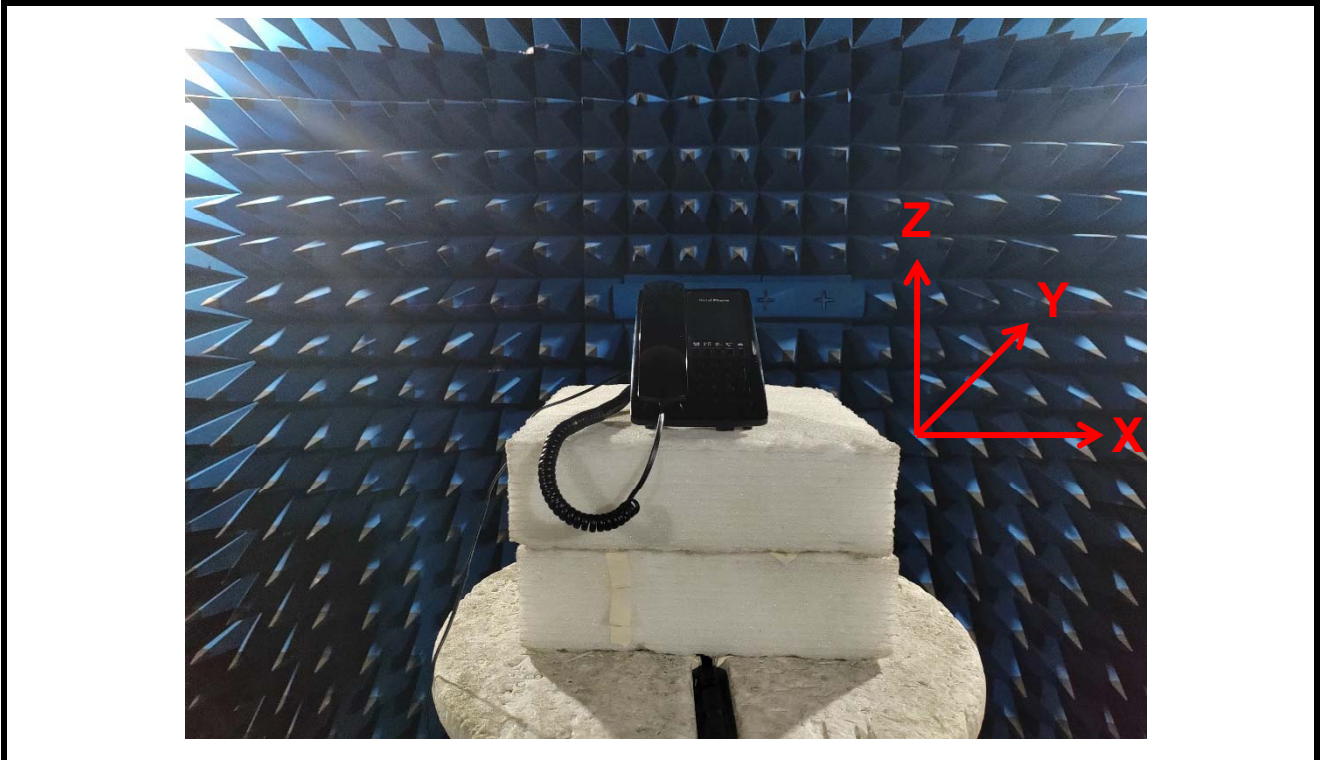


Radiation Pattern For WiFi Antenna(5500MHz)





Antenna Active Test





Active Test For WIFI Antenna					
Band	Channel	Data Rate	TRP	Data Rate	TIS
WIFI 2.4G 802.11b	1	11Mbps	16.9	11Mbps	-81.9
	6		16.6		-82.6
	11		16.7		-81.2
WIFI 5G 802.11a	36	54Mbps	16.5	54Mbps	-71.2
	100		16.2		-71.6
	165		16.4		-71.0

