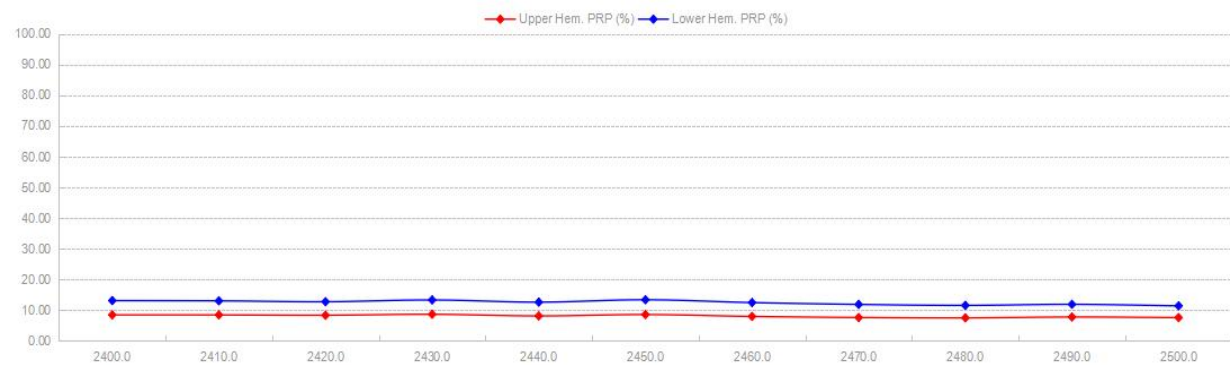
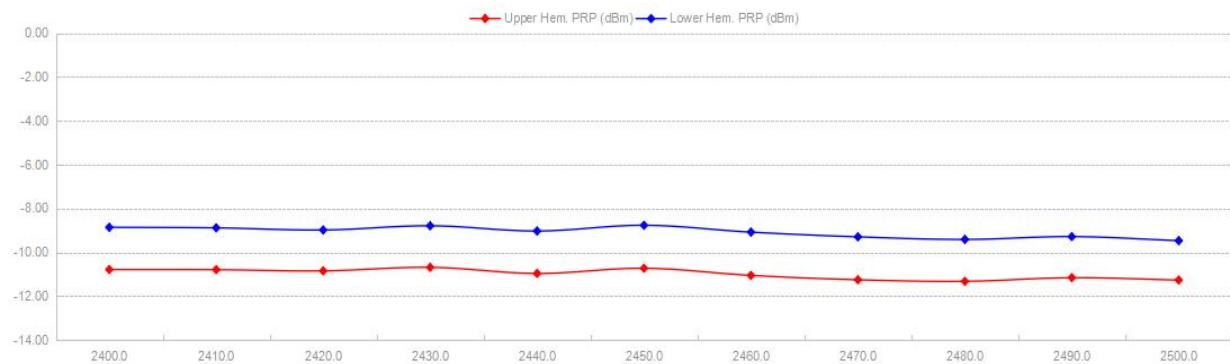
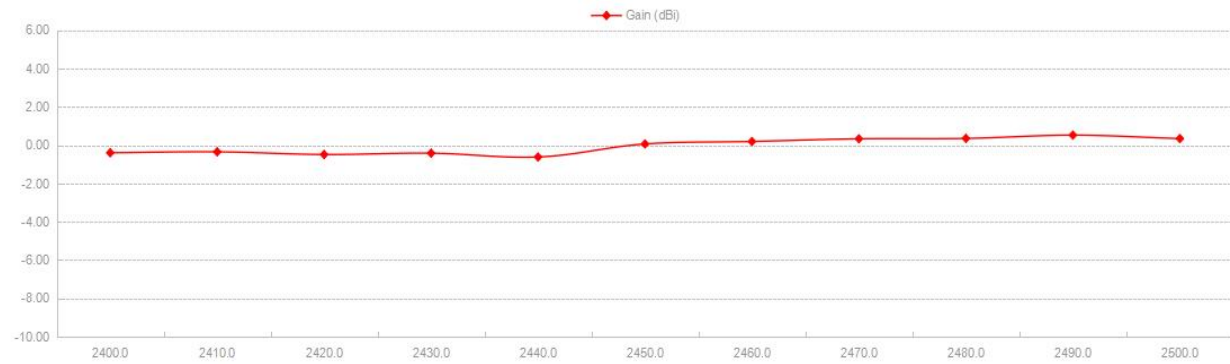
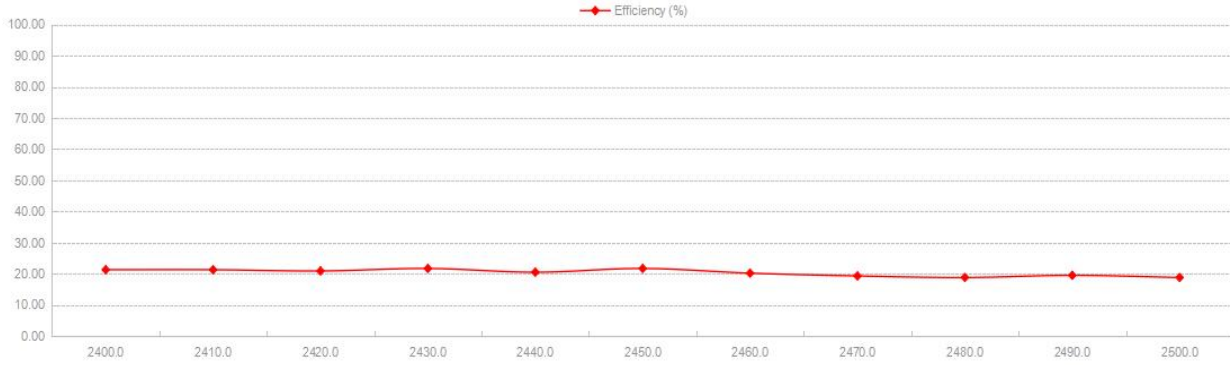


# Shenzhen Qianmu Communication Technology Co., Ltd

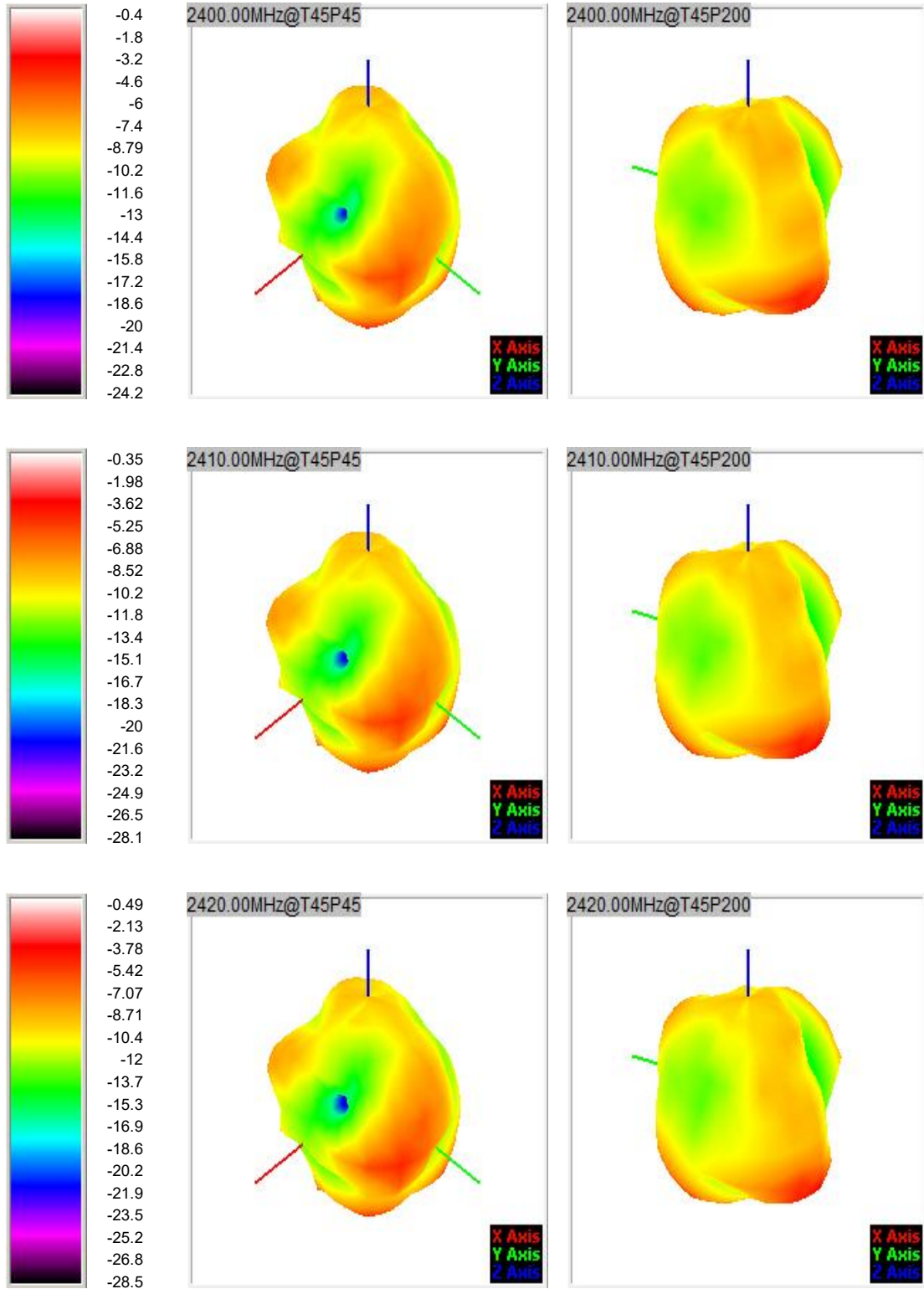
No. 425.443, 4th Floor, Building A2, Huafeng Zhigu High tech Industrial Park, Gushu Aviation Road, Xixiang, Bao'an District, Shenzhen

<b>FETUKEJ1</b>											
Frequency ID	1	2	3	4	5	6	7	8	9	10	11
Frequency (MHz)	2400.0	2410.0	2420.0	2430.0	2440.0	2450.0	2460.0	2470.0	2480.0	2490.0	2500.0
<b>Point Values</b>											
Ant. Port Input Pwr. (dBm)	0.00	0.00	0.00	0.00	0.00	0.00	0.00	0.00	0.00	0.00	0.00
Tot. Rad. Pwr. (dBm)	-6.71	-6.73	-6.81	-6.63	-6.88	-6.63	-6.95	-7.16	-7.26	-7.11	-7.27
Peak EIRP (dBm)	-0.40	-0.35	-0.49	-0.42	-0.62	0.06	0.19	0.33	0.35	0.52	0.34
Directivity (dBi)	6.31	6.38	6.32	6.21	6.26	6.69	7.14	7.48	7.61	7.63	7.61
Efficiency (dB)	-6.71	-6.73	-6.81	-6.63	-6.88	-6.63	-6.95	-7.16	-7.26	-7.11	-7.27
Efficiency (%)	21.30	21.30	20.90	21.70	20.50	21.70	20.20	19.30	18.80	19.50	18.80
Gain (dBi)	-0.40	-0.35	-0.49	-0.42	-0.62	0.06	0.19	0.33	0.35	0.52	0.34
NHPRP ±Pi/4 (dBm)	-8.46	-8.46	-8.55	-8.38	-8.69	-8.47	-8.82	-9.04	-9.15	-8.98	-9.10
NHPRP ±Pi/6 (dBm)	-10.10	-10.08	-10.18	-10.04	-10.37	-10.18	-10.53	-10.76	-10.86	-10.68	-10.76
NHPRP ±Pi/8 (dBm)	-11.42	-11.38	-11.46	-11.34	-11.69	-11.51	-11.85	-12.08	-12.17	-11.97	-12.03
Upper Hem. PRP (dBm)	-10.79	-10.80	-10.85	-10.69	-10.97	-10.73	-11.06	-11.25	-11.33	-11.16	-11.27
Lower Hem. PRP (dBm)	-8.86	-8.88	-8.98	-8.79	-9.03	-8.77	-9.08	-9.30	-9.41	-9.28	-9.47
Upper Hem. PRP (%)	8.34	8.33	8.22	8.54	8.01	8.45	7.84	7.49	7.37	7.66	7.47
Lower Hem. PRP (%)	13.00	12.93	12.64	13.21	12.51	13.28	12.36	11.76	11.45	11.79	11.30



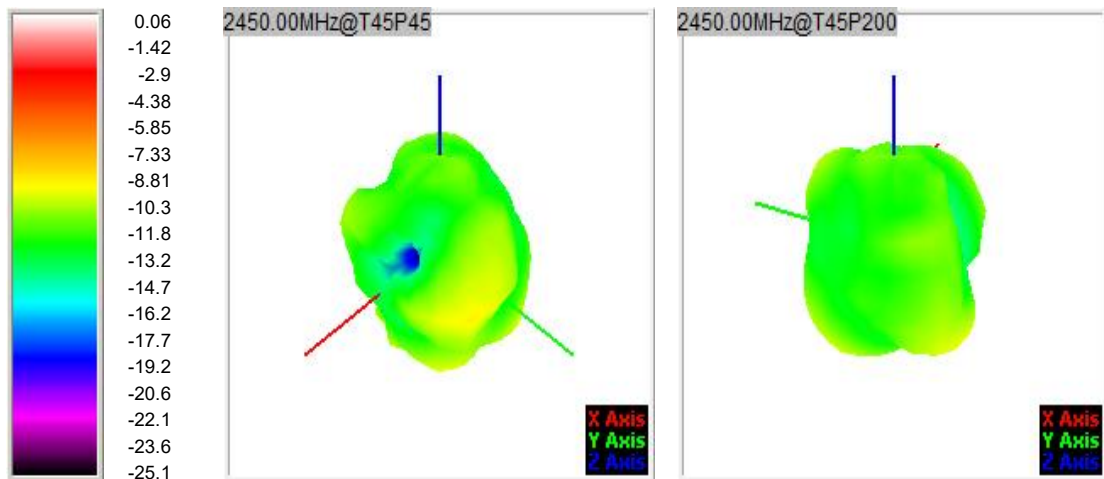
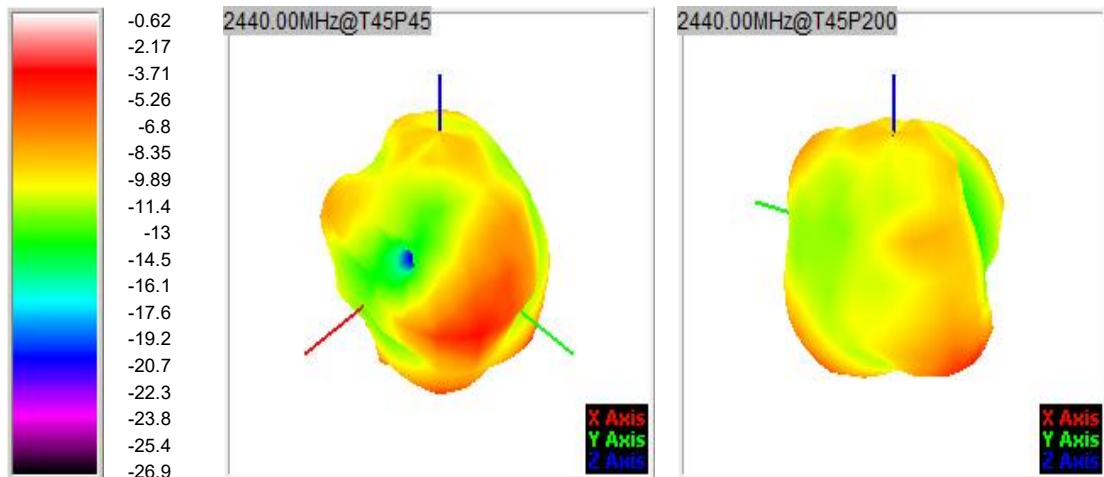
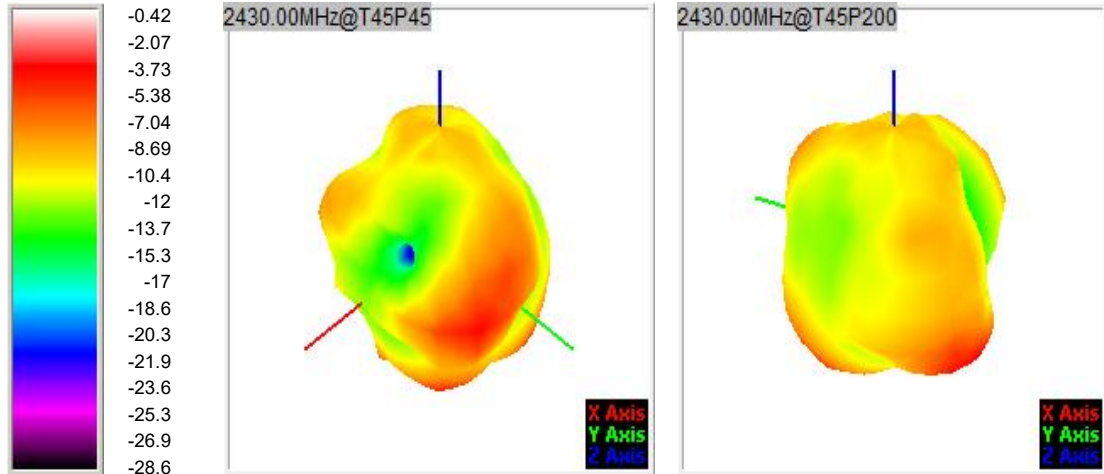
# Shenzhen Qianmu Communication Technology Co., Ltd

No. 425.443, 4th Floor, Building A2, Huafeng Zhigu High tech Industrial Park, Gushu Aviation Road, Xixiang, Bao'an District, Shenzhen



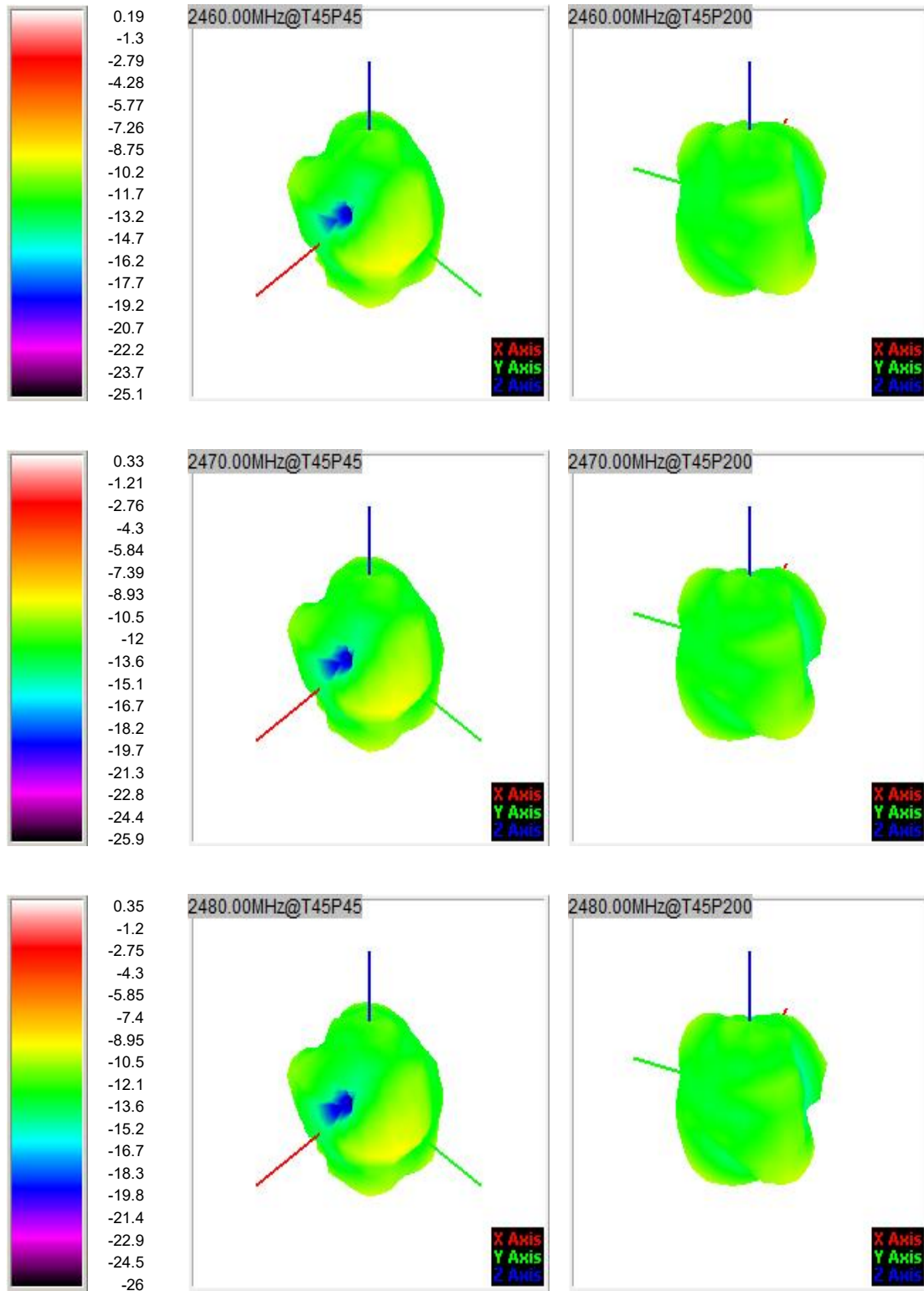
# Shenzhen Qianmu Communication Technology Co., Ltd

No. 425.443, 4th Floor, Building A2, Huafeng Zhigu High tech Industrial Park, Gushu Aviation Road, Xixiang, Bao'an District, Shenzhen



# Shenzhen Qianmu Communication Technology Co., Ltd

No. 425.443, 4th Floor, Building A2, Huafeng Zhigu High tech Industrial Park, Gushu Aviation Road, Xixiang, Bao'an District, Shenzhen



# Shenzhen Qianmu Communication Technology Co., Ltd

No. 425.443, 4th Floor, Building A2, Huafeng Zhigu High tech Industrial Park, Gushu Aviation Road, Xixiang, Bao'an District, Shenzhen

