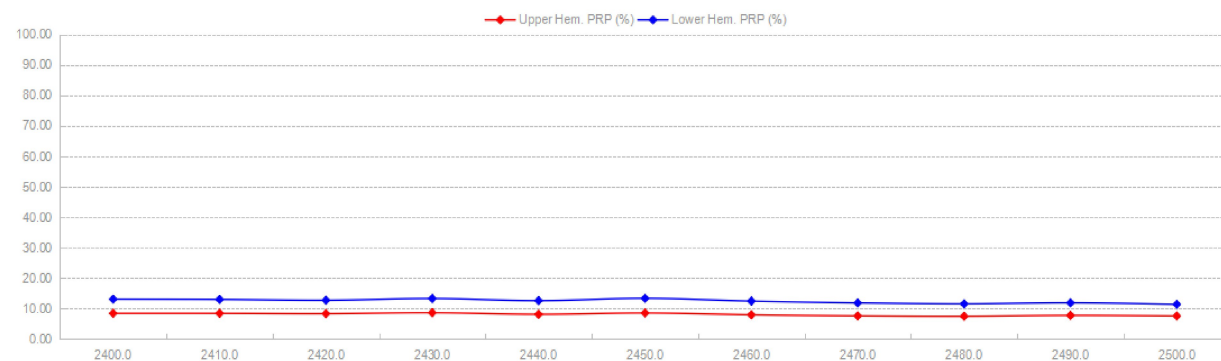
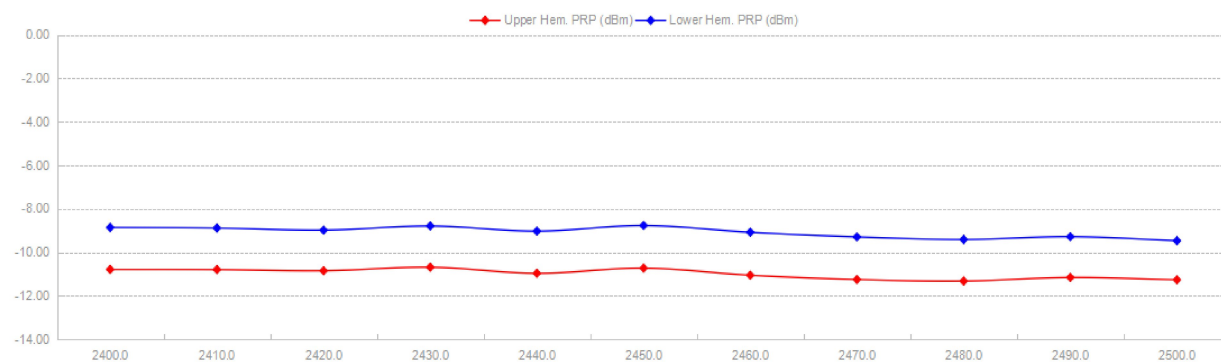
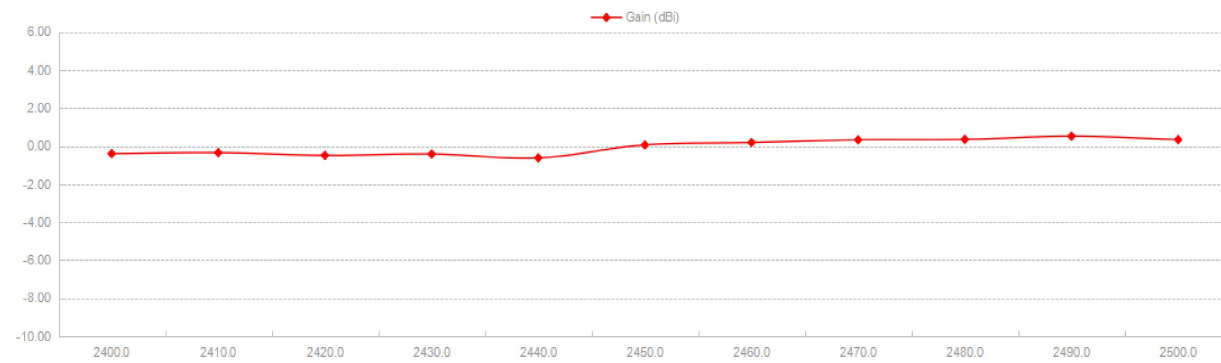
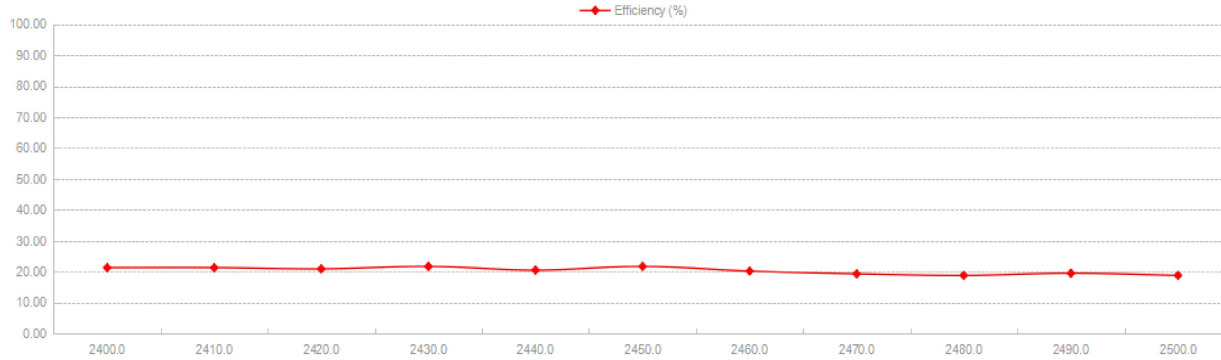




Shenzhen Qianmu Communication Technology Co., Ltd

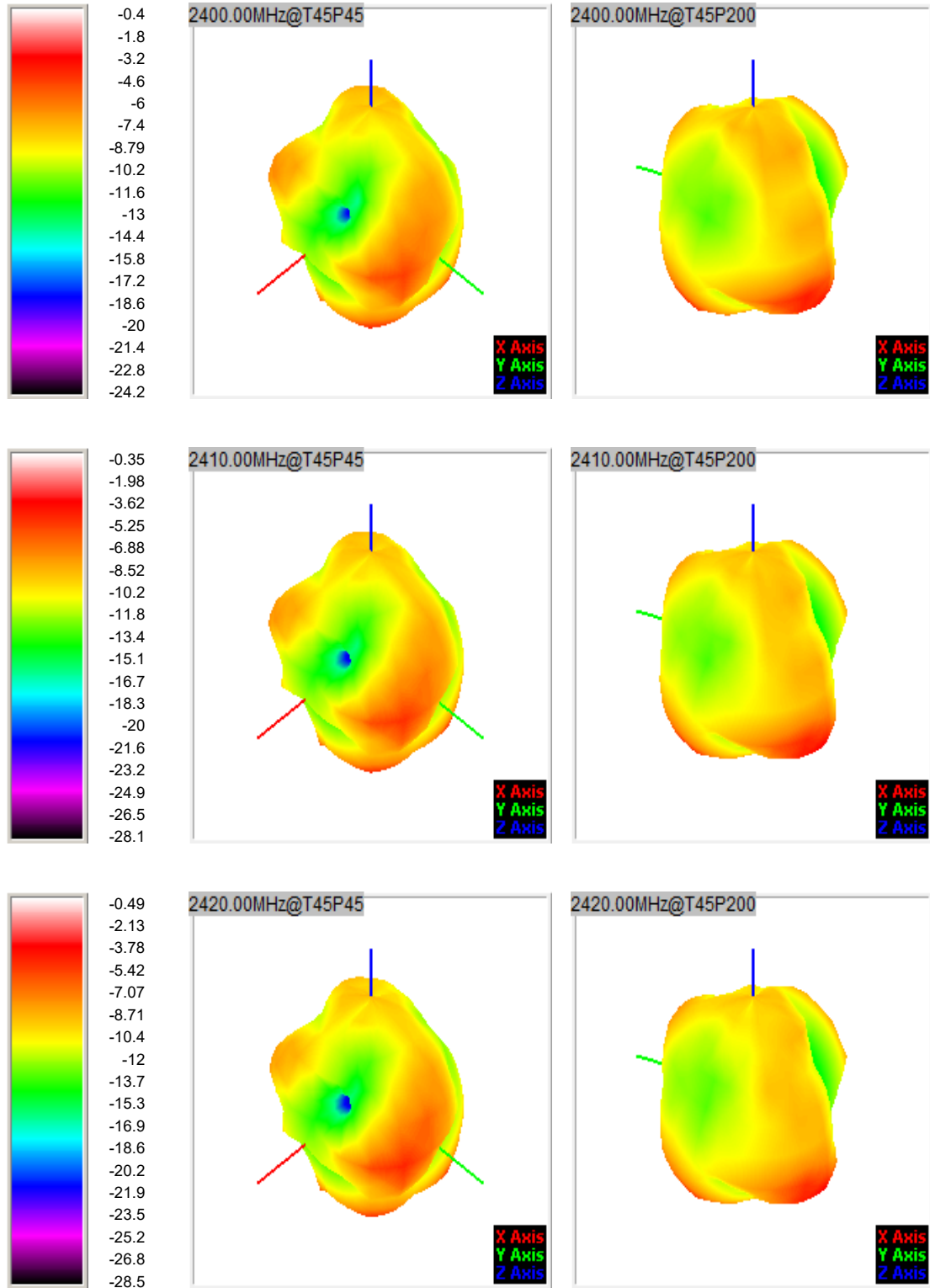
No. 425.443, 4th Floor, Building A2, Huafeng Zhigu High tech Industrial Park, Gushu Aviation Road, Xixiang, Bao'an District, Shenzhen

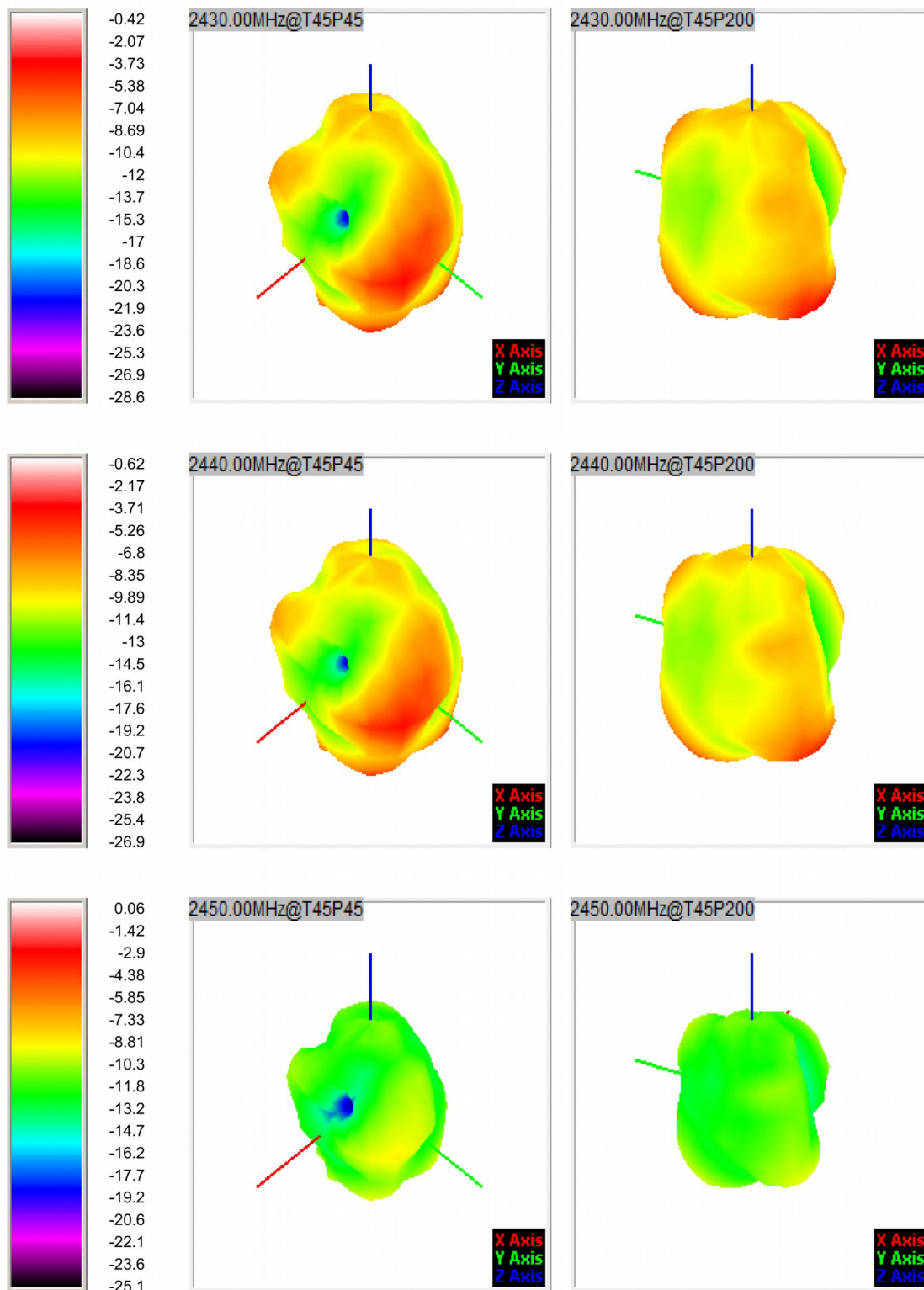
Frequency ID	1	2	3	4	5	6	7	8	9	10	11
Frequency (MHz)	2400.0	2410.0	2420.0	2430.0	2440.0	2450.0	2460.0	2470.0	2480.0	2490.0	2500.0
Point Values											
Ant. Port Input Pwr. (dBm)	0.00	0.00	0.00	0.00	0.00	0.00	0.00	0.00	0.00	0.00	0.00
Tot. Rad. Pwr. (dBm)	-6.71	-6.73	-6.81	-6.63	-6.88	-6.63	-6.95	-7.16	-7.26	-7.11	-7.27
Peak EIRP (dBm)	-0.40	-0.35	-0.49	-0.42	-0.62	0.06	0.19	0.33	0.35	0.52	0.34
Directivity (dBi)	6.31	6.38	6.32	6.21	6.26	6.69	7.14	7.48	7.61	7.63	7.61
Efficiency (dB)	-6.71	-6.73	-6.81	-6.63	-6.88	-6.63	-6.95	-7.16	-7.26	-7.11	-7.27
Efficiency (%)	21.30	21.30	20.90	21.70	20.50	21.70	20.20	19.30	18.80	19.50	18.80
Gain (dBi)	-0.40	-0.35	-0.49	-0.42	-0.62	0.00	-0.41	-0.42	-0.39	-0.44	-0.39
NHPRP \pm Pi/4 (dBm)	-8.46	-8.46	-8.55	-8.38	-8.69	-8.47	-8.82	-9.04	-9.15	-8.98	-9.10
NHPRP \pm Pi/6 (dBm)	-10.10	-10.08	-10.18	-10.04	-10.37	-10.18	-10.53	-10.76	-10.86	-10.68	-10.76
NHPRP \pm Pi/8 (dBm)	-11.42	-11.38	-11.46	-11.34	-11.69	-11.51	-11.85	-12.08	-12.17	-11.97	-12.03
Upper Hem. PRP (dBm)	-10.79	-10.80	-10.85	-10.69	-10.97	-10.73	-11.06	-11.25	-11.33	-11.16	-11.27
Lower Hem. PRP (dBm)	-8.86	-8.88	-8.98	-8.79	-9.03	-8.77	-9.08	-9.30	-9.41	-9.28	-9.47
Upper Hem. PRP (%)	8.34	8.33	8.22	8.54	8.01	8.45	7.84	7.49	7.37	7.66	7.47
Lower Hem. PRP (%)	13.00	12.93	12.64	13.21	12.51	13.28	12.36	11.76	11.45	11.79	11.30



Shenzhen Qianmu Communication Technology Co., Ltd

No. 425.443, 4th Floor, Building A2, Huafeng Zhigu High tech Industrial Park, Gushu Aviation Road, Xixiang, Bao'an District, Shenzhen

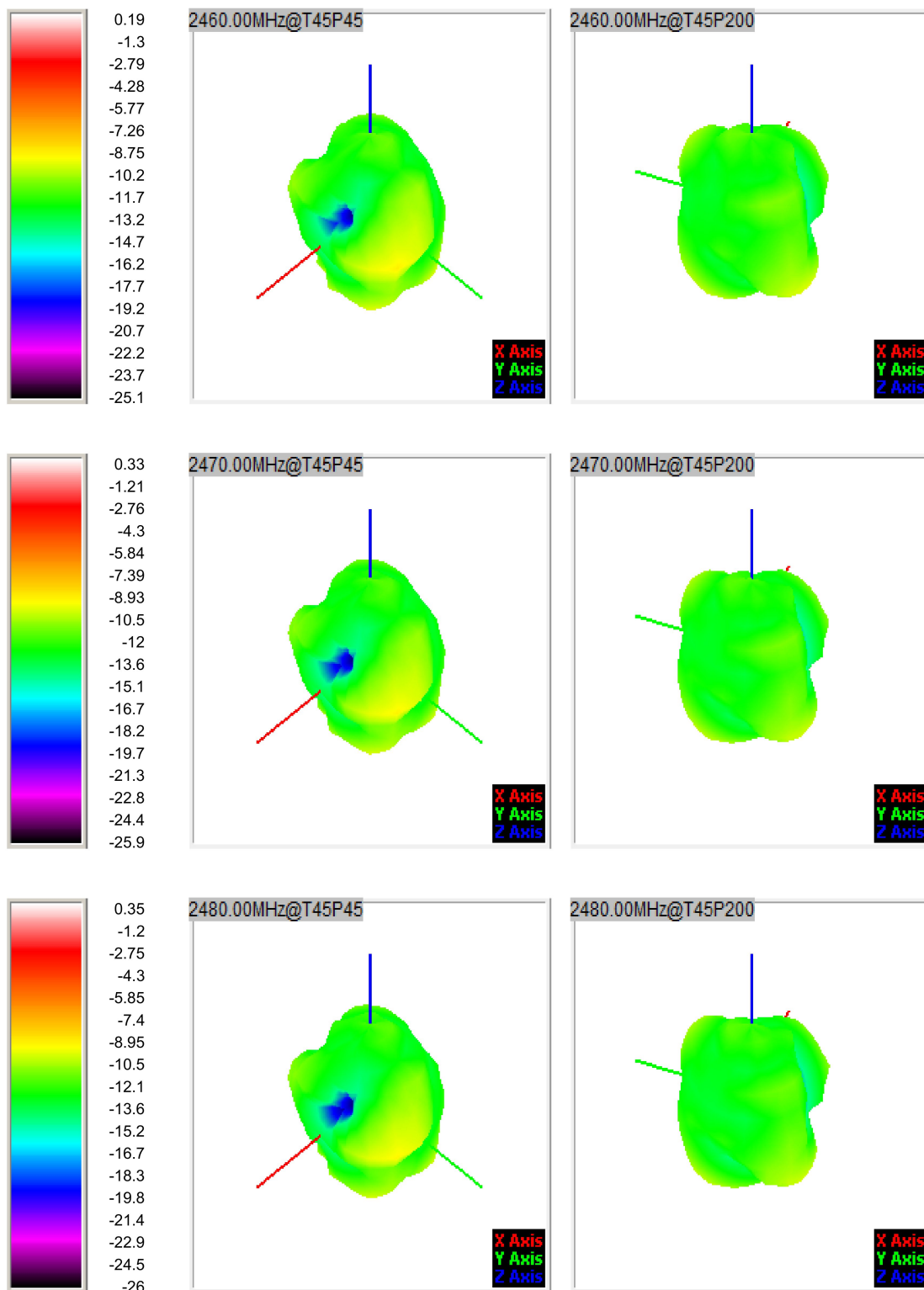


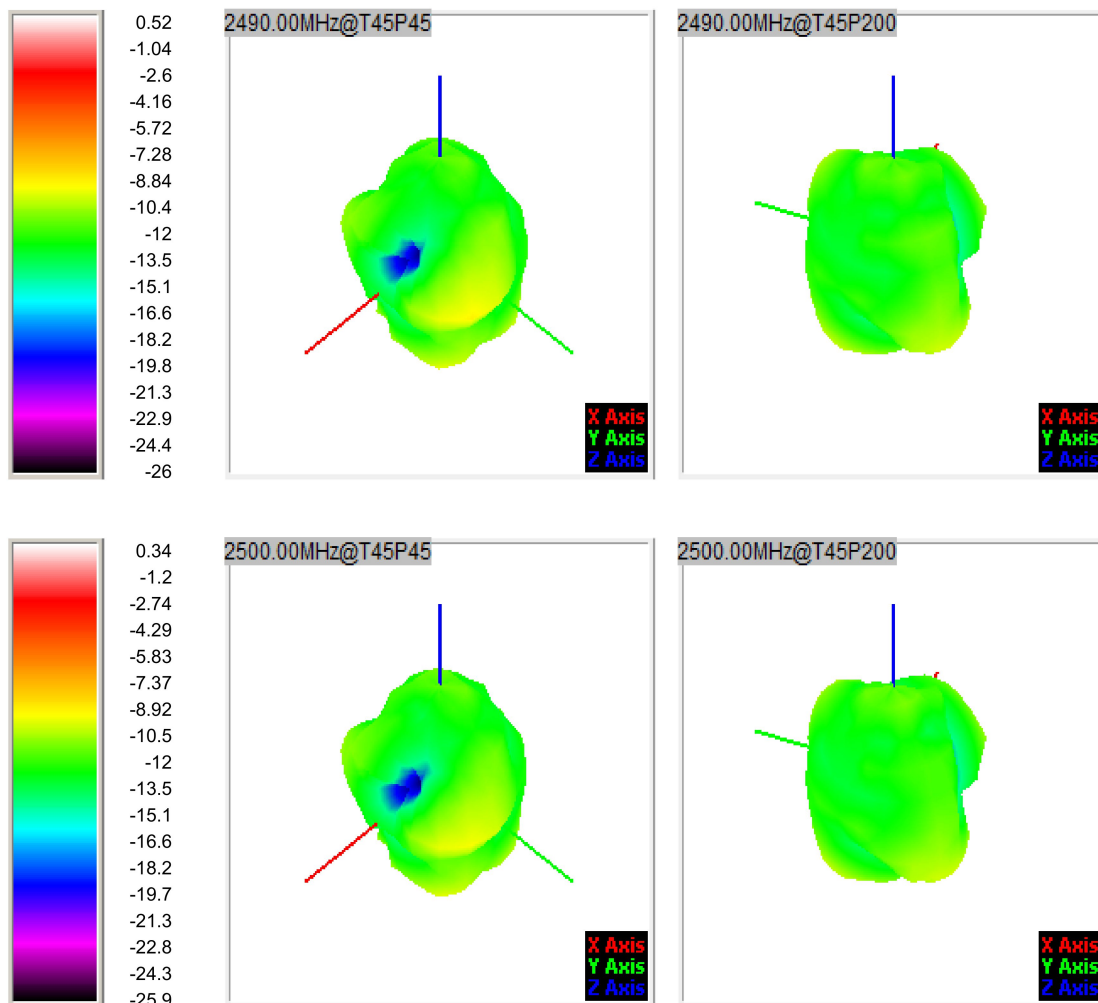


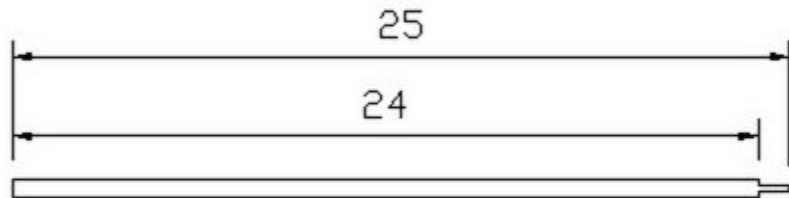
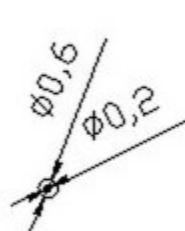


Shenzhen Qianmu Communication Technology Co., Ltd

No. 425.443, 4th Floor, Building A2, Huafeng Zhigu High tech Industrial Park, Gushu Aviation Road, Xixiang, Bao'an District, Shenzhen







UNLESS SPECIFIED TOLERANCES ARE	Third Angle Projection	Product Model		
		Drawing Number		
LINEAR:	$\pm 0,2$ $\pm 0,1$ $\pm 0,05$	Unit	Scale	Sheet
ANGLE:	$\pm 0,5^\circ$ $\pm 0,25$	MM	1 : 1	1 OF 1
RADIUS:				