

APPENDIX C. TEST SETUP PHOTOGRAPHS

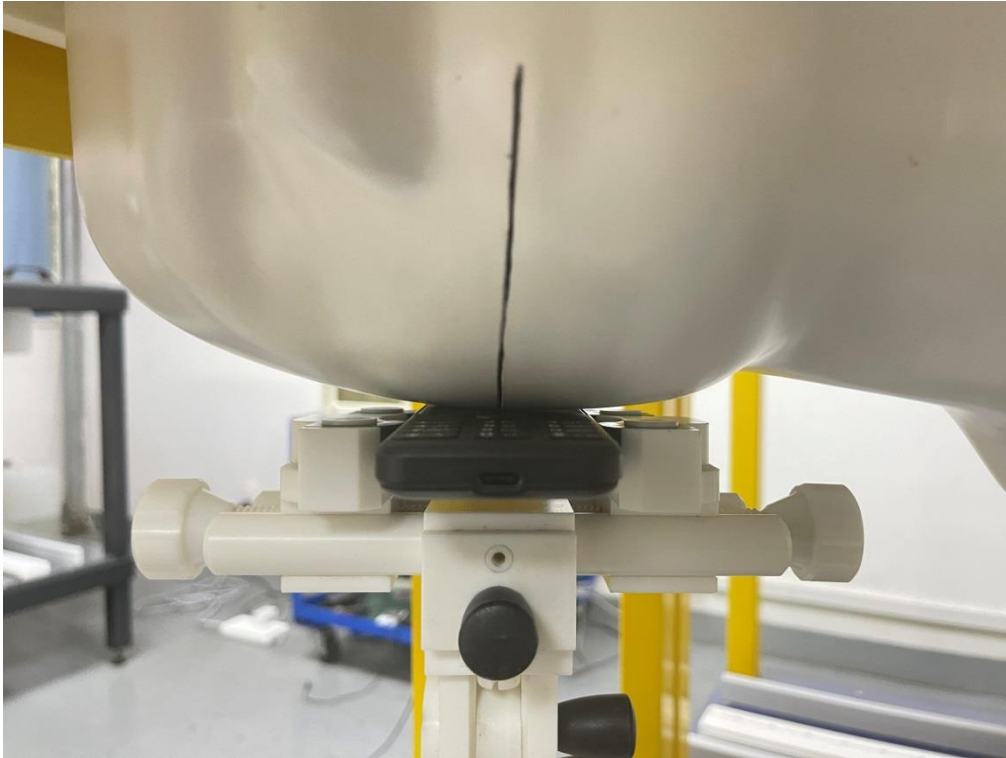
LEFT-CHEEK TOUCH



LEFT-TILT 15°



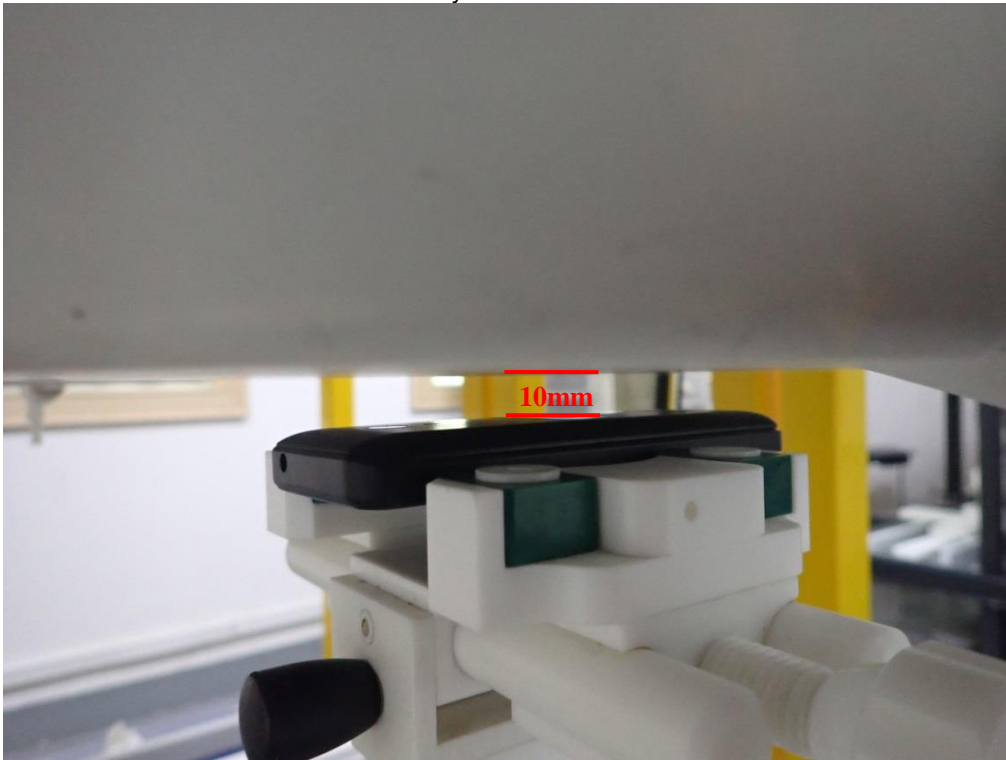
RIGHT- CHEEK TOUCH



RIGHT-TILT 15°



Body Back 10mm

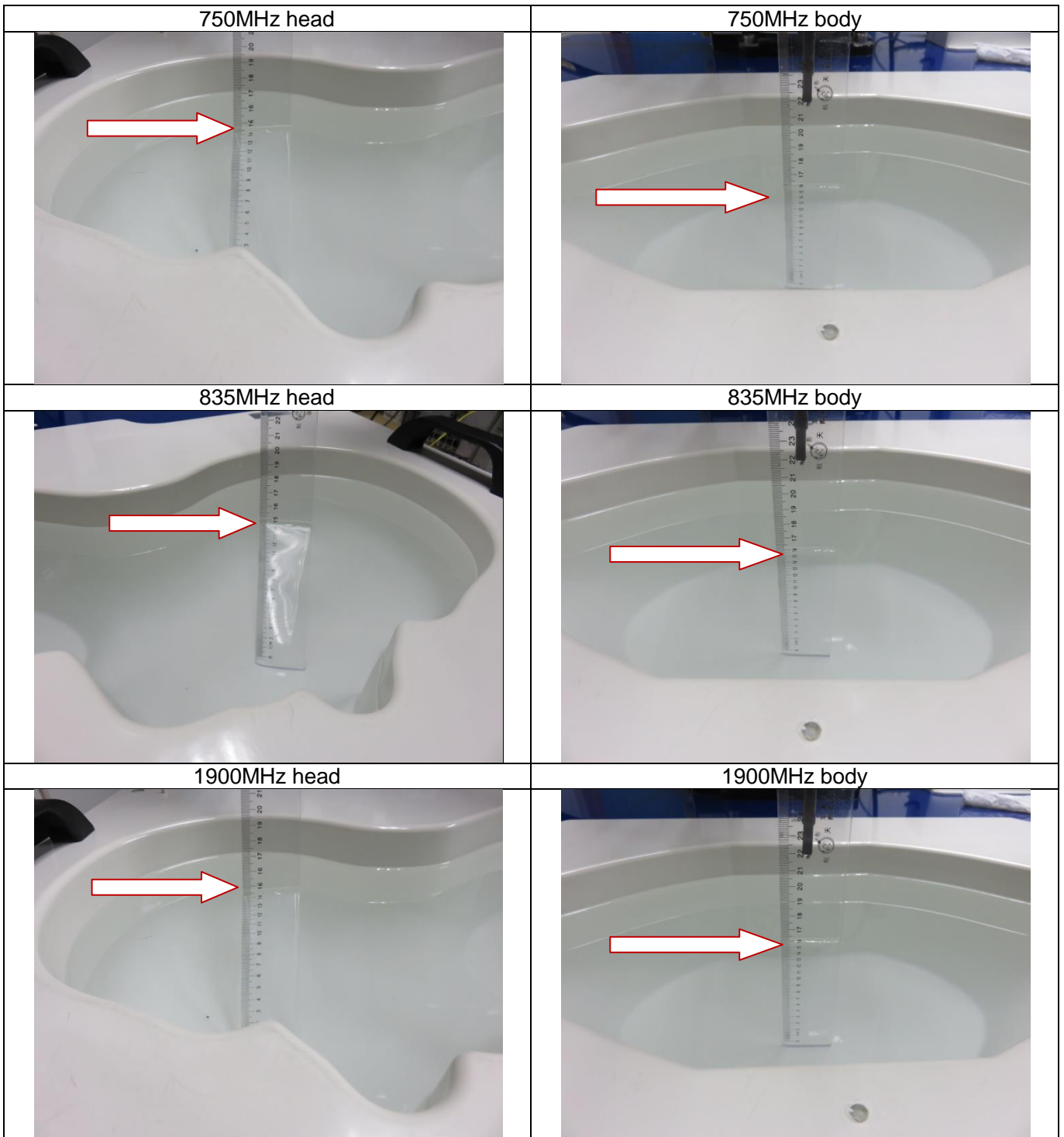


Body Front 10mm

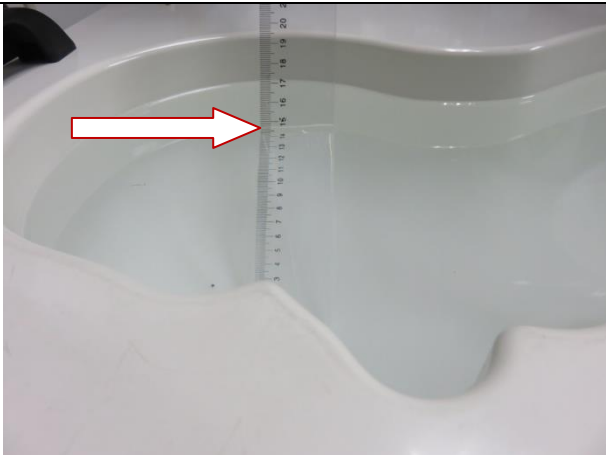


DEPTH OF THE LIQUID IN THE PHANTOM—ZOOM IN

Note : The position used in the measurement were according to IEEE 1528-2013



1750MHz head



1750MHz body



2600MHz head



2600MHz body

