
制造商

中文：深圳市戴乐体感科技有限公司

地址：深圳市宝安区西乡街道前海科兴科学
园 6 栋 407

Manufacturer:

Shenzhen Dale SensorTech Co Ltd;

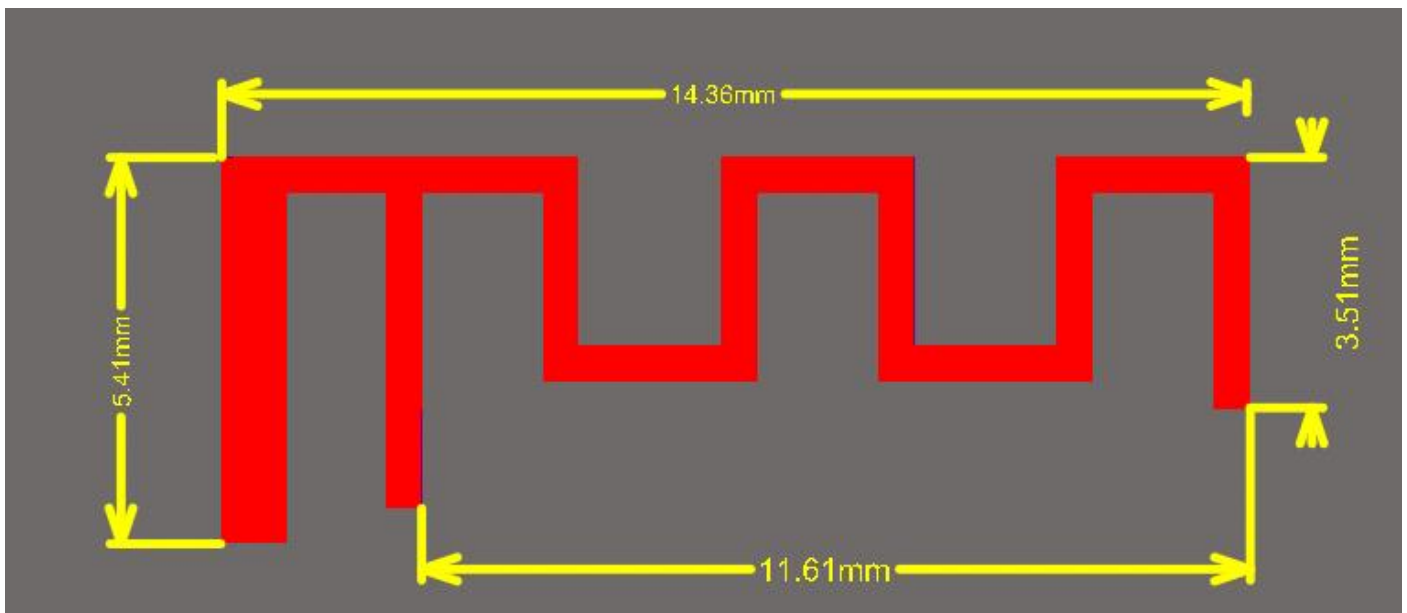
Address: 407, Building 6Qianhai Kexing
Science ParkBao'an District, Shenzhen

Antenna Specification

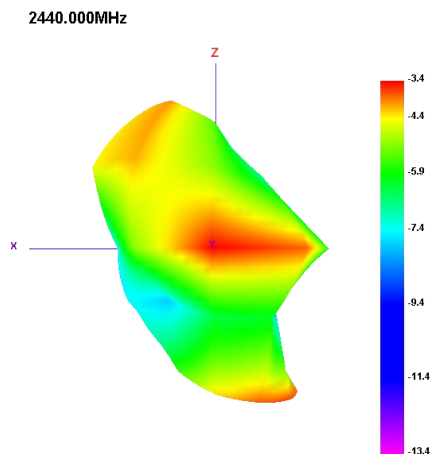
Electrical Specification

Working Frequency Range	2400 ~2480 MHz
Peak Gain	-3.27dBi (Typ.)
Impedance	50 Ohm
VSWR	3.0(Max)
Polarization	Linear
Azimuth Beamwidth	Omni-directional
Antenna Type	PCB antenna
Antenna Model	2.4GHz ANT

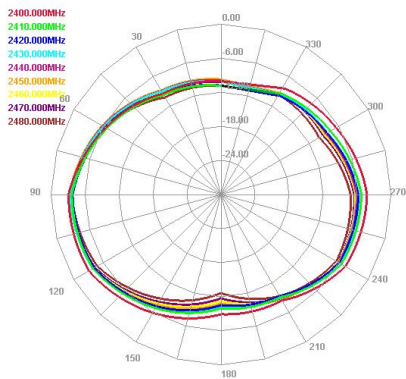
Antenna dimension



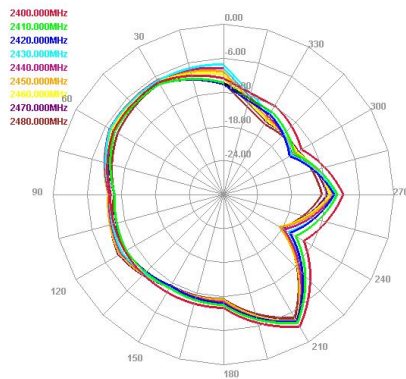
Radiation Pattern



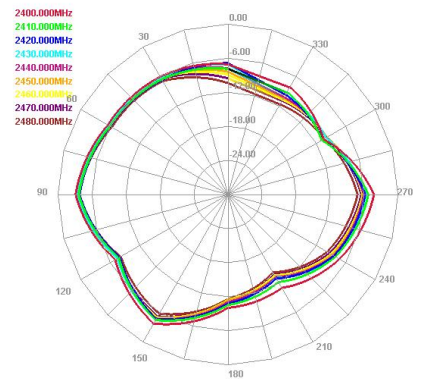
Horizontal



E1 Face



E2 Face



Antenna passive parameters

Frequency (MHz)	Efficiency (%)	Mean gain (dBi)	Peak Gain (dBi)
2400	16.4	-7.85	-3.56
2410	15.66	-8.05	-3.79
2420	17.06	-7.68	-3.4
2430	16.72	-7.77	-3.39
2440	16.63	-7.79	-3.27
2450	16.05	-7.95	-3.28
2460	15.46	-8.11	-3.3
2470	13.94	-8.56	-3.67
2480	16.4	-7.85	-3.56