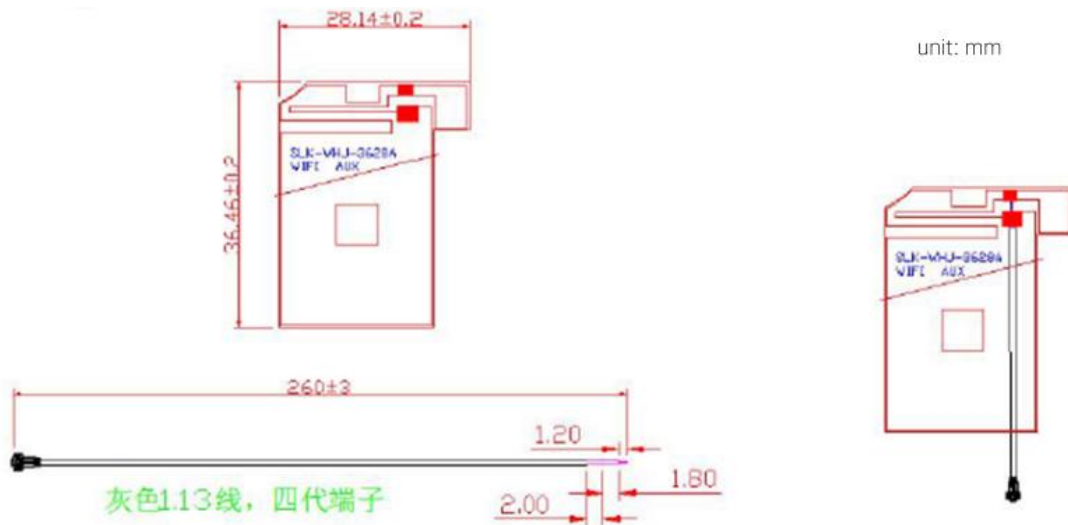


1. Antenna Description:

Antenna type	PIFA antenna
Model	SLK-WHJ-3628A-M-260IV-G
Frequency range	2400-2500MHz
Manufacturer	ShenZhen WeiHejia Electronics Technology CO.,LTD
ANT Peak Gain	1.00 dBi

2. Antenna Photo:



3. Test Equipment & Conditions

3.1 Test instrument

VSWR is tested using Agilent E5071B connected to a hand mechanism, and the status is free space.

3.2 Test environment and methods

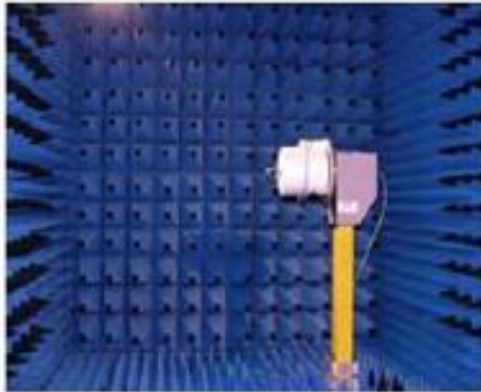
Dark room specifications: ETS-743

TD-SCDMA test equipment: [StarPoint SP6010](#)/Agilent 8960

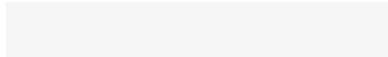
LTE-TDD/FDD-SCDMA test equipment: [StarPoint SP8011](#)/CMW500

WCDMA/GSM/CDMA test equipment: Agilent 8960

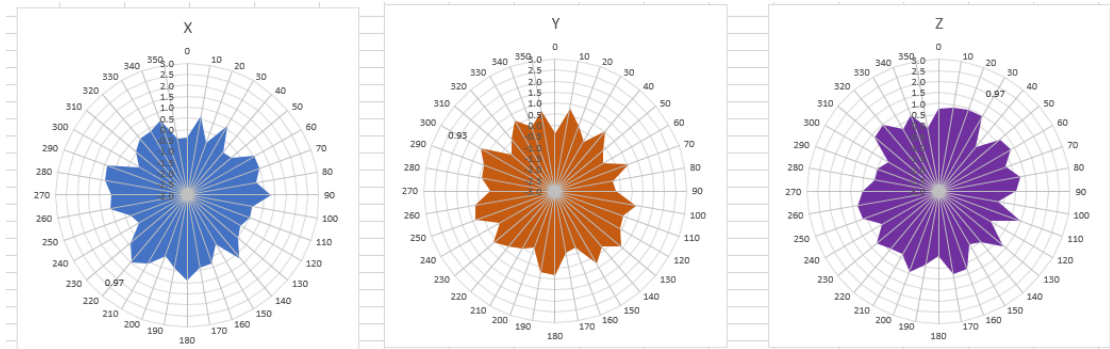
Passive efficiency testing equipment: Agilent Technologies E5071B



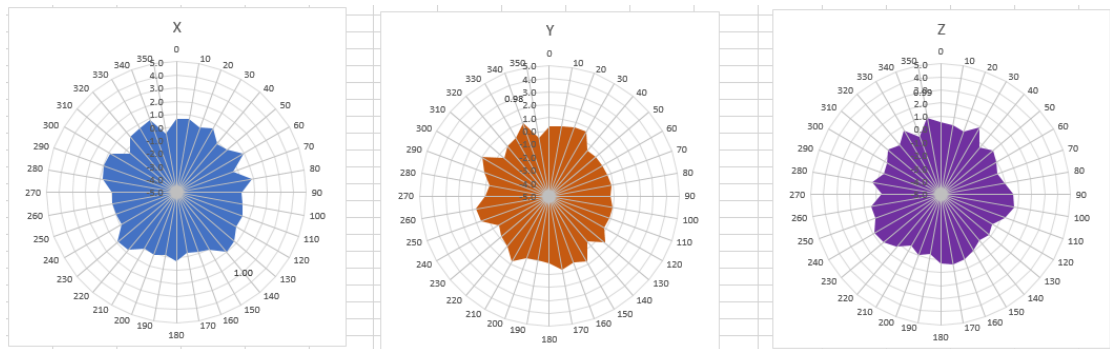
4 . Antenna Radiation Pattern



2400MHz



2450MHz



2500MHz

