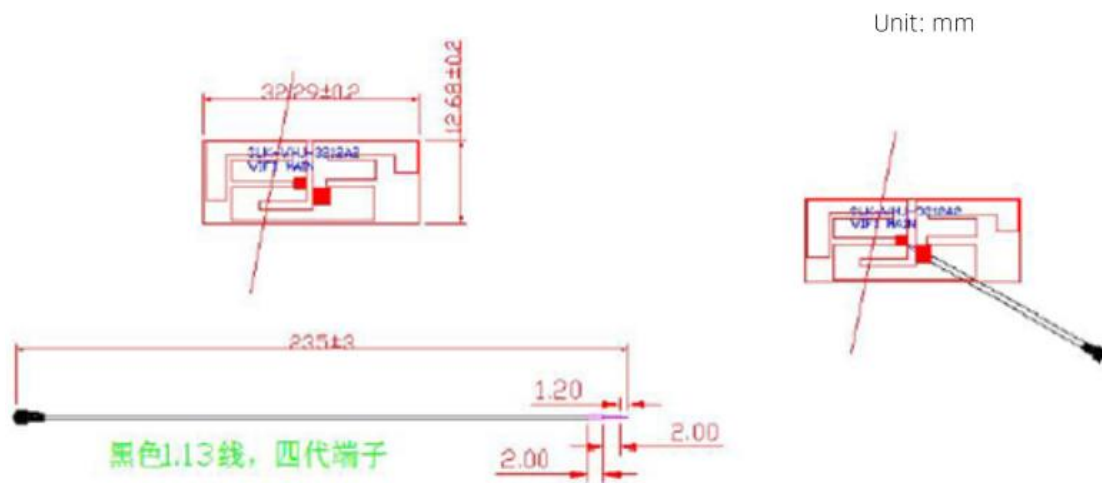


## 1. Antenna Description:

|                 |  |
|-----------------|--|
| Antenna type    | PIFA antenna                                     |
| Model           | SLK-WHJ-3212A2-R-235IV-B                         |
| Frequency range | 2400-2500MHz                                     |
| Manufacturer    | ShenZhen WeiHejia Electronics Technology CO.,LTD |
| ANT Peak Gain   | 1.00 dBi   |

## 2. Antenna Photo:



## 3. Test Equipment & Conditions

### 3.1 Test instrument

VSWR is tested using Agilent E5071B connected to a hand mechanism, and the status is free space.

## 3.2 Test environment and methods

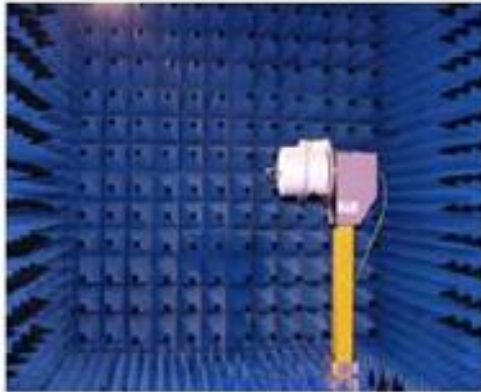
Dark room specifications: ETS-743

TD-SCDMA test equipment: [StarPoint SP6010](#)/Agilent 8960

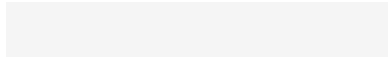
LTE-TDD/FDD-SCDMA test equipment: [StarPoint SP8011](#)/CMW500

WCDMA/GSM/CDMA test equipment: Agilent 8960

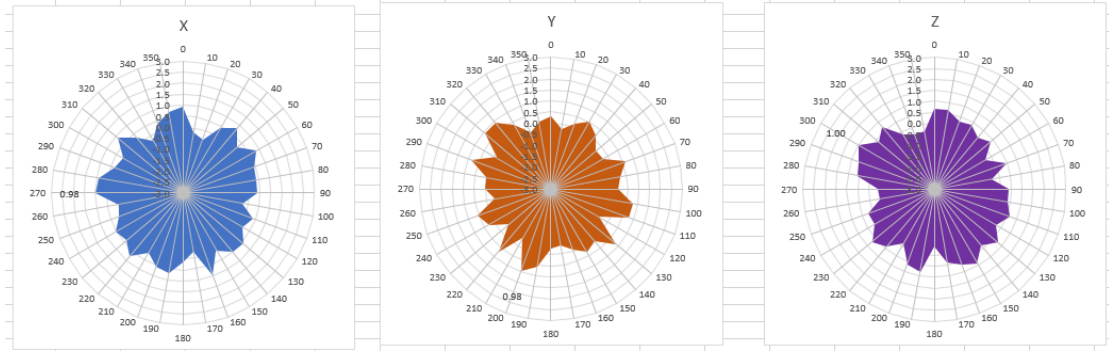
Passive efficiency testing equipment: Agilent Technologies E5071B



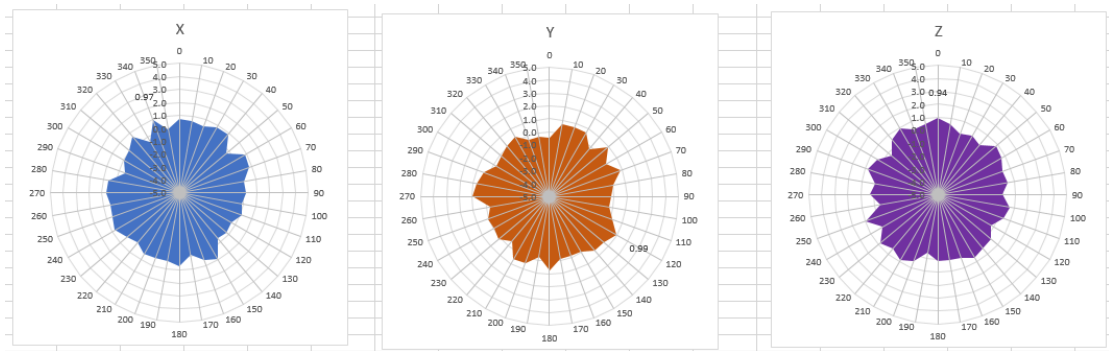
## 4 . Antenna Radiation Pattern



# 2400MHz



# 2450MHz



# 2500MHz

