

AJKJ

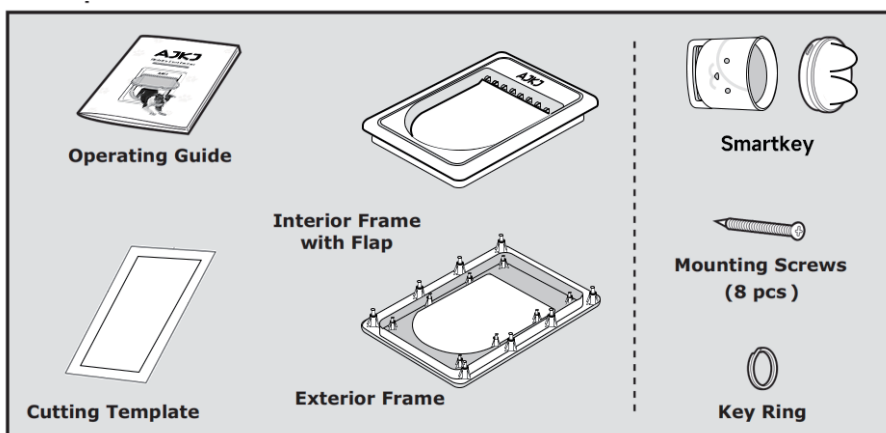
Electronic Smart Pet Door

Please read this entire guide before installing.



Components

- 1 × Operating Guide
- 1 × Interior Frame with Flap
- 1 × Smart Key
- 1 × Key Ring
- 1 × Cutting Template
- 1 × Exterior Frame
- 8 × Mounting Screws



Tools Needed

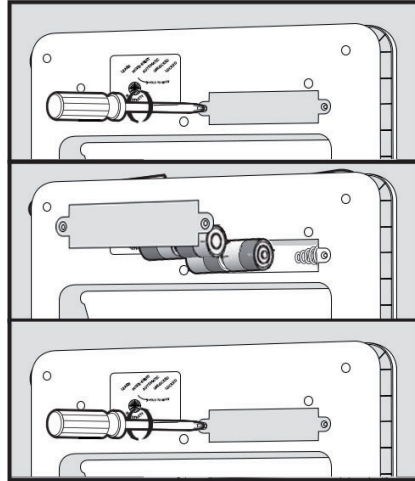
- Jigsaw or Keyhole Saw
- Screwdriver
- 2 CR2032 Batteries (required)
- Pencil
- Electric Drill
- 4 D-Cell (LR20) Batteries (required)
- Tape
- String

PREPARE / Preparing Your Smart Pet Door

DO NOT PROCEED WITH CUT-OUT OR INSTALLATION UNTIL ALL STEPS A-D BELOW HAVE BEEN COMPLETED.

A. Place batteries in the door.

1. With a screwdriver, remove the battery compartment cover screw.
2. Remove the battery compartment cover.
3. Refer to the inside of the battery compartment cover for proper orientation of the four D-Cell (LR20) batteries.
4. Replace the battery compartment cover and re-install the two screws.
5. When the batteries are placed in the Door the red light will illuminate for two seconds and the flap will move into the locked position, unless the flap is already in the locked position.



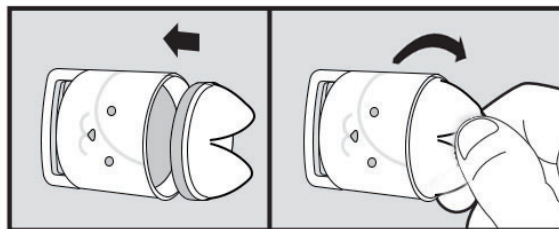
NOTE: The door must be in the upright position for the flap to center properly and operate correctly.

B. Place Battery in the Key.

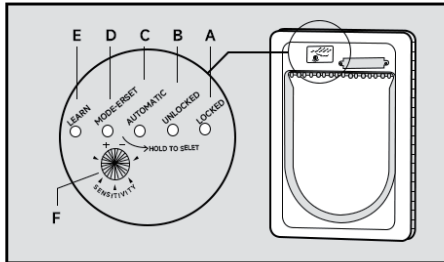
1. Place the battery into the bottom of the Key.
2. Grasp the ear at the bottom of the key, turn left to remove the bottom cover, put in the battery and turn it in the opposite direction to lock the bottom cover.

NOTE:

The Key has a red light that will flash when the battery is low, the battery should be replaced as soon as possible.



C. Check Operational Modes Before Installation Operational Indicators



- a. Locked or Low Battery Red Indicator
- b. Unlocked or Learn Mode Green Indicator
- c. Automatic or Error Mode Yellow Indicator
- d. Mode-Reset Selection Button
- e. Learn Mode Button
- f. Sensitivity Knob

- To check if operational settings are working properly, hold down the MODE-RESET button until each operational mode has cycled through once to allow red, green and yellow lights to illuminate one at a time.

Operational Modes

LOCKED MODE - Does not allow entry or exit for any pet. The door ships from the factory in LOCKED MODE and when batteries are placed in the door, it will enter LOCKED MODE. To set: hold the MODE-RESET button until the red light illuminates and release when selected.

UNLOCKED MODE - Allows entry and exit for all pets. To set: hold the MODE-RESET button until the green light illuminates and release when selected.

AUTOMATIC MODE - Allows entry and exit for a pet wearing a programmed key
To set: hold the MODE-RESET button until the yellow light illuminates and release when selected. Five keys can be programmed to one door for selective entry and exit during AUTOMATIC MODE.

NOTE: If at any time the red light remains illuminated, replace with a set of fresh batteries. If that does not reset the red light, please contact us from Amazon for additional help.

If any part of step C was unsuccessful, please contact us from Amazon for additional help.

D. Check Door Location Before Installation

Prior to installation, it is recommended to check that the Door will operate properly in the intended location or application to guard against possible severe radio-frequency interference.

Household appliances and common electronic products should be located at least two feet (60 cm) away from the Door's location. Radio-frequency interference detected from other household appliances or common electronic products will negatively affect the ability of the Door to receive a Key signal. Typical appliances and products to consider are laptop computers, wireless telephones, microwaves, televisions, garage door openers, hand-held electronic devices (such as cell phones, game stations and remote controls). It is recommended to install Door in a location where direct wind is not a factor.

Operating Temperature Range: -5° F to 180° F (-20.5° C to 82° C). Operating Humidity Range: 0 to 99.9%.

- To check if Door's radio-frequency technology will operate properly in desired location and application, place Door directly in front of and against the door or application in the upright position. After performing steps A-C, now set the Door in AUTOMATIC mode and hold the Key directly in front of the Door. The Door flap should unlock in about three seconds. Remember, the Key included in the kit is already programmed to the Door.

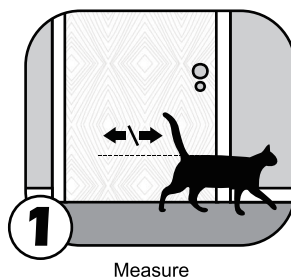
NOTE: If there are existing Keys in the household, remove all batteries while performing step D except the Key included with the Door.

If the Door does not unlock, move the Door to another location and follow steps A-D once more. If the Door's location test above was unsuccessful, please call our Customer Care Center for additional help. When steps A-D are completed and all are successful, your Door is ready for installation.

INSTALL / Installing Your Smart Pet Door

Step 1 Determine Pet Door Location

- 1a. Measure and mark your pet's shoulder height on the door.
- 1b. Determine location for the pet door. Draw a vertical center line through the shoulder height line using a level.

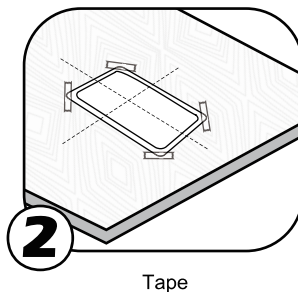


NOTICE:

If homeowner's door or other application is not level, the pet door must be marked level to swing properly.

Step 2 Preparing Door

- 2a. Remove door from hinges.
- 2b. Place on a raised level surface such as saw horses.
Helpful Tip: Clamp or weigh down the door to prevent it from moving.
NOTE: The pet door can be installed with the door hanging based on your skill level.
- 2c. Match the marked lines on the door with the shoulder and center lines on the template. Tape the template in place.

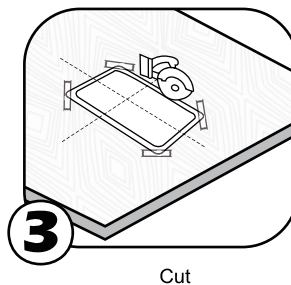


NOTICE:

When applying the template there should be a minimum of 4" (10.16 cm) between the bottom and sides of the door and the outer edge of the template to maintain the structure integrity of the door.

Step3 Cut Pet Door Opening

- 3a. Cut along the template lines. After cutting out the opening, remove excess template. You may need to recut to square the opening. This is necessary for the pet door frame to fit correctly.
Helpful Tip: Use a proper saw blade according to door material (for example a wood blade for wood door and metal blade for a metal door).
When cutting use both hands to hold the saw slow, steady and straight at a 90° angle. This will prevent the blade from cutting unevenly between interior and exterior areas of door.



NOTICE:

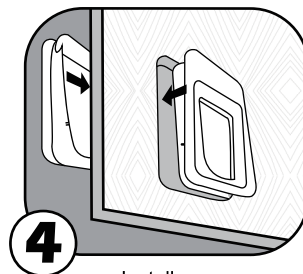
Make sure there is nothing underneath the door where you will be drilling the holes or cutting out opening.

Step4 Install Pet Door

Fit Check Before putting away the jigsaw, place the interior frame (frame with the flap) inside the cut out and check the fit. Then, place the exterior frame into the underside of the door to check the fit. If frames do not fit inside the opening, you may need to recut to square opening before proceeding with installation.

Re-hang door and place interior frame with flap inside cut-out of interior door. Place exterior frame on exterior of door and press firmly against interior frame and exterior frame with both hands.

Continue to press while moving hands from bottom to top of frames until alignment tabs connect and both frames are firmly in place.



Install

Helpful Tip:

Use painter's tape across Door's interior frame and door to keep in place while positioning the exterior frame.

Step5 Insert Screws

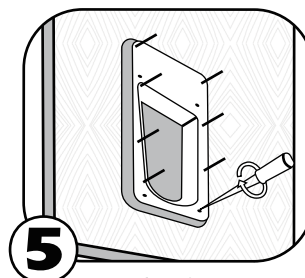
Thread mounting screws through interior frame and align with exterior frame. Tighten with screwdriver. **DO NOT OVERTIGHTEN.**

Helpful Tips:

If using an electric screwdriver, set on low torque.

NOTE:

Our Smart Pet Door has eight screw placement holes.



Attach

Step6 Train Your Pet

Tape the flap open to help your pet become familiar with the pet door opening. When your pet is more comfortable let the flap down and operate the Smart Pet Door in UNLOCKED Mode encouraging your pet to push through the flap. Once your pet is comfortable entering and exiting through the closed flap, set Smart Pet Door to AUTOMATIC Mode and operate with your pet's programmed Key. Walk your pet up.



Train

Helpful Tips:

Try treats to encourage your pet to push through the Smart Pet Door flap.

NOTE:

The Smart Pet Door is designed with an electric motor to release and unlock flap when a Key is detected. Do not allow your pet to run or charge through the Smart Pet Door. Due to variable radio-frequency interferences it could take several seconds for Key's unique code to read properly and Smart Pet Door's flap to unlock.

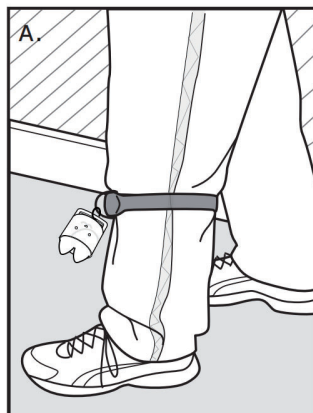
SET

A. Setting Smart Pet Door's Sensitivity Level

It is necessary to set your Smart Pet Door's sensitivity level so your pet's Key works properly due to location or application material, such as radio-frequency interferences, wood or metal door installations.

To begin, it is recommended to use the split ring (included) to attach the Key to the D-ring on your pet's collar. Also do not use metal tags as the additional metal can cause radio-frequency interference and hinder the detection of your pet's Key. Now, continue with the following "product in use" steps:

1. Put the dog's collar on your leg just below your knee. Tape may be used to secure the collar, if necessary. See A.
2. Stand directly in front of the Smart Pet Door so the Key is approximately 2.5 feet (76 cm) from the Smart Pet Door.
3. Put the Smart Pet Door in the UNLOCKED Mode.
4. Put the Smart Pet Door in the Sensitivity Test Mode by holding down the MODE-RESET and LEARN buttons at the same time until all three lights flash once.
5. Turn the Sensitivity Knob counter clockwise to the minimum position, then turn the Sensitivity Knob clockwise until all lights begin to flash again.
6. Slowly continue to adjust the Sensitivity Knob clockwise until you see a minimum of six consecutive flashes and stop adjusting. Do not adjust higher than necessary.
7. Put the Smart Pet Door in AUTOMATIC Mode and step away at least 10 feet (3 m), allowing the door to automatically lock. This may take up to fifteen seconds after the Key no longer is detected.
8. Now confirm the sensitivity level by approaching the Smart Pet Door again. The door should unlock when you step within approximately 2 feet (60 cm) in front of the Smart Pet Door.



C. Programming a New Key

To reduce error while programming, remove the battery from all programmed Keys except the one you are programming. Press and hold the LEARN button until the green light illuminates and begins to flash, now release the button. Bring the Key directly below the green light and the light will stop flashing and illuminate for two seconds. Now your new Key has been programmed and added to memory. Up to five different Keys can be added, one at a time.

D. Attach the Key to the Pet’s Collar

A split key ring has been provided to attach to your pet’s collar and should hang under the pet’s neck. The Smart Pet Door includes (one) Key which comes pre-programmed and ready to use.

OPERATE

Operating Your Smart Pet Door

LOCKED MODE – Does not allow entry or exit for any pet. The Smart Pet Door ships from the factory in LOCKED MODE and when batteries are placed in the Smart Pet Door, it will enter LOCKED MODE. To set: hold the MODE-RESET button until the red light illuminates and release when selected.

UNLOCKED MODE – Allows entry and exit for all pets. To set: hold the MODE-RESET button until the green light illuminates and release when selected.

AUTOMATIC MODE – Allows entry and exit for a pet wearing a programmed Key; up to five Keys can be programmed into one Smart Pet Door for selective entry and exit during automatic mode. To set: hold the MODE-RESET button until the yellow light illuminates and release when selected.

NOTE: If at any time the red light remains illuminated, replace with a set of fresh batteries. If that does not reset the red light, please contact us from the Amazon help center.

Illuminating Color	Condition	Pet Door Status
RED	Solid only for two seconds after selecting LOCKED Mode	LOCKED Mode
	Flashing	Low battery alert
	Constant solid	Internal failure has occurred
GREEN	Solid only for two seconds after selecting LOCKED Mode	UNLOCKED Mode
	Flashing	Learn Mode
YELLOW	Solid only for two seconds after selecting AUTOMATIC Mode	AUTOMATIC Mode
	Flashing	Error alert
RED GREEN AND YELLOW	Flashing at the same time	Sensitivity Test Mode

Troubleshooting

Smart Pet Door does not respond to the presence of the Key when my pet is directly in front of the Smart Pet Door within three seconds.	<ul style="list-style-type: none">• Check that the Smart Pet Door is in AUTOMATIC Mode.• Check that the Key has been programmed to the Smart Pet Door.• Check sensitivity level has been properly set, see page 10.• Check that the battery in the Key is screwed in tightly.• Check that the batteries in the Smart Pet Door are fresh.• If the condition persists, check that there are no radio-frequency transmitting devices or electronic devices that radiate electrical energy, which may interfere with the operation of the Smart Pet Door.
Yellow light is flashing	<ul style="list-style-type: none">• Obstruction to the flap has been detected.• Press the MODE-RESET button to cause the Smart Pet Door to attempt to lock the flap. Clear any obstructions that keep the flap from locking. When the flap successfully locks, normal operation is resumed.• If your large Smart Pet Door does not close properly, please contact us from the Amazon help center for further assistance.
Red light remains illuminated (internal failure has occurred)	<ul style="list-style-type: none">• Remove batteries and replace them with a fresh set of batteries. If that does not reset the red light, please contact us from Amazon help center for help.
Red light is flashing	<ul style="list-style-type: none">• Low battery indicator, replace batteries.
Red, green and yellow lights are flashing	<ul style="list-style-type: none">• Sensitivity set mode has been activated. It will automatically de-activate in thirty minutes, or can be immediately de-activated by pressing the MODE-RESET button once.

Revert Key to Default Factory Setting

The Smart Pet Door can be cleared of all additional programmed Key EXCEPT the one included from the factory. To do this, first take out batteries from battery compartment. Then, as you place batteries back into the battery compartment, hold down the LEARN button. When LEARN button is held and the last battery is in place, the red and green lights will illuminate three times. Now, all Keys programmed to the Smart Pet Door have been cleared except the one Key included with your Smart Pet Door.

Clear Key Memory

The Smart Pet Door can be cleared of all programmed Keys, even the one included from the factory. To do this, first remove batteries from battery compartment. Then, as you place batteries back into the battery compartment, hold down the MODE-RESET button. When MODE-RESET button is held and the last battery is in place, the red and yellow lights will illuminate three times. Now all Keys have been cleared.

FCC Warning:

This equipment has been tested and found to comply with the limits for a Class B digital device, pursuant to part 15 of the FCC Rules. These limits are designed to provide reasonable protection against harmful interference in a residential installation. This equipment generates, uses and can radiate radio frequency energy and, if not installed and used in accordance with the instructions, may cause harmful interference to radio communications. However, there is no guarantee that interference will not occur in a particular installation. If this equipment does cause harmful interference to radio or television reception, which can be determined by turning the equipment off and on, the user is encouraged to try to correct the interference by one or more of the following measures:

- Reorient or relocate the receiving antenna.
- Increase the separation between the equipment and receiver.
- Connect the equipment into an outlet on a circuit different from that to which the receiver is connected.
- Consult the dealer or an experienced radio/TV technician for help.

Caution: Any changes or modifications to this device not explicitly approved by manufacturer could void your authority to operate this equipment.

This device complies with part 15 of the FCC Rules. Operation is subject to the following two conditions:

(1) This device may not cause harmful interference, and (2) this device must accept any interference received, including interference that may cause undesired operation.

This equipment complies with FCC radiation exposure limits set forth for an uncontrolled environment. This equipment should be installed and operated with minimum distance 0cm between the radiator and your body.