

Qaekie

Qaekie Q20 V5.3 Wireless Active Noise Cancelling Headphones User Manual

After-Sales Service:
Email: support@qaekie.com
Website: www.qaekie.com

Product Images

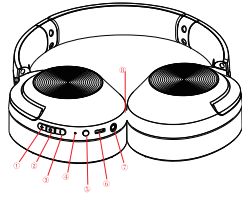


Thank you for purchasing our wireless active noise cancelling headphones, which use New generation ANC technology to reduce noise when listening music. Hope our ANC wireless headphones will bring you a pleasant music enjoyment.

Please kindly activate your warranty within 14 days via service email before using this headphones.

01

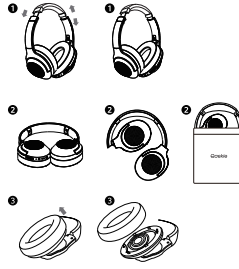
Product Overview



1	Volume Up/Next Song
2	Play/Pause
3	Volume Down/Previous Song
4	Led Indicator Light
5	Power On/Power Off/ANC/Mode Switch
6	Type-C Charging Port
7	3.5 AUX port
8	ENC MIC

02

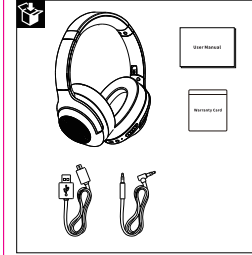
Product Overview



1	Stretchable
2	Foldable
3	Ear-Cup detachable

03

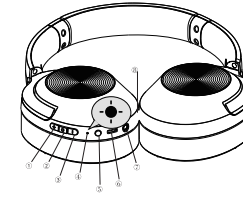
Package includes



1	Wireless ANC Headphones
1	User Manual
1	Type-C Charging Cable
1	3.5mm AUX Cable
1	Warranty Card

04

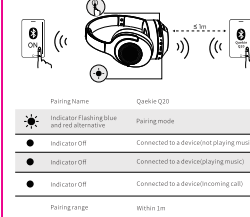
Power On/Off



Power On	Press and hold 5 for more than 3 seconds	Flashing Blue and Red (Status Indicator)
Power Off	Press and hold 5 for 3 seconds	Steady red for 3 seconds (Status Indicator)
ANC On	Press 5 one time	Steady Blue (ANC Led Indicator)
ANC Off	Press 5 one time	ANC Led Indicator off

05

Pairing



Pairing Name	Qaekie Q20
Indicator Flashing blue and red alternative	Pairing mode
Indicator Off	Connected to a device(not playing music)
Indicator Off	Connected to a device(playing music)
Indicator Off	Connected to a device(receiving call)
Pairing range	Within 1m

06

Qaekie

Qaekie Q20 V5.3 Wireless Active Noise Cancelling Headphones User Manual

After-Sales Service:
Email: support@qaekie.com
Website: www.qaekie.com

Controls

	Bluetooth mode
	Play/Pause: Press 2 one time
	Next Song: Press and Hold 3 for more than 1.5 seconds
	Previous Song: Press and Hold 4 for more than 1.5 seconds
	Volume Up: Press 1 one time
	Volume Down: Press 3 one time
	ANC(Active Noise Cancelling) Mode On: Press 5 one time
	ANC(Active Noise Cancelling) Mode Off: Press 5 one time again
	Game Mode: Quick press 3 twice
	Music Mode: Quick press 3 twice again
	Active Noise Cancelling mode: Block the noise from the surrounding environment while wearing Qaekie Q20.

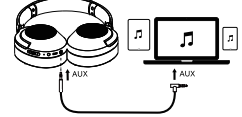
07

Controls

	Mobile phone
	Answer/End Call: Press 2 one time
	Placement call on hold and answer incoming call: Press and hold 3 for 1.5 seconds
	Reject Call: Press and hold 3 for 1.5 seconds
	Switch between held call and active call: Press and hold 3 for 3 seconds
	Activate Siri: Press and hold 2 for 1.5 seconds
	Deactivate Siri: Press and hold 2 for 1.5 seconds again
	Last Number Redial: Quick press 3 twice
	Re-set your headphones: Press 3 and 4 for 3 seconds simultaneously when headphone turn on. After re-set your headphones, headphone will shut off automatically after indicator light flashing blue and red for 3 seconds.

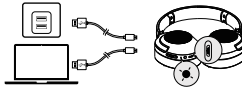
08

AUX Mode



Plugging in an audio cable will automatically switch to AUX mode, and Bluetooth mode and ANC mode will turn off automatically.

Charging your headphones



	Low battery: Notification sound. You will hear a voice prompt
	Flashing red every 3 seconds(Bluetooth Led Indicator)
	Charging: Steady red(Status Indicator) Note: Do not switch on Qaekie Q20 while charging
	Fully Charged: Indicator Off (Status Indicator)

09

Connect to two Mobile Phones



Connect to two Bluetooth device simultaneously

- Pair the headphone to the first mobile phone.
- After a successful pairing, turn off the headphone, and also turn off the Bluetooth function of the first mobile phone.
- Pair the headphone to the second mobile phone.
- After a successful pairing with second mobile phone, turn on the Bluetooth function of the first mobile phone. Select the paired model no. "Qaekie Q20" and manually click to connect.
- Two phone will both successfully be connected to the headphone at the same time.

10

Specification

Specifications:
Wireless Version: V5.3 + EDR
Supported Profiles: HSP, HFP, A2DP, AVRCP
Frequency Response: 2-2.45kHz
Transmission Range: 10M (obstacle free)
Talk Time: 60-80hrs (depend on phone volume)
Music Time: 50-60 hrs (depend on music volume and music frequency)
Charging Time: 2-2.5hrs
Standby Time: 300hrs
Rated input: 5V/0.5A
Charging Voltage: DC 5V
Speaker diameter: 40mm
Speaker sensitivity: 115dB+/3db
Speaker impedance: 32Ω+/3db
ANC depth: -32db+/3db
Charging Port: Type-C Port
Net body weight: 275g
Phone Call: Supported
Multi-point Function: Supported

11

Indicator

Headphone Indicator Status	
Headphone not paired	Indicator light flash red and blue alternately
Headphone ready to pair	Indicator light flash red and blue alternately
Successful pairing with mobile phone	Indicator light will be off
Power on	Indicator light flash red and blue alternative
Power off	Indicator light flash red for 2 seconds
Music play/pause	Indicator light will be off
Charging	Indicator light will be solid red
Charging completed	Indicator light will be off

12

Voice Prompt

Power on	Press and hold 5 for 3 seconds
Pairing	Press and hold 5 for 3 seconds
Bluetooth Connected	When connected with mobile phone successfully
Bluetooth Disconnected	When disconnect from the mobile phone
0,1,2,3,4,5,6,7,8,9	When an incoming call
Volume Maximum	Volume up to the max level
Volume Minimum(no sound)	Volume down to the min level
Low Battery	When battery is run out, the headphone will read
Power Off	Press and hold 5 for 3 seconds

13

Warranty

Permanent replacement of damaged, defective, upgraded or missing items (no need to return the original).

Please activate the warranty via email below within 14 days.

Warranty policy:
30 day money-back guarantee for any reason
For 30 days after the date of purchase, you could return your undamaged headphone and receive a full refund for ANY reason.

12-month warranty for quality-related issues
For 12 months after the date of purchase, we take care of all quality-related issues with a REPLACEMENT.

After-Sales Service:
Email: support@qaekie.com
Website: www.qaekie.com

14

This device complies with Part 15 of the FCC Rules. Operation is subject to the following two conditions: (1) this device may not cause harmful interference, and (2) this device must accept any interference received, including interference that may cause undesired operation.

Changes or modifications to this unit not expressly approved by the party responsible for compliance could void the user's authority to operate the equipment.

NOTE: This equipment has been tested and found to comply with the limits for a Class B digital device, pursuant to Part 15 of the FCC Rules. These limits are designed to provide reasonable protection against harmful interference in a residential installation. This equipment generates uses and can radiate radio frequency energy and, if not installed and used in accordance with the instructions, may cause harmful interference to radio communications. However, there is no guarantee that interference will not occur in a particular installation. If this equipment does cause harmful interference to radio or television reception, which can be determined by turning the equipment off and on, the user is encouraged to try to correct the interference by one or more of the following measures:

- Reorient or relocate the receiving antenna.
- Increase the separation between the equipment and receiver.
- Connect the equipment into an outlet on a circuit different from that to which the receiver is connected.
- Consult the dealer or an experienced radio/TV technician for help.

This device and its antenna(s) must not be co-located or operation in conjunction with any other antenna or transmitter.

Radiation Exposure Statement
The device has been evaluated to meet general RF exposure requirement in portable exposure condition without restriction.